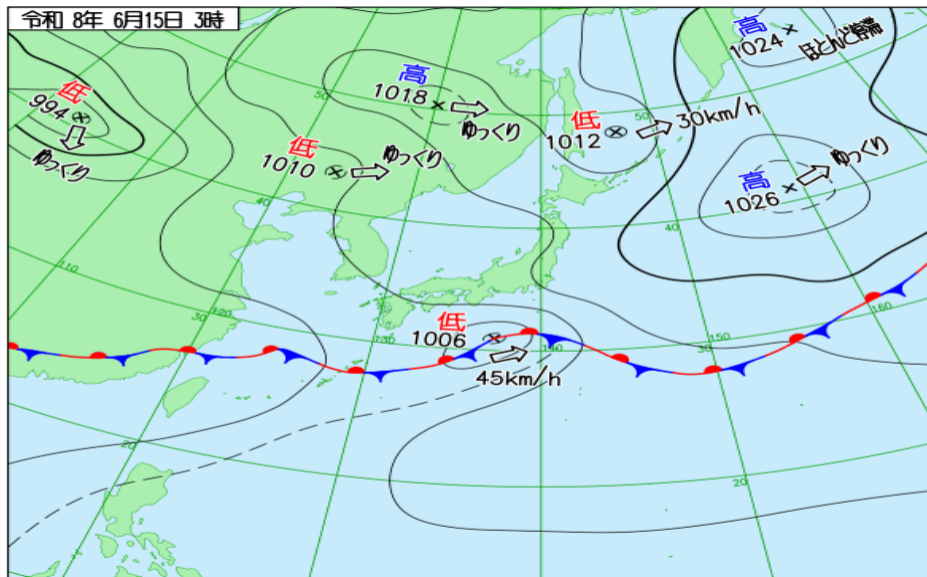
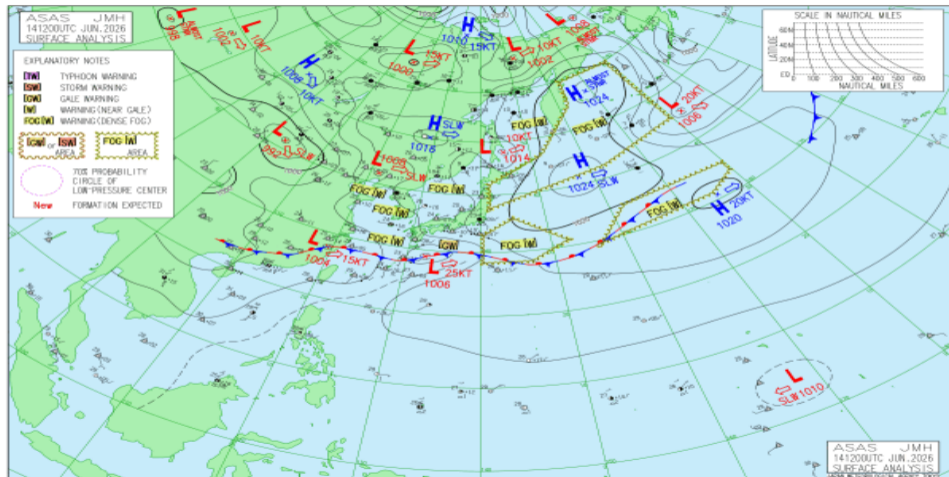


JMA 日本域実況天気図 06/14 18Z

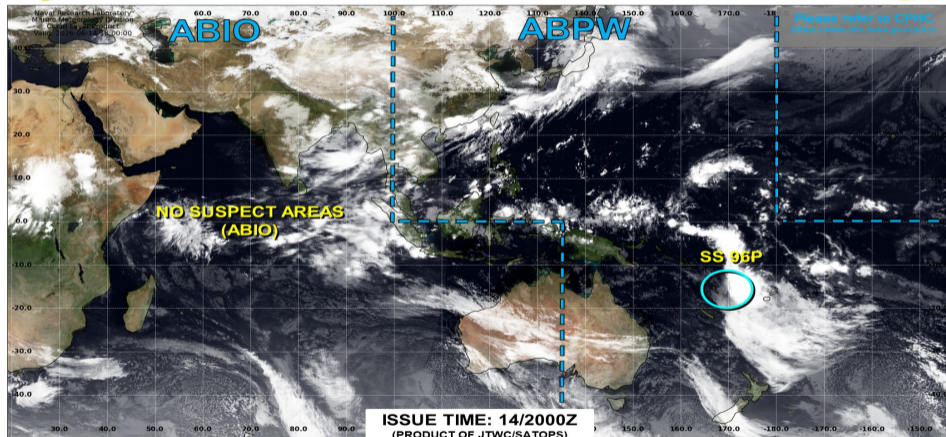


JMA アジア太平洋域実況天気図 06/14 12Z





JOINT TYPHOON WARNING CENTER



TC development unlikely within 24 hours



TC development likely, but expected to occur beyond 24 hours



TC development likely within 24 hours (Reference TCFA)

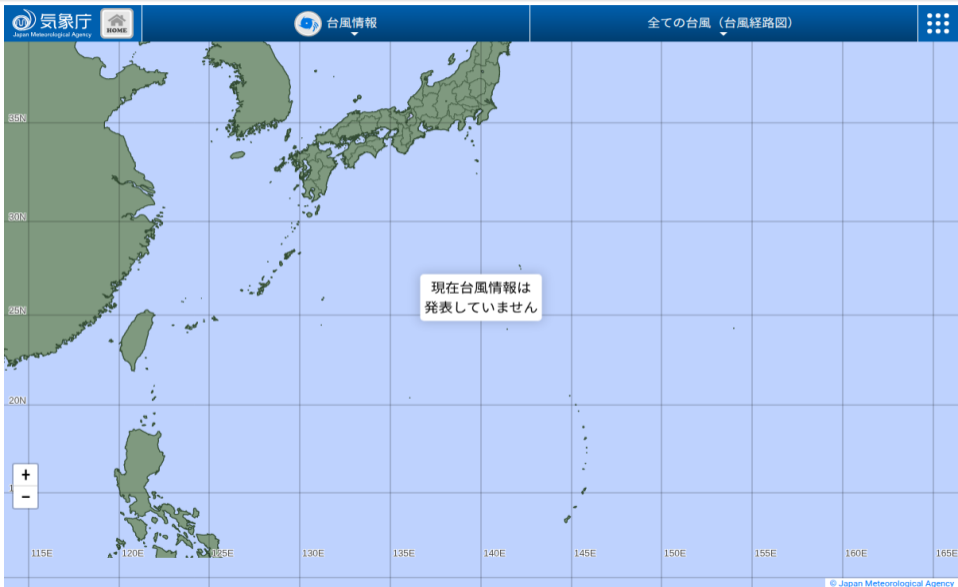


Monitoring for potential transition to TC. Invest label color denotes tropical transition probability

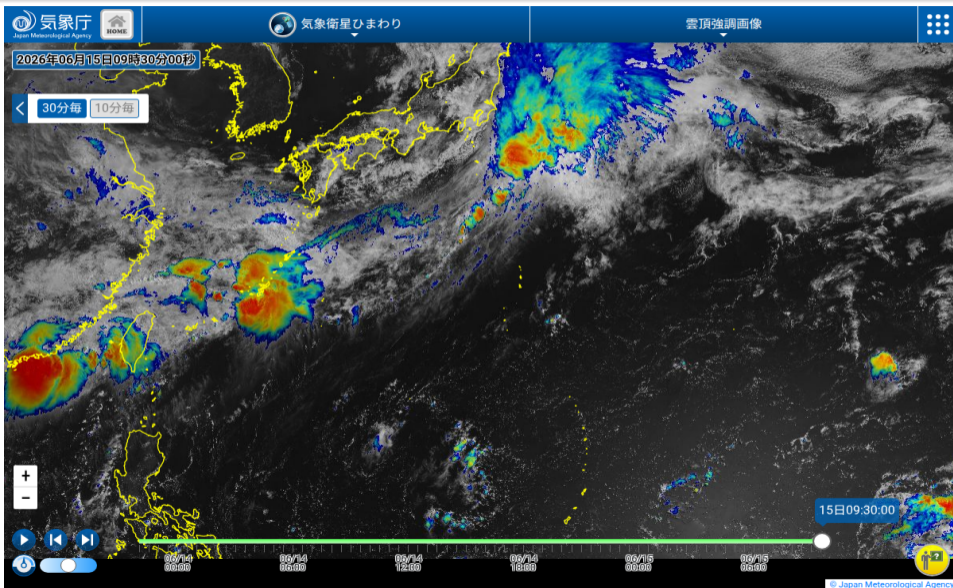


Tropical Cyclone (Reference Warning)

JMA 台風実況

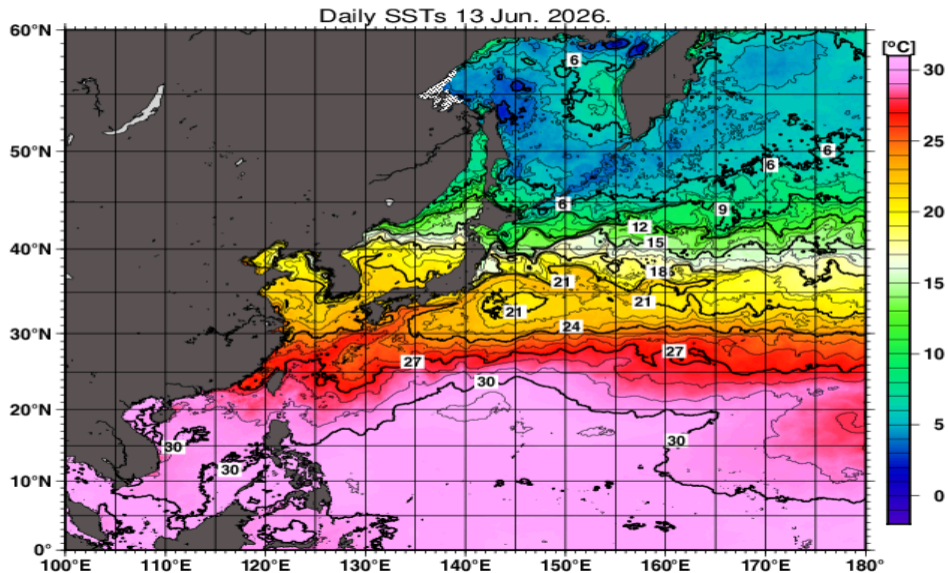


ひまわり雲頂強調

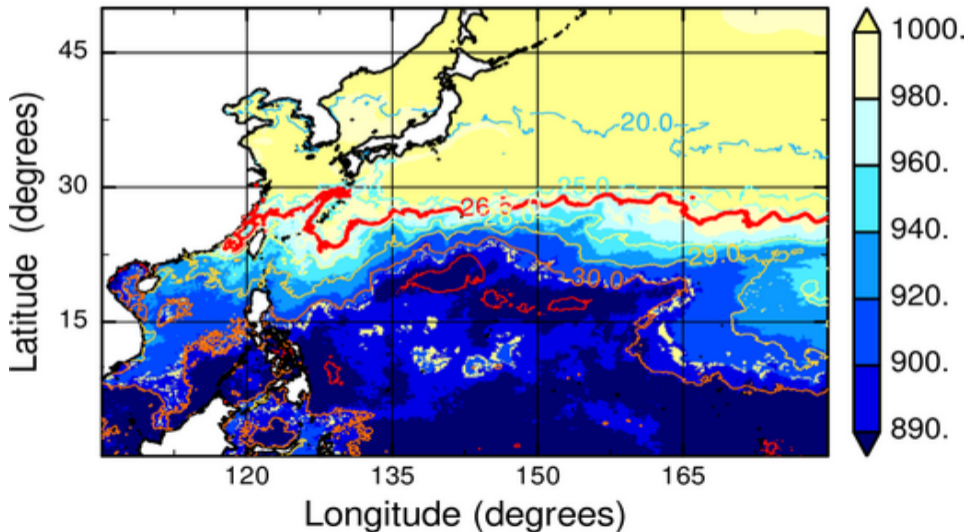


No Figure

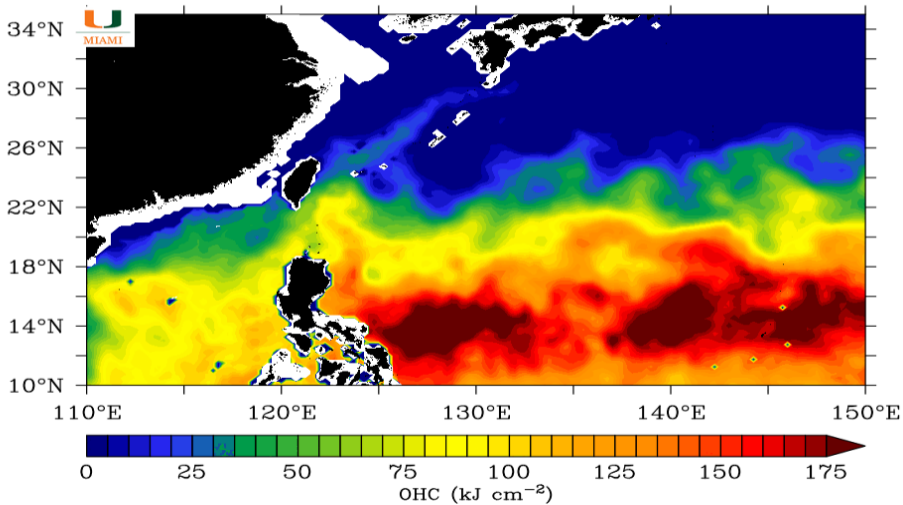
JMA 海面水温解析



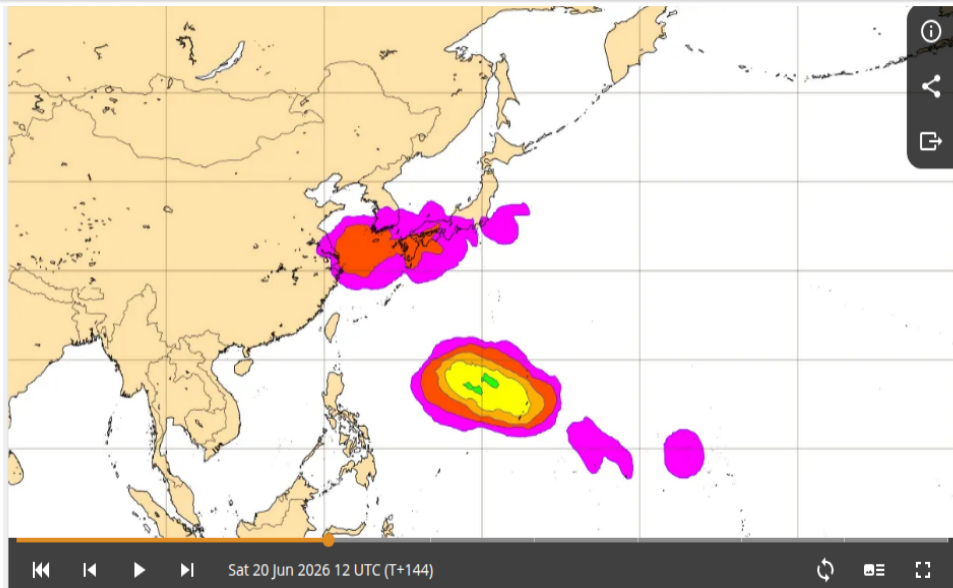
MPI_{BE}, JMAGSM+HIMSST (mb) (00:00:00Z13Jun2026)



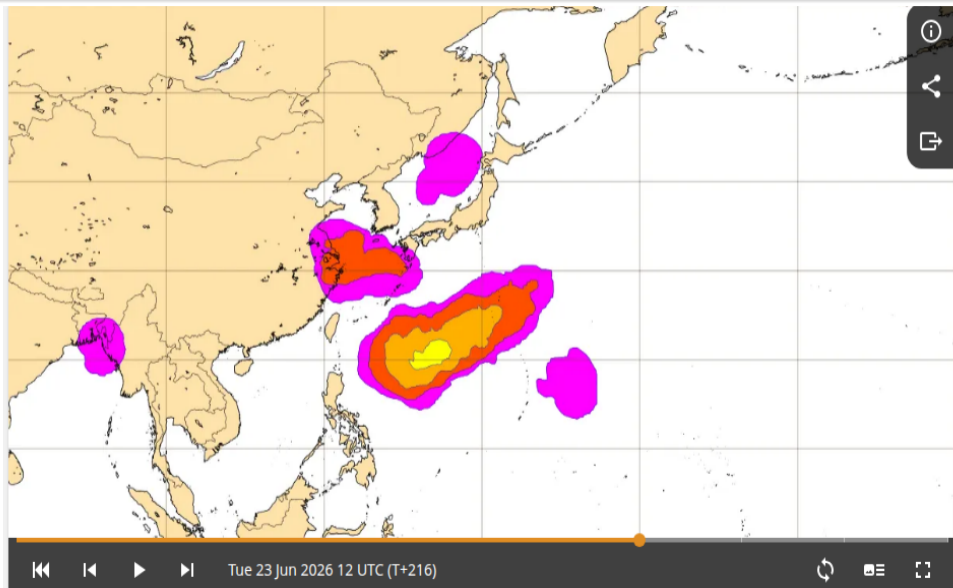
Ocean Heat Content: 06/14/2026



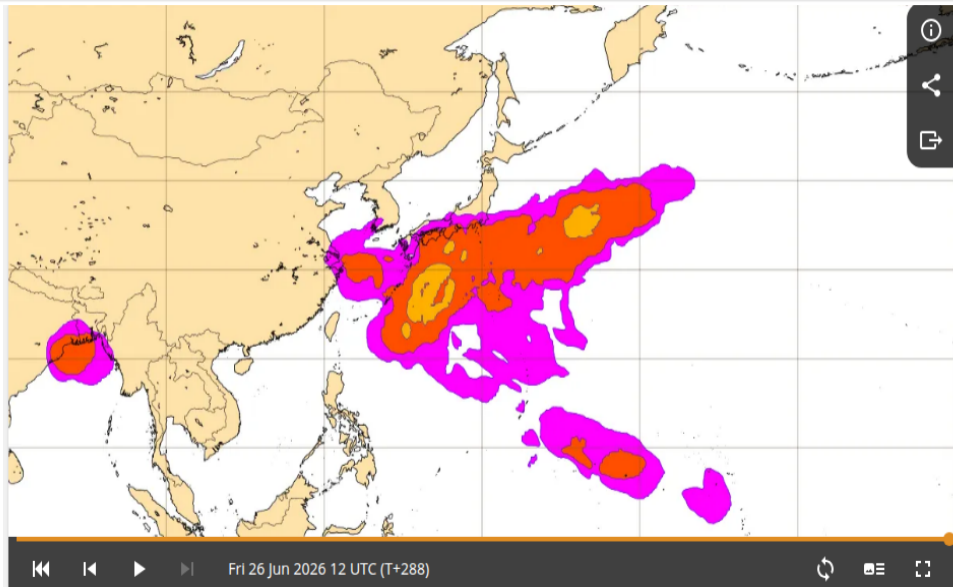
ECMWF TC genesis 06/20 12Z (6 日先) 予報



ECMWF TC genesis 06/23 12Z (9 日先) 予報



ECMWF TC genesis 06/26 12Z (12 日先) 予報

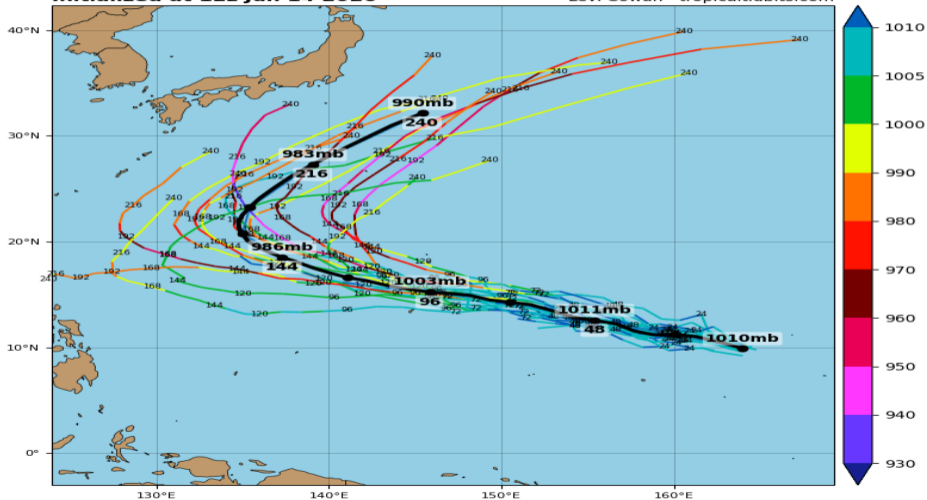


92W GEFS (06/14 12Z 初期値)

92W INVEST - GEFS Tracks and Min. MSLP (hPa)

Initialized at 12z Jun 14 2026

Levi Cowan - tropicaltidbits.com

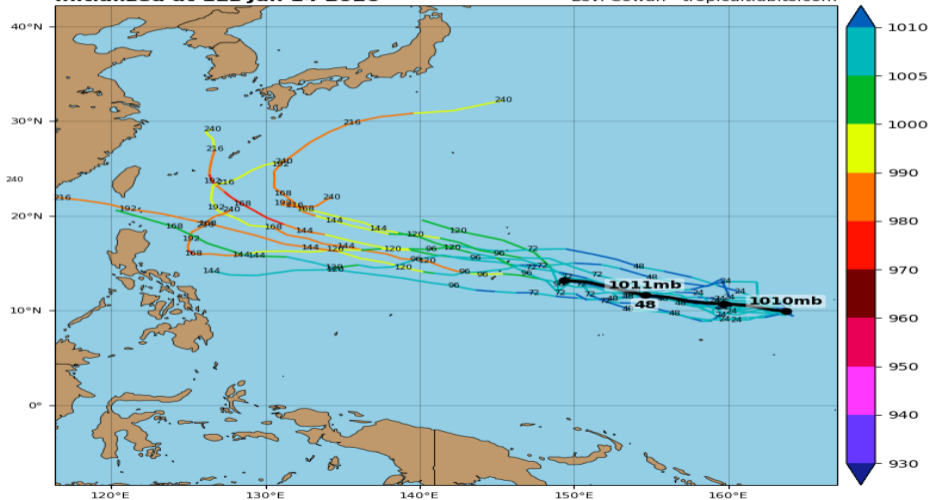


92W GEPS (06/14 12Z 初期値)

92W INVEST - GEPS Tracks and Min. MSLP (hPa)

Initialized at 12z Jun 14 2026

Levi Cowan - tropicaltidbits.com

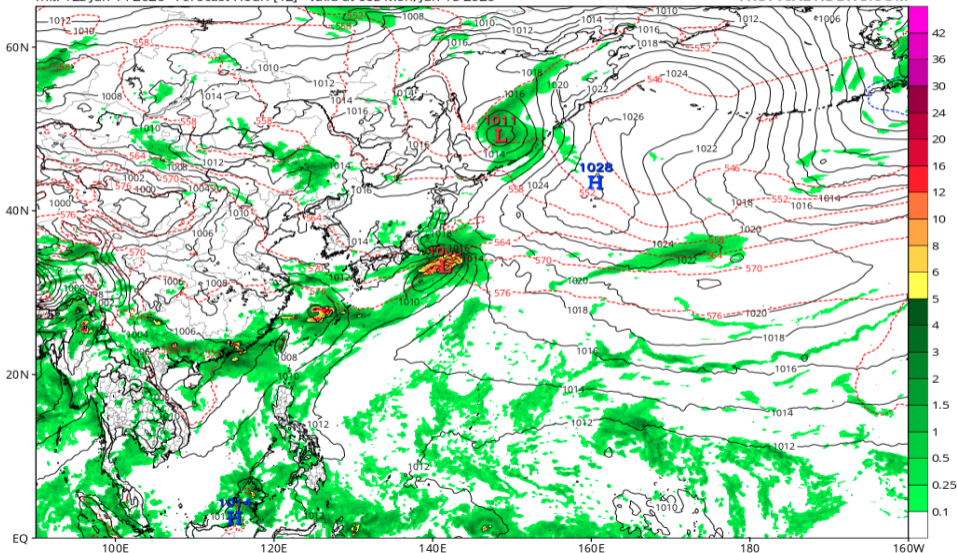


地上気圧配置 (GFS 06/15 00Z 予報)

GFS 6-hour Averaged Precip Rate (mm/hr), MSLP (hPa) & 1000-500mb Thickness (dam)

Init: 12z Jun 14 2026 Forecast Hour: [12] valid at 00z Mon, Jun 15 2026

TROPICALTIDBITS.COM

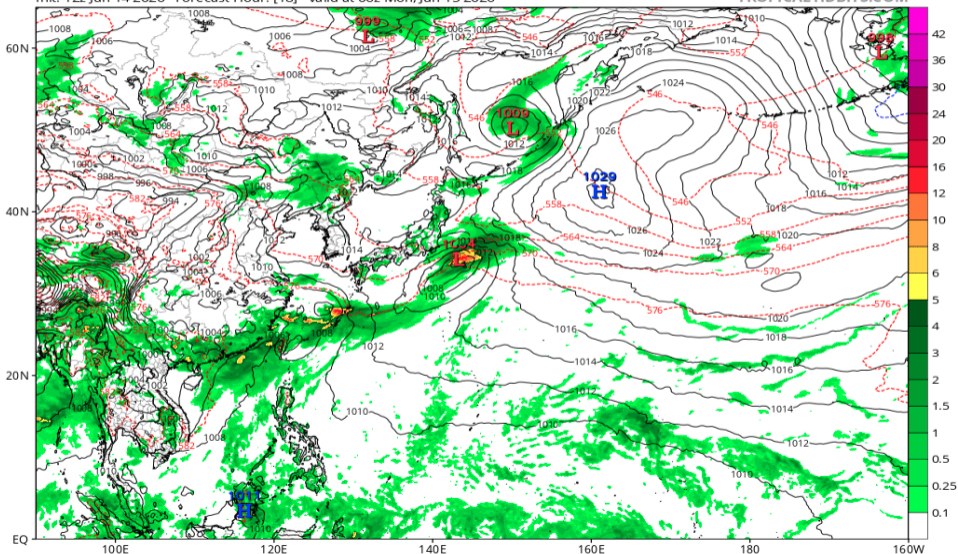


地上気圧配置 (GFS 06/15 06Z 予報)

GFS 6-hour Averaged Precip Rate (mm/hr), MSLP (hPa) & 1000-500mb Thickness (dam)

Init: 12z Jun 14 2026 Forecast Hour: [18] valid at 06z Mon, Jun 15 2026

TROPICALTIDBITS.COM

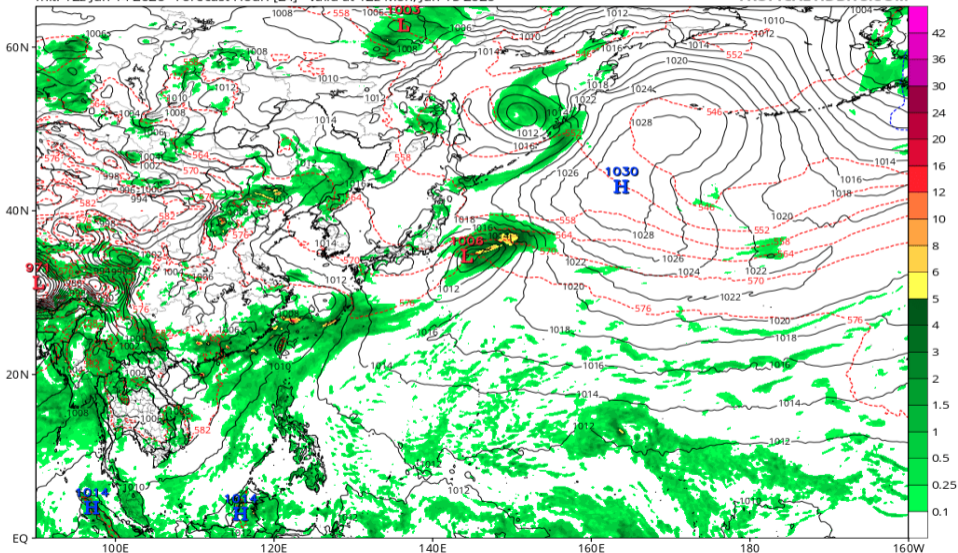


地上気圧配置 (GFS 06/15 12Z 予報)

GFS 6-hour Averaged Precip Rate (mm/hr), MSLP (hPa) & 1000-500mb Thickness (dam)

Init: 12z Jun 14 2026 Forecast Hour: [24] valid at 12z Mon, Jun 15 2026

TROPICALTIDBITS.COM

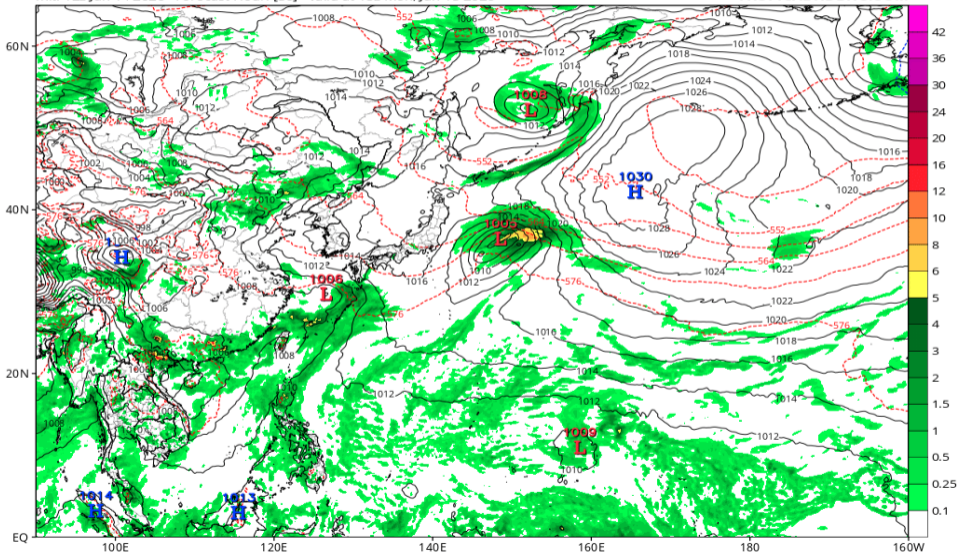


地上気圧配置 (GFS 06/15 18Z 予報)

GFS 6-hour Averaged Precip Rate (mm/hr), MSLP (hPa) & 1000-500mb Thickness (dam)

Init: 12z Jun 14 2026 Forecast Hour: [30] valid at 18z Mon, Jun 15 2026

TROPICALTIDBITS.COM

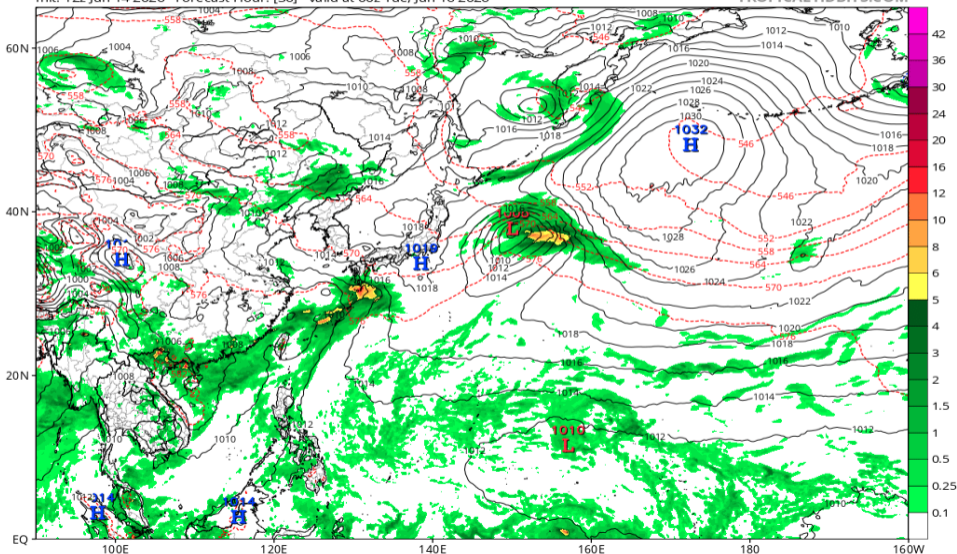


地上気圧配置 (GFS 06/16 00Z 予報)

GFS 6-hour Averaged Precip Rate (mm/hr), MSLP (hPa) & 1000-500mb Thickness (dam)

Init: 12z Jun 14 2026 Forecast Hour: [36] valid at 00z Tue, Jun 16 2026

TROPICALTIDBITS.COM

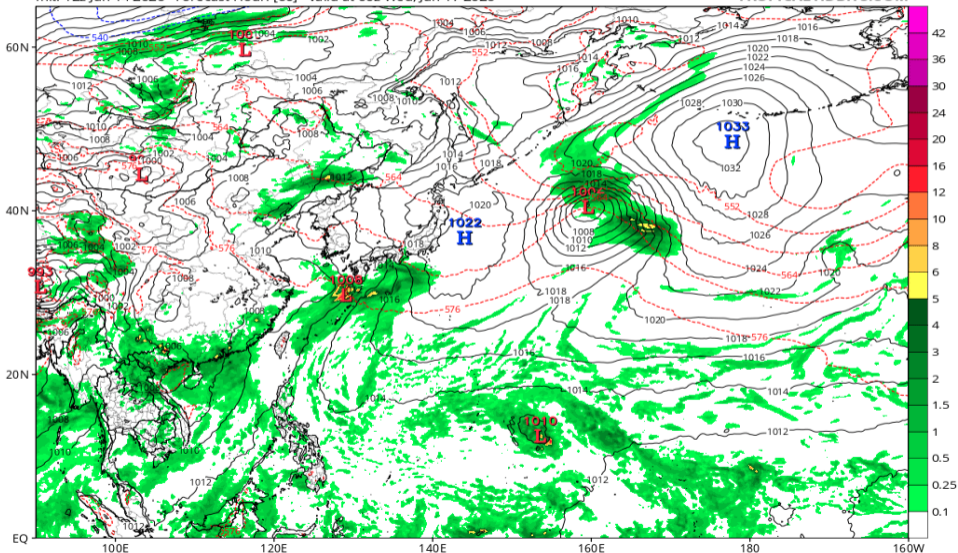


地上気圧配置 (GFS 06/17 00Z 予報)

GFS 6-hour Averaged Precip Rate (mm/hr), MSLP (hPa) & 1000-500mb Thickness (dam)

Init: 12z Jun 14 2026 Forecast Hour: [60] valid at 00z Wed, Jun 17 2026

TROPICALTIDBITS.COM

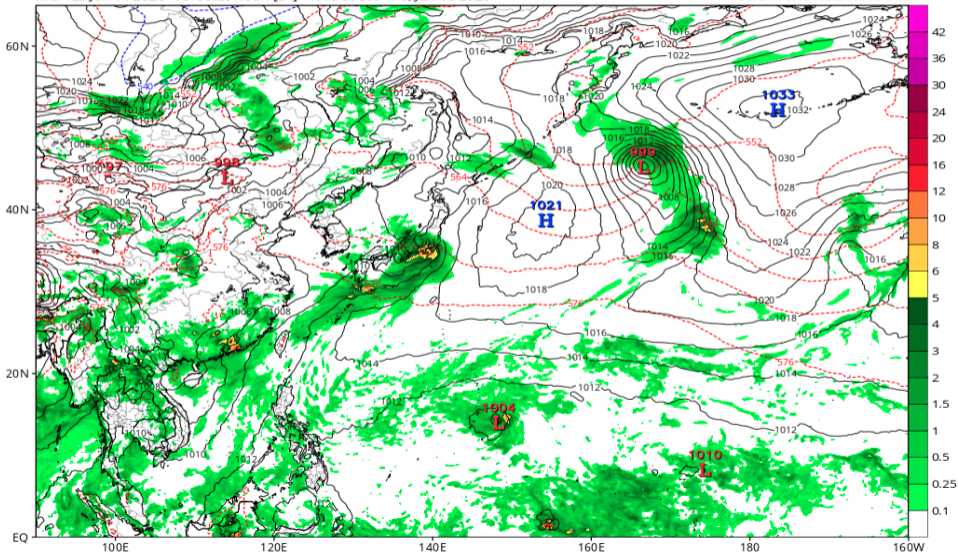


地上気圧配置 (GFS 06/18 00Z 予報)

GFS 6-hour Averaged Precip Rate (mm/hr), MSLP (hPa) & 1000-500mb Thickness (dam)

Init: 12z Jun 14 2026 Forecast Hour: [84] valid at 00z Thu, Jun 18 2026

TROPICALTIDBITS.COM

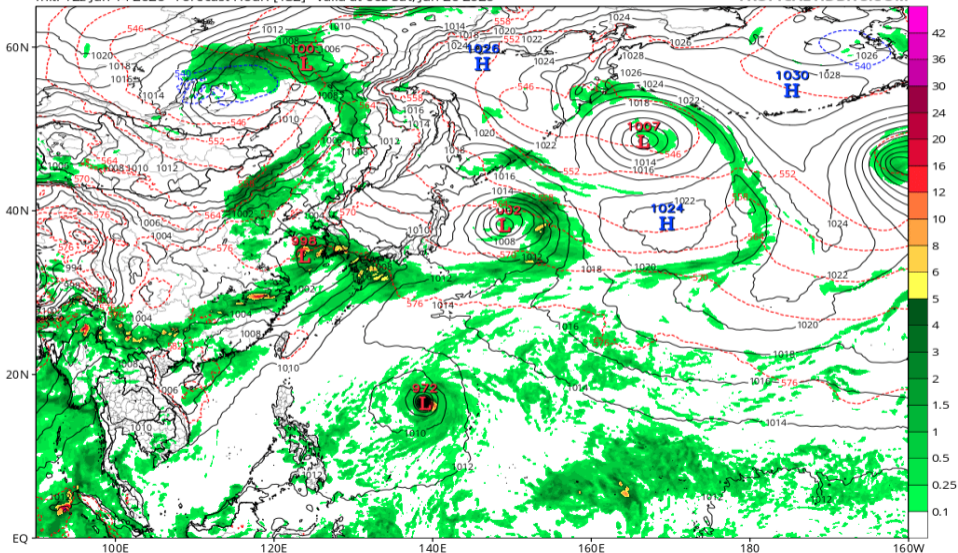


地上気圧配置 (GFS 06/20 00Z 予報)

GFS 6-hour Averaged Precip Rate (mm/hr), MSLP (hPa) & 1000-500mb Thickness (dam)

Init: 12z Jun 14 2026 Forecast Hour: [132] valid at 00z Sat, Jun 20 2026

TROPICALTIDBITS.COM

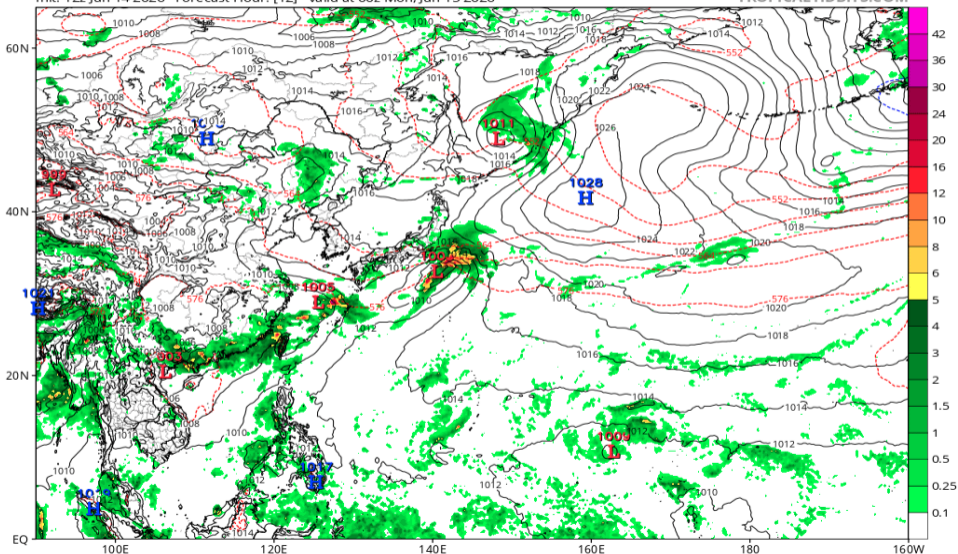


地上気圧配置 (ECMWF 06/15 00Z 予報)

ECMWF Instantaneous Precip Rate (mm/hr), MSLP (hPa) & 1000-500mb Thickness (dam)

Init: 12z Jun 14 2026 Forecast Hour: [12] valid at 00z Mon, Jun 15 2026

TROPICALTIDBITS.COM

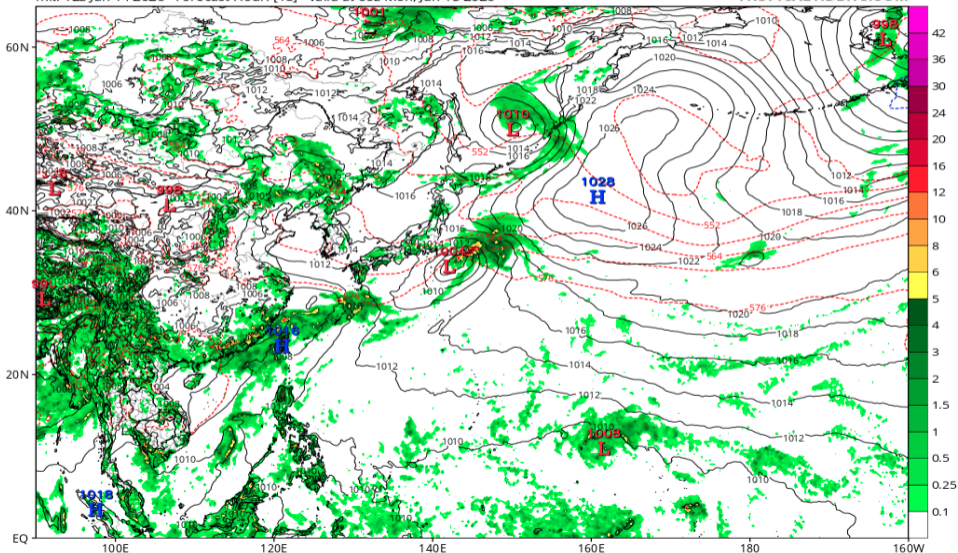


地上気圧配置 (ECMWF 06/15 06Z 予報)

ECMWF Instantaneous Precip Rate (mm/hr), MSLP (hPa) & 1000-500mb Thickness (dam)

Init: 12z Jun 14 2026 Forecast Hour: [18] valid at 06z Mon, Jun 15 2026

TROPICALTIDBITS.COM

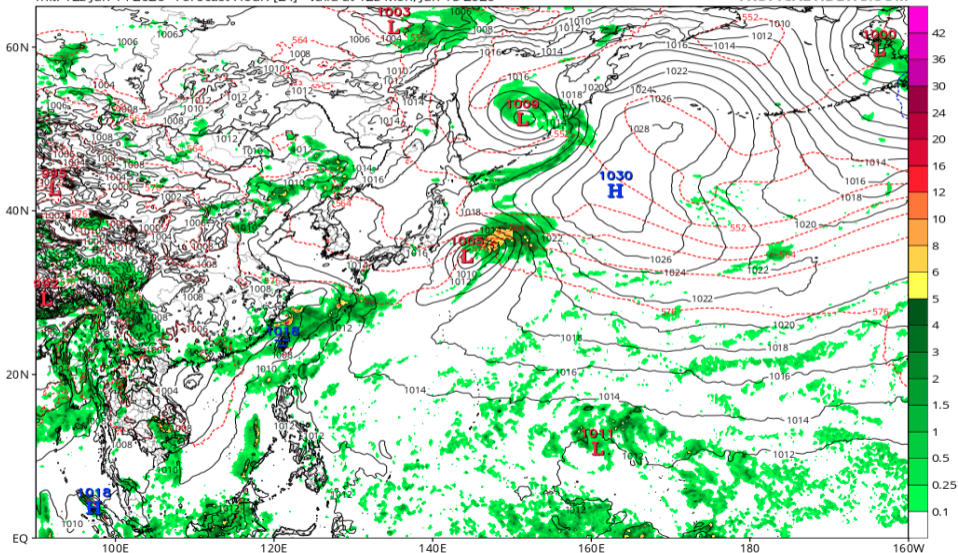


地上気圧配置 (ECMWF 06/15 12Z 予報)

ECMWF Instantaneous Precip Rate (mm/hr), MSLP (hPa) & 1000-500mb Thickness (dam)

Init: 12z Jun 14 2026 Forecast Hour: [24] valid at 12z Mon, Jun 15 2026

TROPICALTIDBITS.COM

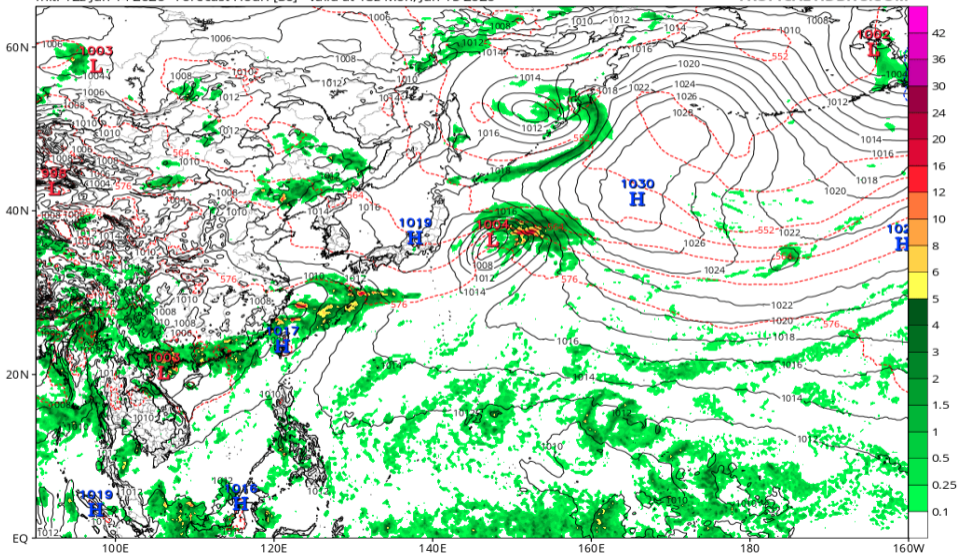


地上気圧配置 (ECMWF 06/15 18Z 予報)

ECMWF Instantaneous Precip Rate (mm/hr), MSLP (hPa) & 1000-500mb Thickness (dam)

Init: 12z Jun 14 2026 Forecast Hour: [30] valid at 18z Mon, Jun 15 2026

TROPICALTIDBITS.COM

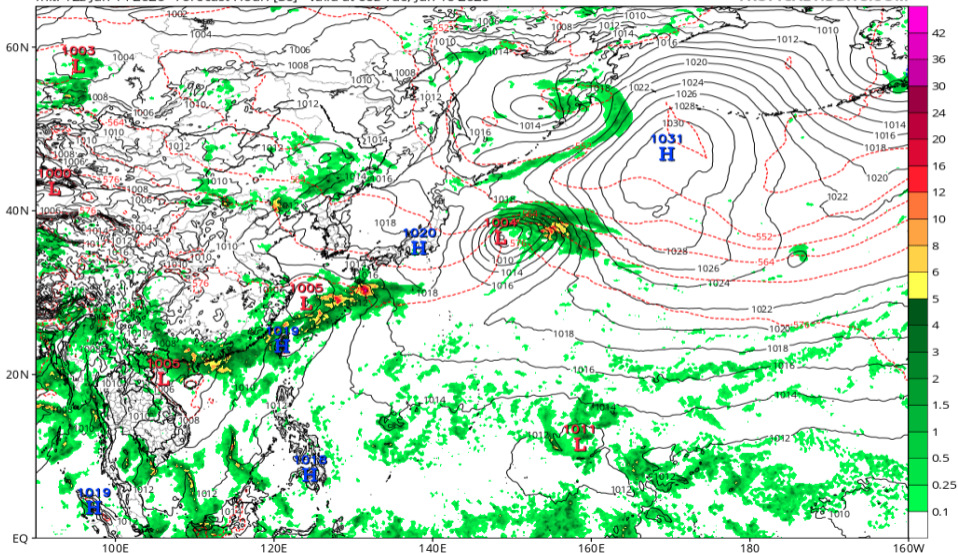


地上気圧配置 (ECMWF 06/16 00Z 予報)

ECMWF Instantaneous Precip Rate (mm/hr), MSLP (hPa) & 1000-500mb Thickness (dam)

Init: 12z Jun 14 2026 Forecast Hour: [36] valid at 00z Tue, Jun 16 2026

TROPICALTIDBITS.COM

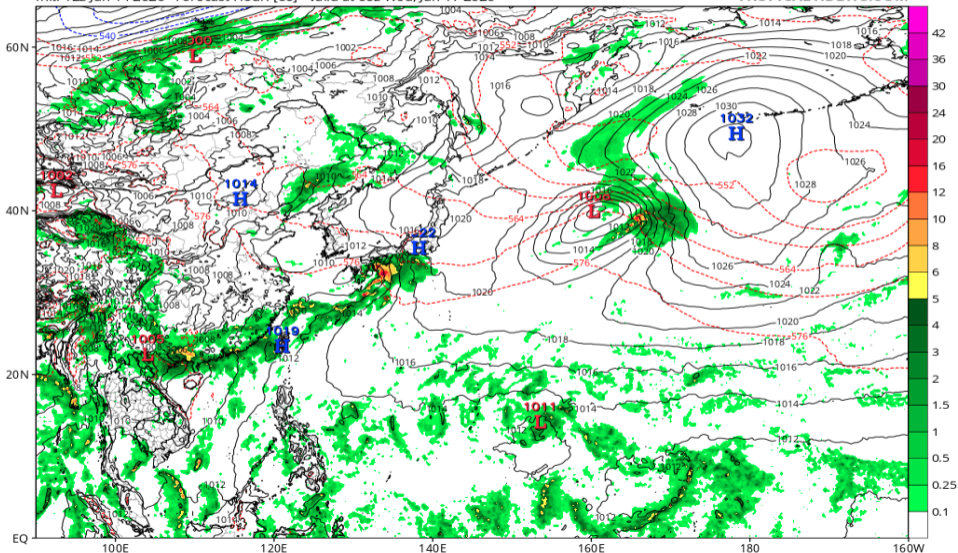


地上気圧配置 (ECMWF 06/17 00Z 予報)

ECMWF Instantaneous Precip Rate (mm/hr), MSLP (hPa) & 1000-500mb Thickness (dam)

Init: 12z Jun 14 2026 Forecast Hour: [60] valid at 00z Wed, Jun 17 2026

TROPICALTIDBITS.COM

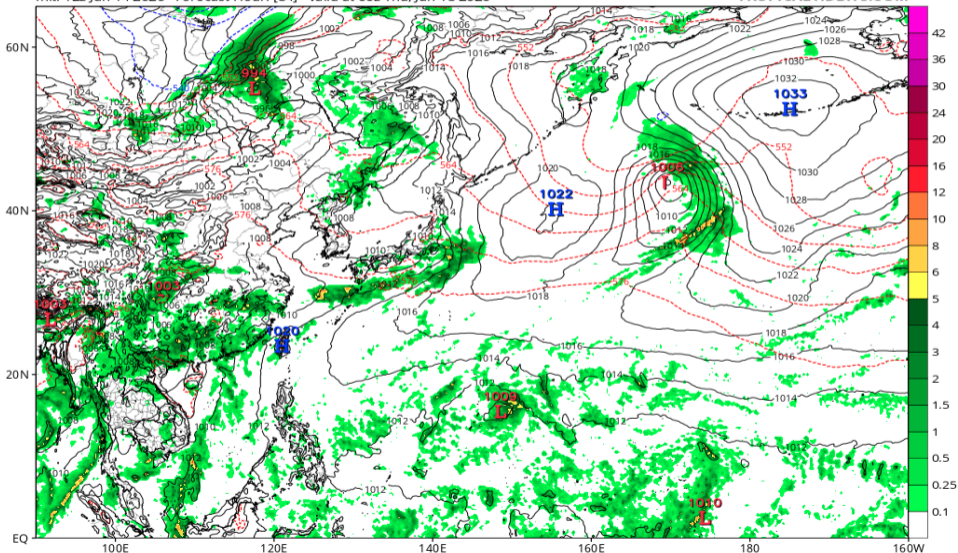


地上気圧配置 (ECMWF 06/18 00Z 予報)

ECMWF Instantaneous Precip Rate (mm/hr), MSLP (hPa) & 1000-500mb Thickness (dam)

Init: 12z Jun 14 2026 Forecast Hour: [84] valid at 00z Thu, Jun 18 2026

TROPICALTIDBITS.COM

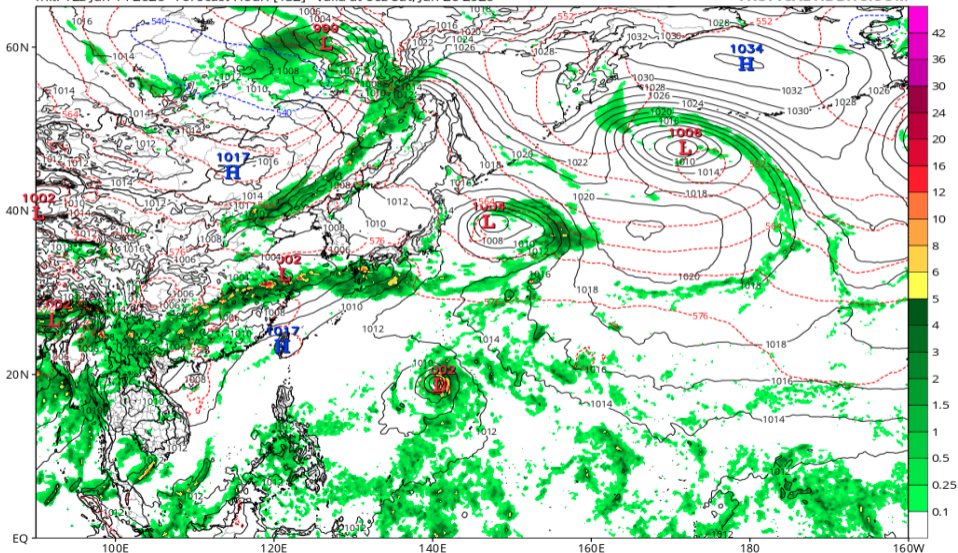


地上気圧配置 (ECMWF 06/20 00Z 予報)

ECMWF Instantaneous Precip Rate (mm/hr), MSLP (hPa) & 1000-500mb Thickness (dam)

Init: 12z Jun 14 2026 Forecast Hour: [132] valid at 00z Sat, Jun 20 2026

TROPICALTIDBITS.COM

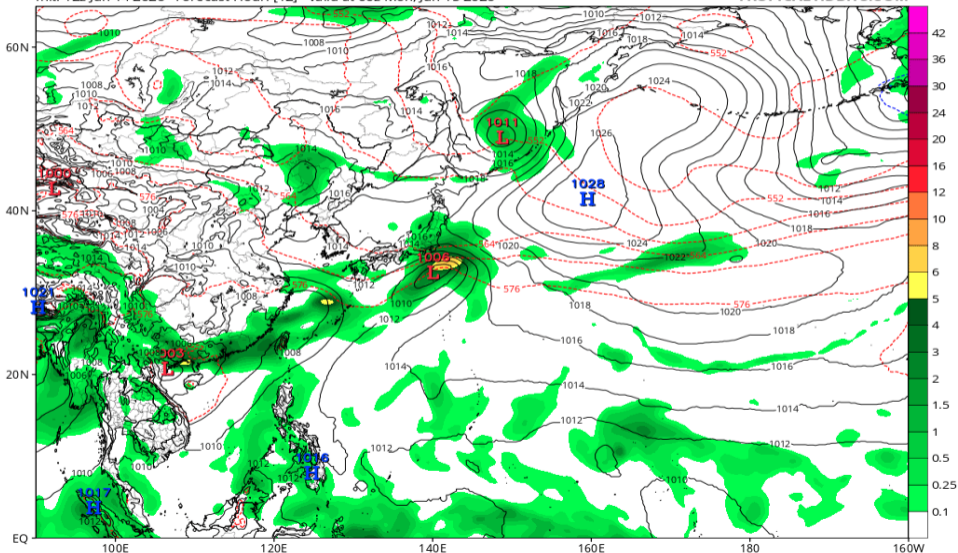


地上気圧配置 (AIFS 06/15 00Z 予報)

EC-AIFS 6-hour Averaged Precip Rate (mm/hr), MSLP (hPa) & 1000-500mb Thickness (dam)

Init: 12z Jun 14 2026 Forecast Hour: [12] valid at 00z Mon, Jun 15 2026

TROPICALTIDBITS.COM

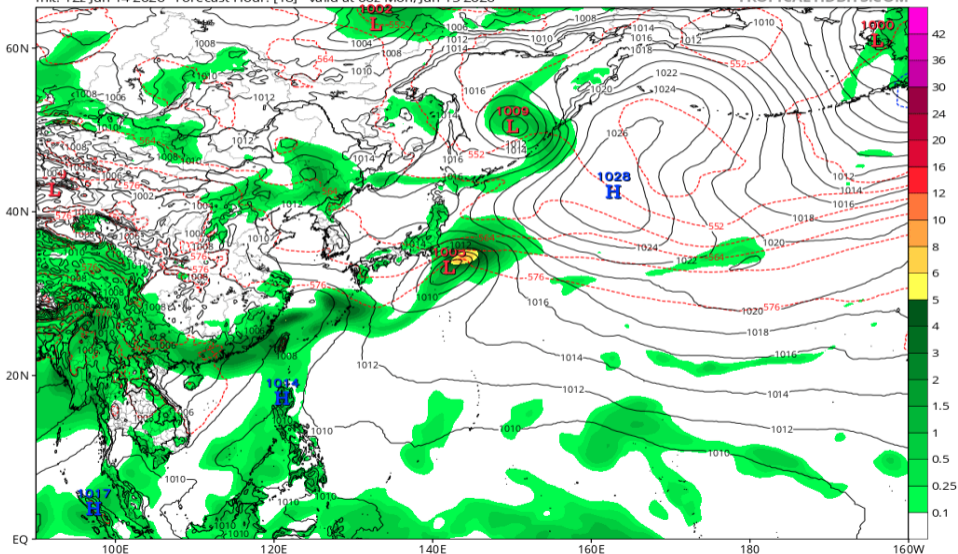


地上気圧配置 (AIFS 06/15 06Z 予報)

EC-AIFS 6-hour Averaged Precip Rate (mm/hr), MSLP (hPa) & 1000-500mb Thickness (dam)

Init: 12z Jun 14 2026 Forecast Hour: [18] valid at 06z Mon, Jun 15 2026

TROPICALTIDBITS.COM

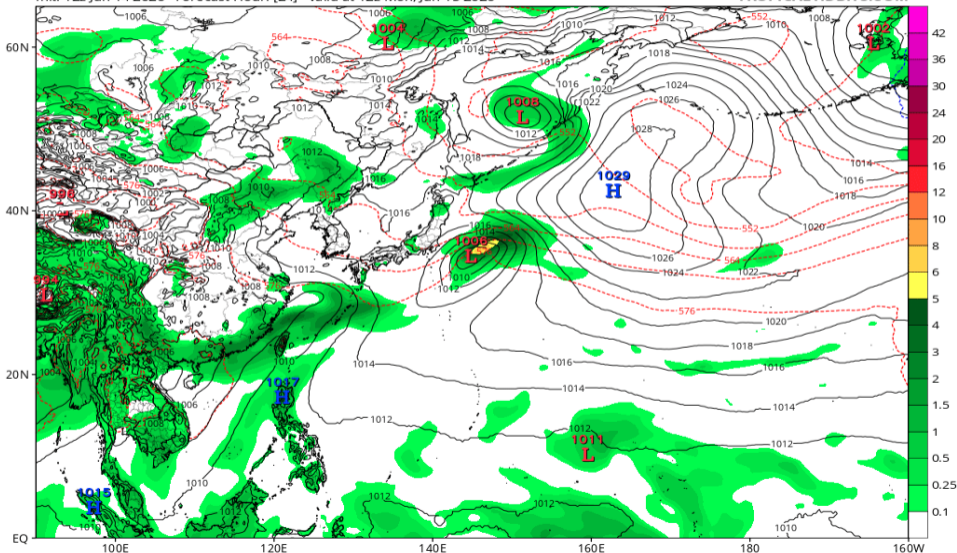


地上気圧配置 (AIFS 06/15 12Z 予報)

EC-AIFS 6-hour Averaged Precip Rate (mm/hr), MSLP (hPa) & 1000-500mb Thickness (dam)

Init: 12z Jun 14 2026 Forecast Hour: [24] valid at 12z Mon, Jun 15 2026

TROPICALTIDBITS.COM

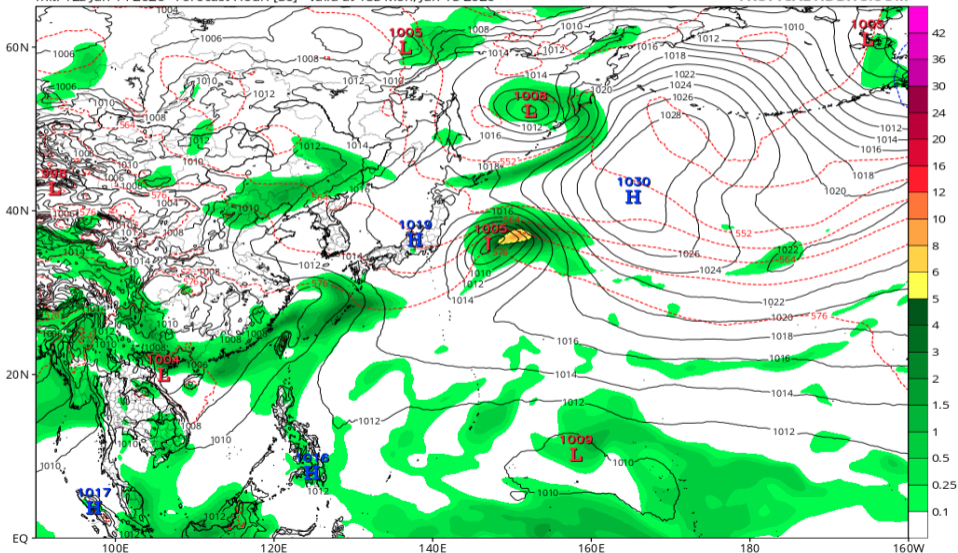


地上気圧配置 (AIFS 06/15 18Z 予報)

EC-AIFS 6-hour Averaged Precip Rate (mm/hr), MSLP (hPa) & 1000-500mb Thickness (dam)

Init: 12z Jun 14 2026 Forecast Hour: [30] valid at 18z Mon, Jun 15 2026

TROPICALTIDBITS.COM

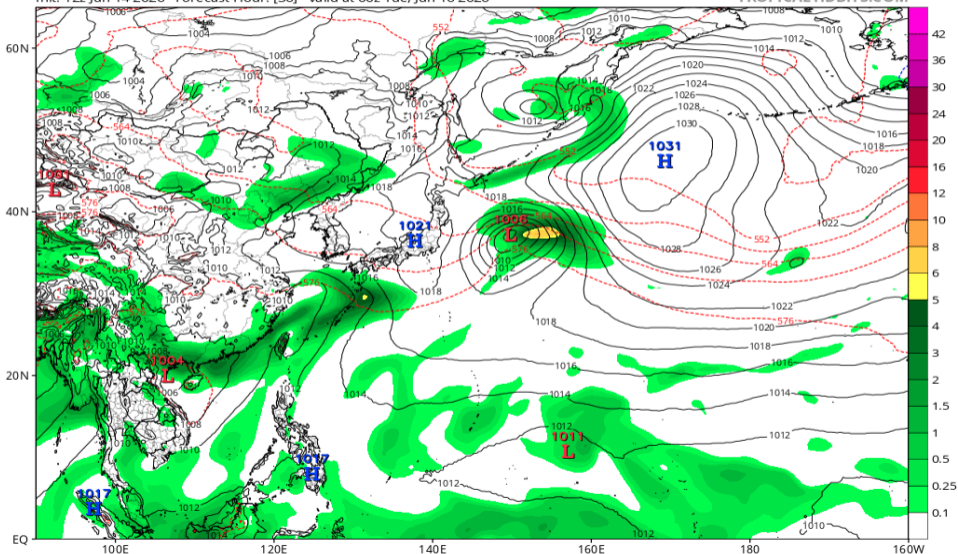


地上気圧配置 (AIFS 06/16 00Z 予報)

EC-AIFS 6-hour Averaged Precip Rate (mm/hr), MSLP (hPa) & 1000-500mb Thickness (dam)

Init: 12z Jun 14 2026 Forecast Hour: [36] valid at 00z Tue, Jun 16 2026

TROPICALTIDBITS.COM

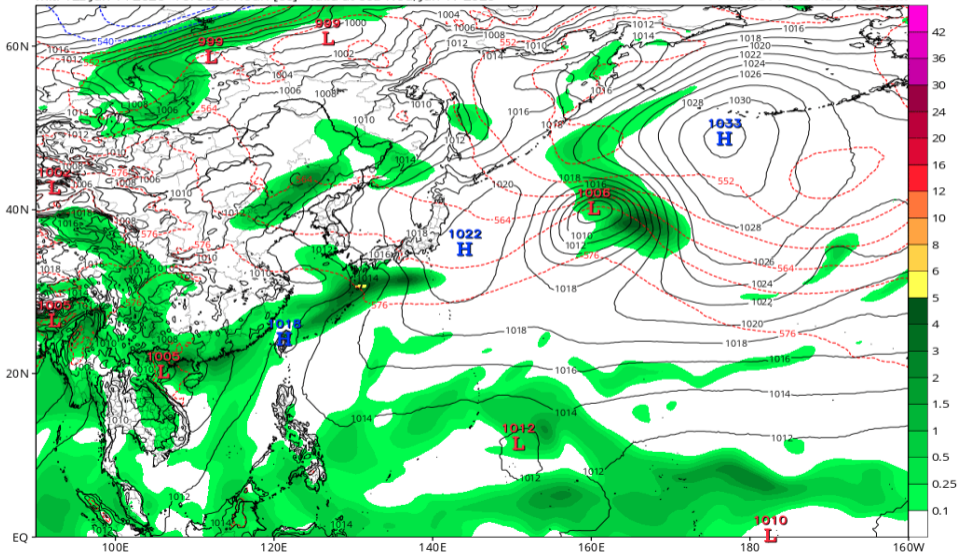


地上気圧配置 (AIFS 06/17 00Z 予報)

EC-AIFS 6-hour Averaged Precip Rate (mm/hr), MSLP (hPa) & 1000-500mb Thickness (dam)

Init: 12z Jun 14 2026 Forecast Hour: [60] valid at 00z Wed, Jun 17 2026

TROPICALTIDBITS.COM

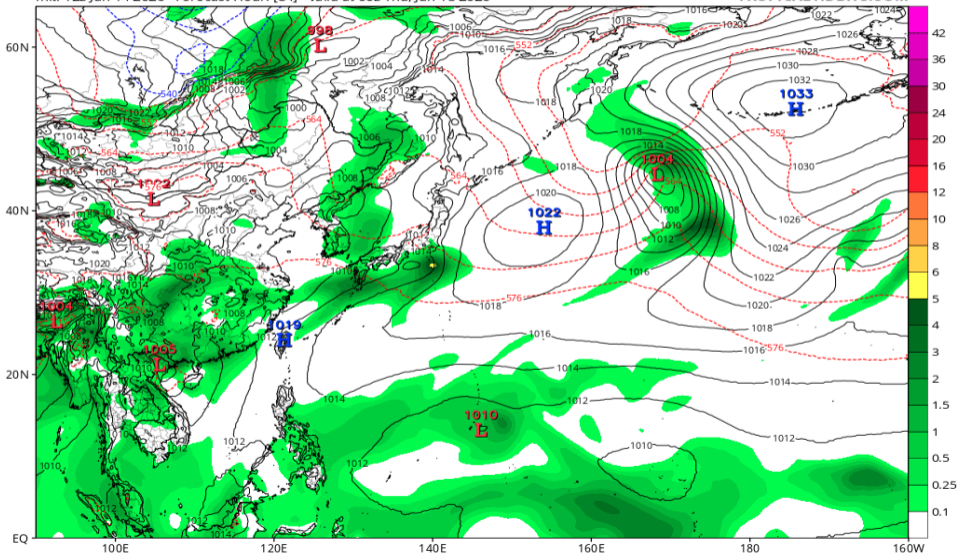


地上気圧配置 (AIFS 06/18 00Z 予報)

EC-AIFS 6-hour Averaged Precip Rate (mm/hr), MSLP (hPa) & 1000-500mb Thickness (dam)

Init: 12z Jun 14 2026 Forecast Hour: [84] valid at 00z Thu, Jun 18 2026

TROPICALTIDBITS.COM

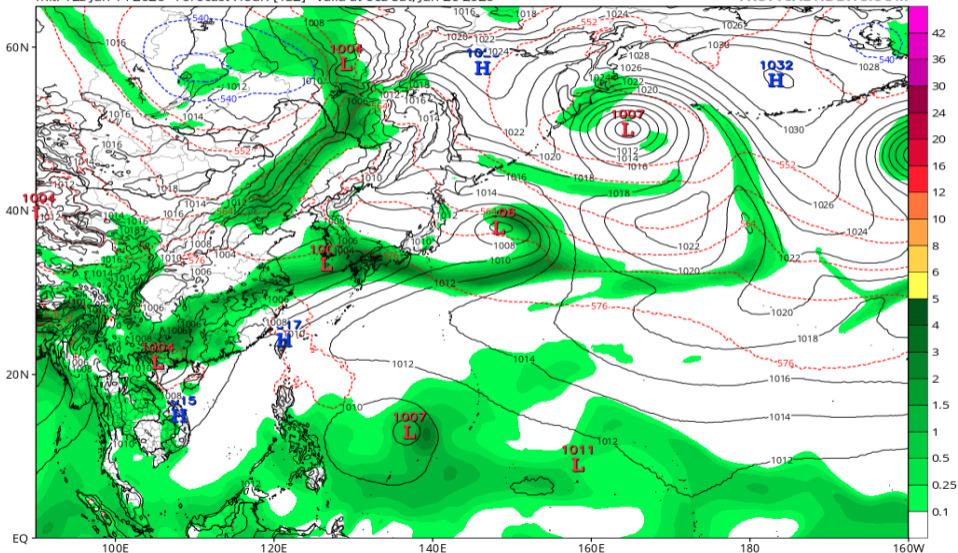


地上気圧配置 (AIFS 06/20 00Z 予報)

EC-AIFS 6-hour Averaged Precip Rate (mm/hr), MSLP (hPa) & 1000-500mb Thickness (dam)

Init: 12z Jun 14 2026 Forecast Hour: [132] valid at 00z Sat, Jun 20 2026

TROPICALTIDBITS.COM

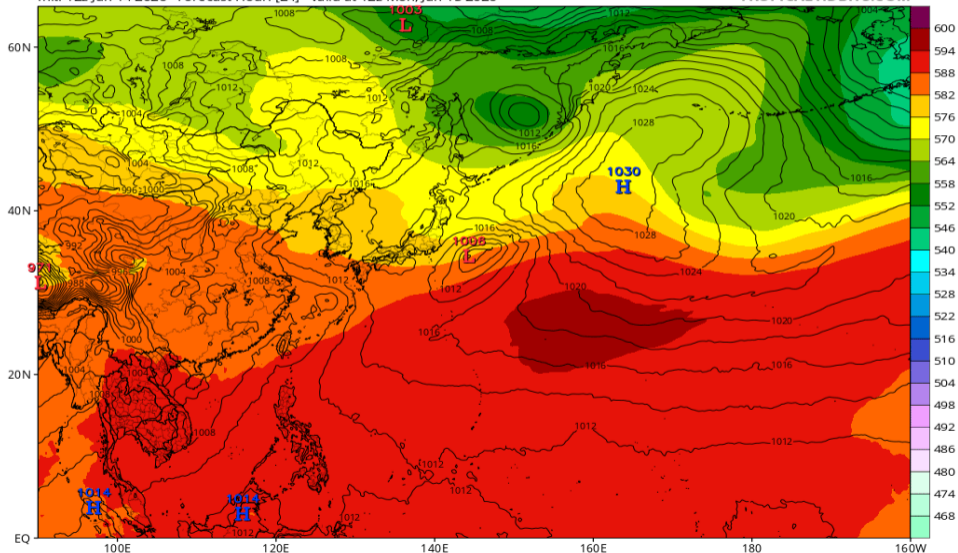


Z500/地上気圧配置 (GFS 06/15 12Z 予報)

GFS 500mb Geopotential Height (dam) & MSLP (mb)

Init: 12z Jun 14 2026 Forecast Hour: [24] valid at 12z Mon, Jun 15 2026

TROPICALTIDBITS.COM

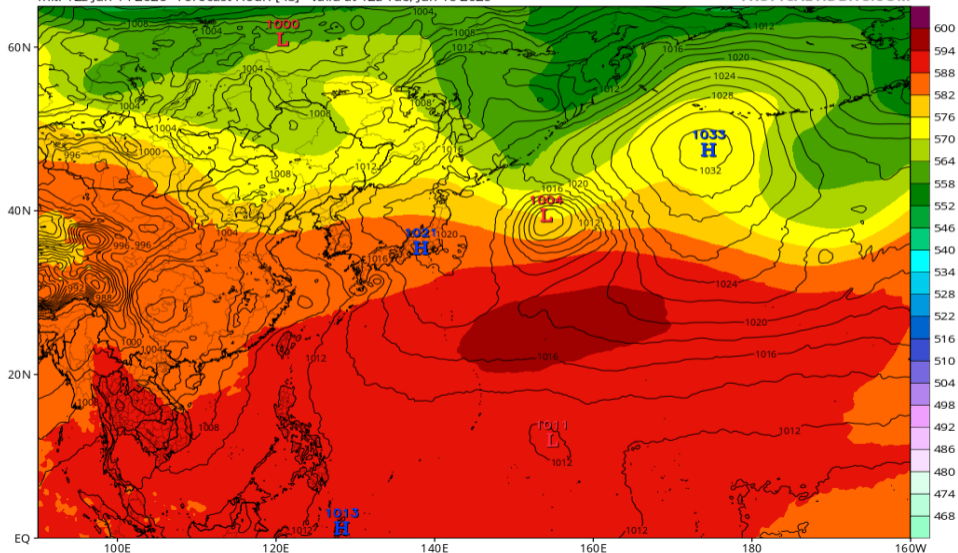


Z500/地上気圧配置 (GFS 06/16 12Z 予報)

GFS 500mb Geopotential Height (dam) & MSLP (mb)

Init: 12z Jun 14 2026 Forecast Hour: [48] valid at 12z Tue, Jun 16 2026

TROPICALTIDBITS.COM

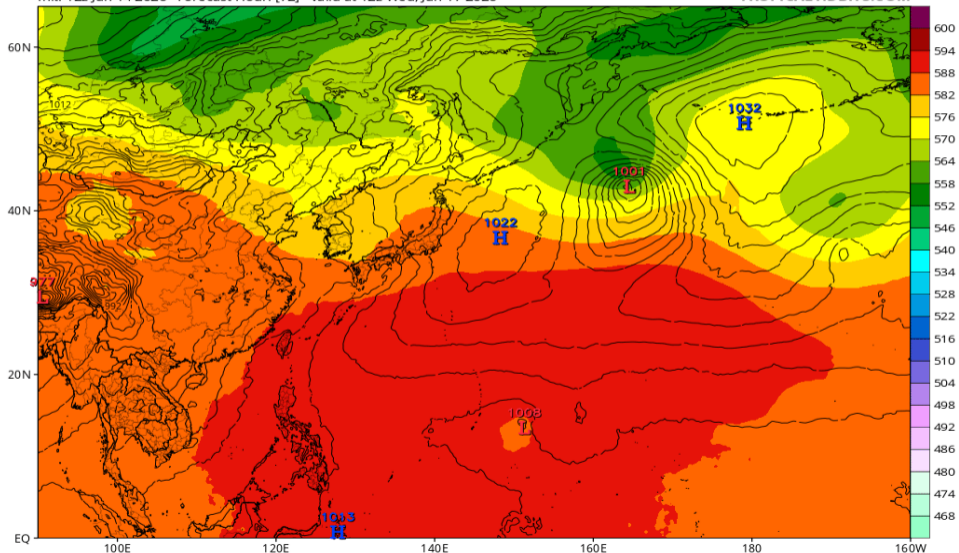


Z500/地上気圧配置 (GFS 06/17 12Z 予報)

GFS 500mb Geopotential Height (dam) & MSLP (mb)

Init: 12z Jun 14 2026 Forecast Hour: [72] valid at 12z Wed, Jun 17 2026

TROPICALTIDBITS.COM

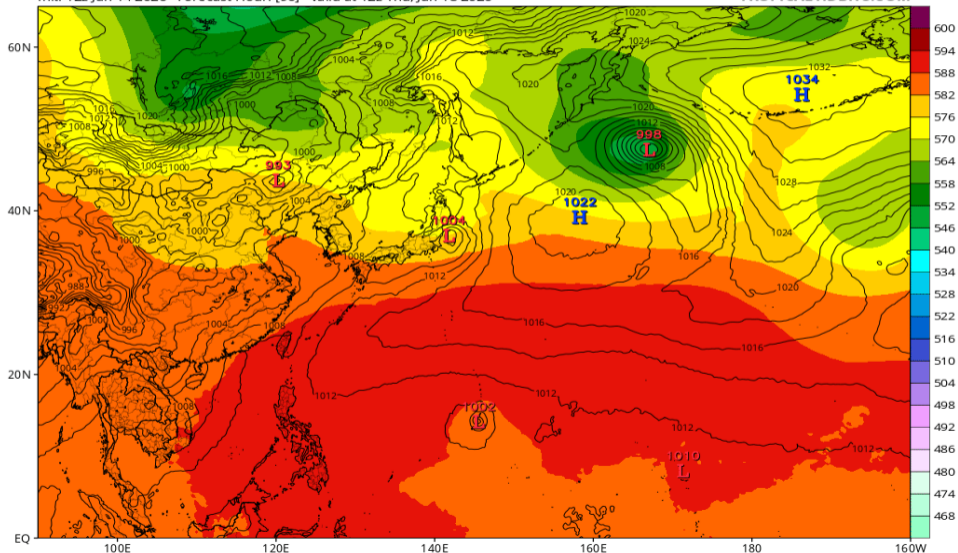


Z500/地上気圧配置 (GFS 06/18 12Z 予報)

GFS 500mb Geopotential Height (dam) & MSLP (mb)

Init: 12z Jun 14 2026 Forecast Hour: [96] valid at 12z Thu, Jun 18 2026

TROPICALTIDBITS.COM

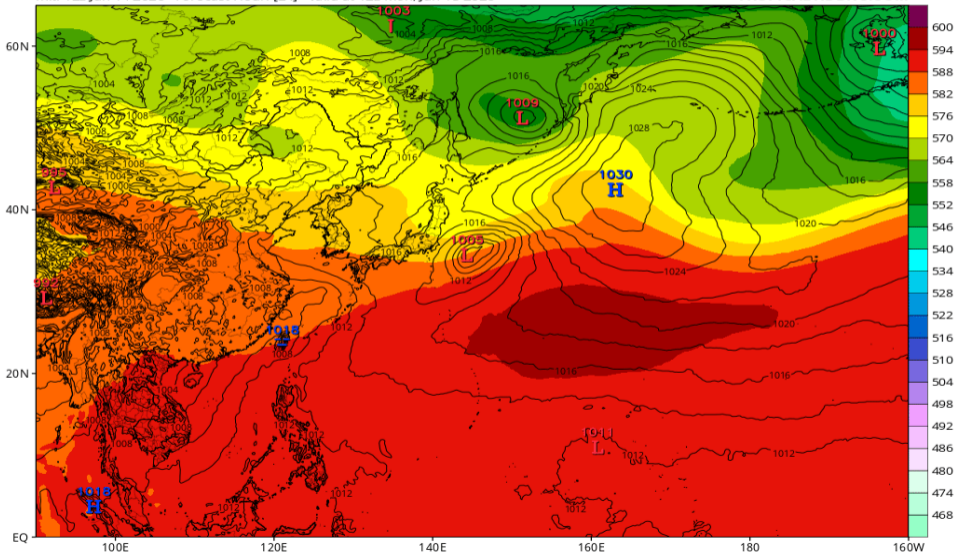


Z500/地上気圧配置 (ECMWF 06/15 12Z 予報)

ECMWF 500mb Geopotential Height (dam) & MSLP (mb)

Init: 12z Jun 14 2026 Forecast Hour: [24] valid at 12z Mon, Jun 15 2026

TROPICALTIDBITS.COM

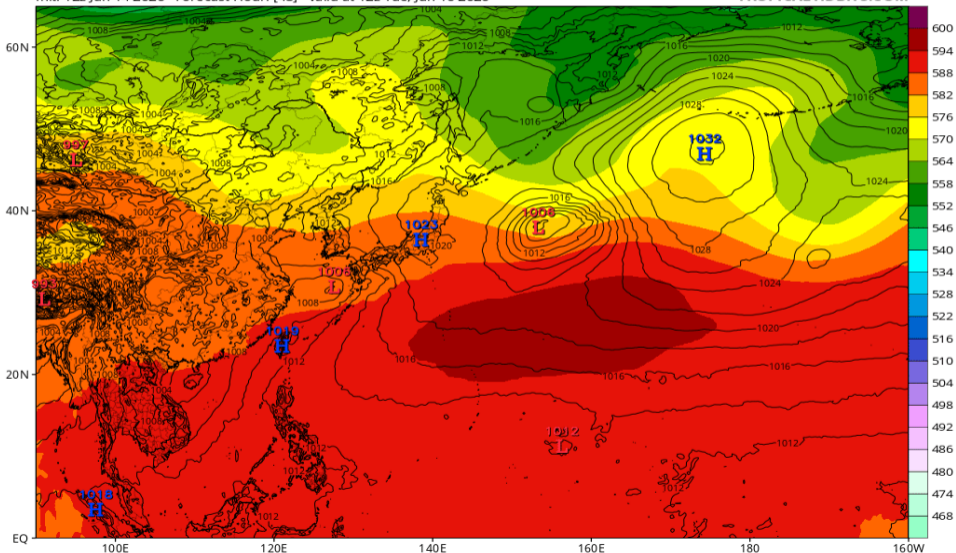


Z500/地上気圧配置 (ECMWF 06/16 12Z 予報)

ECMWF 500mb Geopotential Height (dam) & MSLP (mb)

Init: 12z Jun 14 2026 Forecast Hour: [48] valid at 12z Tue, Jun 16 2026

TROPICALTIDBITS.COM

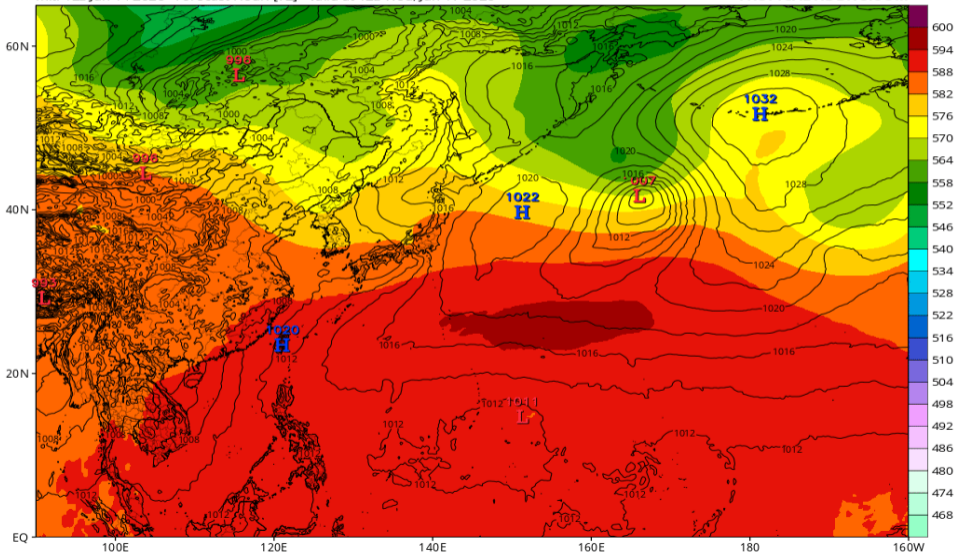


Z500/地上気圧配置 (ECMWF 06/17 12Z 予報)

ECMWF 500mb Geopotential Height (dam) & MSLP (mb)

Init: 12z Jun 14 2026 Forecast Hour: [72] valid at 12z Wed, Jun 17 2026

TROPICALTIDBITS.COM

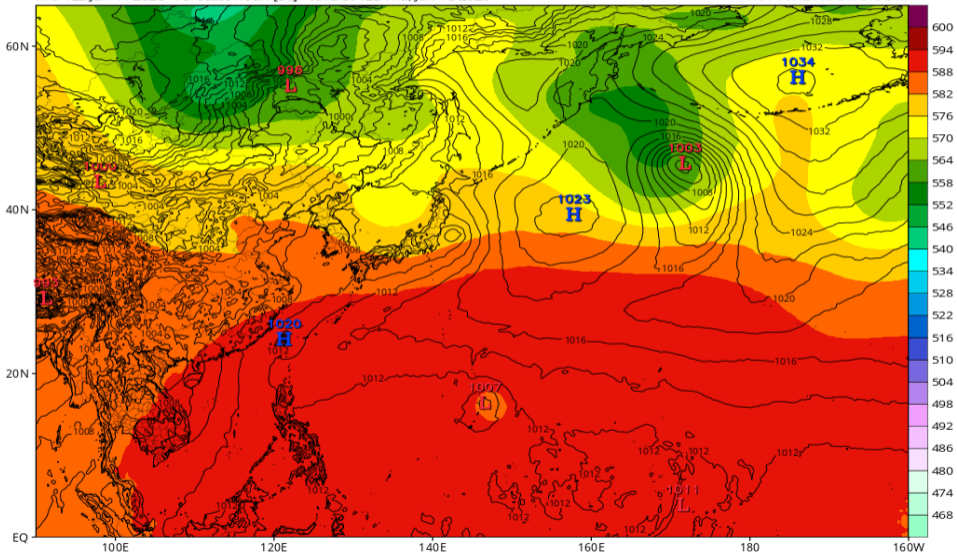


Z500/地上気圧配置 (ECMWF 06/18 12Z 予報)

ECMWF 500mb Geopotential Height (dam) & MSLP (mb)

Init: 12z Jun 14 2026 Forecast Hour: [96] valid at 12z Thu, Jun 18 2026

TROPICALTIDBITS.COM

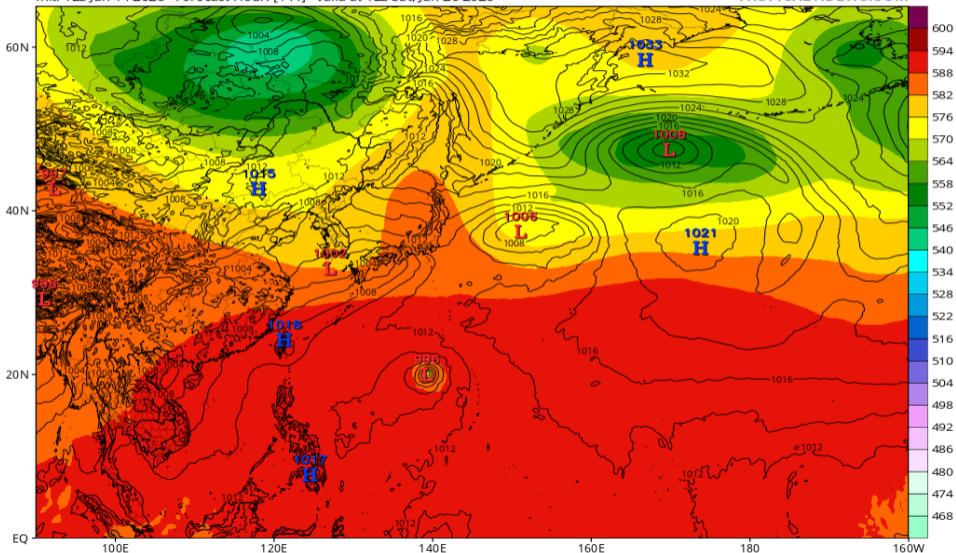


Z500/地上気圧配置 (ECMWF 06/20 12Z 予報)

ECMWF 500mb Geopotential Height (dam) & MSLP (mb)

Init: 12z Jun 14 2026 Forecast Hour: [144] valid at 12z Sat, Jun 20 2026

TROPICALTIDBITS.COM

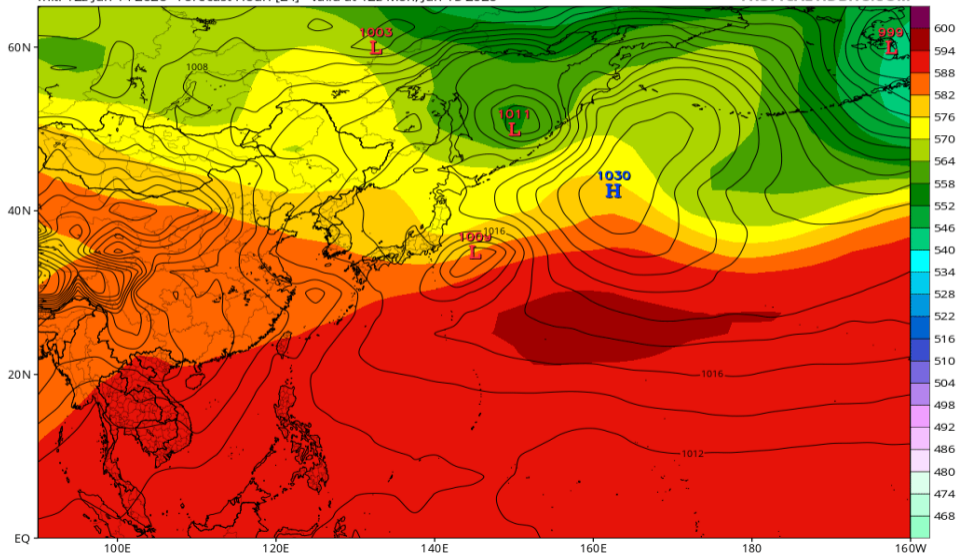


Z500/地上気圧配置 (JMA-GSM 06/15 12Z 予報)

JMA 500mb Geopotential Height (dam) & MSLP (mb)

Init: 12z Jun 14 2026 Forecast Hour: [24] valid at 12z Mon, Jun 15 2026

TROPICALTIDBITS.COM

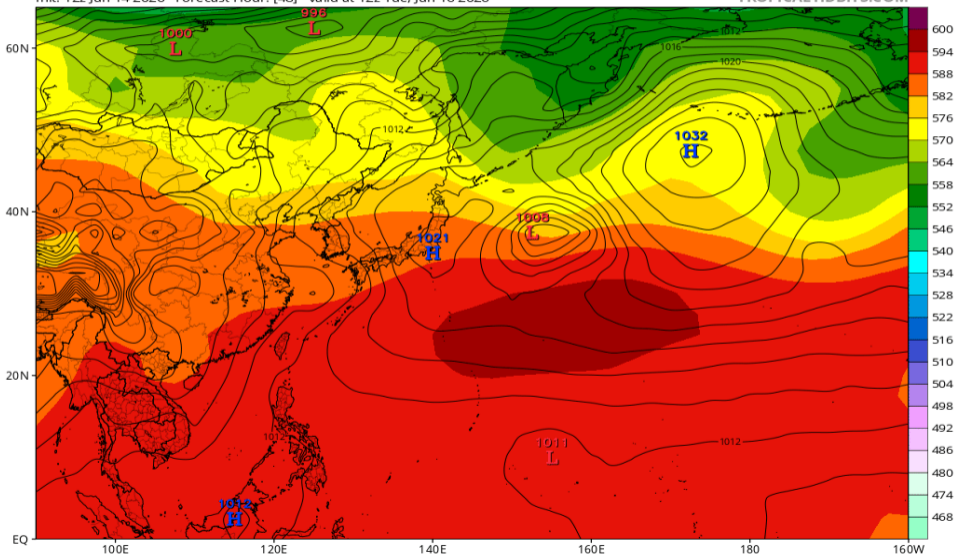


Z500/地上気圧配置 (JMA-GSM 06/16 12Z 予報)

JMA 500mb Geopotential Height (dam) & MSLP (mb)

Init: 12z Jun 14 2026 Forecast Hour: [48] valid at 12z Tue, Jun 16 2026

TROPICALTIDBITS.COM

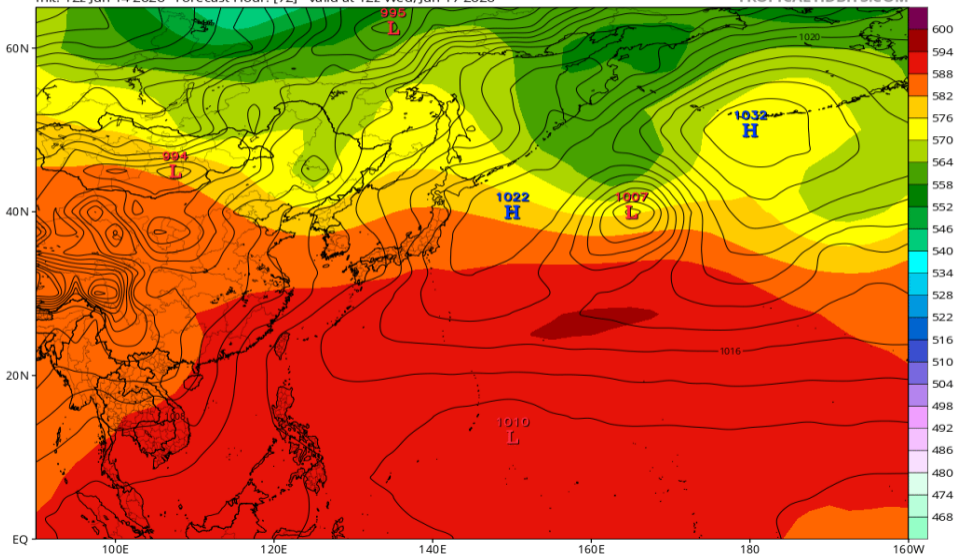


Z500/地上気圧配置 (JMA-GSM 06/17 12Z 予報)

JMA 500mb Geopotential Height (dam) & MSLP (mb)

Init: 12z Jun 14 2026 Forecast Hour: [72] valid at 12z Wed, Jun 17 2026

TROPICALTIDBITS.COM

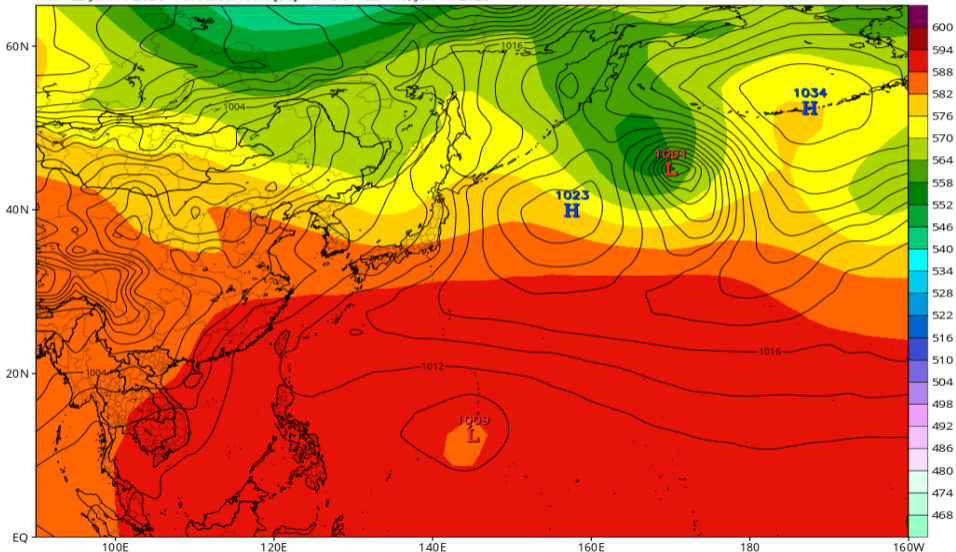


Z500/地上気圧配置 (JMA-GSM 06/18 12Z 予報)

JMA 500mb Geopotential Height (dam) & MSLP (mb)

Init: 12z Jun 14 2026 Forecast Hour: [96] valid at 12z Thu, Jun 18 2026

TROPICALTIDBITS.COM

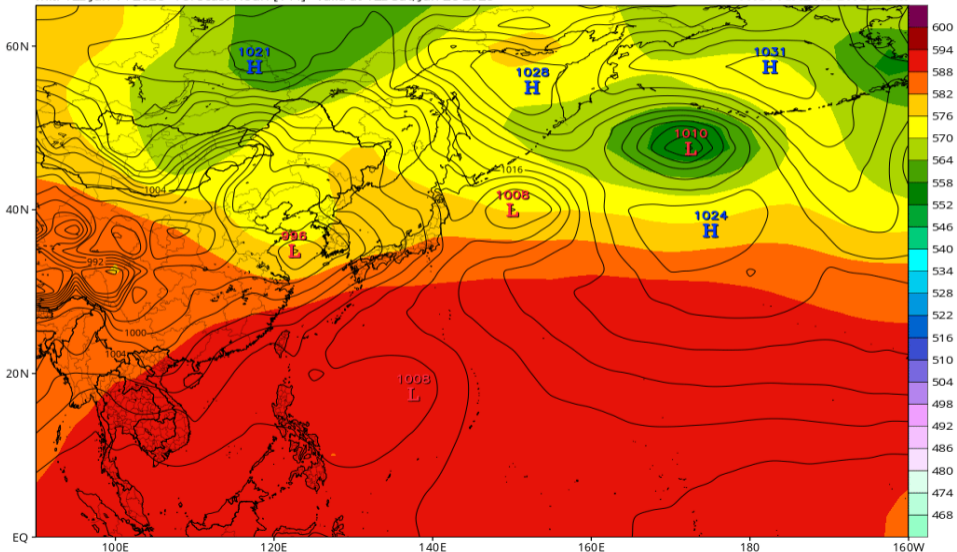


Z500/地上気圧配置 (JMA-GSM 06/20 12Z 予報)

JMA 500mb Geopotential Height (dam) & MSLP (mb)

Init: 12z Jun 14 2026 Forecast Hour: [144] valid at 12z Sat, Jun 20 2026

TROPICALTIDBITS.COM

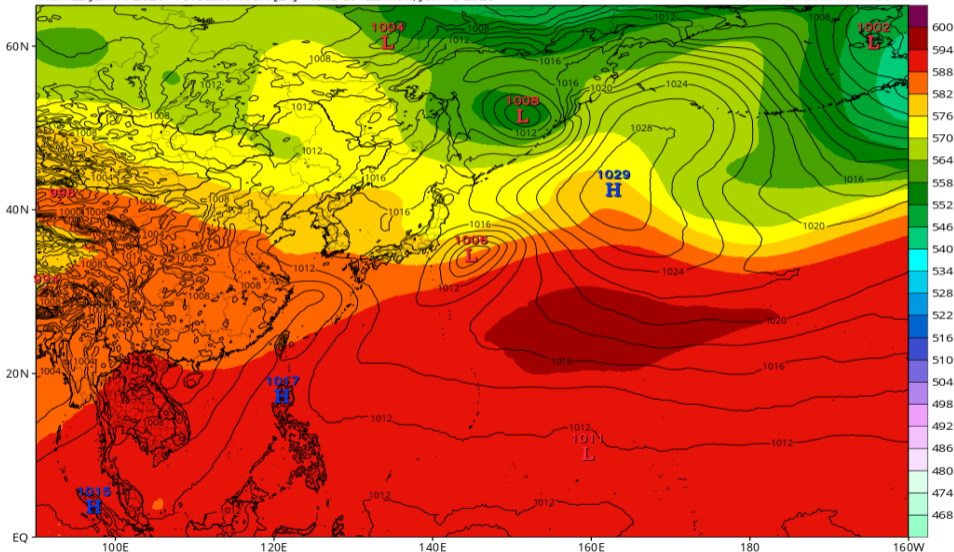


Z500/地上気圧配置 (AIFS 06/15 12Z 予報)

EC-AIFS 500mb Geopotential Height (dam) & MSLP (mb)

Init: 12z Jun 14 2026 Forecast Hour: [24] valid at 12z Mon, Jun 15 2026

TROPICALTIDBITS.COM

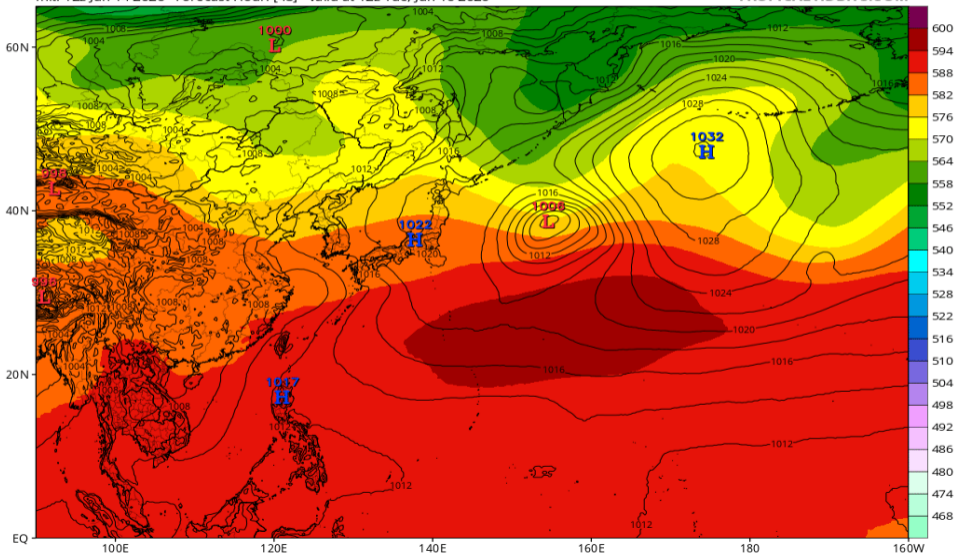


Z500/地上気圧配置 (AIFS 06/16 12Z 予報)

EC-AIFS 500mb Geopotential Height (dam) & MSLP (mb)

Init: 12z Jun 14 2026 Forecast Hour: [48] valid at 12z Tue, Jun 16 2026

TROPICALTIDBITS.COM

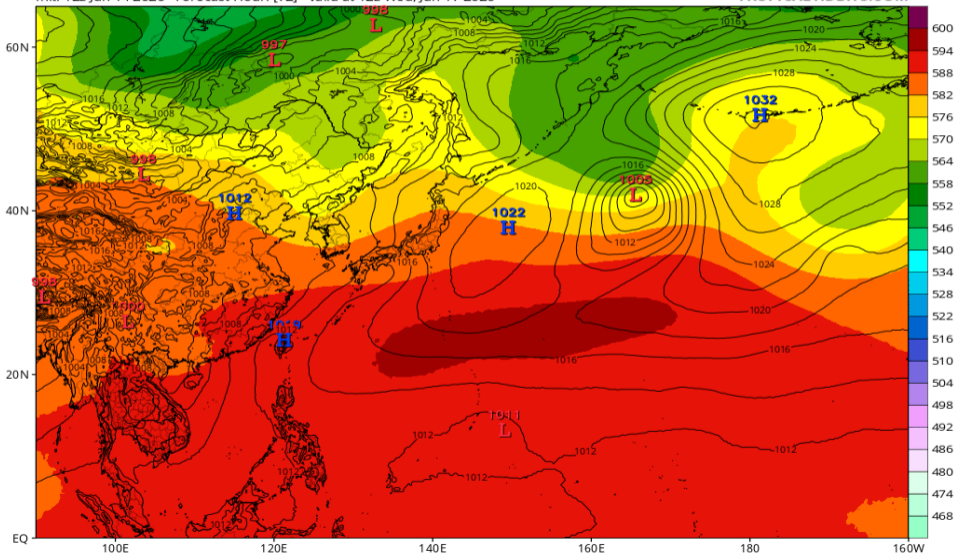


Z500/地上気圧配置 (AIFS 06/17 12Z 予報)

EC-AIFS 500mb Geopotential Height (dam) & MSLP (mb)

Init: 12z Jun 14 2026 Forecast Hour: [72] valid at 12z Wed, Jun 17 2026

TROPICALTIDBITS.COM

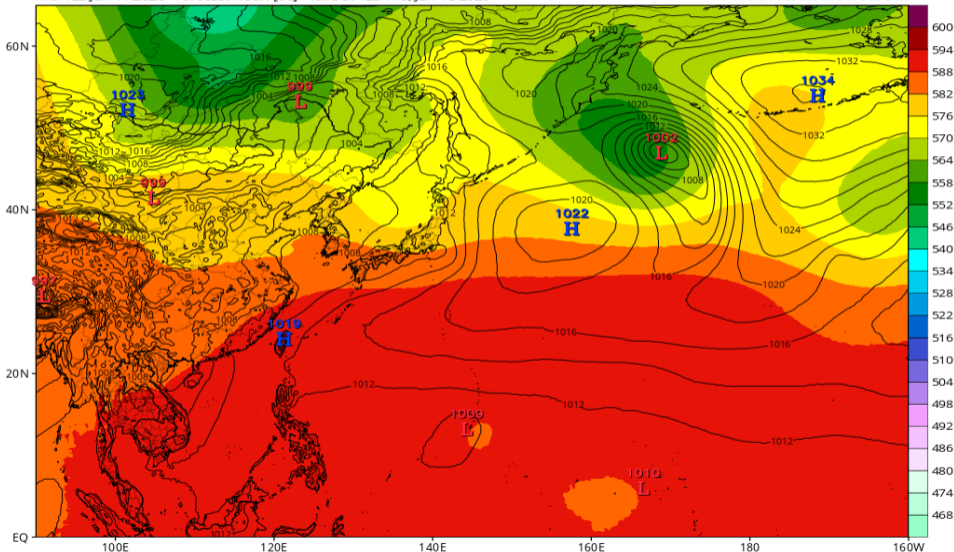


Z500/地上気圧配置 (AIFS 06/18 12Z 予報)

EC-AIFS 500mb Geopotential Height (dam) & MSLP (mb)

Init: 12z Jun 14 2026 Forecast Hour: [96] valid at 12z Thu, Jun 18 2026

TROPICALTIDBITS.COM

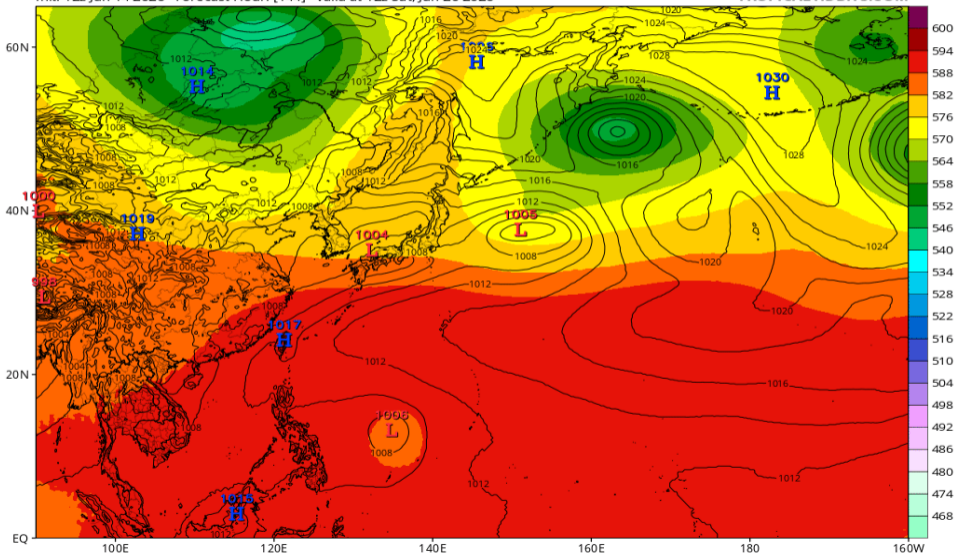


Z500/地上気圧配置 (AIFS 06/20 12Z 予報)

EC-AIFS 500mb Geopotential Height (dam) & MSLP (mb)

Init: 12z Jun 14 2026 Forecast Hour: [144] valid at 12z Sat, Jun 20 2026

TROPICALTIDBITS.COM

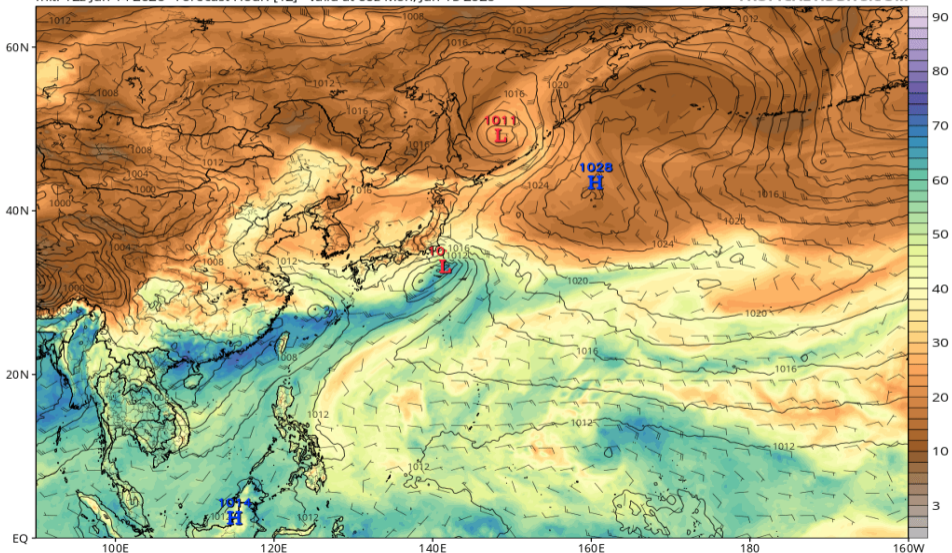


可降水量 (GFS 06/15 00Z 予報)

GFS MSLP (mb), Total Precipitable Water (mm), and 850mb Wind (kt)

Init: 12z Jun 14 2026 Forecast Hour: [12] valid at 00z Mon, Jun 15 2026

TROPICALTIDBITS.COM

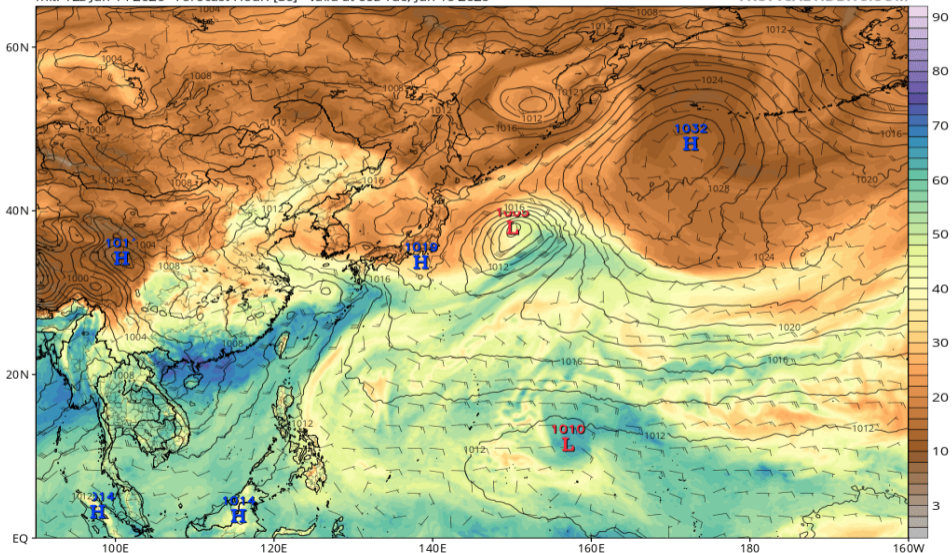


可降水量 (GFS 06/16 00Z 予報)

GFS MSLP (mb), Total Precipitable Water (mm), and 850mb Wind (kt)

Init: 12z Jun 14 2026 Forecast Hour: [36] valid at 00z Tue, Jun 16 2026

TROPICALTIDBITS.COM

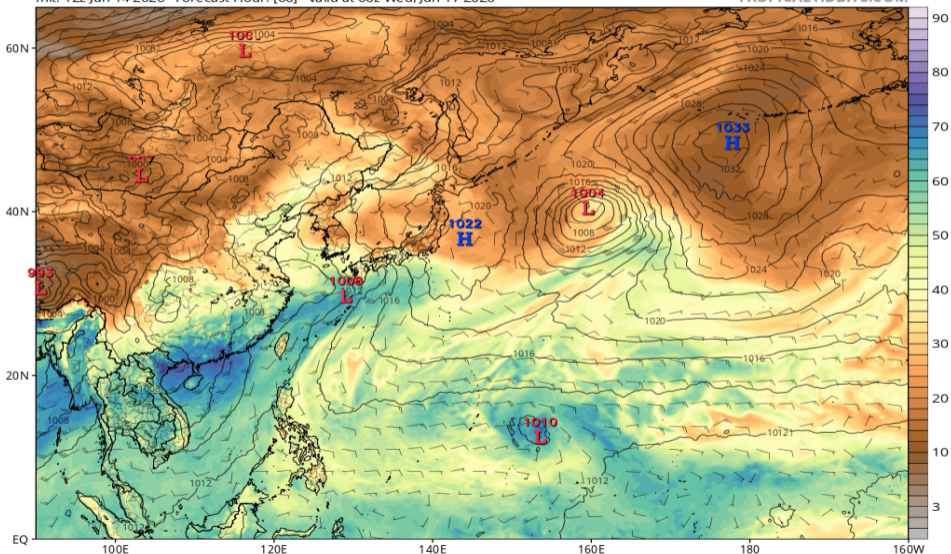


可降水量 (GFS 06/17 00Z 予報)

GFS MSLP (mb), Total Precipitable Water (mm), and 850mb Wind (kt)

Init: 12z Jun 14 2026 Forecast Hour: [60] valid at 00z Wed, Jun 17 2026

TROPICALTIDBITS.COM

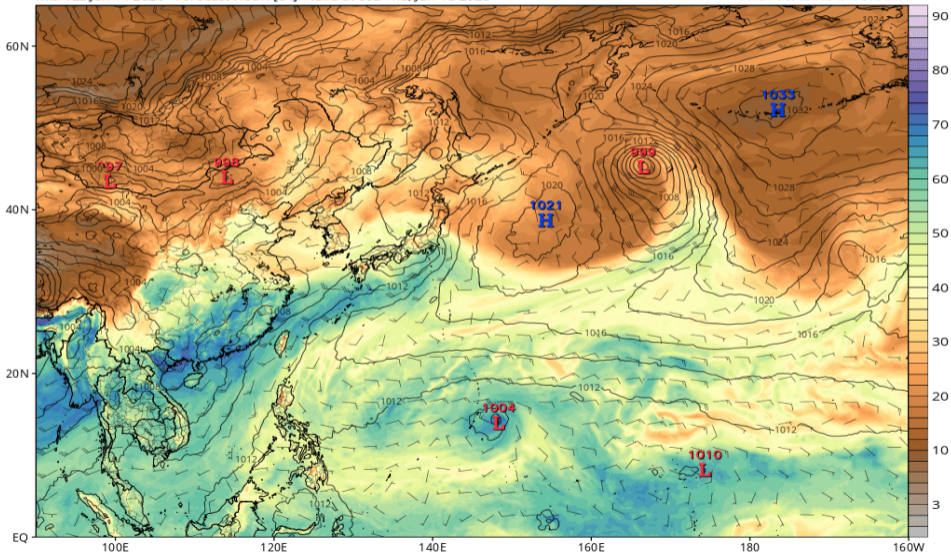


可降水量 (GFS 06/18 00Z 予報)

GFS MSLP (mb), Total Precipitable Water (mm), and 850mb Wind (kt)

Init: 12z Jun 14 2026 Forecast Hour: [84] valid at 00z Thu, Jun 18 2026

TROPICALTIDBITS.COM

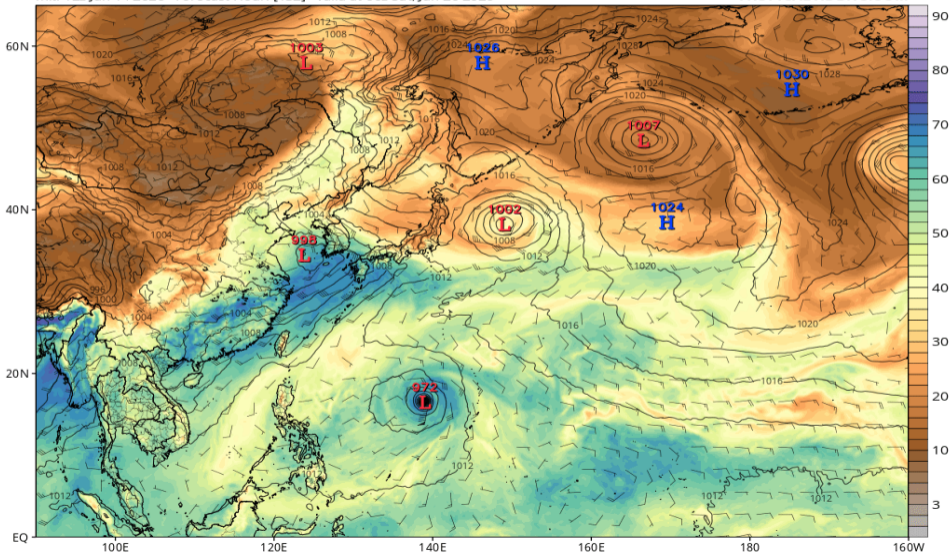


可降水量 (GFS 06/20 00Z 予報)

GFS MSLP (mb), Total Precipitable Water (mm), and 850mb Wind (kt)

Init: 12z Jun 14 2026 Forecast Hour: [132] valid at 00z Sat, Jun 20 2026

TROPICALTIDBITS.COM

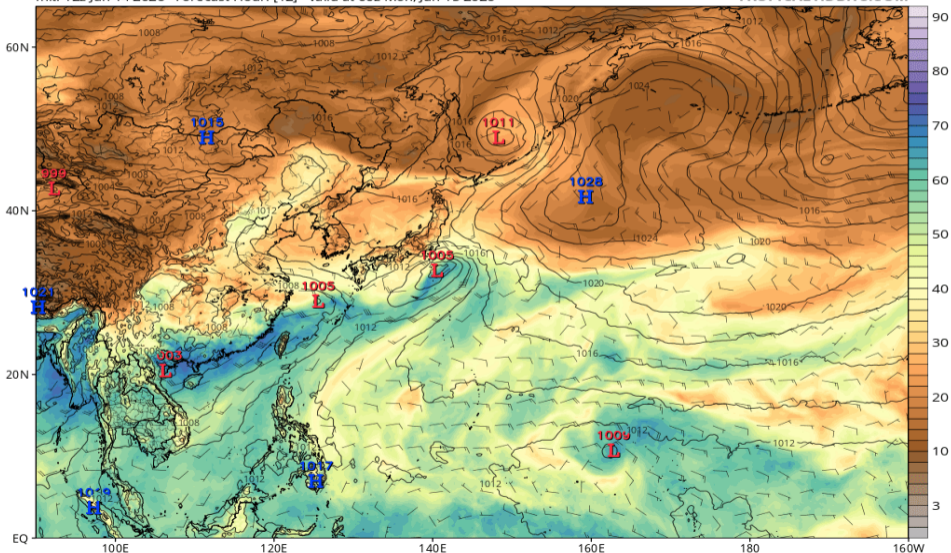


可降水量 (ECMWF 06/15 00Z 予報)

ECMWF MSLP (mb), Total Precipitable Water (mm), and 850mb Wind (kt)

Init: 12z Jun 14 2026 Forecast Hour: [12] valid at 00z Mon, Jun 15 2026

TROPICALTIDBITS.COM

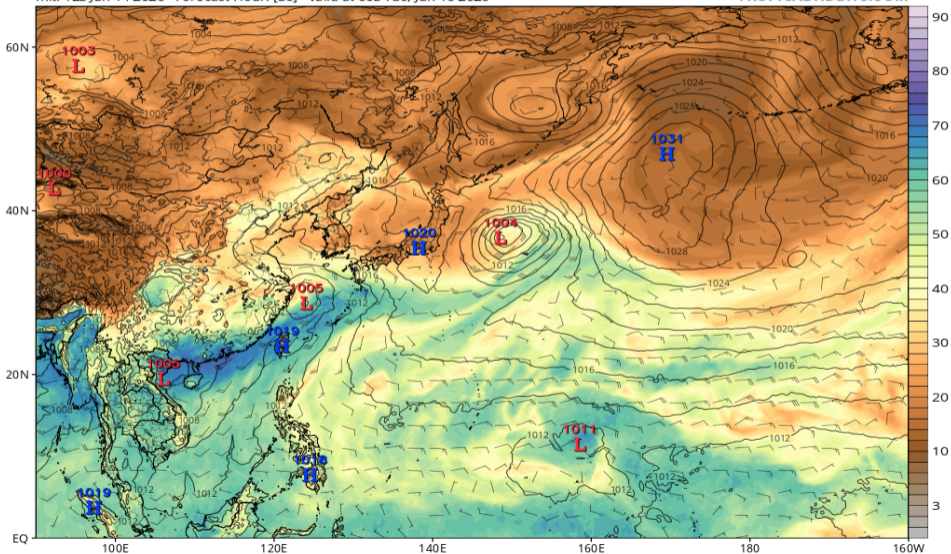


可降水量 (ECMWF 06/16 00Z 予報)

ECMWF MSLP (mb), Total Precipitable Water (mm), and 850mb Wind (kt)

Init: 12z Jun 14 2026 Forecast Hour: [36] valid at 00z Tue, Jun 16 2026

TROPICALTIDBITS.COM

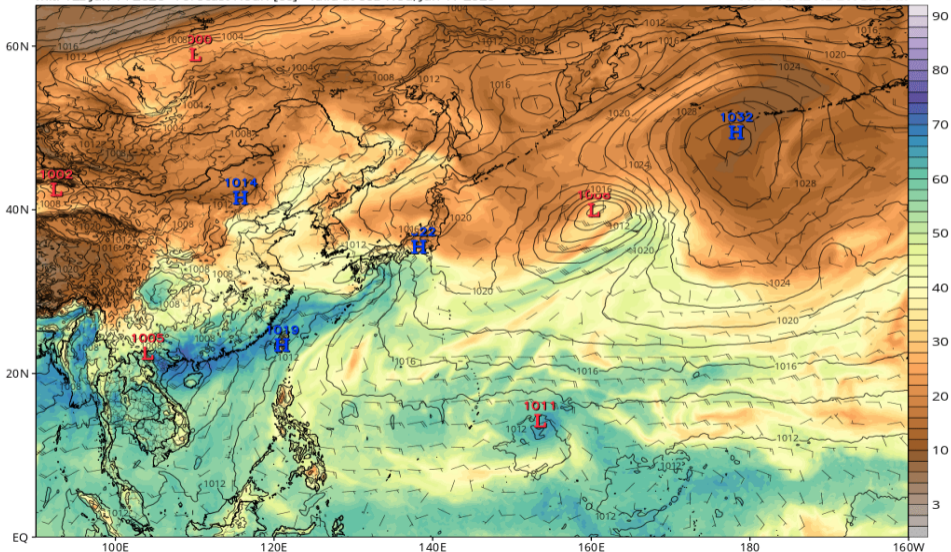


可降水量 (ECMWF 06/17 00Z 予報)

ECMWF MSLP (mb), Total Precipitable Water (mm), and 850mb Wind (kt)

Init: 12z Jun 14 2026 Forecast Hour: [60] valid at 00z Wed, Jun 17 2026

TROPICALTIDBITS.COM

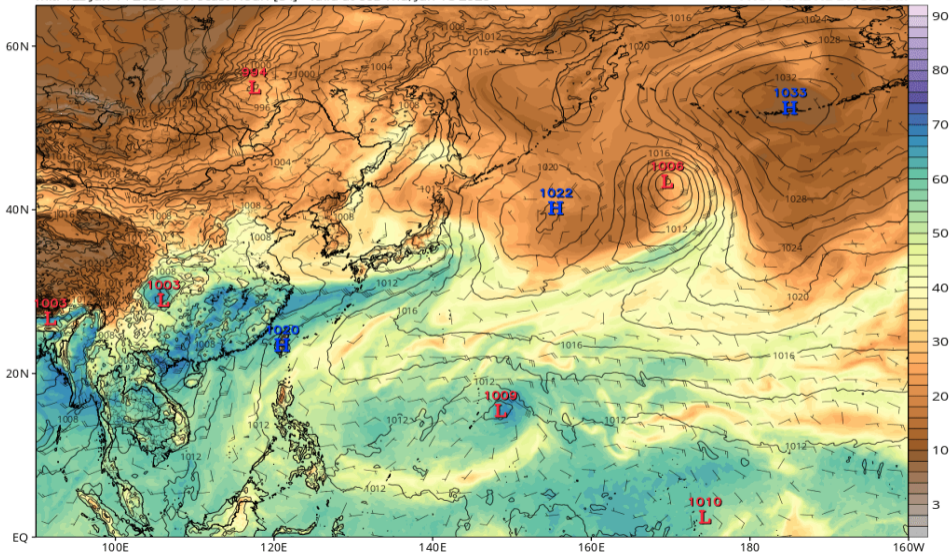


可降水量 (ECMWF 06/18 00Z 予報)

ECMWF MSLP (mb), Total Precipitable Water (mm), and 850mb Wind (kt)

Init: 12z Jun 14 2026 Forecast Hour: [84] valid at 00z Thu, Jun 18 2026

TROPICALTIDBITS.COM

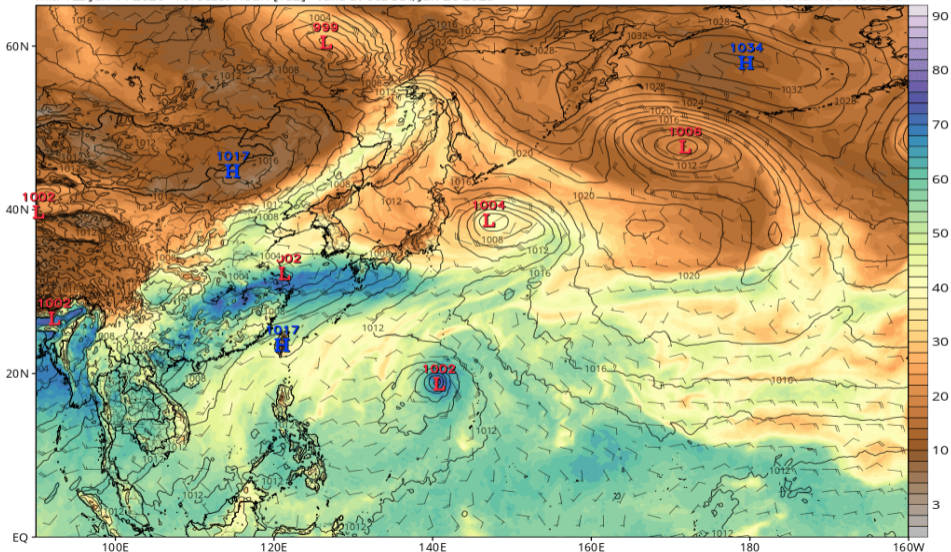


可降水量 (ECMWF 06/20 00Z 予報)

ECMWF MSLP (mb), Total Precipitable Water (mm), and 850mb Wind (kt)

Init: 12z Jun 14 2026 Forecast Hour: [132] valid at 00z Sat, Jun 20 2026

TROPICALTIDBITS.COM

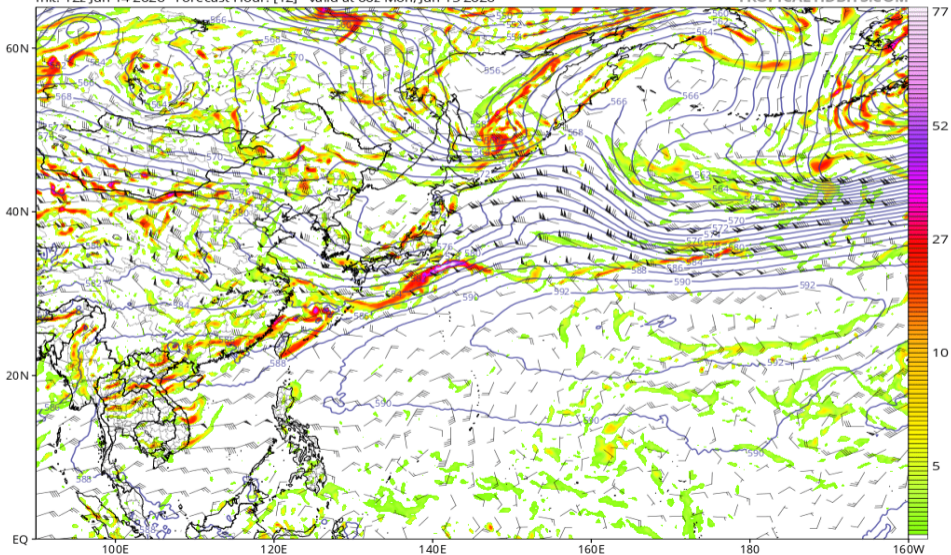


渦度 850, Z500, UV200 (GFS 06/15 00Z 予報)

GFS 850 hPa Cyclonic Vorticity (10^5 s^{-1}), 500 hPa Height (dam), and 200 hPa Wind (kt)

Init: 12z Jun 14 2026 Forecast Hour: [12] valid at 00z Mon, Jun 15 2026

TROPICALTIDBITS.COM

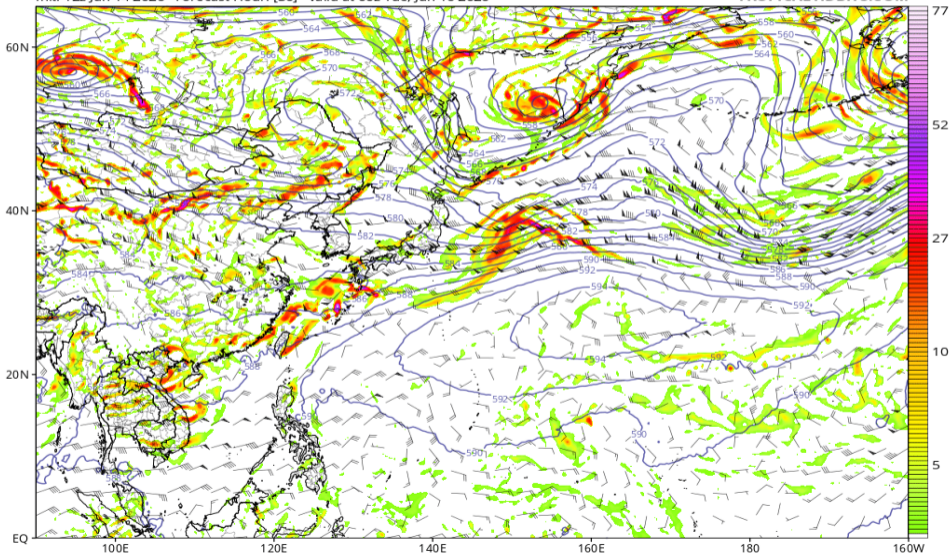


渦度 850, Z500, UV200 (GFS 06/16 00Z 予報)

GFS 850 hPa Cyclonic Vorticity (10^5 s^{-1}), 500 hPa Height (dam), and 200 hPa Wind (kt)

Init: 12z Jun 14 2026 Forecast Hour: [36] valid at 00z Tue, Jun 16 2026

TROPICALTIDBITS.COM

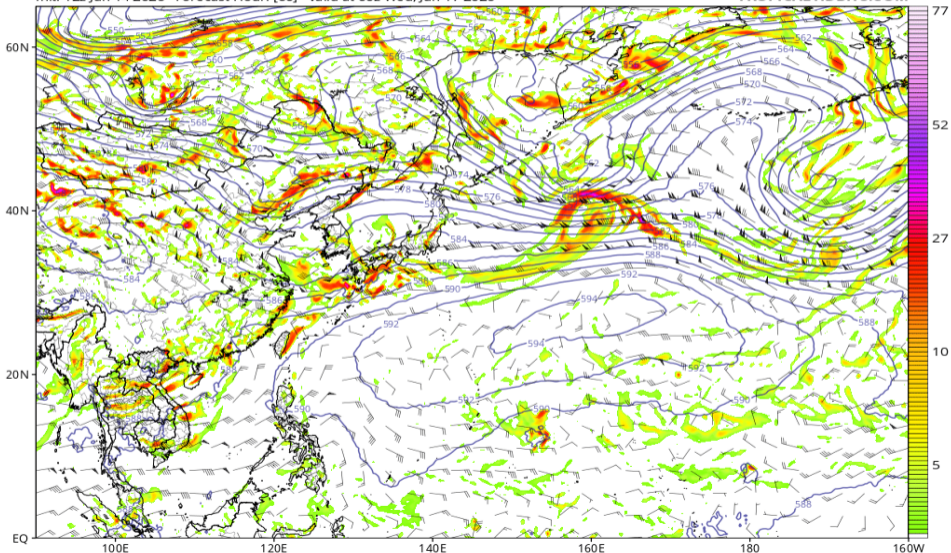


渦度 850, Z500, UV200 (GFS 06/17 00Z 予報)

GFS 850 hPa Cyclonic Vorticity (10^5 s^{-1}), 500 hPa Height (dam), and 200 hPa Wind (kt)

Init: 12z Jun 14 2026 Forecast Hour: [60] valid at 00z Wed, Jun 17 2026

TROPICALTIDBITS.COM

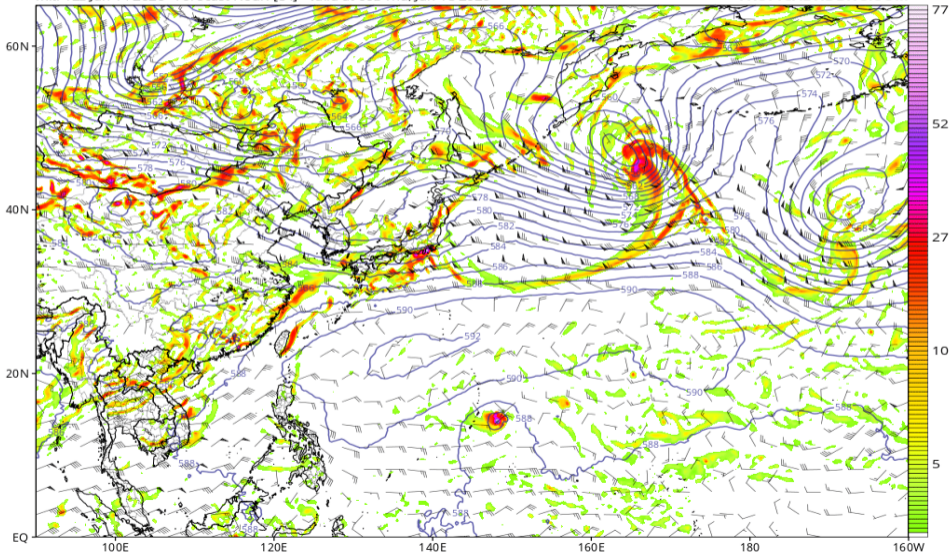


渦度 850, Z500, UV200 (GFS 06/18 00Z 予報)

GFS 850 hPa Cyclonic Vorticity (10^5 s^{-1}), 500 hPa Height (dam), and 200 hPa Wind (kt)

Init: 12z Jun 14 2026 Forecast Hour: [84] valid at 00z Thu, Jun 18 2026

TROPICALTIDBITS.COM

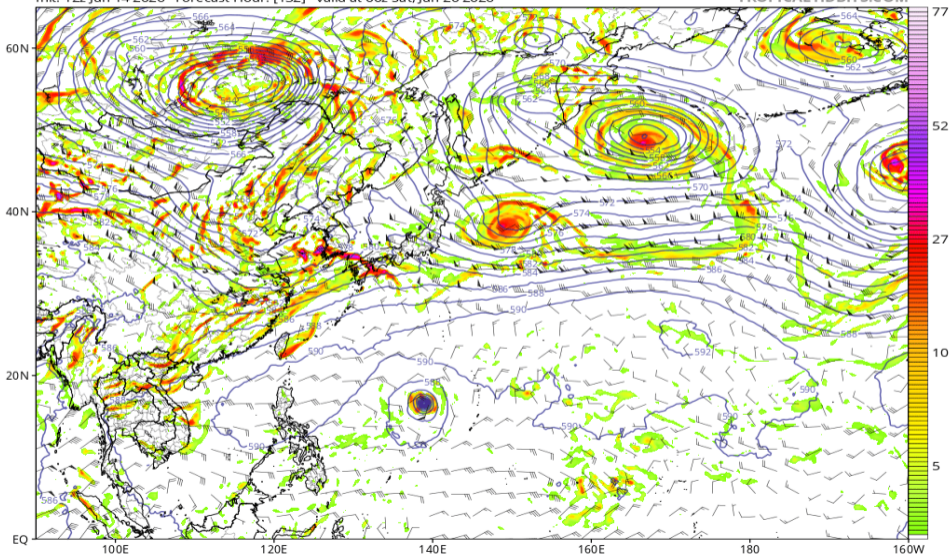


渦度 850, Z500, UV200 (GFS 06/20 00Z 予報)

GFS 850 hPa Cyclonic Vorticity (10^5 s^{-1}), 500 hPa Height (dam), and 200 hPa Wind (kt)

Init: 12z Jun 14 2026 Forecast Hour: [132] valid at 00z Sat, Jun 20 2026

TROPICALTIDBITS.COM

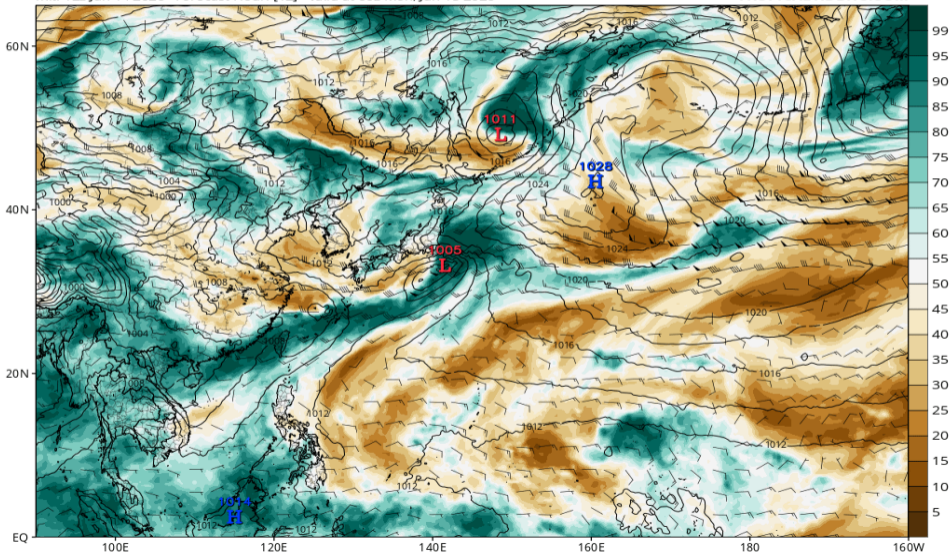


RH700-300 (GFS 06/15 00Z 予報)

GFS MSLP (mb), 700-300 hPa Relative Humidity (%), and 700-300 hPa Wind (kt)

Init: 12z Jun 14 2026 Forecast Hour: [12] valid at 00z Mon, Jun 15 2026

TROPICALTIDBITS.COM

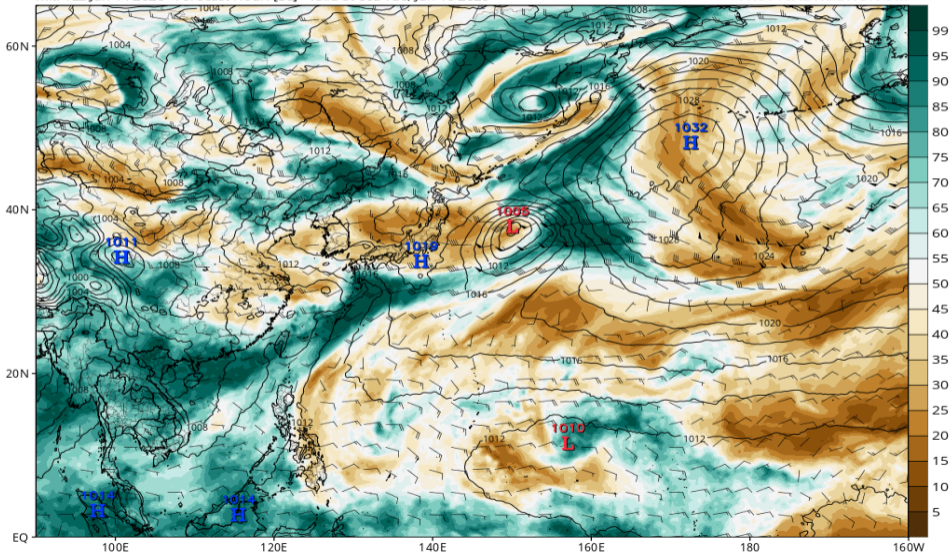


RH700-300 (GFS 06/16 00Z 予報)

GFS MSLP (mb), 700-300 hPa Relative Humidity (%), and 700-300 hPa Wind (kt)

Init: 12z Jun 14 2026 Forecast Hour: [36] valid at 00z Tue, Jun 16 2026

TROPICALTIDBITS.COM

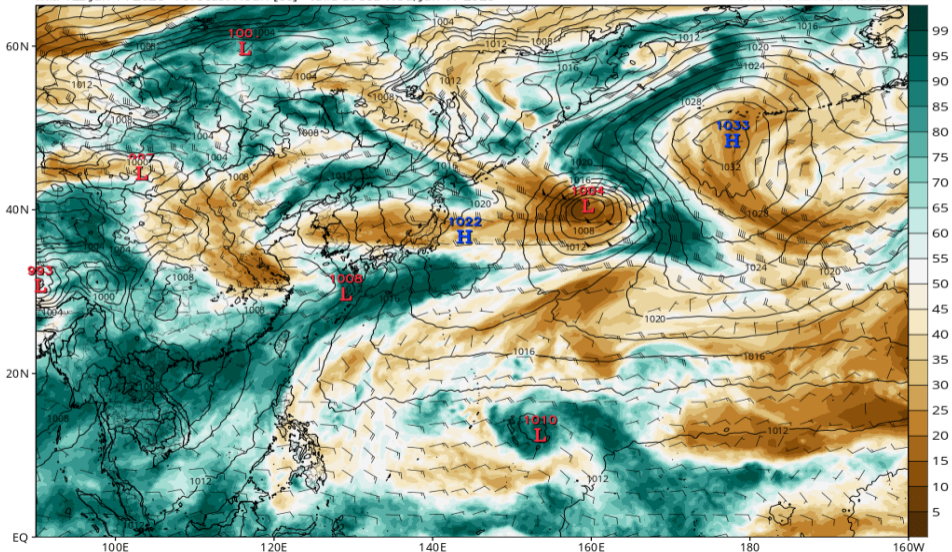


RH700-300 (GFS 06/17 00Z 予報)

GFS MSLP (mb), 700-300 hPa Relative Humidity (%), and 700-300 hPa Wind (kt)

Init: 12z Jun 14 2026 Forecast Hour: [60] valid at 00z Wed, Jun 17 2026

TROPICALTIDBITS.COM

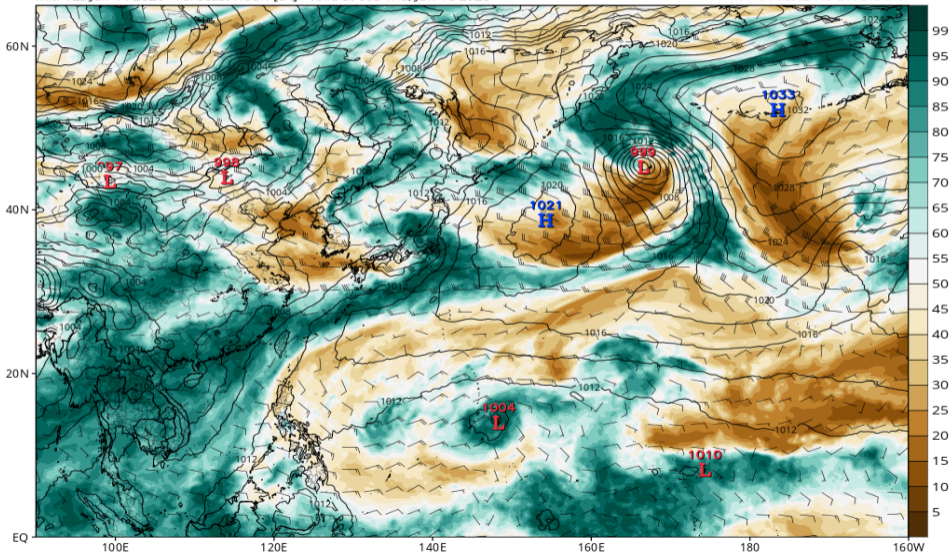


RH700-300 (GFS 06/18 00Z 予報)

GFS MSLP (mb), 700-300 hPa Relative Humidity (%), and 700-300 hPa Wind (kt)

Init: 12z Jun 14 2026 Forecast Hour: [84] valid at 00z Thu, Jun 18 2026

TROPICALTIDBITS.COM

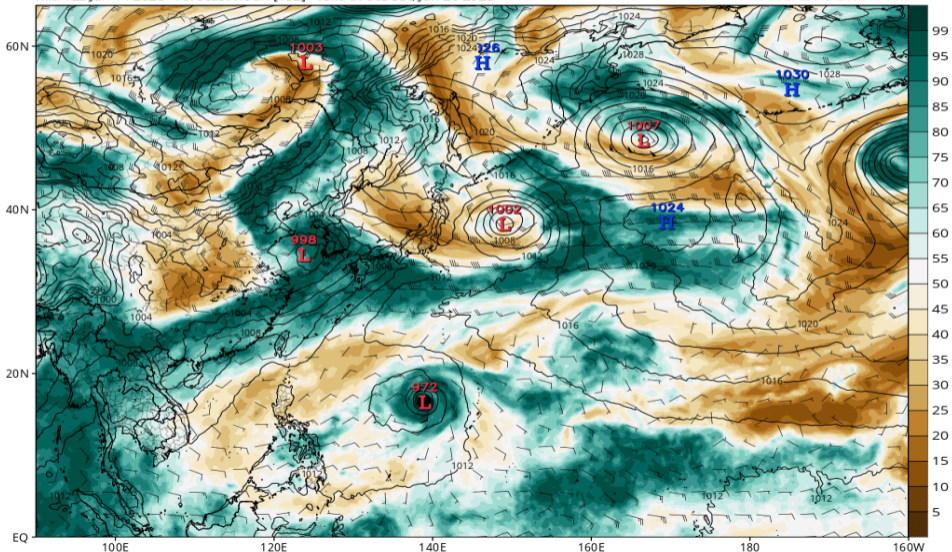


RH700-300 (GFS 06/20 00Z 予報)

GFS MSLP (mb), 700-300 hPa Relative Humidity (%), and 700-300 hPa Wind (kt)

Init: 12z Jun 14 2026 Forecast Hour: [132] valid at 00z Sat, Jun 20 2026

TROPICALTIDBITS.COM

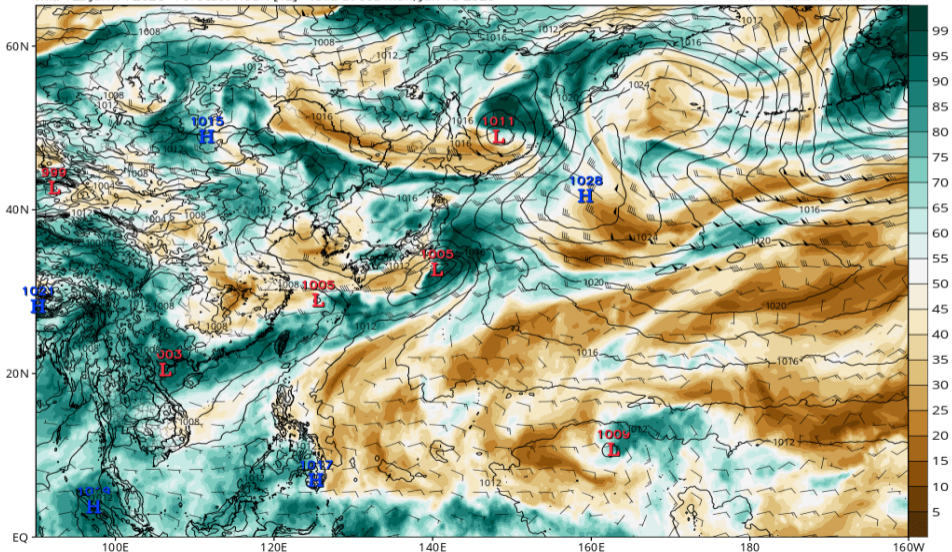


RH700-300 (ECMWF 06/15 00Z 予報)

ECMWF MSLP (mb), 700-300 hPa Relative Humidity (%), and 700-300 hPa Wind (kt)

Init: 12z Jun 14 2026 Forecast Hour: [12] valid at 00z Mon, Jun 15 2026

TROPICALTIDBITS.COM

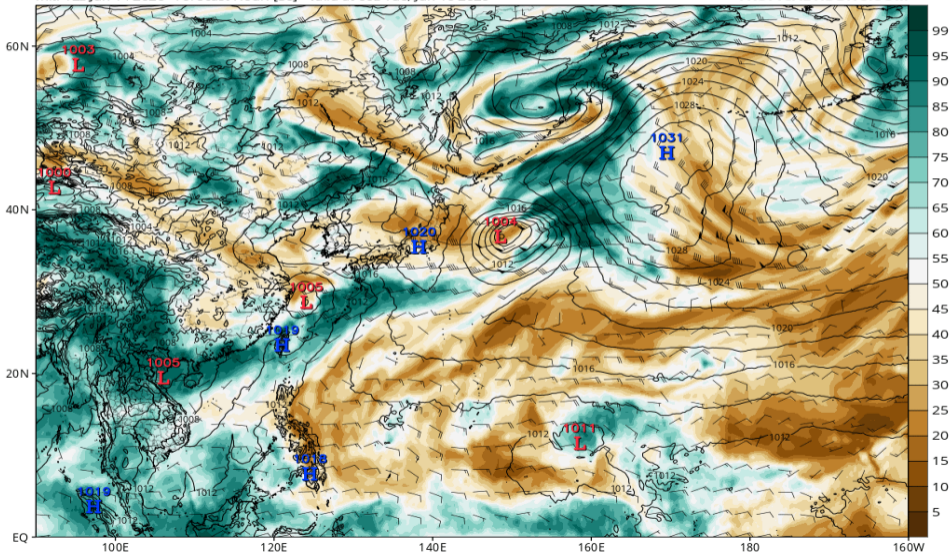


RH700-300 (ECMWF 06/16 00Z 予報)

ECMWF MSLP (mb), 700-300 hPa Relative Humidity (%), and 700-300 hPa Wind (kt)

Init: 12z Jun 14 2026 Forecast Hour: [36] valid at 00z Tue, Jun 16 2026

TROPICALTIDBITS.COM

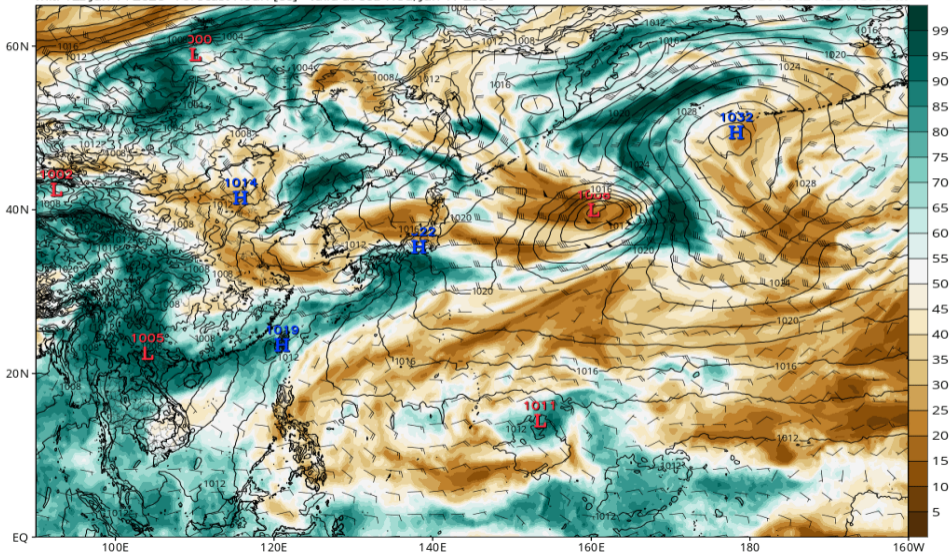


RH700-300 (ECMWF 06/17 00Z 予報)

ECMWF MSLP (mb), 700-300 hPa Relative Humidity (%), and 700-300 hPa Wind (kt)

Init: 12z Jun 14 2026 Forecast Hour: [60] valid at 00z Wed, Jun 17 2026

TROPICALTIDBITS.COM

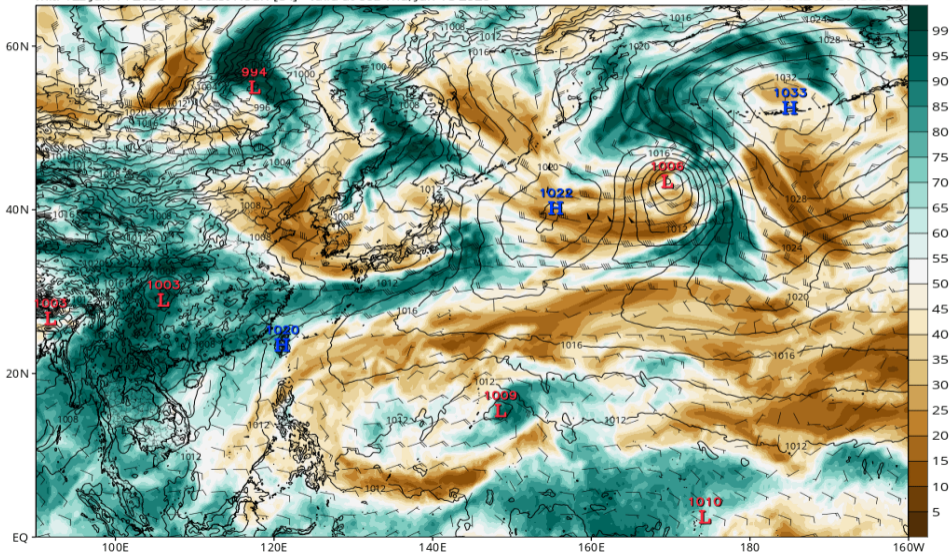


RH700-300 (ECMWF 06/18 00Z 予報)

ECMWF MSLP (mb), 700-300 hPa Relative Humidity (%), and 700-300 hPa Wind (kt)

Init: 12z Jun 14 2026 Forecast Hour: [84] valid at 00z Thu, Jun 18 2026

TROPICALTIDBITS.COM

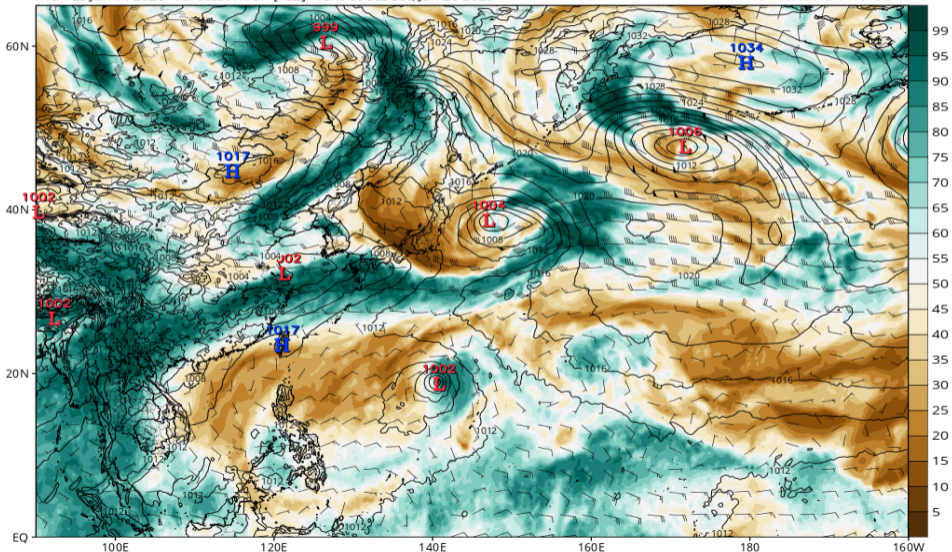


RH700-300 (ECMWF 06/20 00Z 予報)

ECMWF MSLP (mb), 700-300 hPa Relative Humidity (%), and 700-300 hPa Wind (kt)

Init: 12z Jun 14 2026 Forecast Hour: [132] valid at 00z Sat, Jun 20 2026

TROPICALTIDBITS.COM

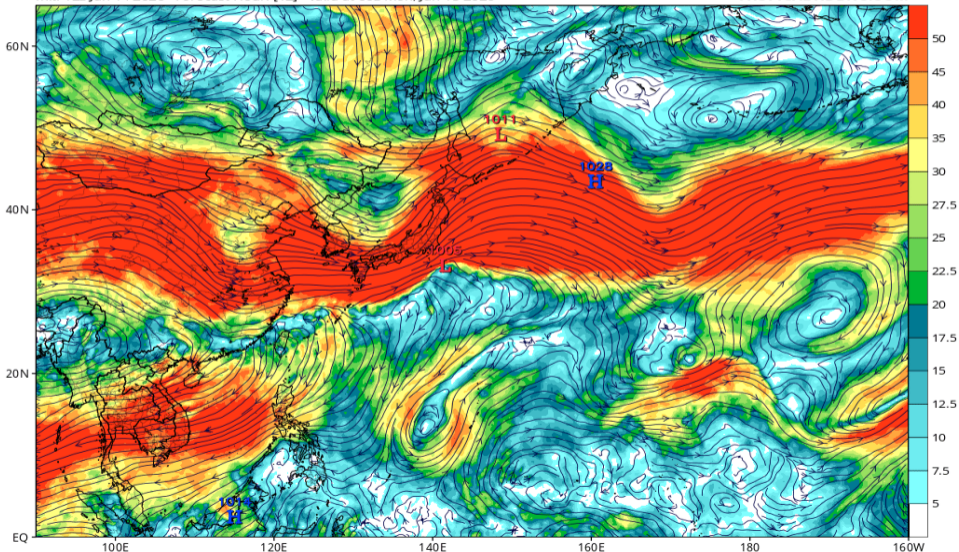


Wshear850-200 (GFS 06/15 00Z 予報)

GFS 200mb-850mb Wind Shear (knots) & Low Centers (mb)

Init: 12z Jun 14 2026 Forecast Hour: [12] valid at 00z Mon, Jun 15 2026

TROPICALTIDBITS.COM

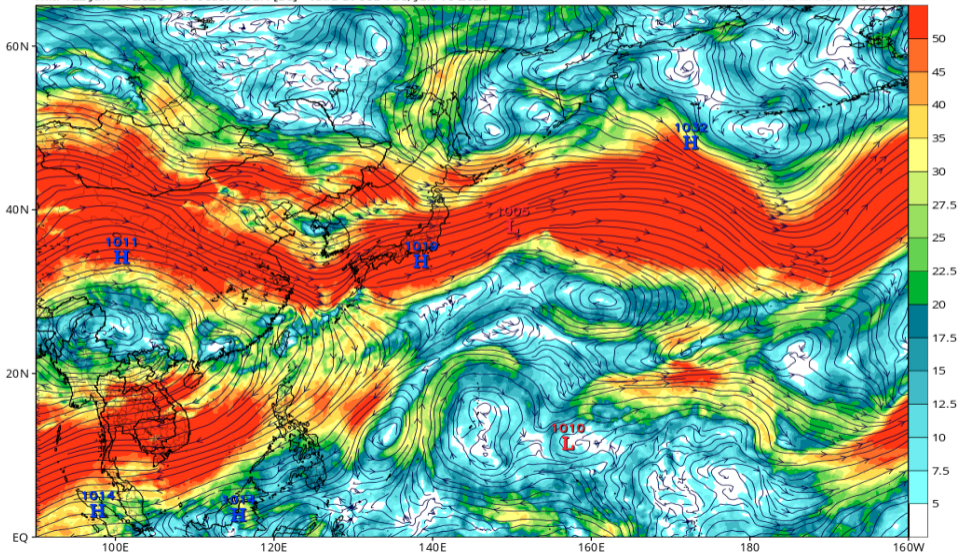


Wshear850-200 (GFS 06/16 00Z 予報)

GFS 200mb-850mb Wind Shear (knots) & Low Centers (mb)

Init: 12z Jun 14 2026 Forecast Hour: [36] valid at 00z Tue, Jun 16 2026

TROPICALTIDBITS.COM

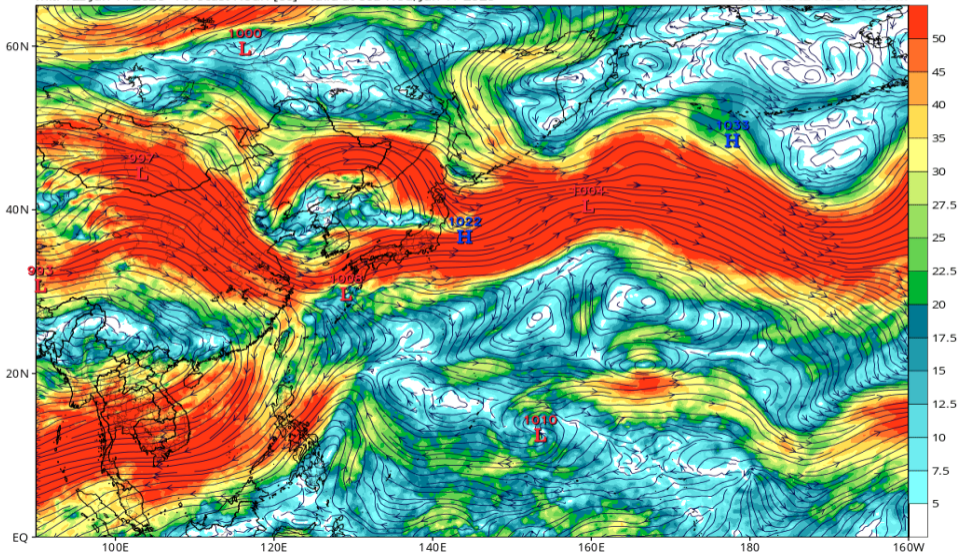


Wshear850-200 (GFS 06/17 00Z 予報)

GFS 200mb-850mb Wind Shear (knots) & Low Centers (mb)

Init: 12z Jun 14 2026 Forecast Hour: [60] valid at 00z Wed, Jun 17 2026

TROPICALTIDBITS.COM

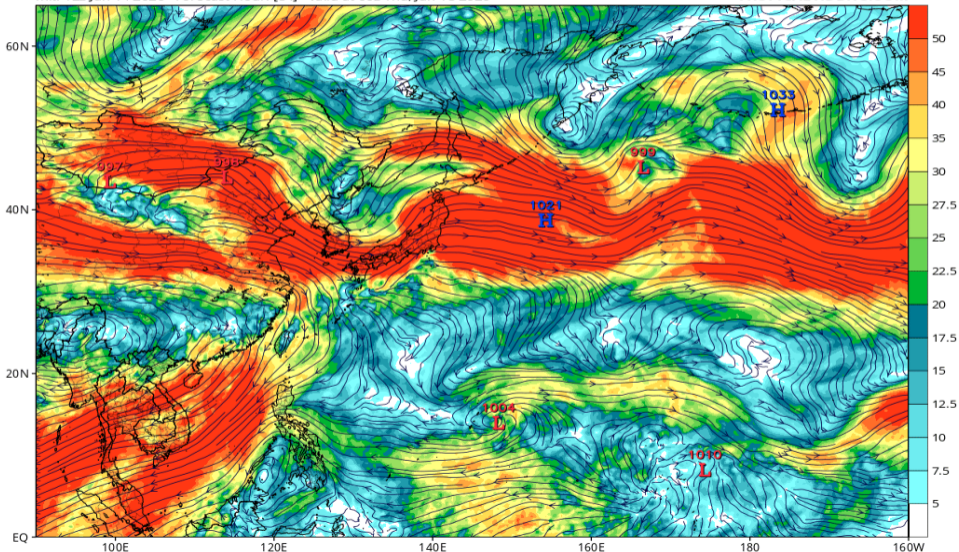


Wshear850-200 (GFS 06/18 00Z 予報)

GFS 200mb-850mb Wind Shear (knots) & Low Centers (mb)

Init: 12z Jun 14 2026 Forecast Hour: [84] valid at 00z Thu, Jun 18 2026

TROPICALTIDBITS.COM

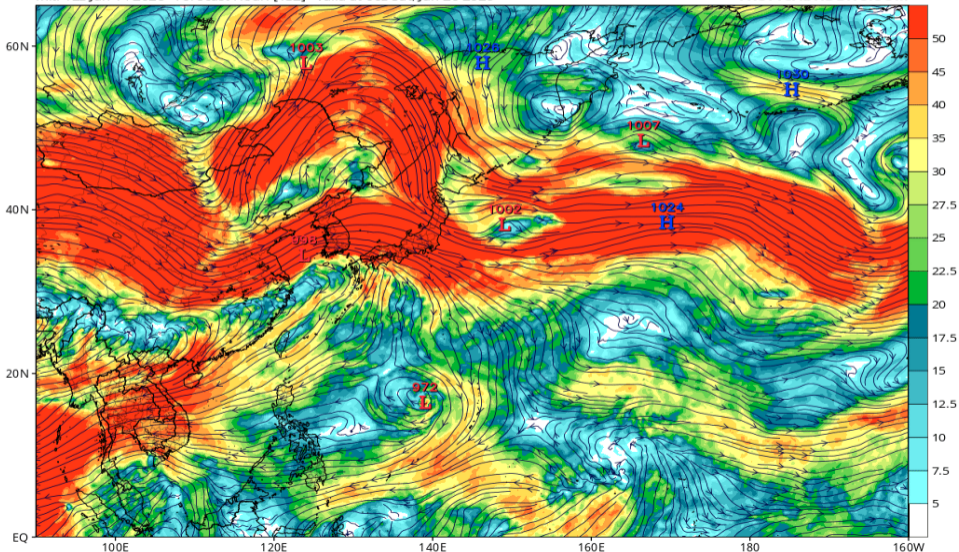


Wshear850-200 (GFS 06/20 00Z 予報)

GFS 200mb-850mb Wind Shear (knots) & Low Centers (mb)

Init: 12z Jun 14 2026 Forecast Hour: [132] valid at 00z Sat, Jun 20 2026

TROPICALTIDBITS.COM

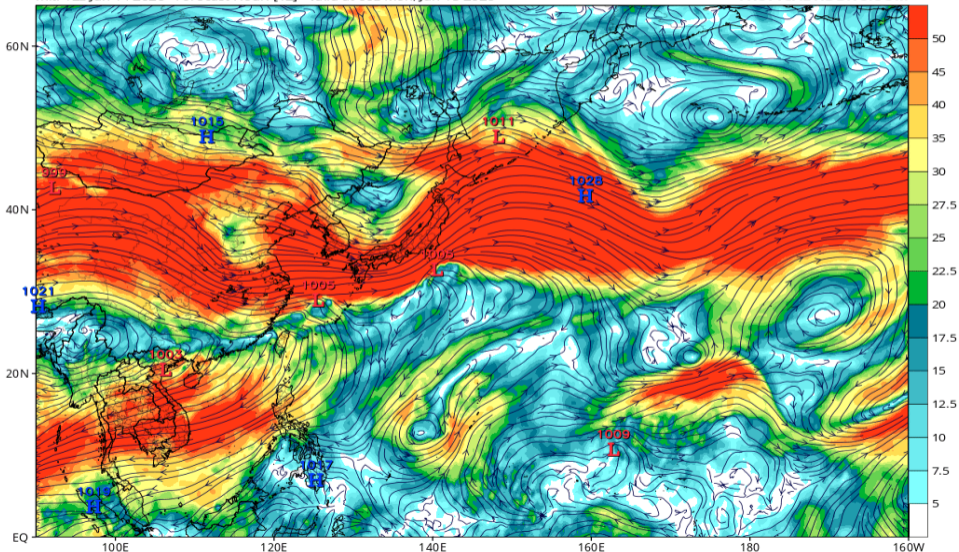


Wshear850-200 (ECMWF 06/15 00Z 予報)

ECMWF 200mb-850mb Wind Shear (knots) & Low Centers (mb)

Init: 12z Jun 14 2026 Forecast Hour: [12] valid at 00z Mon, Jun 15 2026

TROPICALTIDBITS.COM

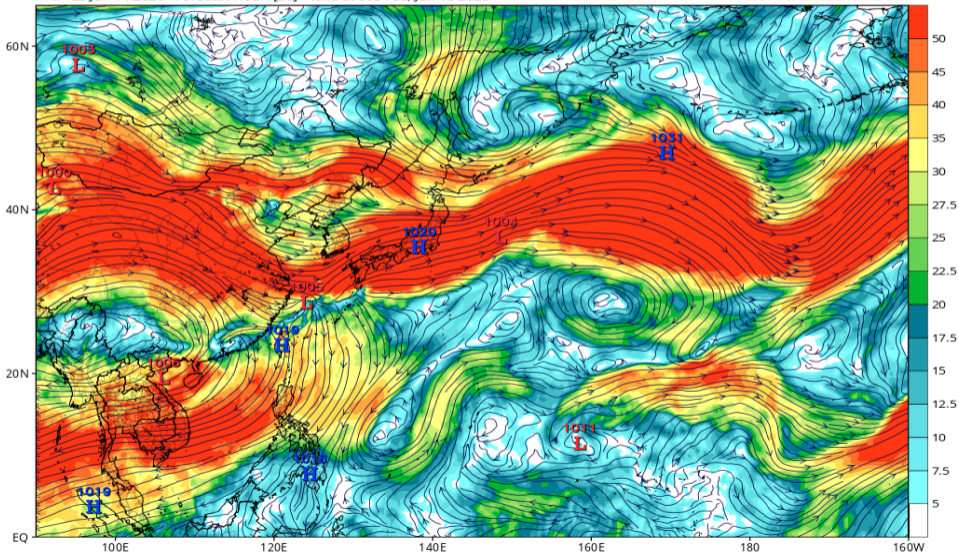


Wshear850-200 (ECMWF 06/16 00Z 予報)

ECMWF 200mb-850mb Wind Shear (knots) & Low Centers (mb)

Init: 12z Jun 14 2026 Forecast Hour: [36] valid at 00z Tue, Jun 16 2026

TROPICALTIDBITS.COM

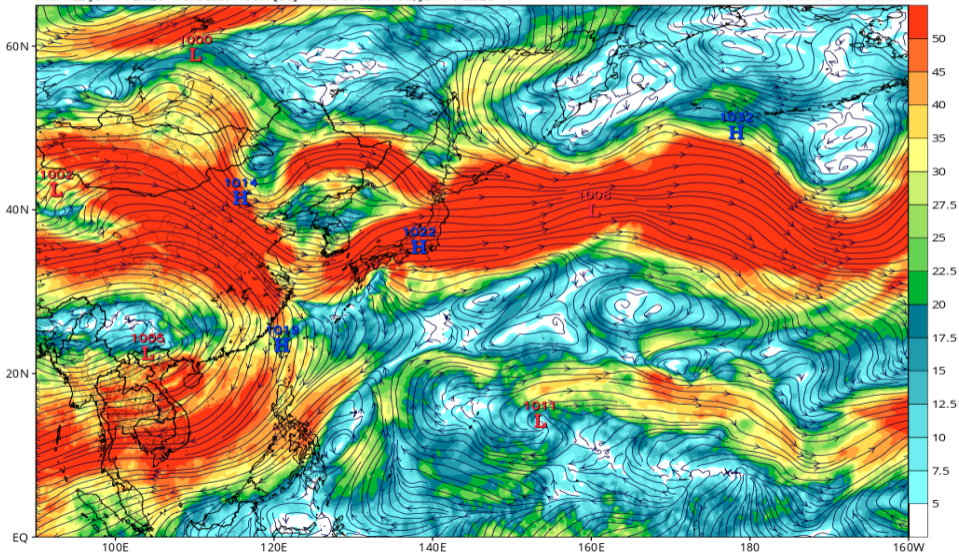


Wshear850-200 (ECMWF 06/17 00Z 予報)

ECMWF 200mb-850mb Wind Shear (knots) & Low Centers (mb)

Init: 12z Jun 14 2026 Forecast Hour: [60] valid at 00z Wed, Jun 17 2026

TROPICALTIDBITS.COM

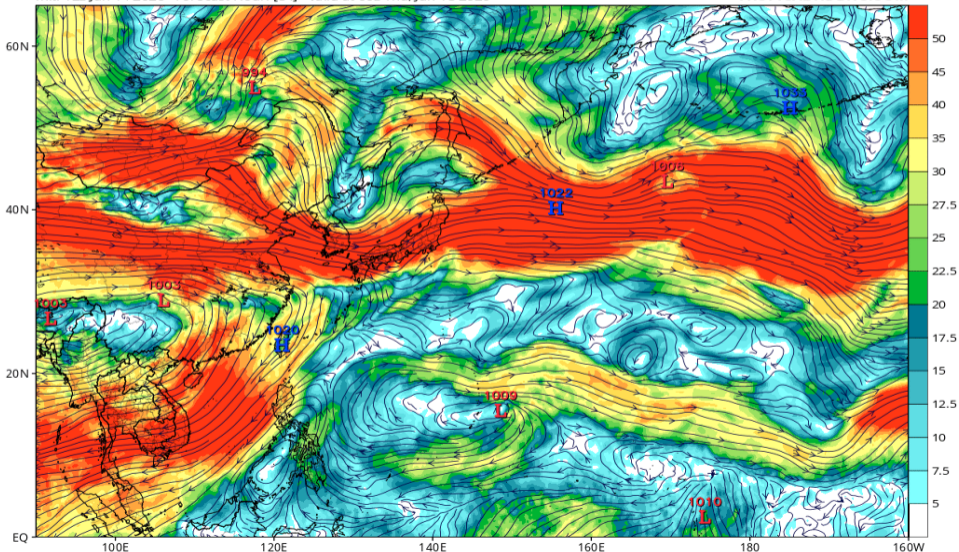


Wshear850-200 (ECMWF 06/18 00Z 予報)

ECMWF 200mb-850mb Wind Shear (knots) & Low Centers (mb)

Init: 12z Jun 14 2026 Forecast Hour: [84] valid at 00z Thu, Jun 18 2026

TROPICALTIDBITS.COM

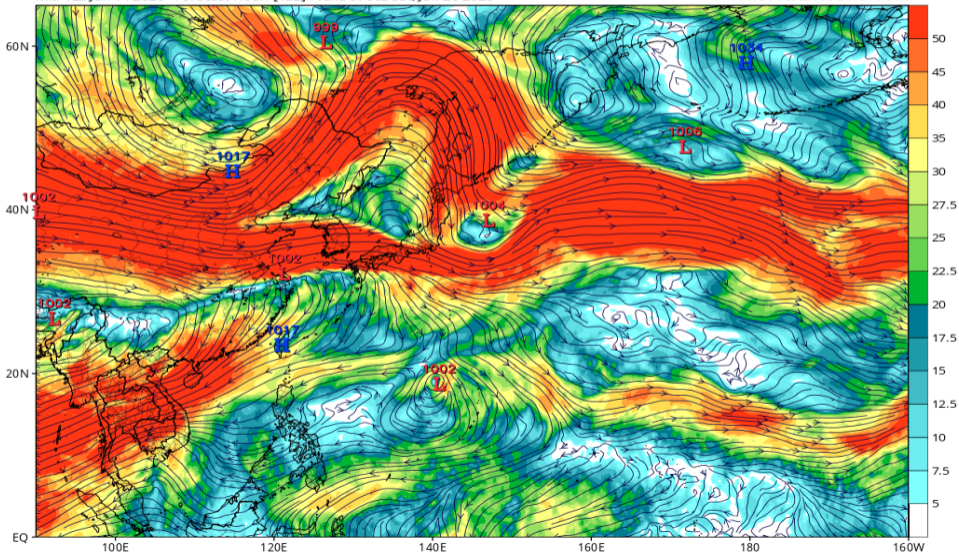


Wshear850-200 (ECMWF 06/20 00Z 予報)

ECMWF 200mb-850mb Wind Shear (knots) & Low Centers (mb)

Init: 12z Jun 14 2026 Forecast Hour: [132] valid at 00z Sat, Jun 20 2026

TROPICALTIDBITS.COM

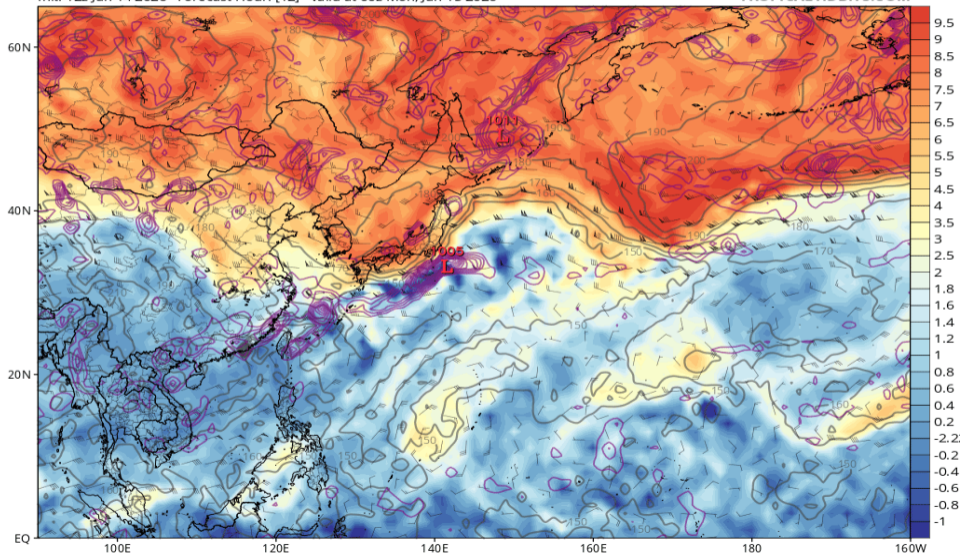


渦位 355K (GFS 06/15 00Z 予報)

GFS 355K Cyclonic PV (PVU), Wind (kt), Pressure (hPa, gray), & 850 hPa Cyclonic Vorticity (purple) [1.0°x1.0° grid]

Init: 12z Jun 14 2026 Forecast Hour: [12] valid at 00z Mon, Jun 15 2026

TROPICALTIDBITS.COM

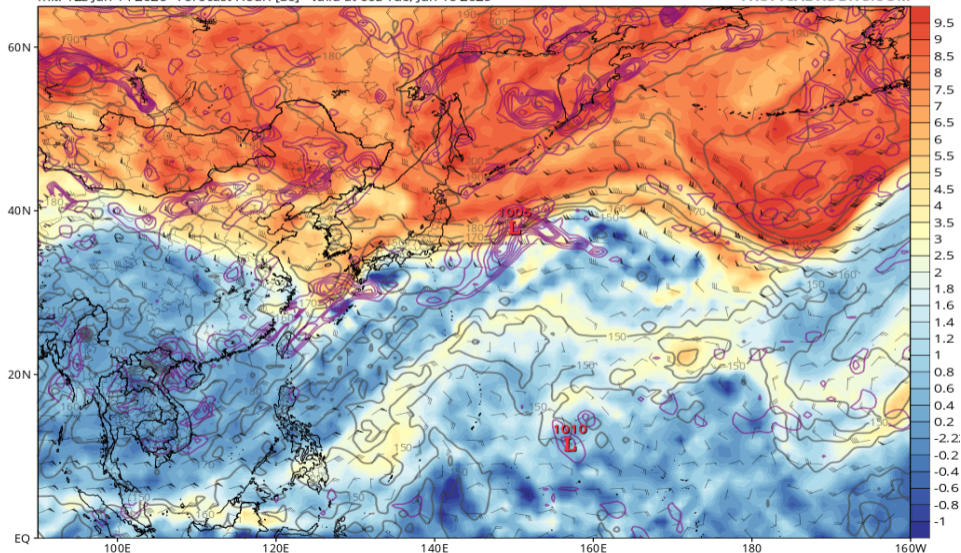


渦位 355K (GFS 06/16 00Z 予報)

GFS 355K Cyclonic PV (PVU), Wind (kt), Pressure (hPa, gray), & 850 hPa Cyclonic Vorticity (purple) [1.0°x1.0° grid]

Init: 12z Jun 14 2026 Forecast Hour: [36] valid at 00z Tue, Jun 16 2026

TROPICALTIDBITS.COM

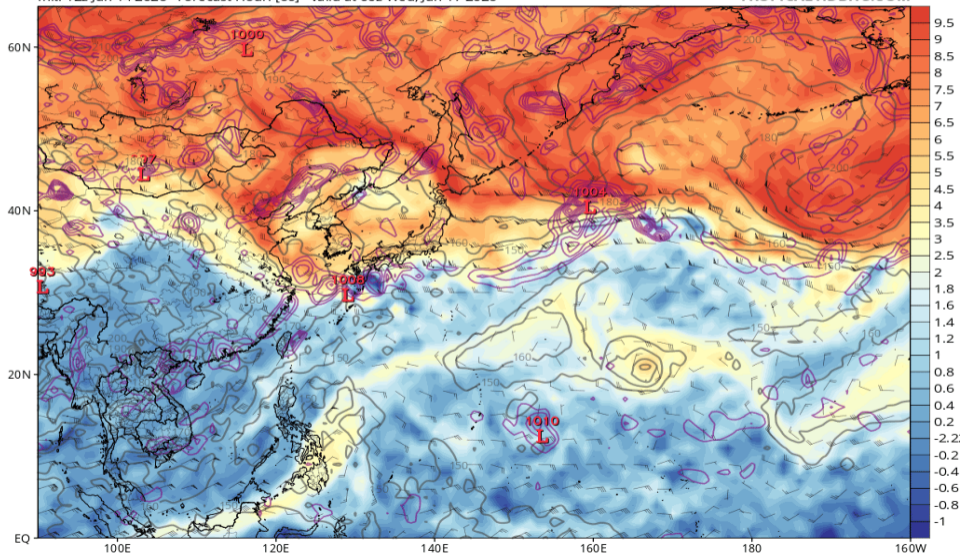


渦位 355K (GFS 06/17 00Z 予報)

GFS 355K Cyclonic PV (PVU), Wind (kt), Pressure (hPa, gray), & 850 hPa Cyclonic Vorticity (purple) [1.0°x1.0° grid]

Init: 12z Jun 14 2026 Forecast Hour: [60] valid at 00z Wed, Jun 17 2026

TROPICALTIDBITS.COM

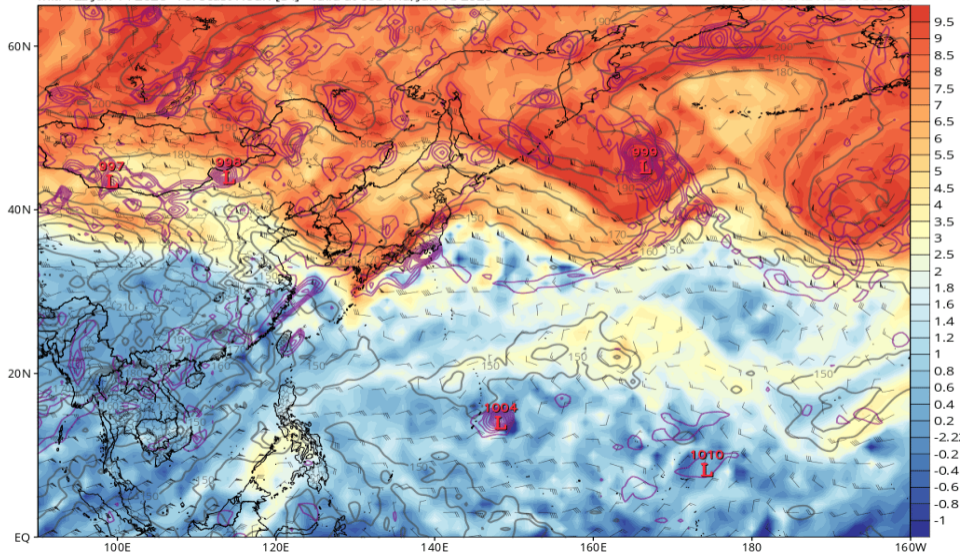


渦位 355K (GFS 06/18 00Z 予報)

GFS 355K Cyclonic PV (PVU), Wind (kt), Pressure (hPa, gray), & 850 hPa Cyclonic Vorticity (purple) [1.0°x1.0° grid]

Init: 12z Jun 14 2026 Forecast Hour: [84] valid at 00z Thu, Jun 18 2026

TROPICALTIDBITS.COM

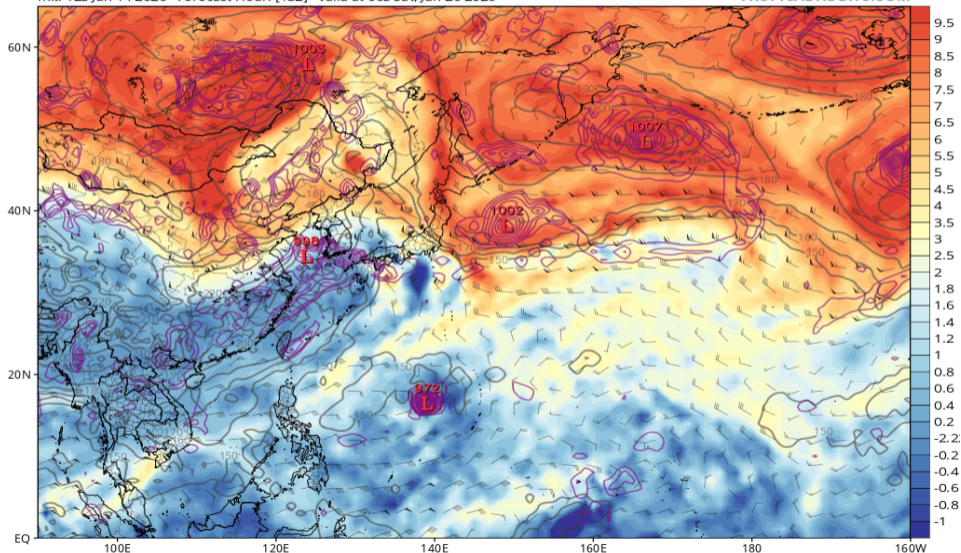


渦位 355K (GFS 06/20 00Z 予報)

GFS 355K Cyclonic PV (PVU), Wind (kt), Pressure (hPa, gray), & 850 hPa Cyclonic Vorticity (purple) [1.0°x1.0° grid]

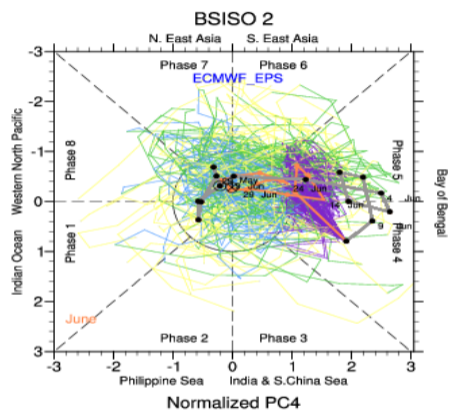
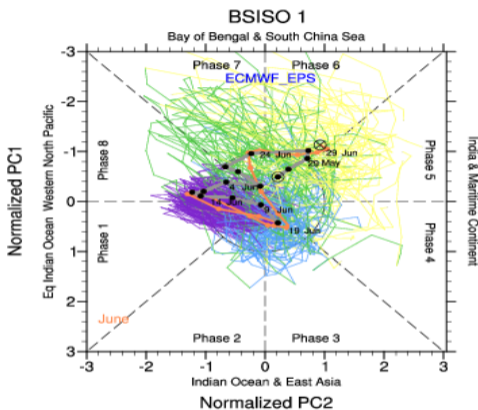
Init: 12z Jun 14 2026 Forecast Hour: [132] valid at 00z Sat, Jun 20 2026

TROPICALTIDBITS.COM



BSISO 予測 (ECMWFens 06/11 初期)

BSISO Forecast for 11-June-2026 to 30-June-2026



Re-analysis

Ensemble Mean

0-4d

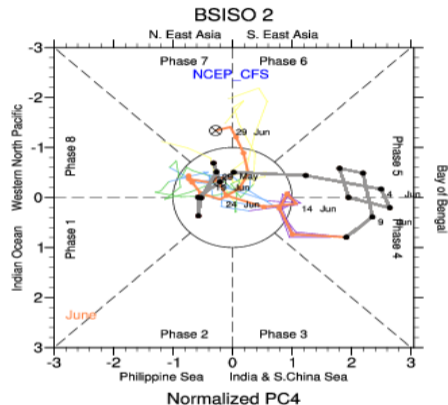
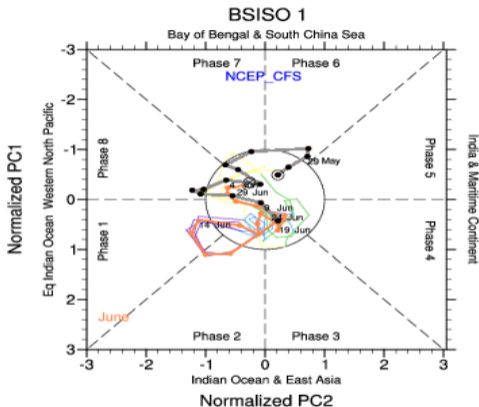
5-9d

10-14d

15-19d

BSISO 予測 (NCEPCFSens 06/11 初期)

BSISO Forecast for 11-June-2026 to 30-June-2026



Re-analysis

0-4d

5-9d

Ensemble Mean

10-14d

15-19d