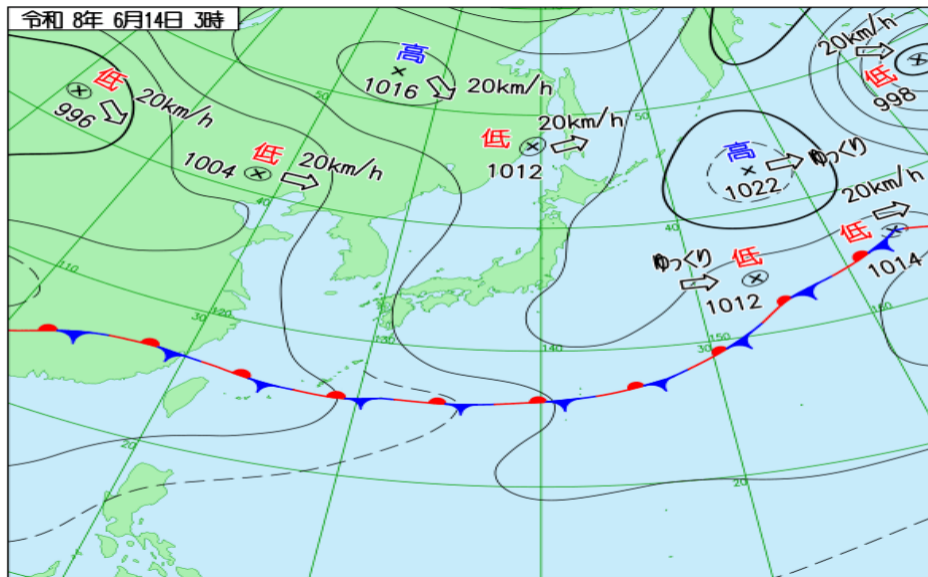
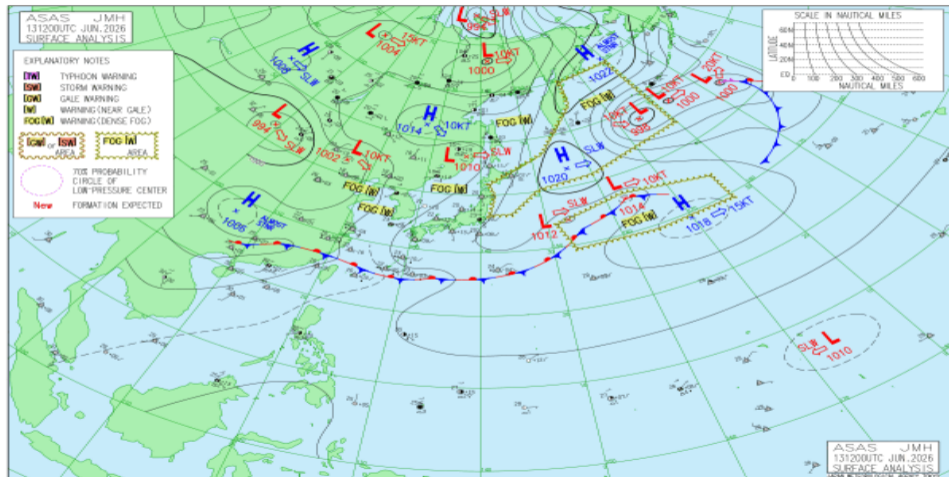


# JMA 日本域実況天気図 06/13 18Z

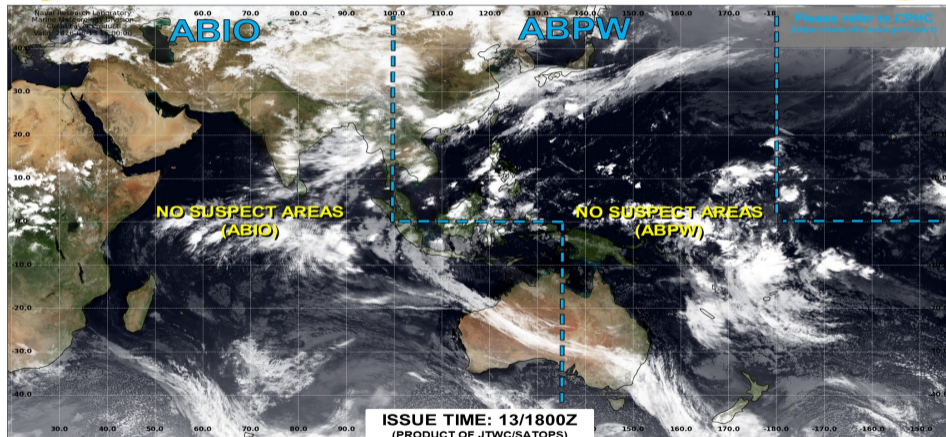


# JMA アジア太平洋域実況天気図 06/13 12Z





## JOINT TYPHOON WARNING CENTER



TC development unlikely within 24 hours



TC development likely, but expected to occur beyond 24 hours



TC development likely within 24 hours (Reference TCFA)

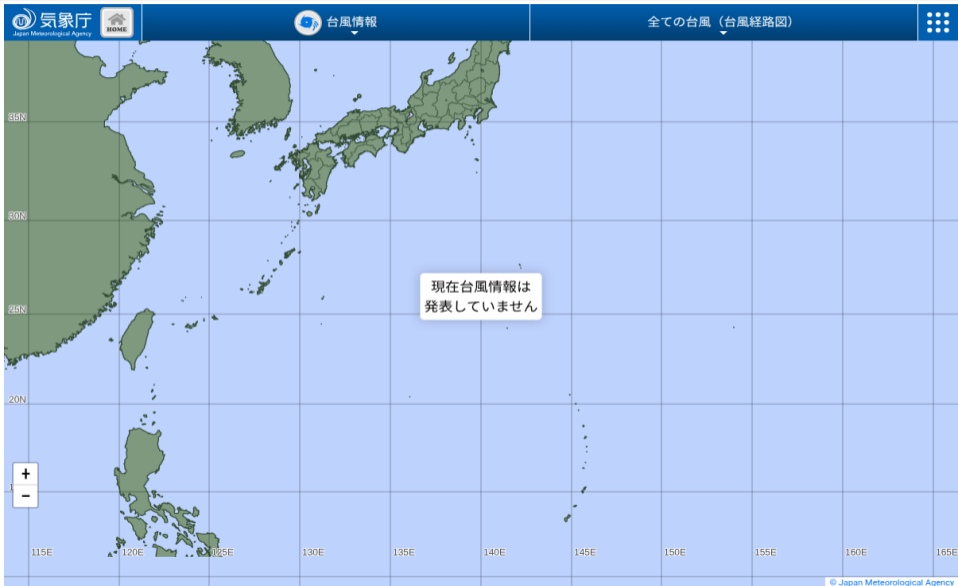


Monitoring for potential transition to TC. Invest label color denotes tropical transition probability

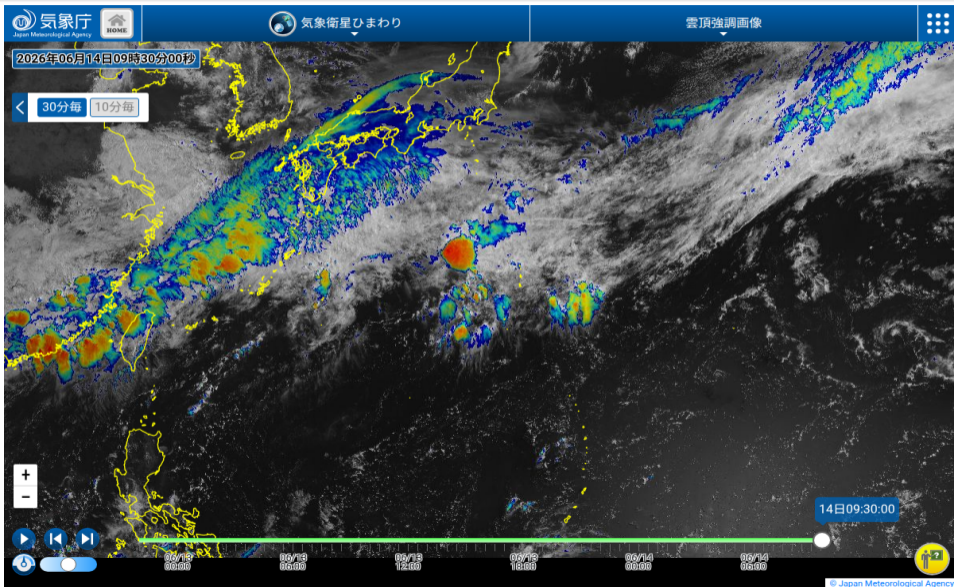


Tropical Cyclone (Reference Warning)

# JMA 台風実況

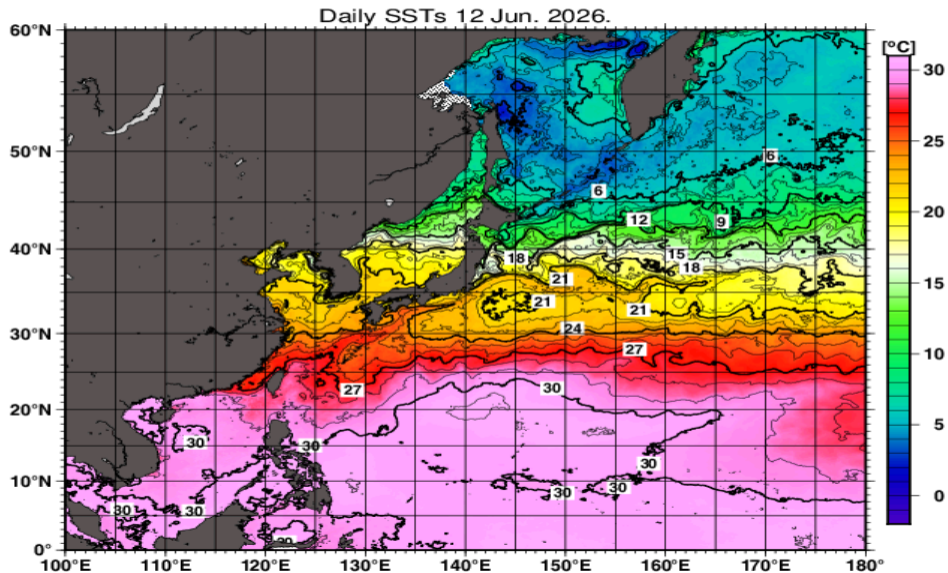


# ひまわり雲頂強調

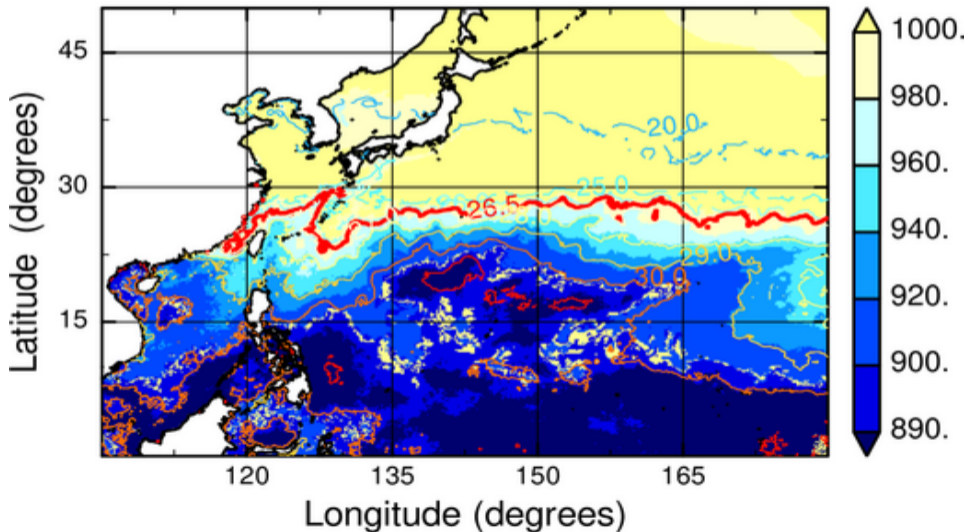


No Figure

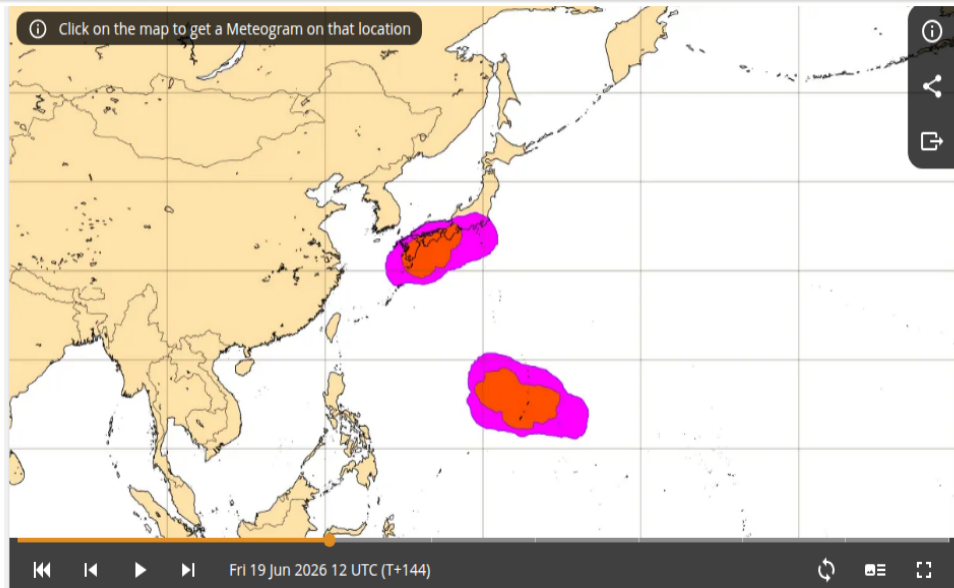
# JMA 海面水温解析



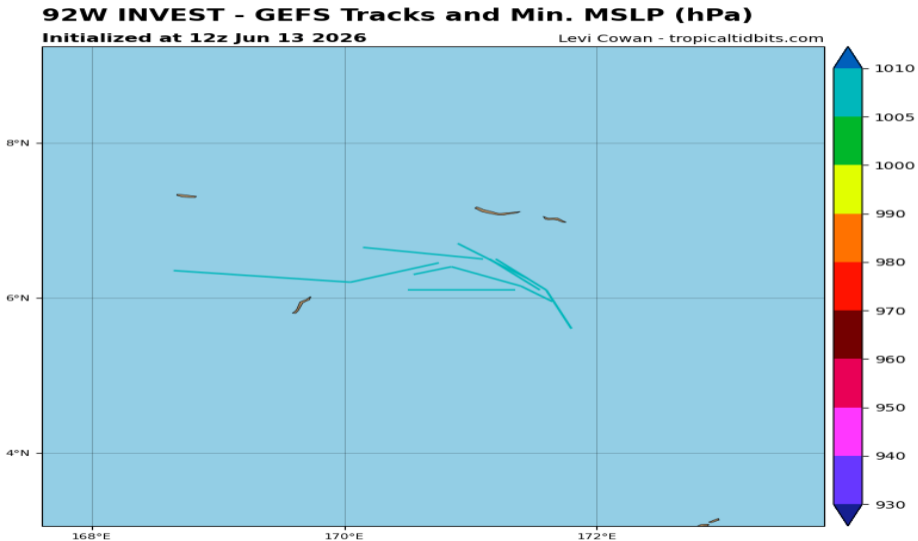
MPI<sub>BE</sub>, JMAGSM+HIMSST (mb) (00:00:00Z12Jun2026)



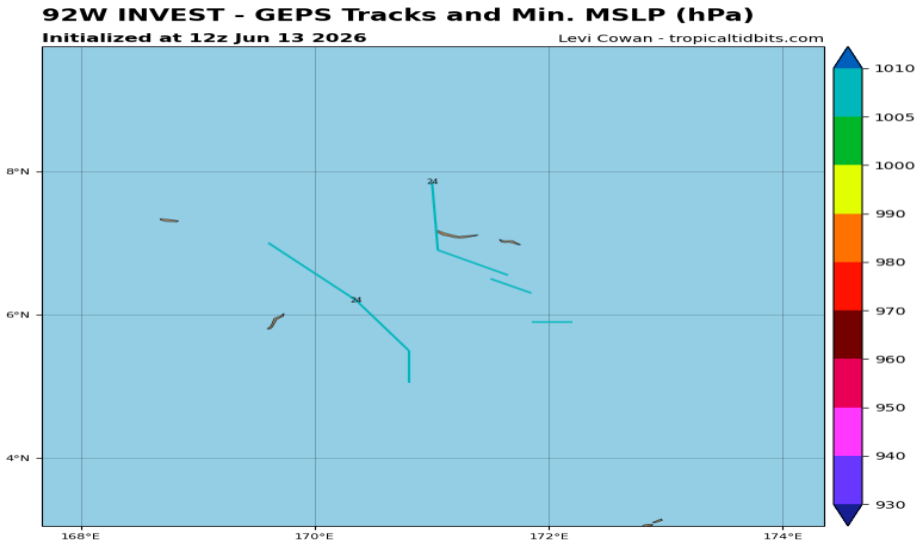
# ECMWF TC genesis 06/19 12Z (6 日先) 予報



# 92W GEFS (06/13 12Z 初期値)



# 92W GEPS (06/13 12Z 初期値)

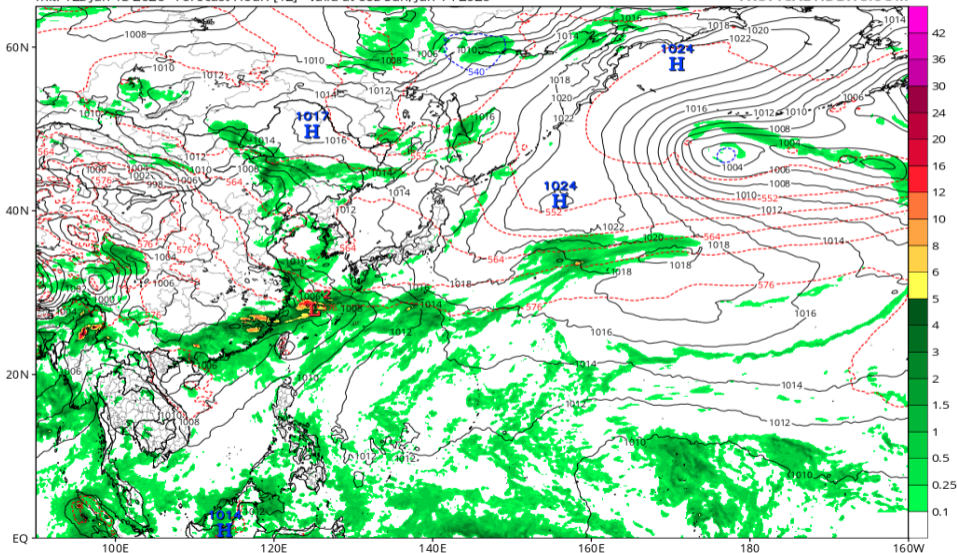


# 地上気圧配置 (GFS 06/14 00Z 予報)

GFS 6-hour Averaged Precip Rate (mm/hr), MSLP (hPa) & 1000-500mb Thickness (dam)

Init: 12z Jun 13 2026 Forecast Hour: [12] valid at 00z Sun, Jun 14 2026

TROPICALTIDBITS.COM

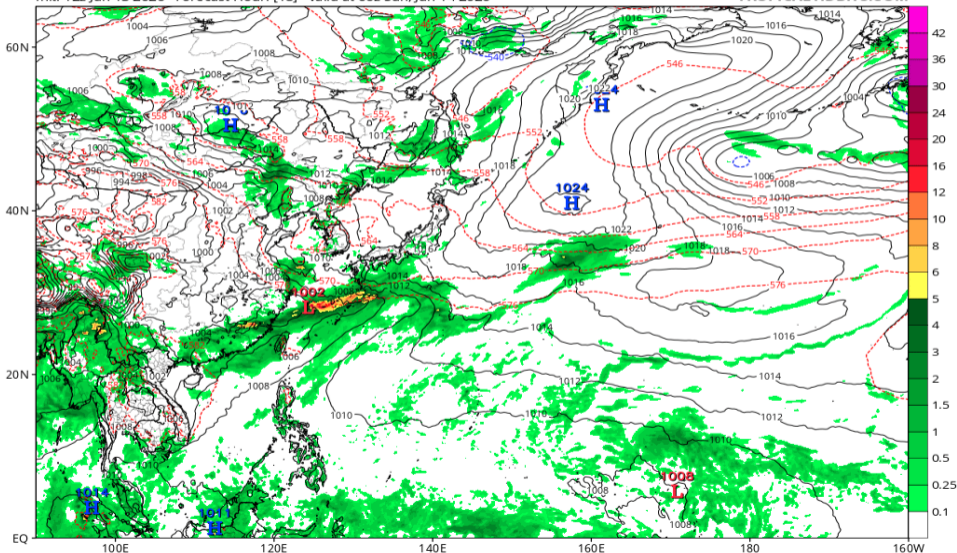


# 地上気圧配置 (GFS 06/14 06Z 予報)

GFS 6-hour Averaged Precip Rate (mm/hr), MSLP (hPa) & 1000-500mb Thickness (dam)

Init: 12z Jun 13 2026 Forecast Hour: [18] valid at 06z Sun, Jun 14 2026

TROPICALTIDBITS.COM

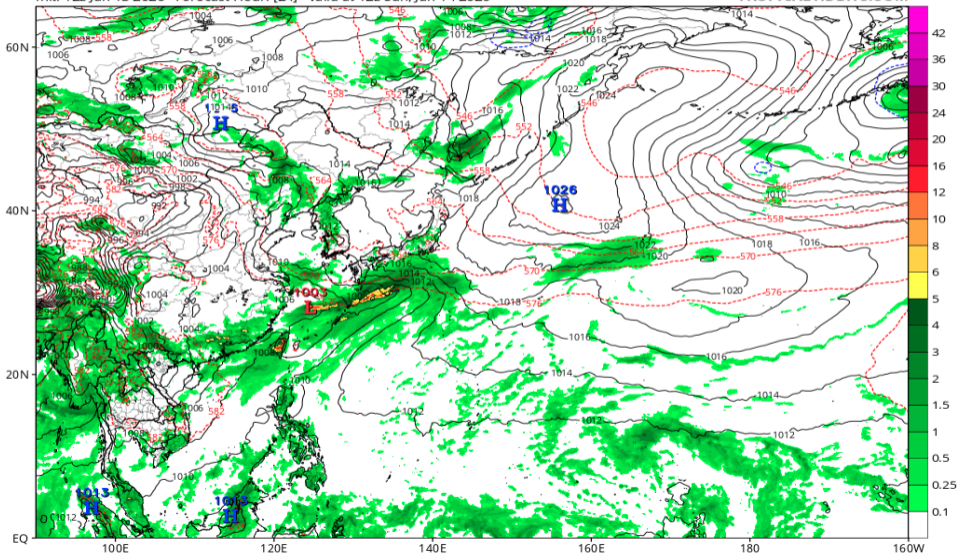


# 地上気圧配置 (GFS 06/14 12Z 予報)

GFS 6-hour Averaged Precip Rate (mm/hr), MSLP (hPa) & 1000-500mb Thickness (dam)

Init: 12z Jun 13 2026 Forecast Hour: [24] valid at 12z Sun, Jun 14 2026

TROPICALTIDBITS.COM

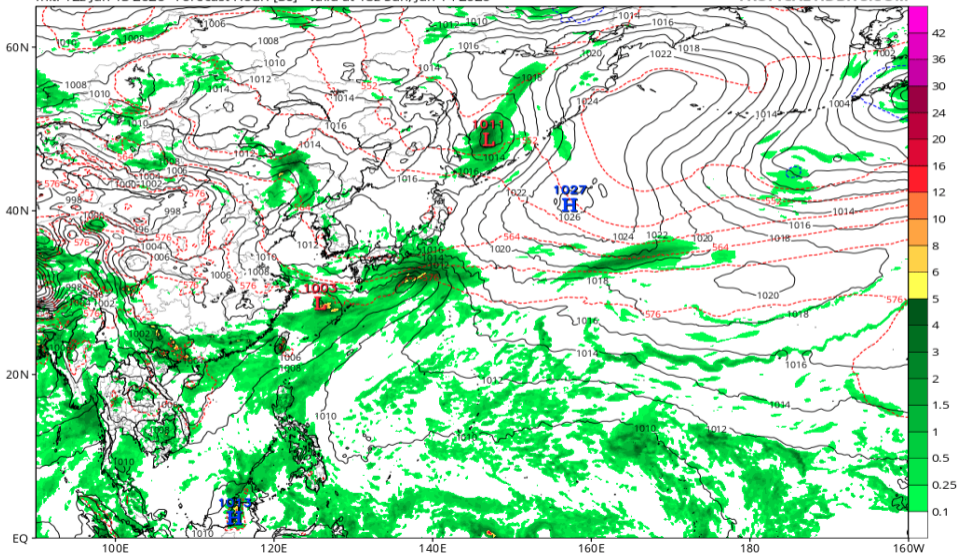


# 地上気圧配置 (GFS 06/14 18Z 予報)

GFS 6-hour Averaged Precip Rate (mm/hr), MSLP (hPa) & 1000-500mb Thickness (dam)

Init: 12z Jun 13 2026 Forecast Hour: [30] valid at 18z Sun, Jun 14 2026

TROPICALTIDBITS.COM

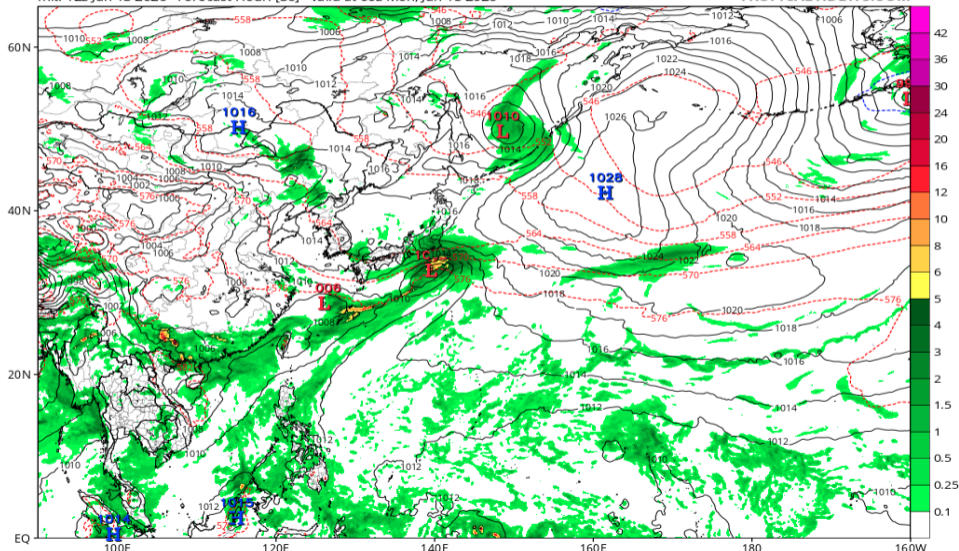


# 地上気圧配置 (GFS 06/15 00Z 予報)

GFS 6-hour Averaged Precip Rate (mm/hr), MSLP (hPa) & 1000-500mb Thickness (dam)

Init: 12z Jun 13 2026 Forecast Hour: [36] valid at 00z Mon, Jun 15 2026

TROPICALTIDBITS.COM

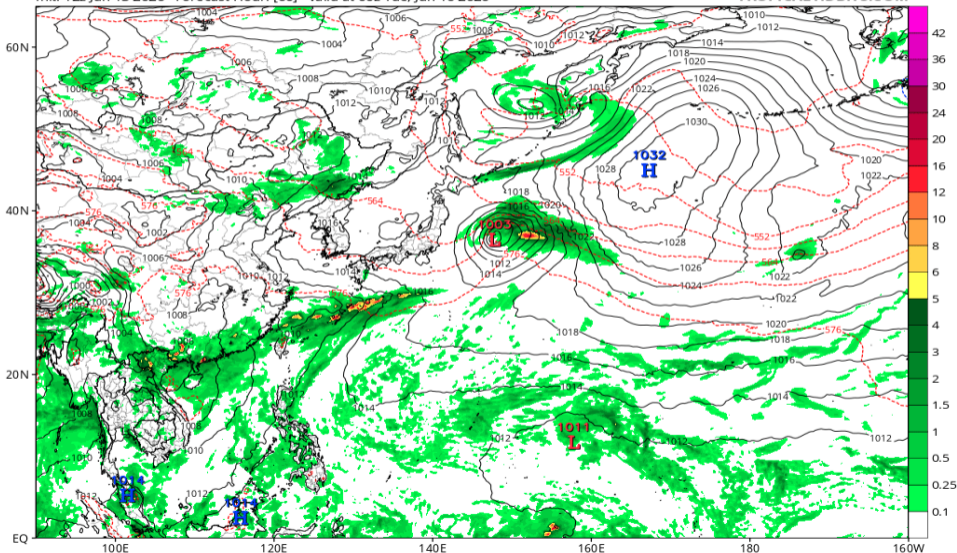


# 地上気圧配置 (GFS 06/16 00Z 予報)

GFS 6-hour Averaged Precip Rate (mm/hr), MSLP (hPa) & 1000-500mb Thickness (dam)

Init: 12z Jun 13 2026 Forecast Hour: [60] valid at 00z Tue, Jun 16 2026

TROPICALTIDBITS.COM

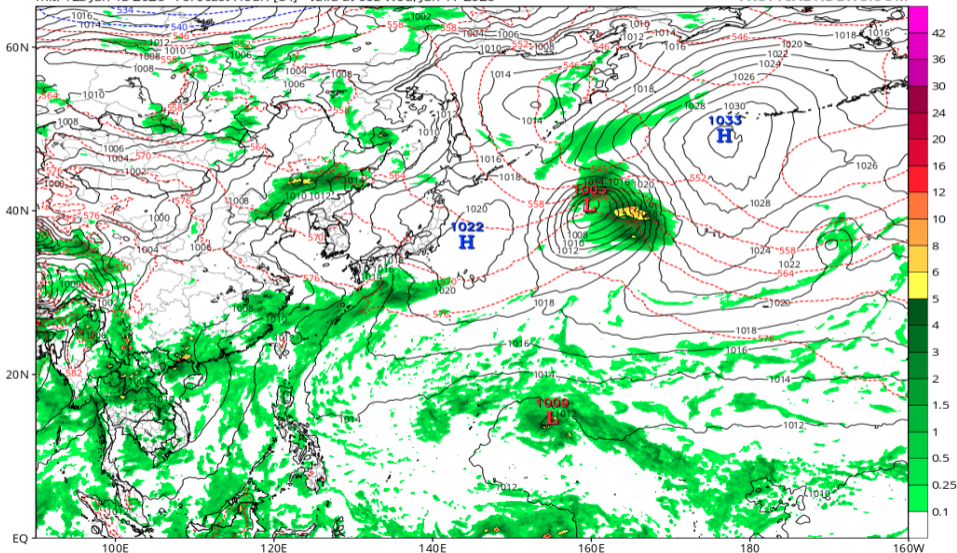


# 地上気圧配置 (GFS 06/17 00Z 予報)

GFS 6-hour Averaged Precip Rate (mm/hr), MSLP (hPa) & 1000-500mb Thickness (dam)

Init: 12z Jun 13 2026 Forecast Hour: [84] valid at 00z Wed, Jun 17 2026

TROPICALTIDBITS.COM

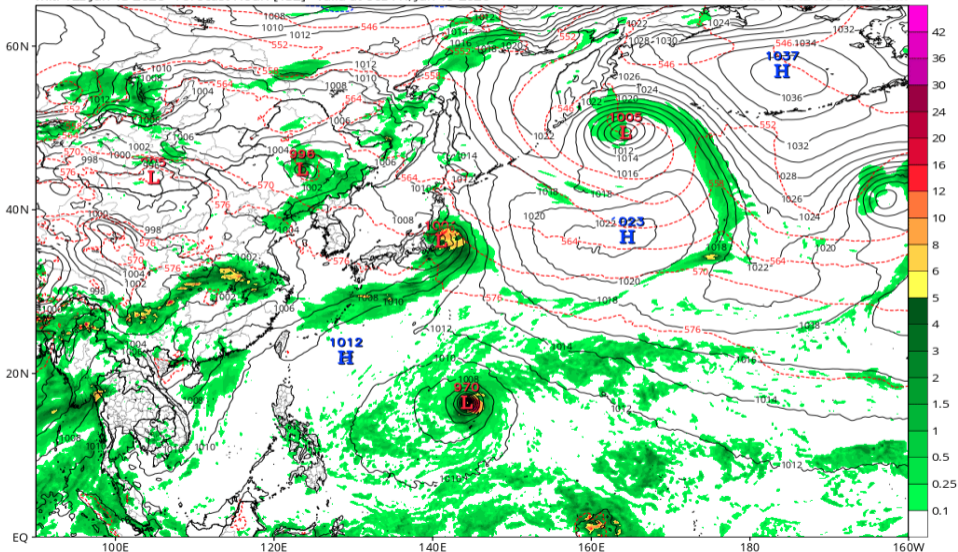


# 地上気圧配置 (GFS 06/19 00Z 予報)

GFS 6-hour Averaged Precip Rate (mm/hr), MSLP (hPa) & 1000-500mb Thickness (dam)

Init: 12z Jun 13 2026 Forecast Hour: [132] valid at 00z Fri, Jun 19 2026

TROPICALTIDBITS.COM

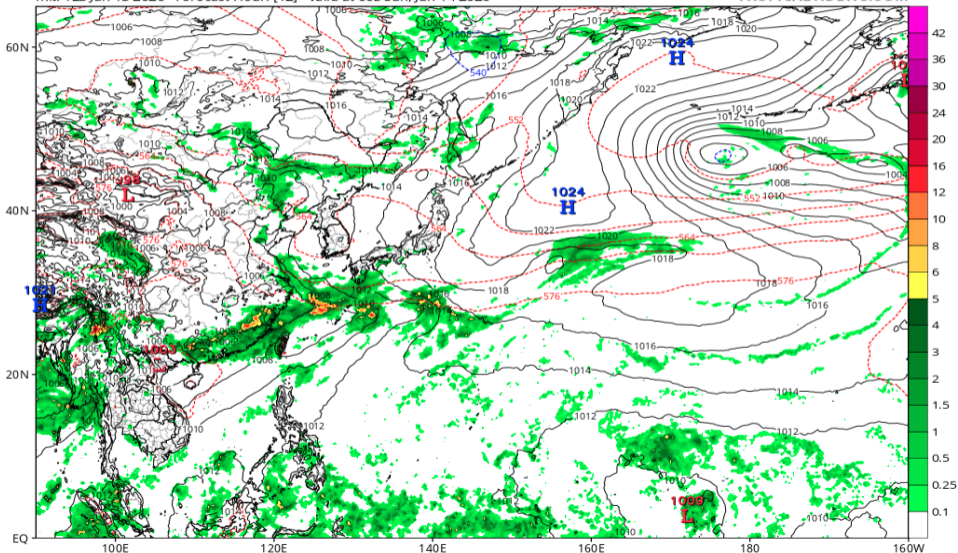


# 地上気圧配置 (ECMWF 06/14 00Z 予報)

ECMWF Instantaneous Precip Rate (mm/hr), MSLP (hPa) & 1000-500mb Thickness (dam)

Init: 12z Jun 13 2026 Forecast Hour: [12] valid at 00z Sun, Jun 14 2026

TROPICALTIDBITS.COM

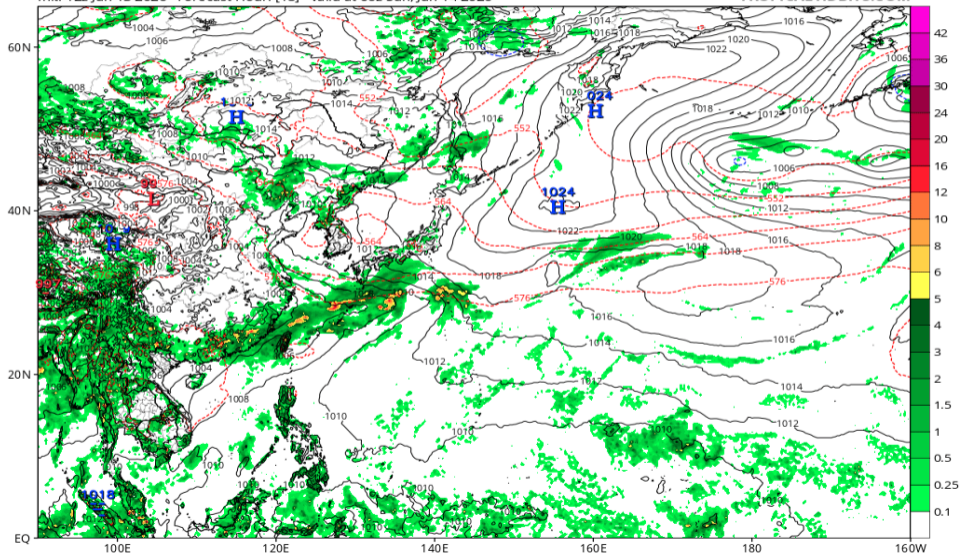


# 地上気圧配置 (ECMWF 06/14 06Z 予報)

ECMWF Instantaneous Precip Rate (mm/hr), MSLP (hPa) & 1000-500mb Thickness (dam)

Init: 12z Jun 13 2026 Forecast Hour: [18] valid at 06z Sun, Jun 14 2026

TROPICALTIDBITS.COM

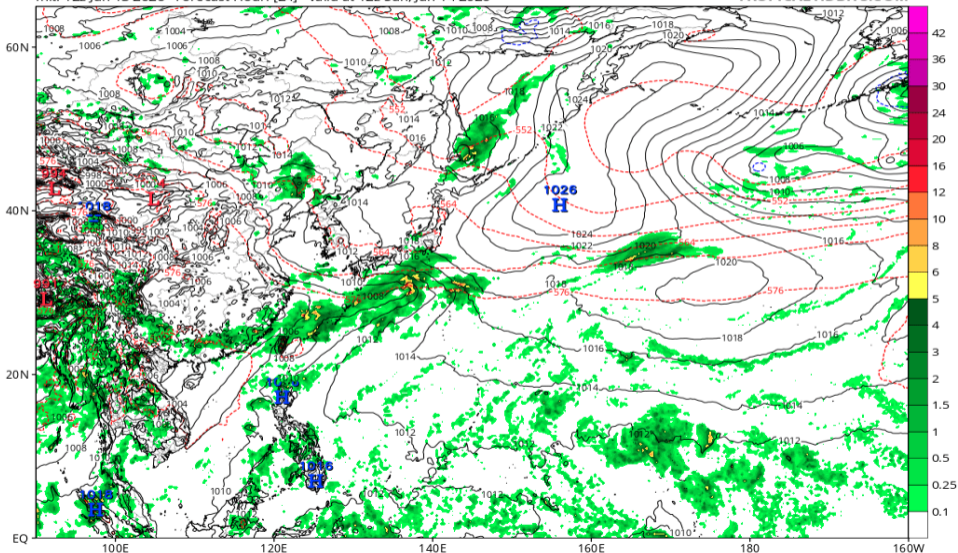


# 地上気圧配置 (ECMWF 06/14 12Z 予報)

ECMWF Instantaneous Precip Rate (mm/hr), MSLP (hPa) & 1000-500mb Thickness (dam)

Init: 12z Jun 13 2026 Forecast Hour: [24] valid at 12z Sun, Jun 14 2026

TROPICALTIDBITS.COM

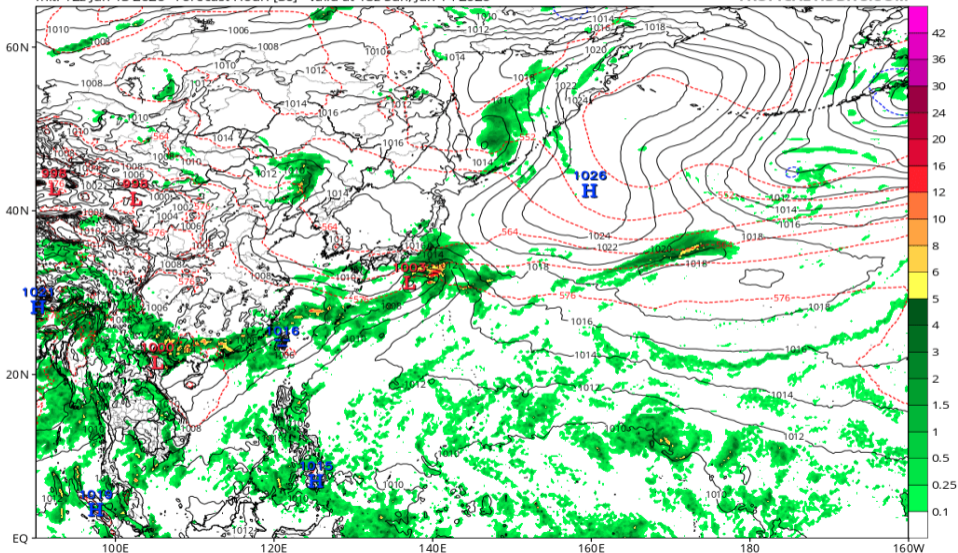


# 地上気圧配置 (ECMWF 06/14 18Z 予報)

ECMWF Instantaneous Precip Rate (mm/hr), MSLP (hPa) & 1000-500mb Thickness (dam)

Init: 12z Jun 13 2026 Forecast Hour: [30] valid at 18z Sun, Jun 14 2026

TROPICALTIDBITS.COM

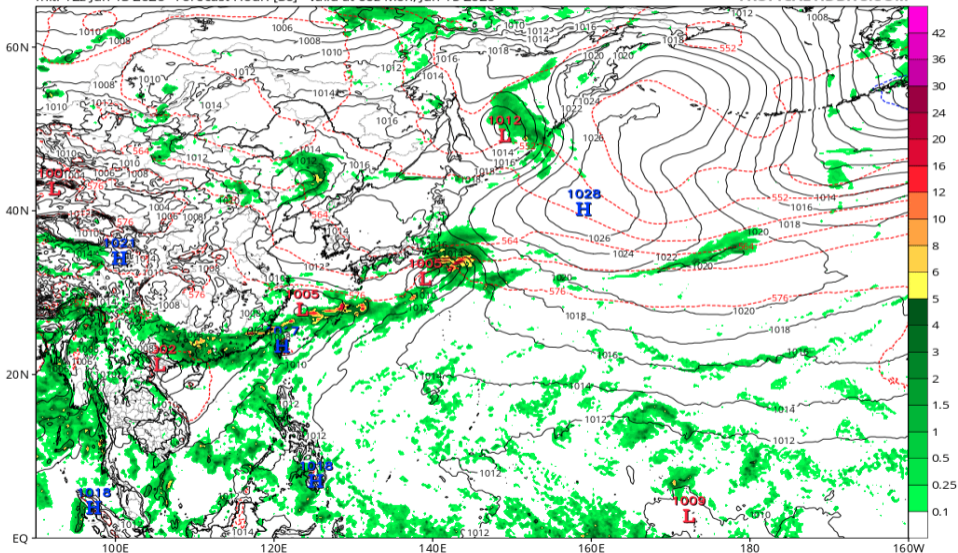


# 地上気圧配置 (ECMWF 06/15 00Z 予報)

ECMWF Instantaneous Precip Rate (mm/hr), MSLP (hPa) & 1000-500mb Thickness (dam)

Init: 12z Jun 13 2026 Forecast Hour: [36] valid at 00z Mon, Jun 15 2026

TROPICALTIDBITS.COM

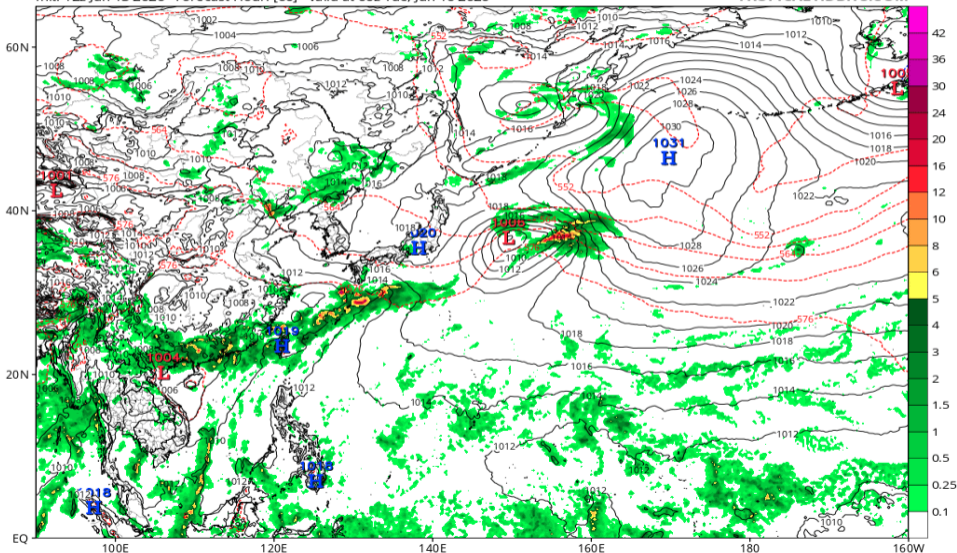


# 地上気圧配置 (ECMWF 06/16 00Z 予報)

ECMWF Instantaneous Precip Rate (mm/hr), MSLP (hPa) & 1000-500mb Thickness (dam)

Init: 12z Jun 13 2026 Forecast Hour: [60] valid at 00z Tue, Jun 16 2026

TROPICALTIDBITS.COM

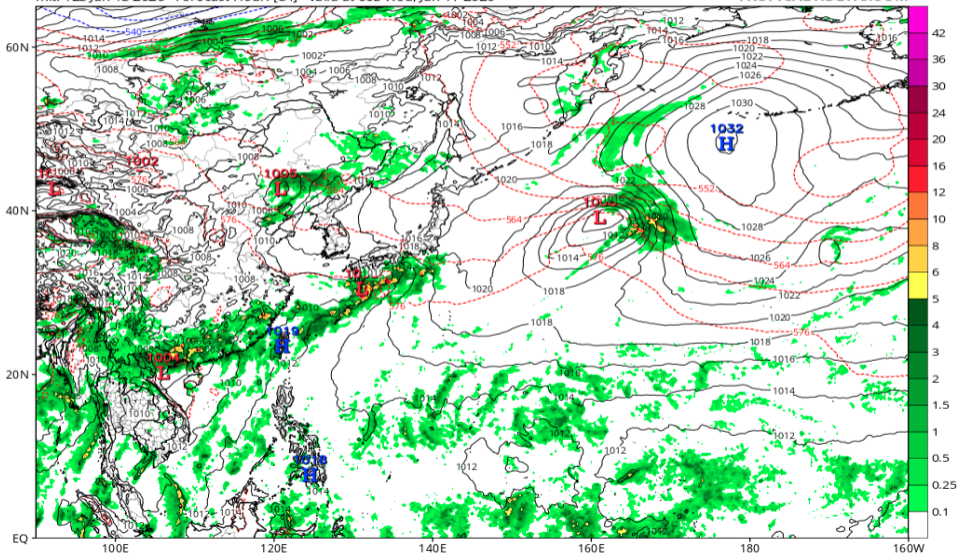


# 地上気圧配置 (ECMWF 06/17 00Z 予報)

ECMWF Instantaneous Precip Rate (mm/hr), MSLP (hPa) & 1000-500mb Thickness (dam)

Init: 12z Jun 13 2026 Forecast Hour: [84] valid at 00z Wed, Jun 17 2026

TROPICALTIDBITS.COM

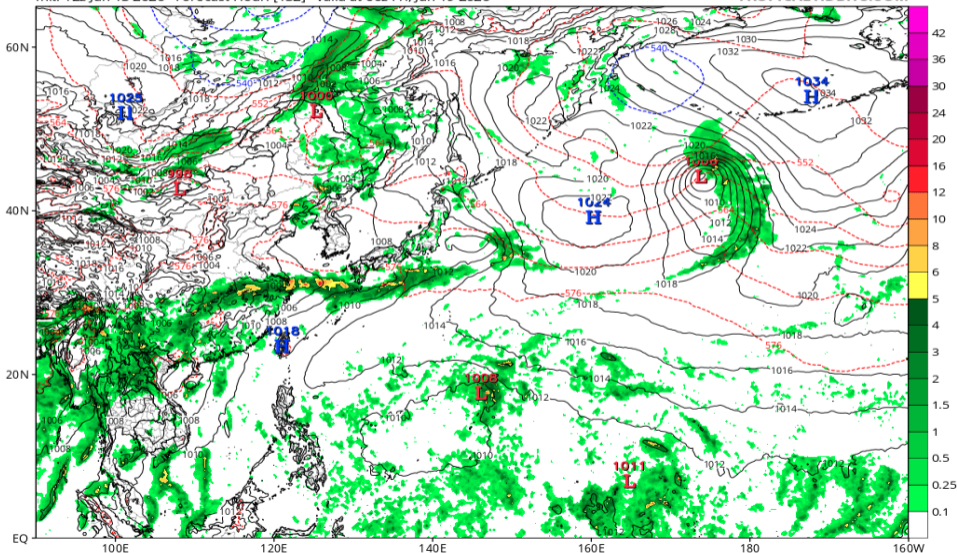


# 地上気圧配置 (ECMWF 06/19 00Z 予報)

ECMWF Instantaneous Precip Rate (mm/hr), MSLP (hPa) & 1000-500mb Thickness (dam)

Init: 12z Jun 13 2026 Forecast Hour: [132] valid at 00z Fri, Jun 19 2026

TROPICALTIDBITS.COM

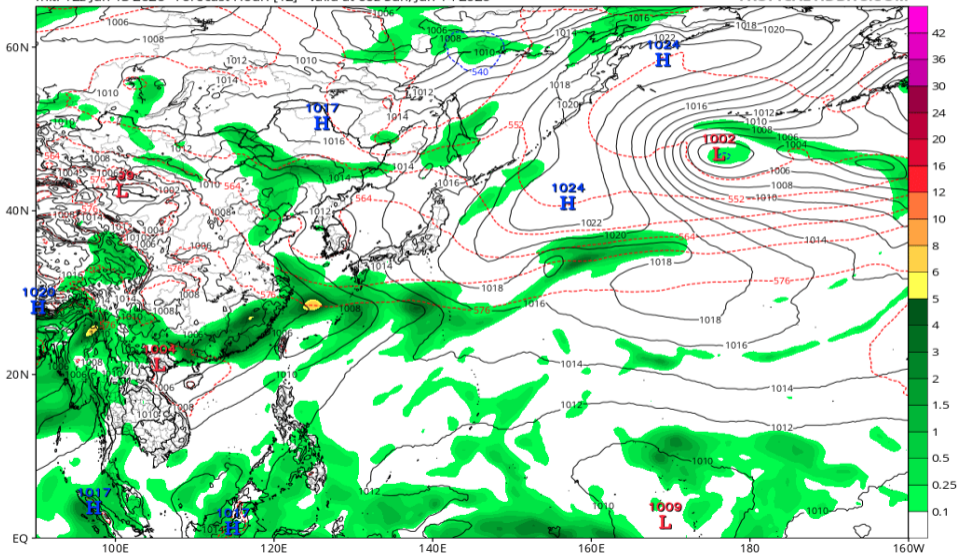


# 地上気圧配置 (AIFS 06/14 00Z 予報)

EC-AIFS 6-hour Averaged Precip Rate (mm/hr), MSLP (hPa) & 1000-500mb Thickness (dam)

Init: 12z Jun 13 2026 Forecast Hour: [12] valid at 00z Sun, Jun 14 2026

TROPICALTIDBITS.COM

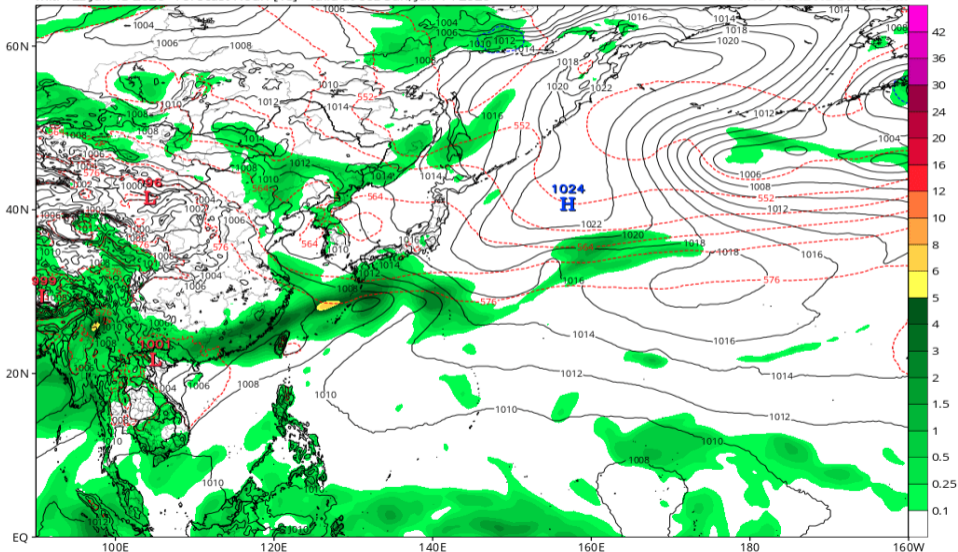


# 地上気圧配置 (AIFS 06/14 06Z 予報)

EC-AIFS 6-hour Averaged Precip Rate (mm/hr), MSLP (hPa) & 1000-500mb Thickness (dam)

Init: 12z Jun 13 2026 Forecast Hour: [18] valid at 06z Sun, Jun 14 2026

TROPICALTIDBITS.COM

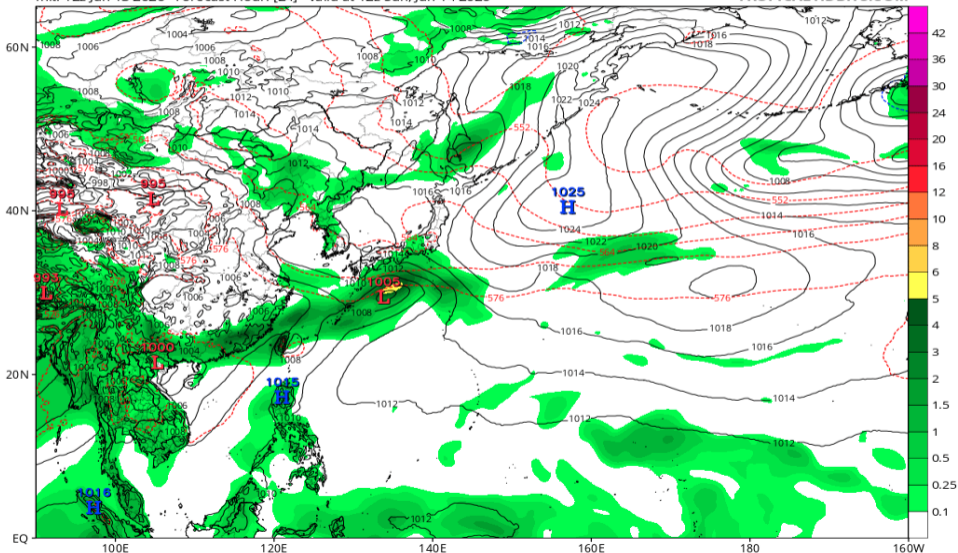


# 地上気圧配置 (AIFS 06/14 12Z 予報)

EC-AIFS 6-hour Averaged Precip Rate (mm/hr), MSLP (hPa) & 1000-500mb Thickness (dam)

Init: 12z Jun 13 2026 Forecast Hour: [24] valid at 12z Sun, Jun 14 2026

TROPICALTIDBITS.COM

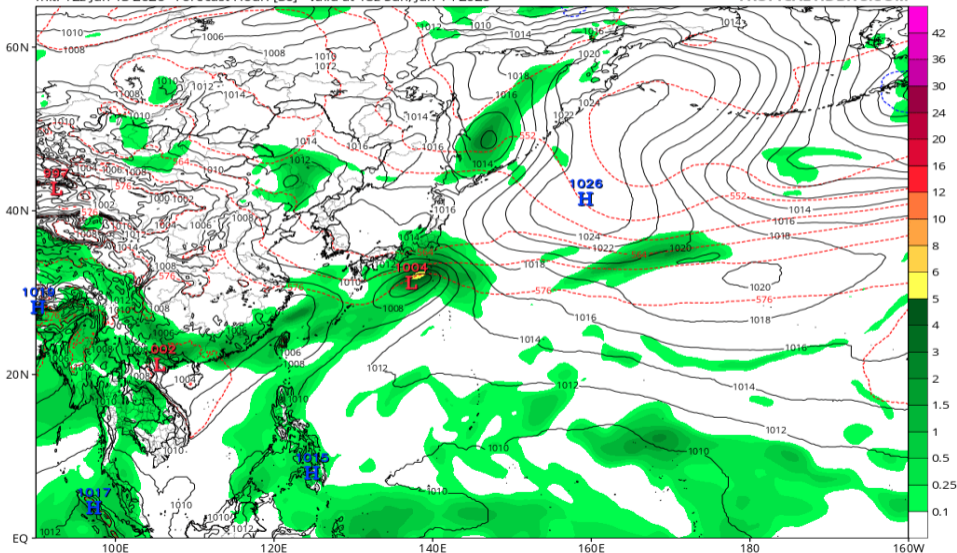


# 地上気圧配置 (AIFS 06/14 18Z 予報)

EC-AIFS 6-hour Averaged Precip Rate (mm/hr), MSLP (hPa) & 1000-500mb Thickness (dam)

Init: 12z Jun 13 2026 Forecast Hour: [30] valid at 18z Sun, Jun 14 2026

TROPICALTIDBITS.COM

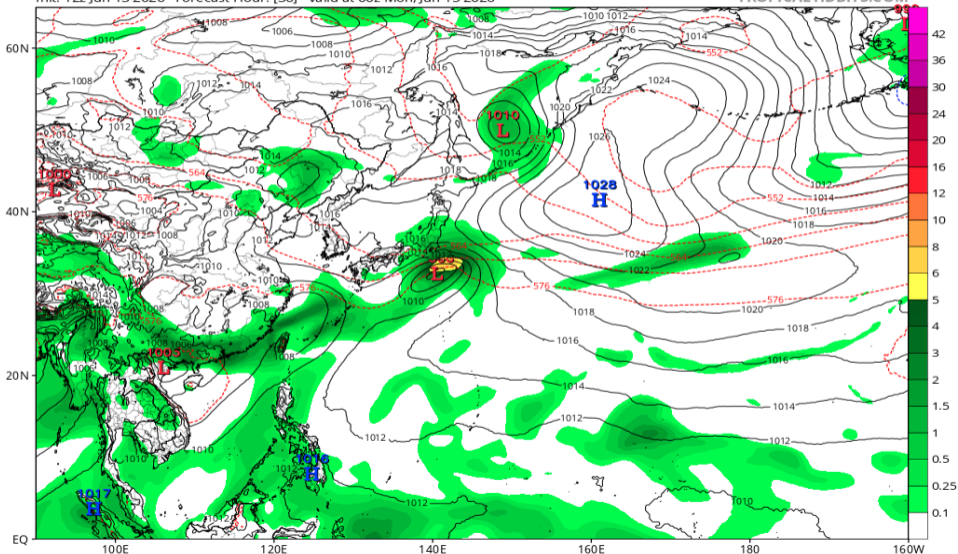


# 地上気圧配置 (AIFS 06/15 00Z 予報)

EC-AIFS 6-hour Averaged Precip Rate (mm/hr), MSLP (hPa) & 1000-500mb Thickness (dam)

Init: 12z Jun 13 2026 Forecast Hour: [36] valid at 00z Mon, Jun 15 2026

TROPICALTIDBITS.COM

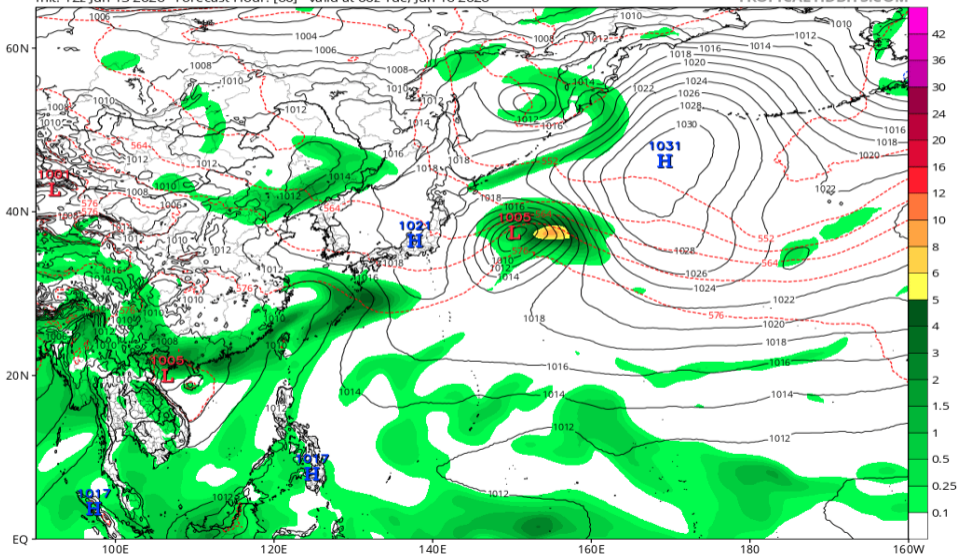


# 地上気圧配置 (AIFS 06/16 00Z 予報)

EC-AIFS 6-hour Averaged Precip Rate (mm/hr), MSLP (hPa) & 1000-500mb Thickness (dam)

Init: 12z Jun 13 2026 Forecast Hour: [60] valid at 00z Tue, Jun 16 2026

TROPICALTIDBITS.COM

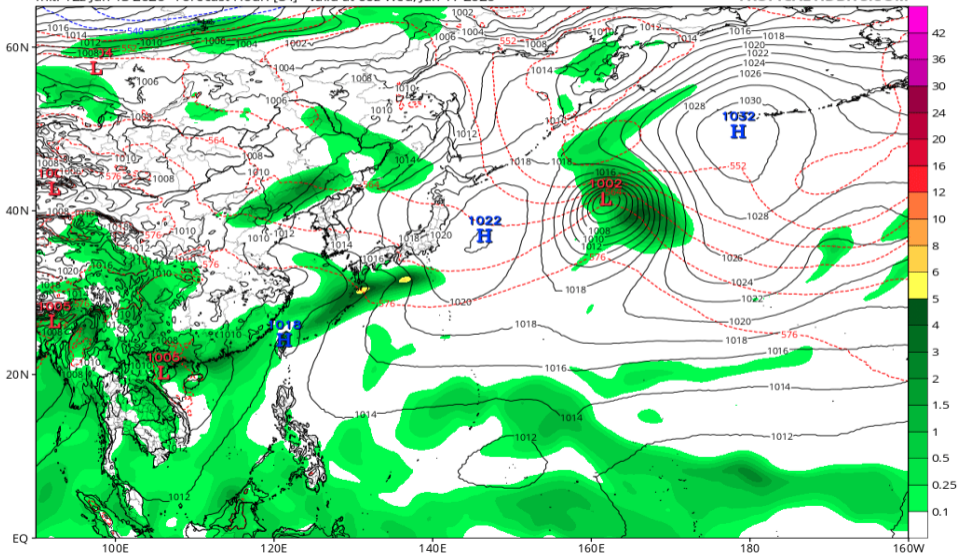


# 地上気圧配置 (AIFS 06/17 00Z 予報)

EC-AIFS 6-hour Averaged Precip Rate (mm/hr), MSLP (hPa) & 1000-500mb Thickness (dam)

Init: 12z Jun 13 2026 Forecast Hour: [84] valid at 00z Wed, Jun 17 2026

TROPICALTIDBITS.COM

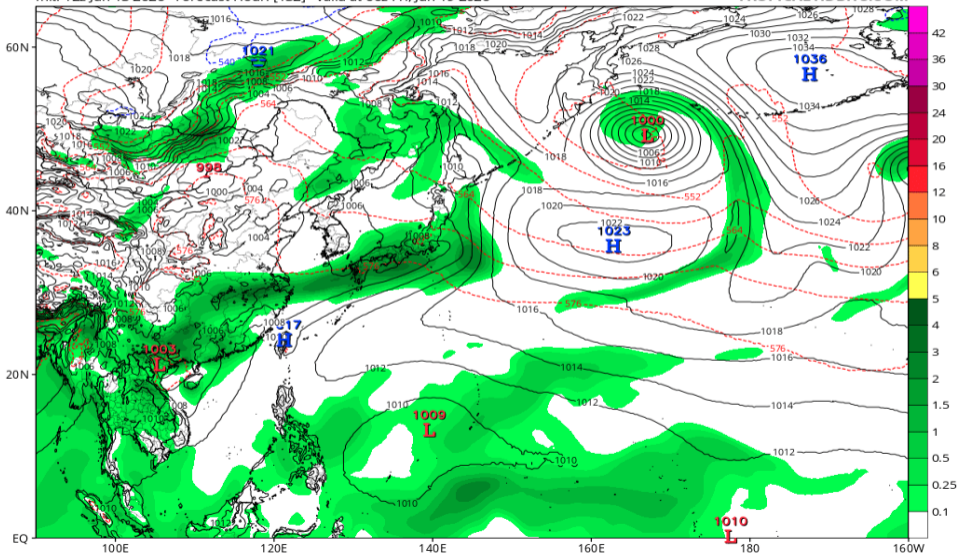


# 地上気圧配置 (AIFS 06/19 00Z 予報)

EC-AIFS 6-hour Averaged Precip Rate (mm/hr), MSLP (hPa) & 1000-500mb Thickness (dam)

Init: 12z Jun 13 2026 Forecast Hour: [132] valid at 00z Fri, Jun 19 2026

TROPICALTIDBITS.COM

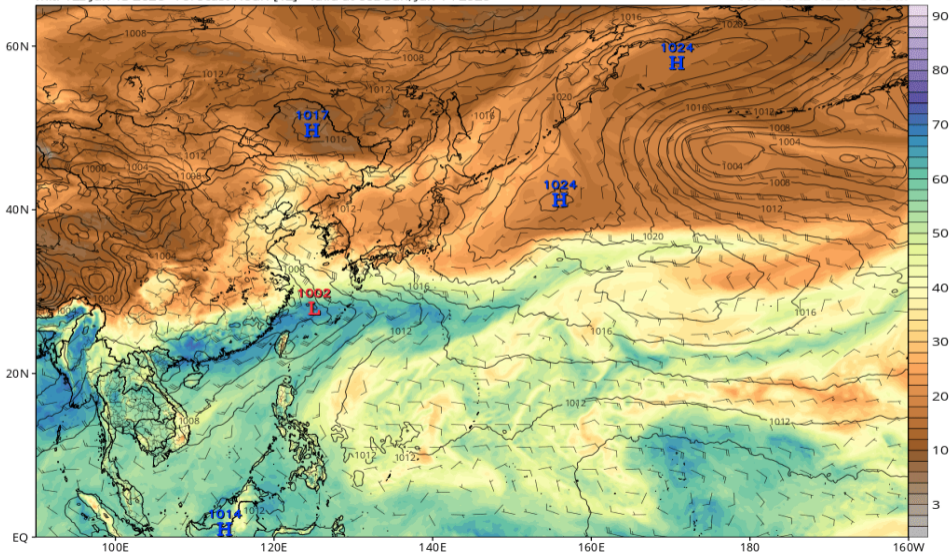


# 可降水量 (GFS 06/14 00Z 予報)

GFS MSLP (mb), Total Precipitable Water (mm), and 850mb Wind (kt)

Init: 12z Jun 13 2026 Forecast Hour: [12] valid at 00z Sun, Jun 14 2026

TROPICALTIDBITS.COM

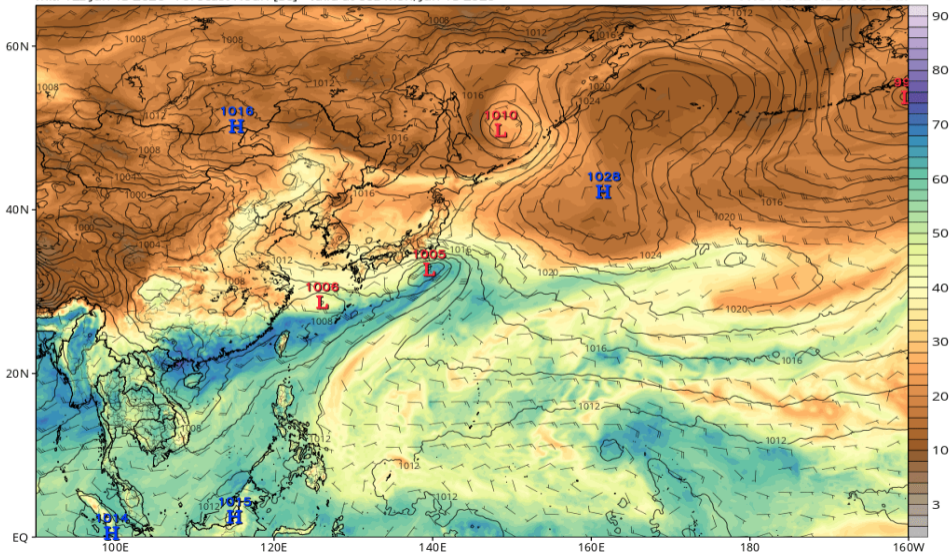


# 可降水量 (GFS 06/15 00Z 予報)

GFS MSLP (mb), Total Precipitable Water (mm), and 850mb Wind (kt)

Init: 12z Jun 13 2026 Forecast Hour: [36] valid at 00z Mon, Jun 15 2026

TROPICALTIDBITS.COM

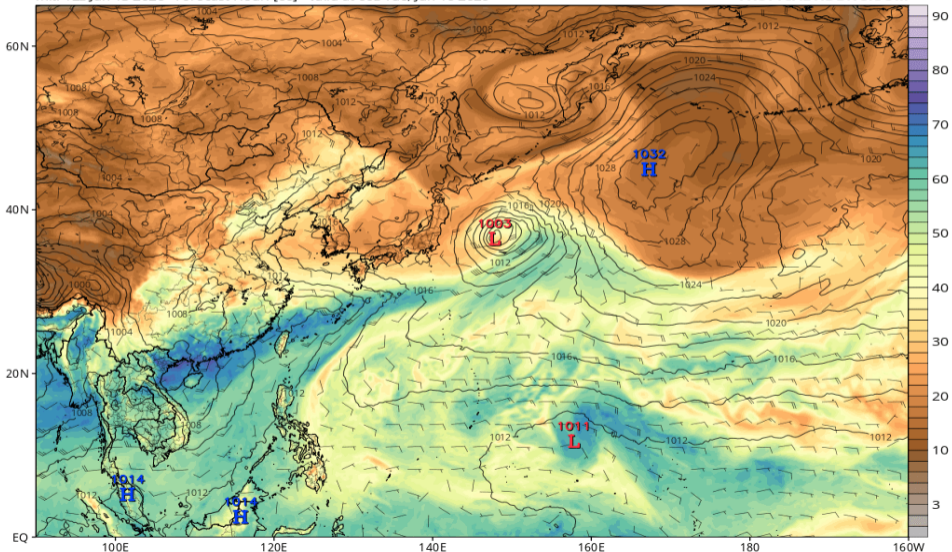


# 可降水量 (GFS 06/16 00Z 予報)

GFS MSLP (mb), Total Precipitable Water (mm), and 850mb Wind (kt)

Init: 12z Jun 13 2026 Forecast Hour: [60] valid at 00z Tue, Jun 16 2026

TROPICALTIDBITS.COM

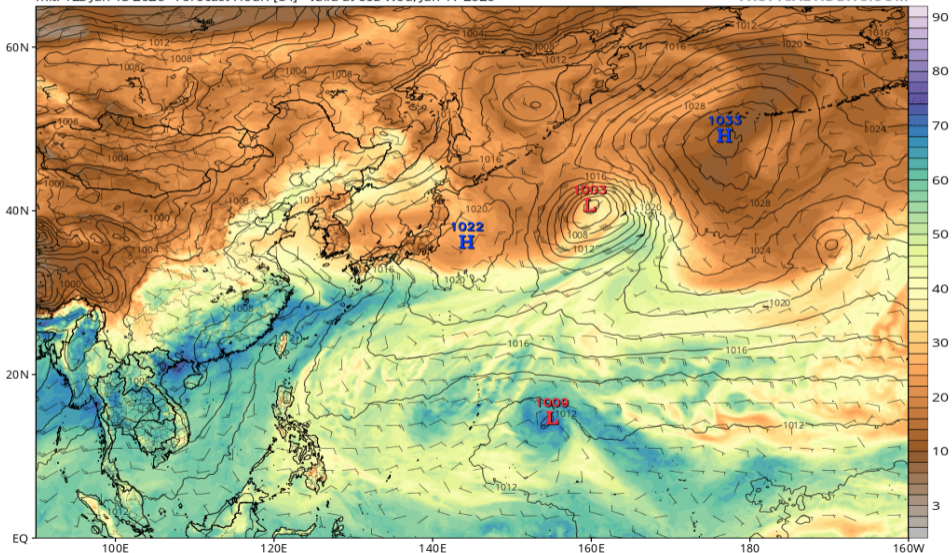


# 可降水量 (GFS 06/17 00Z 予報)

GFS MSLP (mb), Total Precipitable Water (mm), and 850mb Wind (kt)

Init: 12z Jun 13 2026 Forecast Hour: [84] valid at 00z Wed, Jun 17 2026

TROPICALTIDBITS.COM

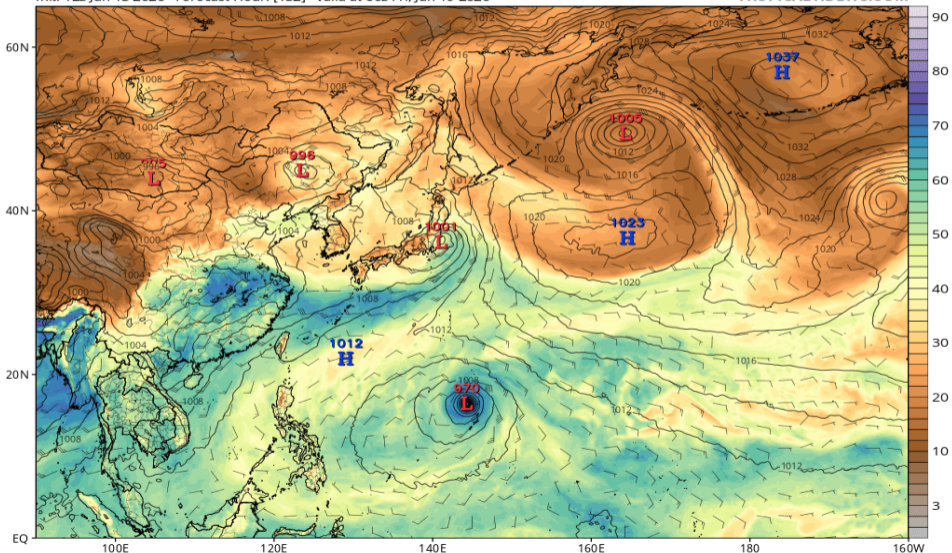


# 可降水量 (GFS 06/19 00Z 予報)

GFS MSLP (mb), Total Precipitable Water (mm), and 850mb Wind (kt)

Init: 12z Jun 13 2026 Forecast Hour: [132] valid at 00z Fri, Jun 19 2026

TROPICALTIDBITS.COM

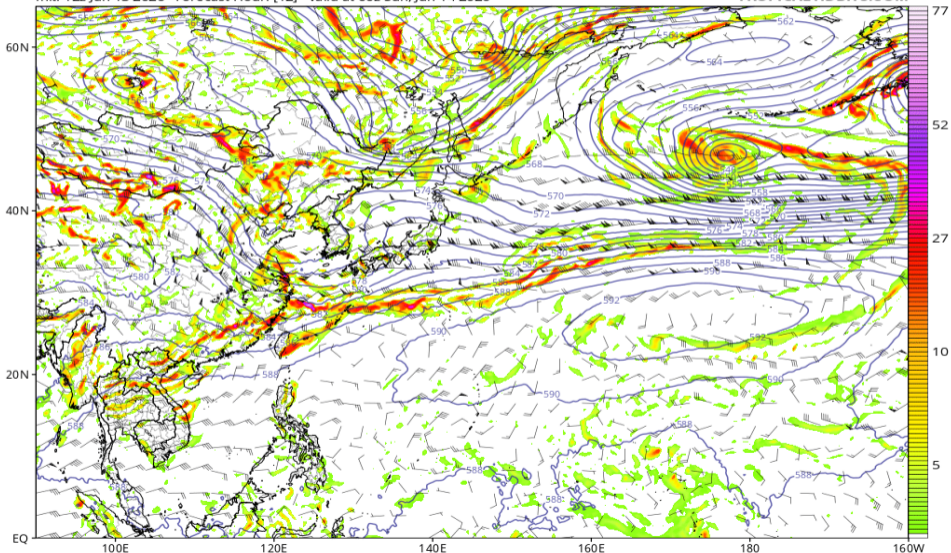


# 渦度 850, Z500, UV200 (GFS 06/14 00Z 予報)

GFS 850 hPa Cyclonic Vorticity ( $10^5 \text{ s}^{-1}$ ), 500 hPa Height (dam), and 200 hPa Wind (kt)

Init: 12z Jun 13 2026 Forecast Hour: [12] valid at 00z Sun, Jun 14 2026

TROPICALTIDBITS.COM

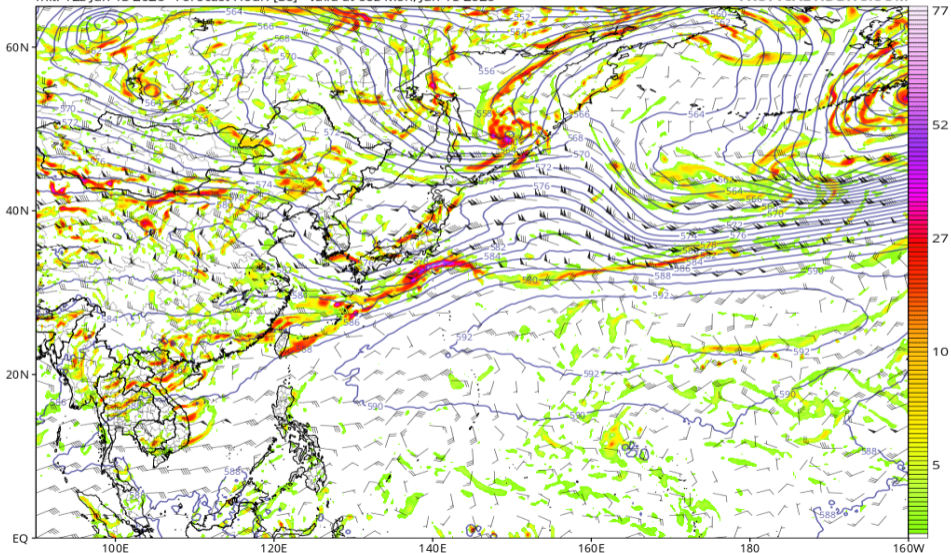


# 渦度 850, Z500, UV200 (GFS 06/15 00Z 予報)

GFS 850 hPa Cyclonic Vorticity ( $10^5 \text{ s}^{-1}$ ), 500 hPa Height (dam), and 200 hPa Wind (kt)

Init: 12z Jun 13 2026 Forecast Hour: [36] valid at 00z Mon, Jun 15 2026

TROPICALTIDBITS.COM

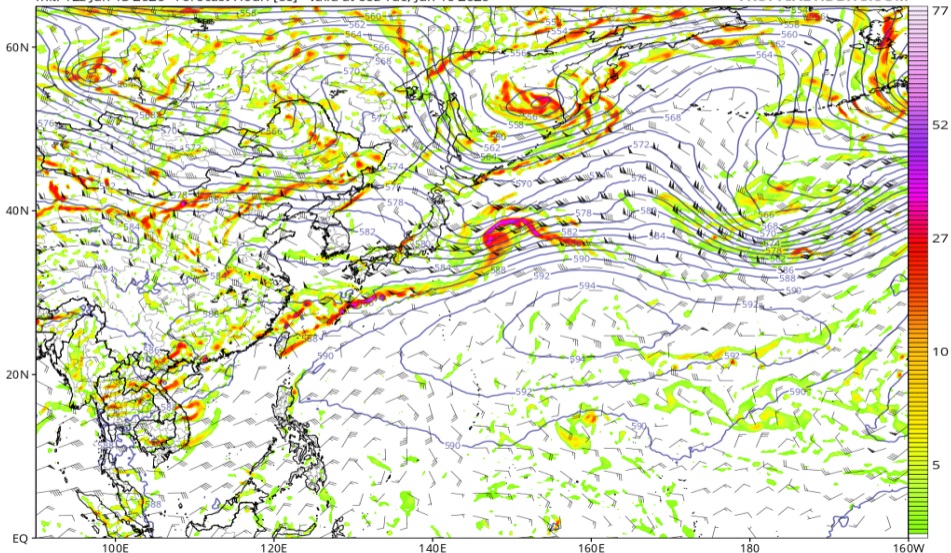


# 渦度 850, Z500, UV200 (GFS 06/16 00Z 予報)

GFS 850 hPa Cyclonic Vorticity ( $10^5 \text{ s}^{-1}$ ), 500 hPa Height (dam), and 200 hPa Wind (kt)

Init: 12z Jun 13 2026 Forecast Hour: [60] valid at 00z Tue, Jun 16 2026

TROPICALTIDBITS.COM

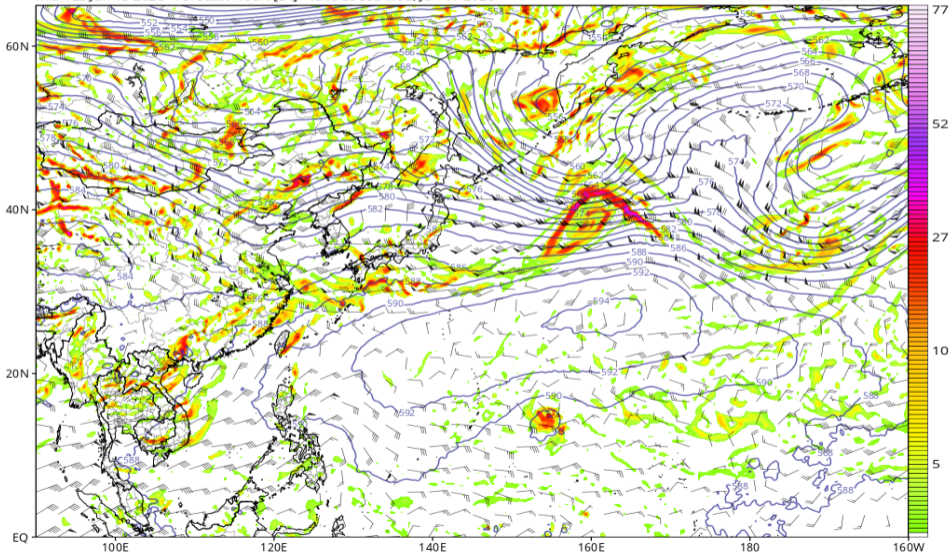


# 渦度 850, Z500, UV200 (GFS 06/17 00Z 予報)

GFS 850 hPa Cyclonic Vorticity ( $10^5 \text{ s}^{-1}$ ), 500 hPa Height (dam), and 200 hPa Wind (kt)

Init: 12z Jun 13 2026 Forecast Hour: [84] valid at 00z Wed, Jun 17 2026

TROPICALTIDBITS.COM

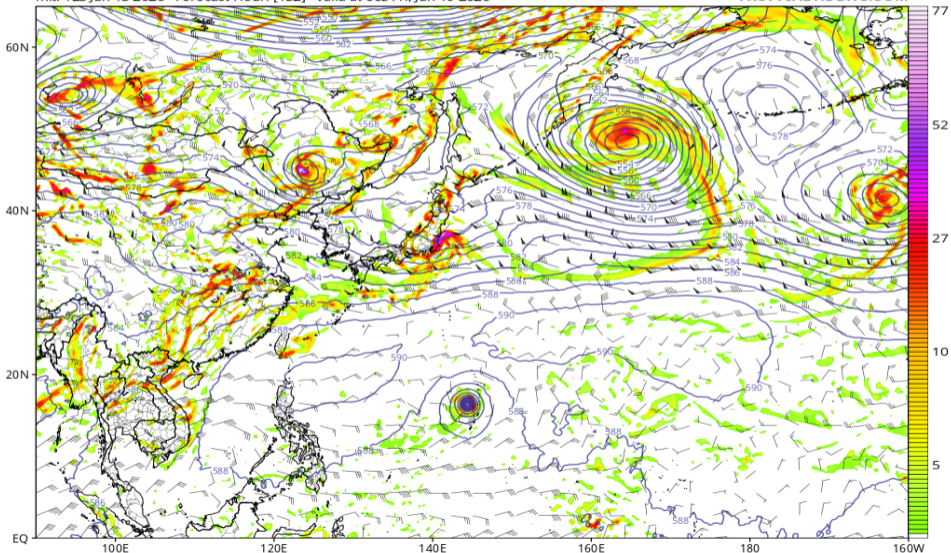


# 渦度 850, Z500, UV200 (GFS 06/19 00Z 予報)

GFS 850 hPa Cyclonic Vorticity ( $10^5 \text{ s}^{-1}$ ), 500 hPa Height (dam), and 200 hPa Wind (kt)

Init: 12z Jun 13 2026 Forecast Hour: [132] valid at 00z Fri, Jun 19 2026

TROPICALTIDBITS.COM

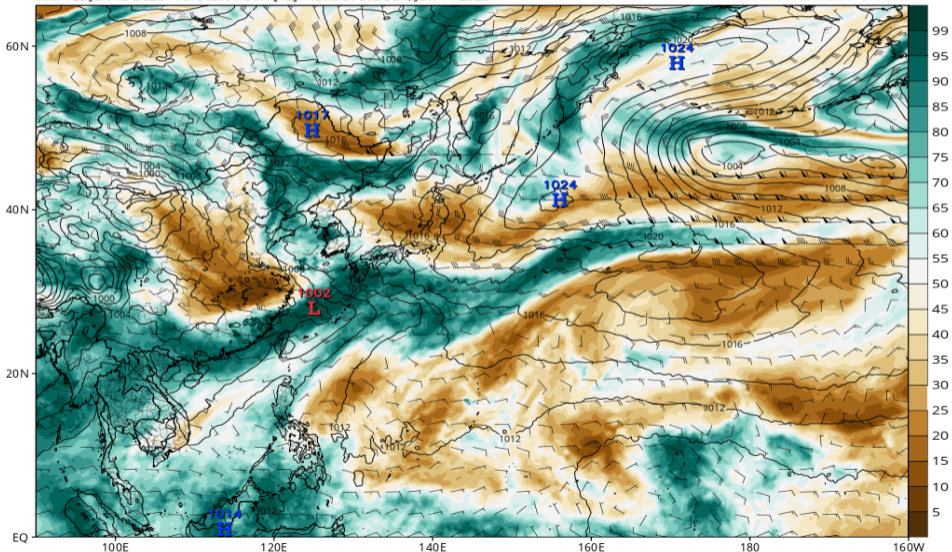


# RH700-300 (GFS 06/14 00Z 予報)

GFS MSLP (mb), 700-300 hPa Relative Humidity (%), and 700-300 hPa Wind (kt)

Init: 12z Jun 13 2026 Forecast Hour: [12] valid at 00z Sun, Jun 14 2026

TROPICALTIDBITS.COM

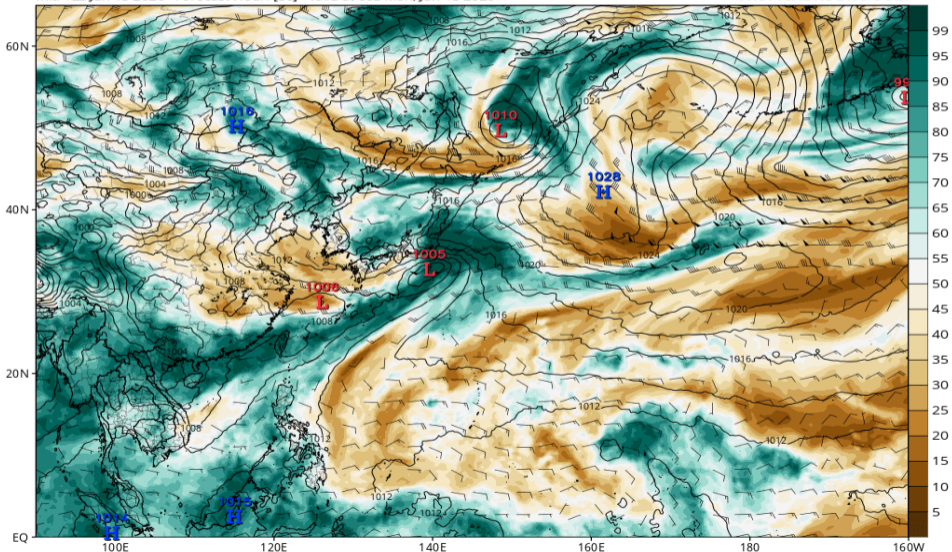


# RH700-300 (GFS 06/15 00Z 予報)

GFS MSLP (mb), 700-300 hPa Relative Humidity (%), and 700-300 hPa Wind (kt)

Init: 12z Jun 13 2026 Forecast Hour: [36] valid at 00z Mon, Jun 15 2026

TROPICALTIDBITS.COM

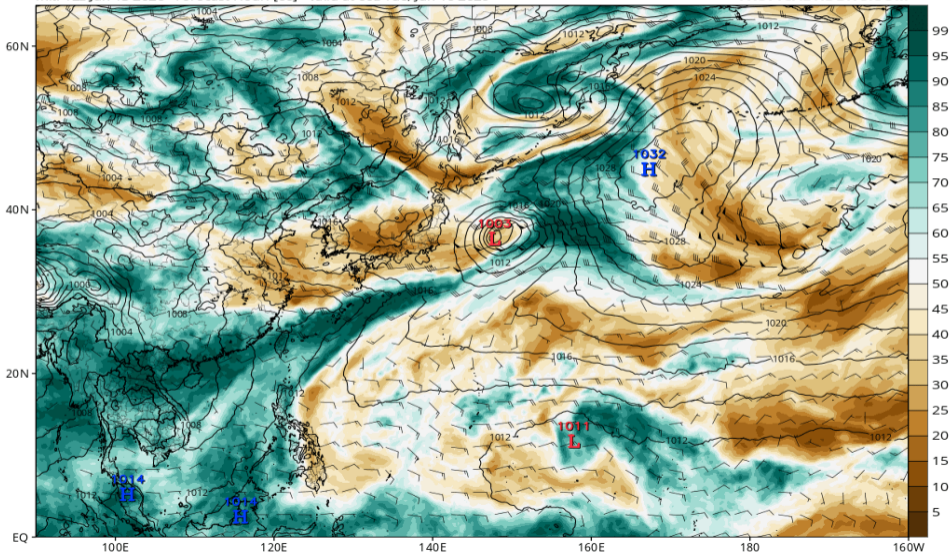


# RH700-300 (GFS 06/16 00Z 予報)

GFS MSLP (mb), 700-300 hPa Relative Humidity (%), and 700-300 hPa Wind (kt)

Init: 12z Jun 13 2026 Forecast Hour: [60] valid at 00z Tue, Jun 16 2026

TROPICALTIDBITS.COM

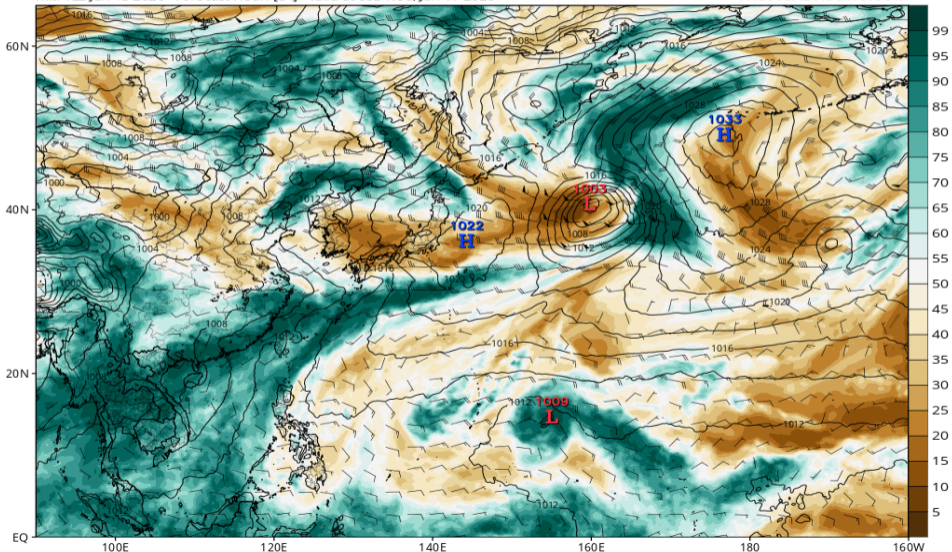


# RH700-300 (GFS 06/17 00Z 予報)

GFS MSLP (mb), 700-300 hPa Relative Humidity (%), and 700-300 hPa Wind (kt)

Init: 12z Jun 13 2026 Forecast Hour: [84] valid at 00z Wed, Jun 17 2026

TROPICALTIDBITS.COM

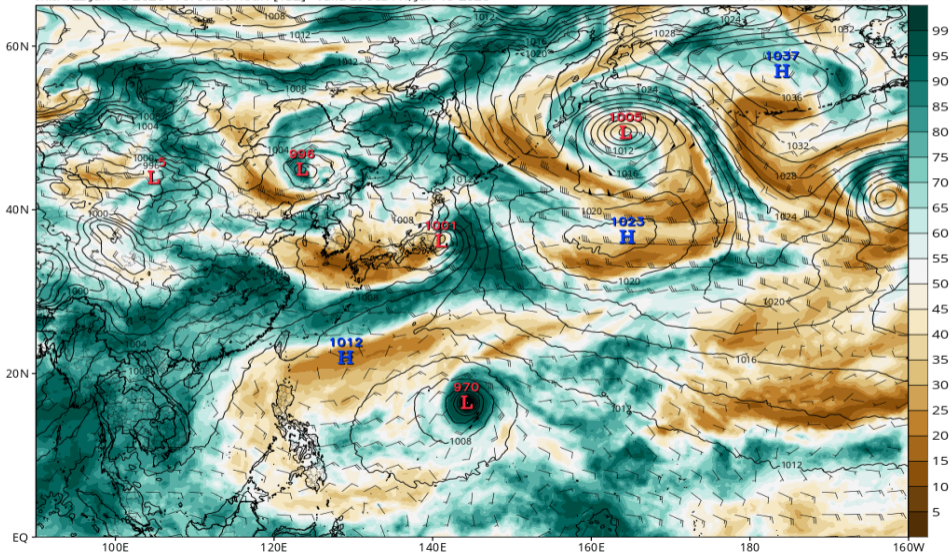


# RH700-300 (GFS 06/19 00Z 予報)

GFS MSLP (mb), 700-300 hPa Relative Humidity (%), and 700-300 hPa Wind (kt)

Init: 12z Jun 13 2026 Forecast Hour: [132] valid at 00z Fri, Jun 19 2026

TROPICALTIDBITS.COM

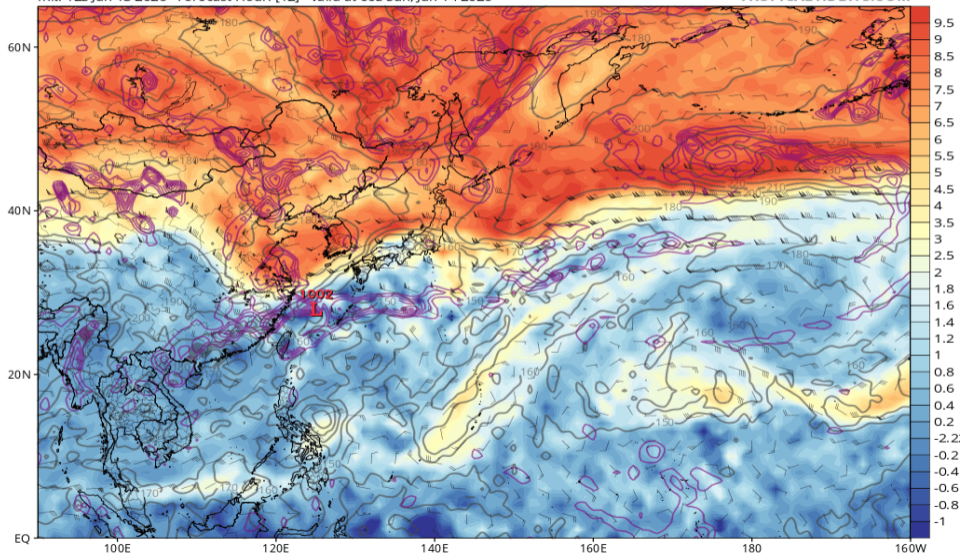


# 渦位 355K (GFS 06/14 00Z 予報)

GFS 355K Cyclonic PV (PVU), Wind (kt), Pressure (hPa, gray), & 850 hPa Cyclonic Vorticity (purple) [1.0°x1.0° grid]

Init: 12z Jun 13 2026 Forecast Hour: [12] valid at 00z Sun, Jun 14 2026

TROPICALTIDBITS.COM

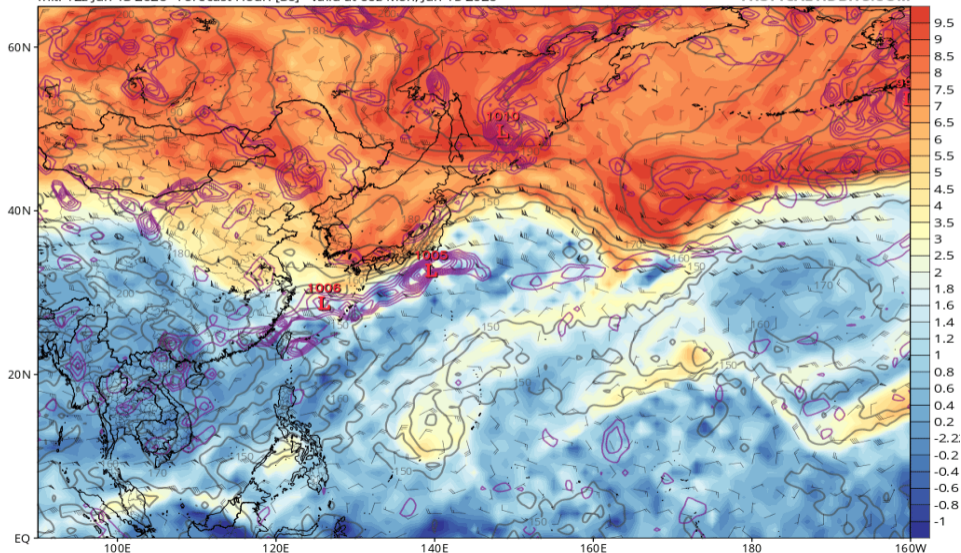


# 渦位 355K (GFS 06/15 00Z 予報)

GFS 355K Cyclonic PV (PVU), Wind (kt), Pressure (hPa, gray), & 850 hPa Cyclonic Vorticity (purple) [1.0°x1.0° grid]

Init: 12z Jun 13 2026 Forecast Hour: [36] valid at 00z Mon, Jun 15 2026

TROPICALTIDBITS.COM

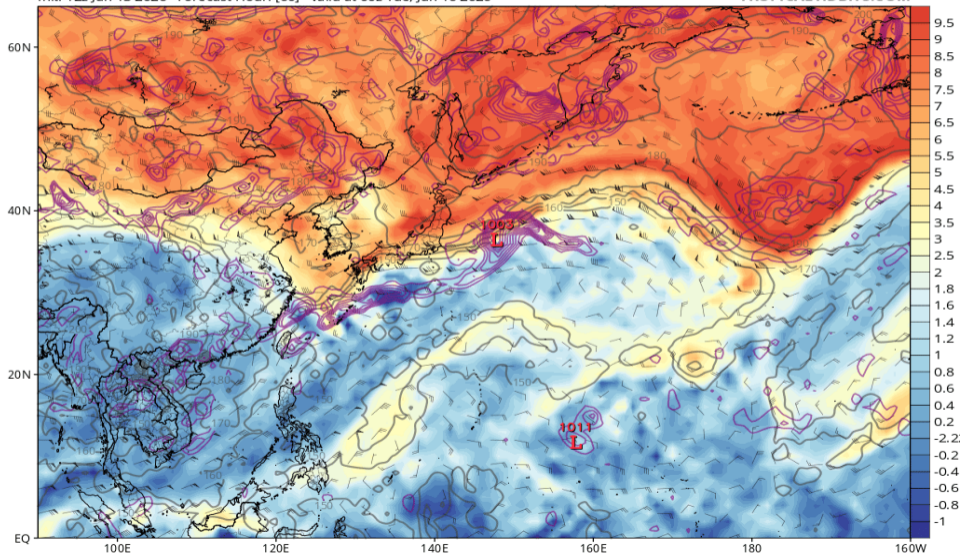


# 渦位 355K (GFS 06/16 00Z 予報)

GFS 355K Cyclonic PV (PVU), Wind (kt), Pressure (hPa, gray), & 850 hPa Cyclonic Vorticity (purple) [1.0°x1.0° grid]

Init: 12z Jun 13 2026 Forecast Hour: [60] valid at 00z Tue, Jun 16 2026

TROPICALTIDBITS.COM

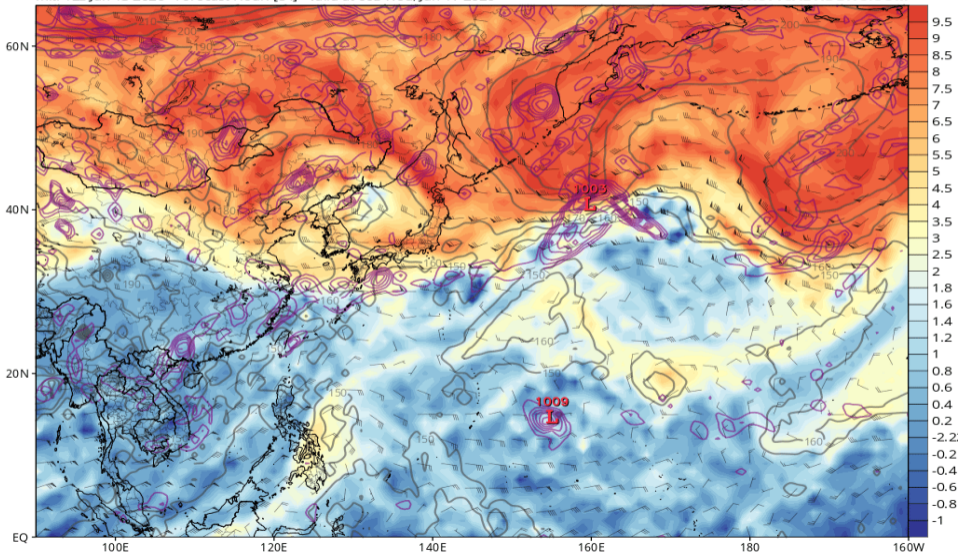


# 渦位 355K (GFS 06/17 00Z 予報)

GFS 355K Cyclonic PV (PVU), Wind (kt), Pressure (hPa, gray), & 850 hPa Cyclonic Vorticity (purple) [1.0°x1.0° grid]

Init: 12z Jun 13 2026 Forecast Hour: [84] valid at 00z Wed, Jun 17 2026

TROPICALTIDBITS.COM

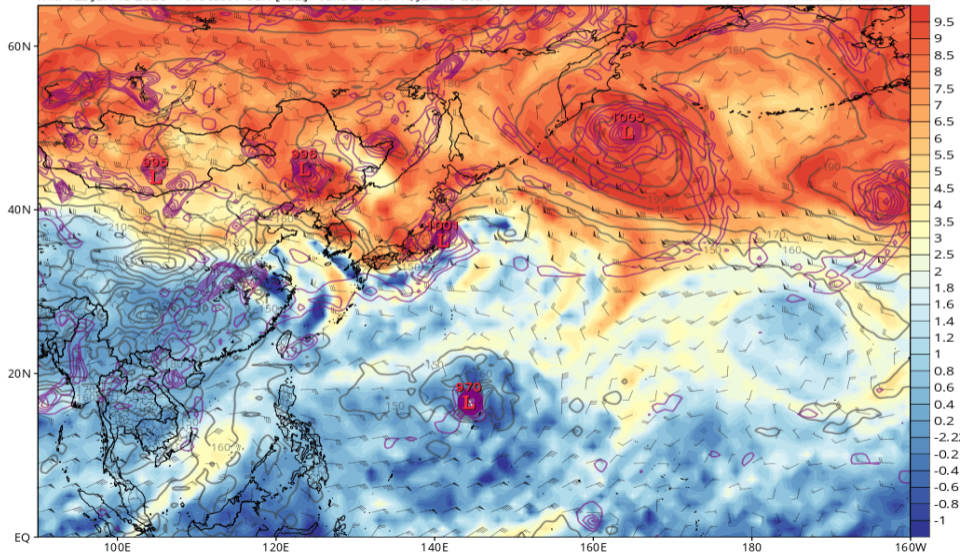


# 渦位 355K (GFS 06/19 00Z 予報)

GFS 355K Cyclonic PV (PVU), Wind (kt), Pressure (hPa, gray), & 850 hPa Cyclonic Vorticity (purple) [1.0°x1.0° grid]

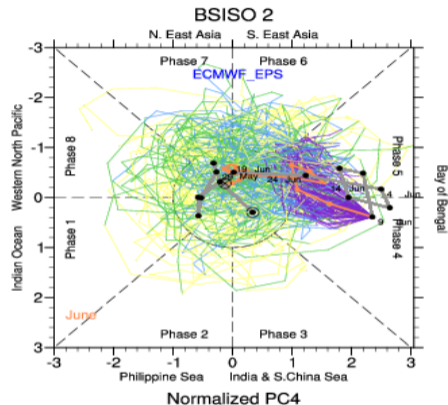
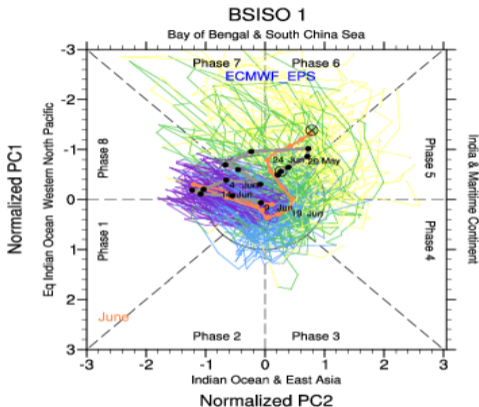
Init: 12z Jun 13 2026 Forecast Hour: [132] valid at 00z Fri, Jun 19 2026

TROPICALTIDBITS.COM



# BSISO 予測 (ECMWFens 06/10 初期)

BSISO Forecast for 10-June-2026 to 29-June-2026



Re-analysis

Ensemble Mean

0-4d

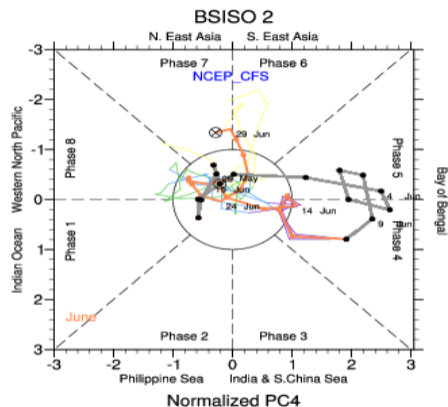
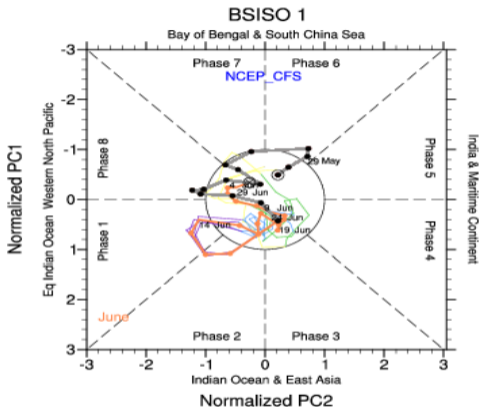
5-9d

10-14d

15-19d

# BSISO 予測 (NCEPCFSens 06/10 初期)

BSISO Forecast for 11-June-2026 to 30-June-2026



Re-analysis

Ensemble Mean

0-4d

5-9d

10-14d

15-19d