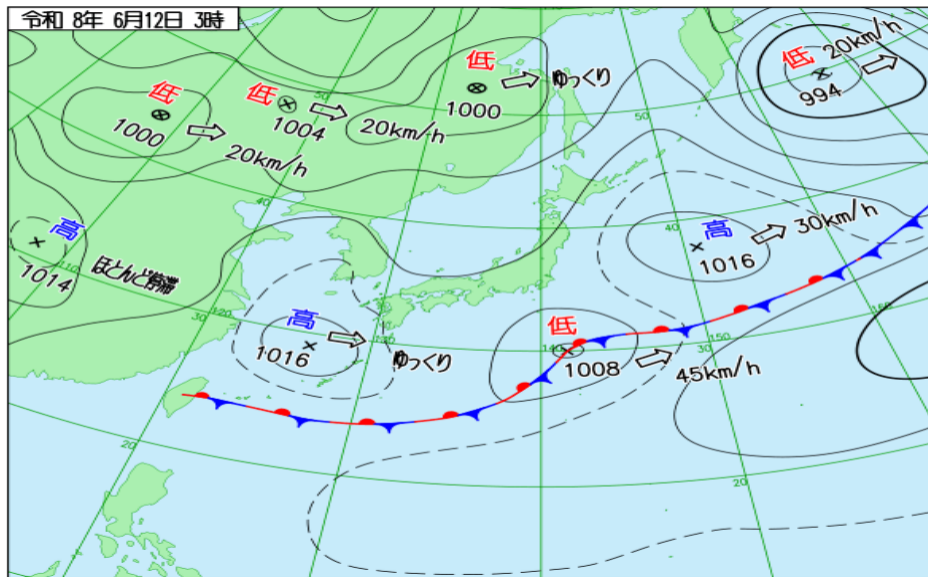
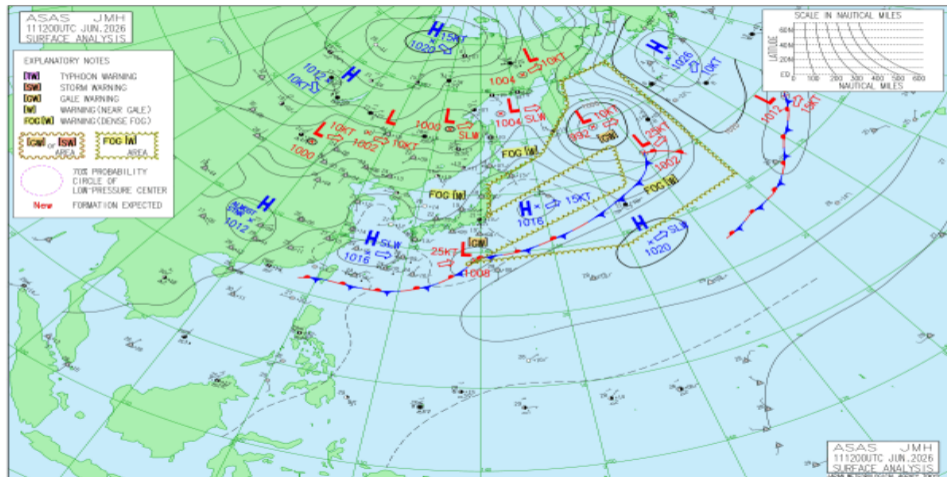


JMA 日本域実況天気図 06/11 18Z

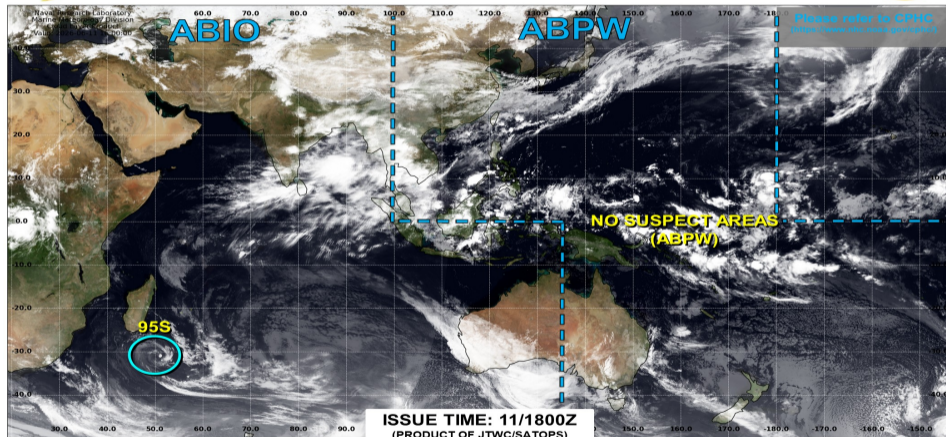


JMA アジア太平洋域実況天気図 06/11 12Z





JOINT TYPHOON WARNING CENTER



TC development unlikely within 24 hours



TC development likely, but expected to occur beyond 24 hours



TC development likely within 24 hours (Reference TCFA)

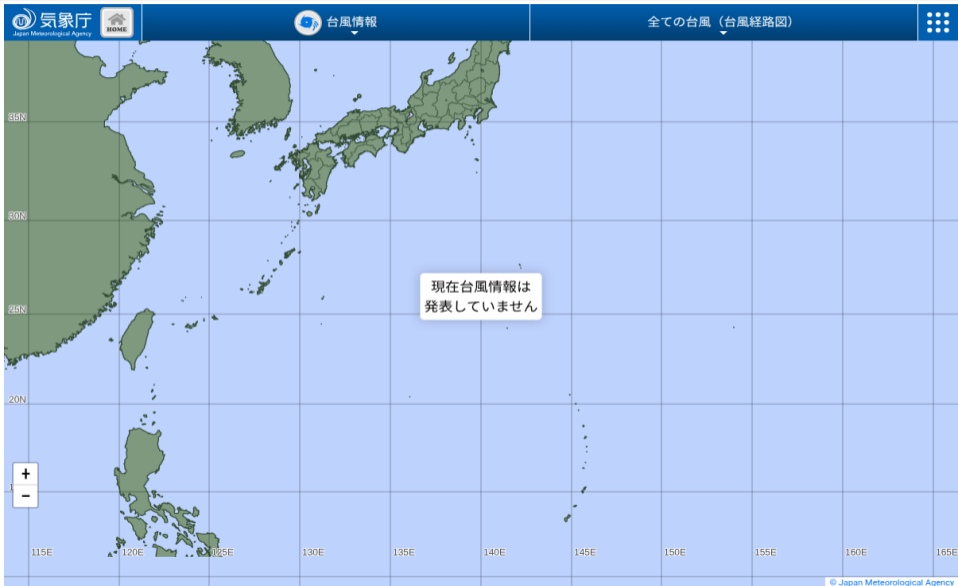


Monitoring for potential transition to TC. Invest label color denotes tropical transition probability

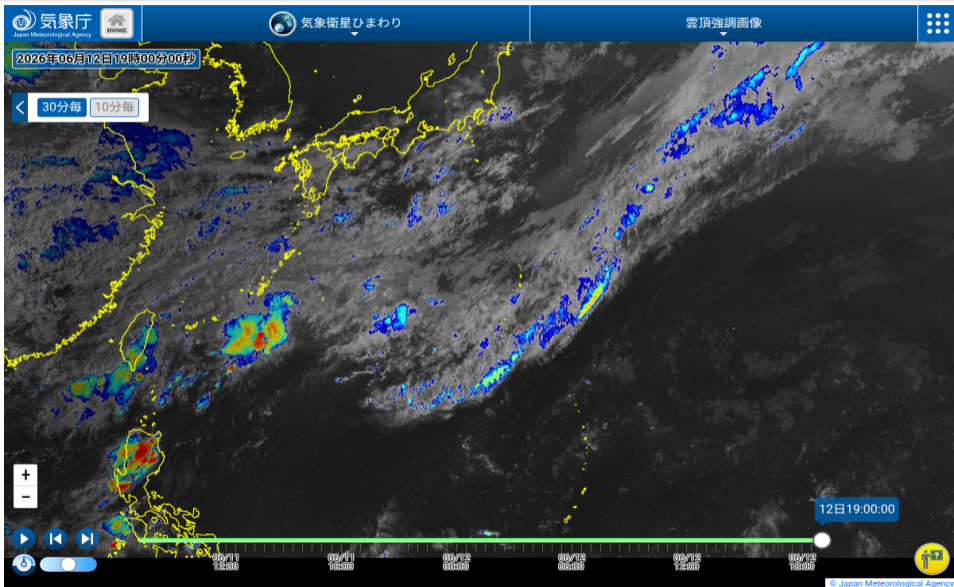


Tropical Cyclone (Reference Warning)

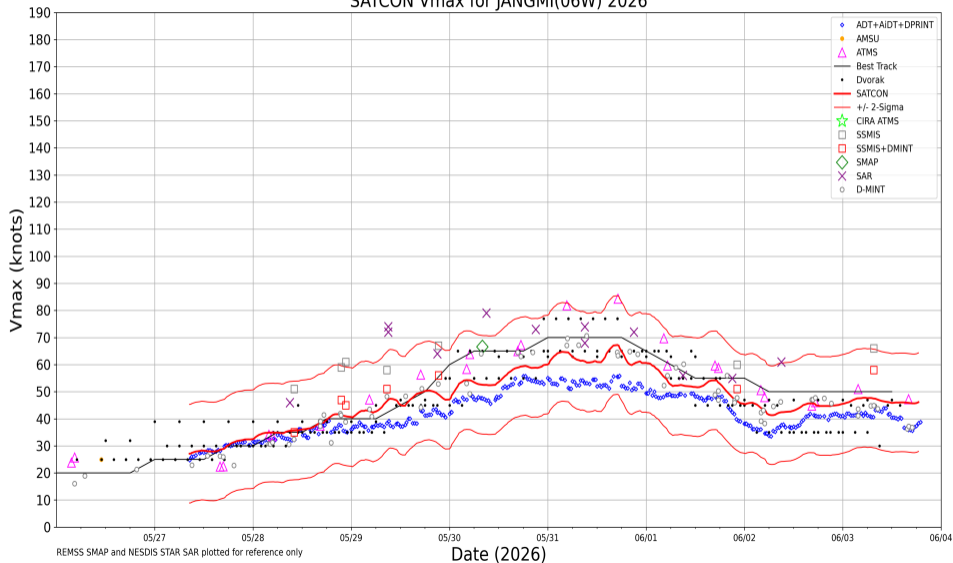
JMA 台風実況



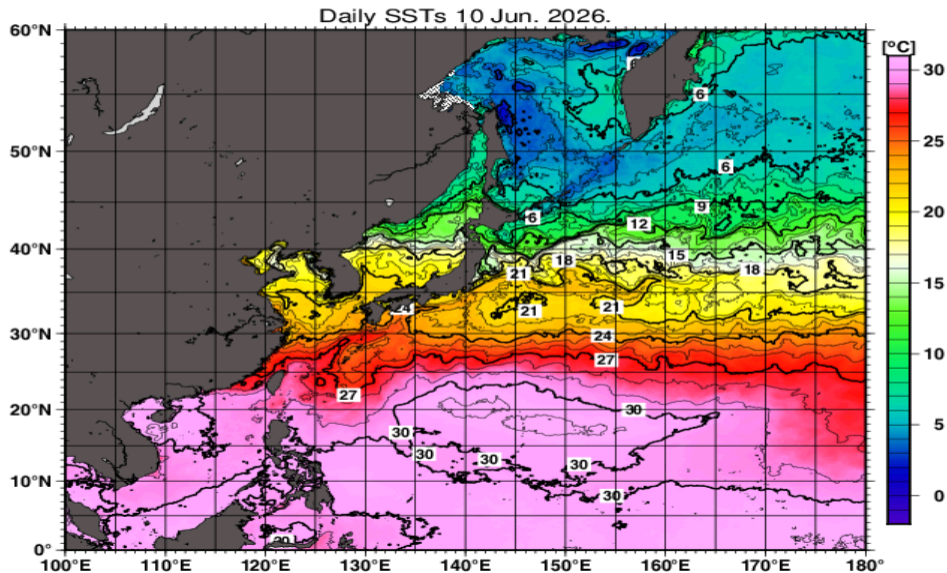
ひまわり雲頂強調



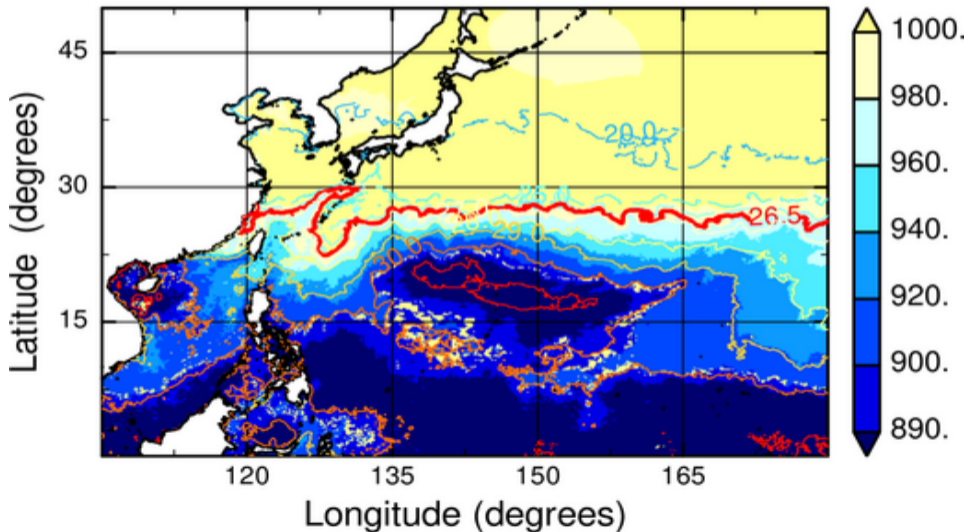
SATCON Vmax for JANGMI(06W) 2026



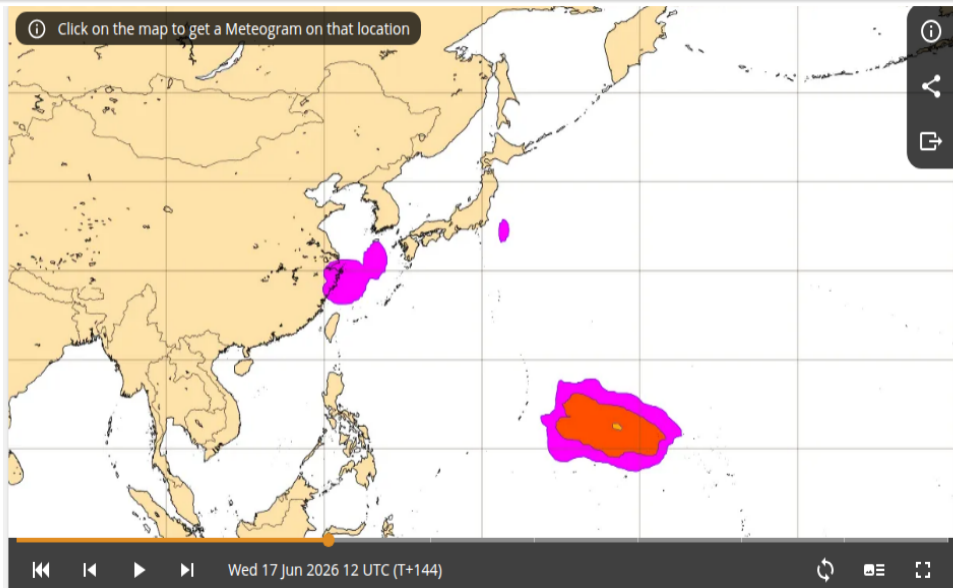
JMA 海面水温解析



MPI_{BE}, JMAGSM+HIMSST (mb) (00:00:00Z10Jun2026)



ECMWF TC genesis 06/17 12Z (6 日先) 予報



No Figure

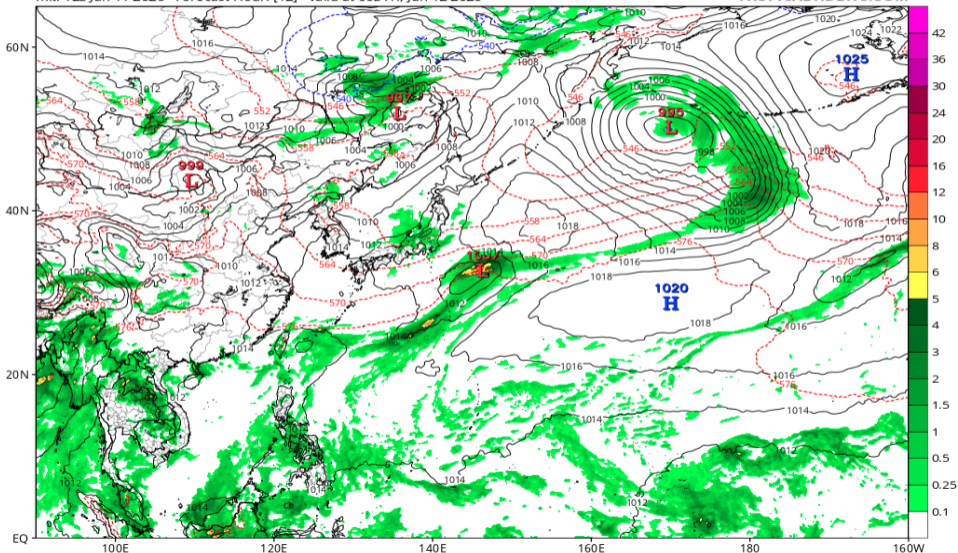
No Figure

地上気圧配置 (GFS 06/12 00Z 予報)

GFS 6-hour Averaged Precip Rate (mm/hr), MSLP (hPa) & 1000-500mb Thickness (dam)

Init: 12z Jun 11 2026 Forecast Hour: [12] valid at 00z Fri, Jun 12 2026

TROPICALTIDBITS.COM

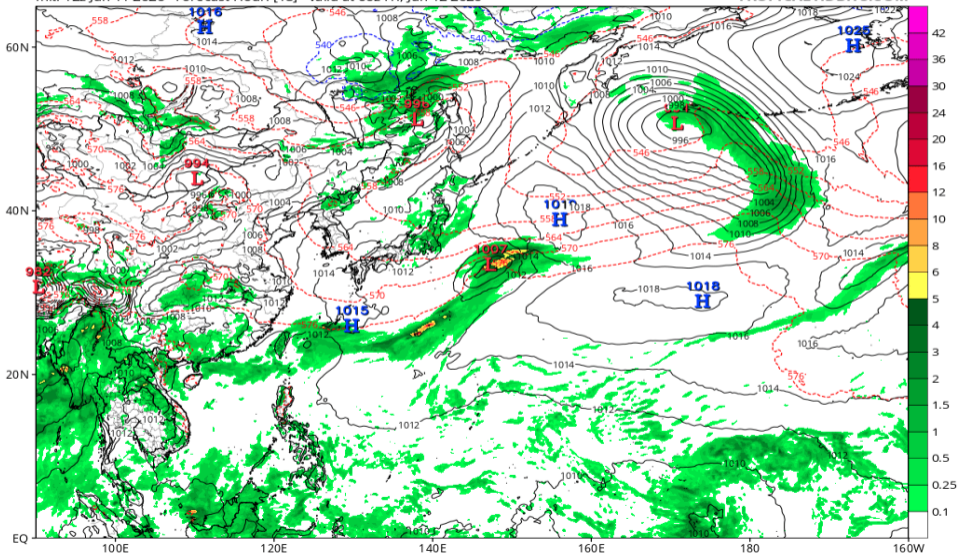


地上気圧配置 (GFS 06/12 06Z 予報)

GFS 6-hour Averaged Precip Rate (mm/hr), MSLP (hPa) & 1000-500mb Thickness (dam)

Init: 12z Jun 11 2026 Forecast Hour: [18] valid at 06z Fri, Jun 12 2026

TROPICALTIDBITS.COM

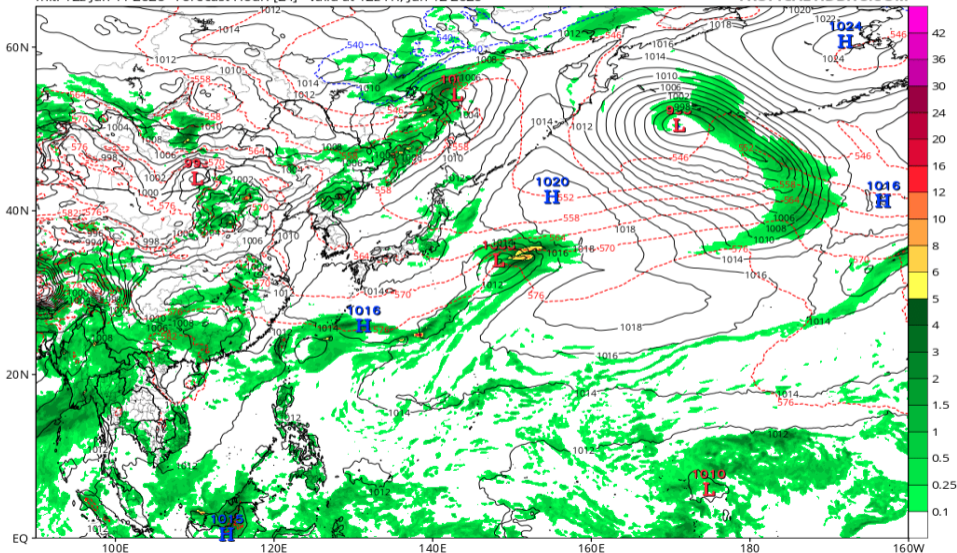


地上気圧配置 (GFS 06/12 12Z 予報)

GFS 6-hour Averaged Precip Rate (mm/hr), MSLP (hPa) & 1000-500mb Thickness (dam)

Init: 12z Jun 11 2026 Forecast Hour: [24] valid at 12z Fri, Jun 12 2026

TROPICALTIDBITS.COM

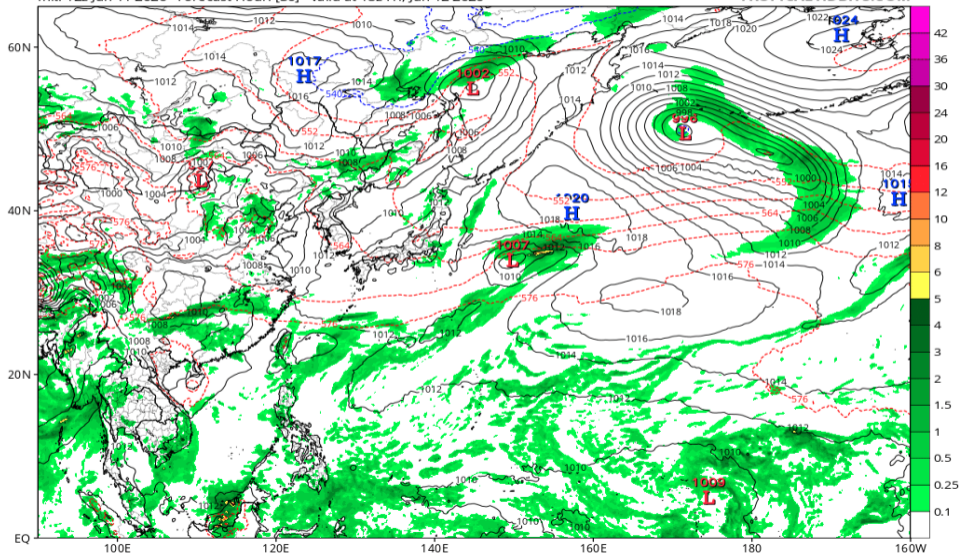


地上気圧配置 (GFS 06/12 18Z 予報)

GFS 6-hour Averaged Precip Rate (mm/hr), MSLP (hPa) & 1000-500mb Thickness (dam)

Init: 12z Jun 11 2026 Forecast Hour: [30] valid at 18z Fri, Jun 12 2026

TROPICALTIDBITS.COM

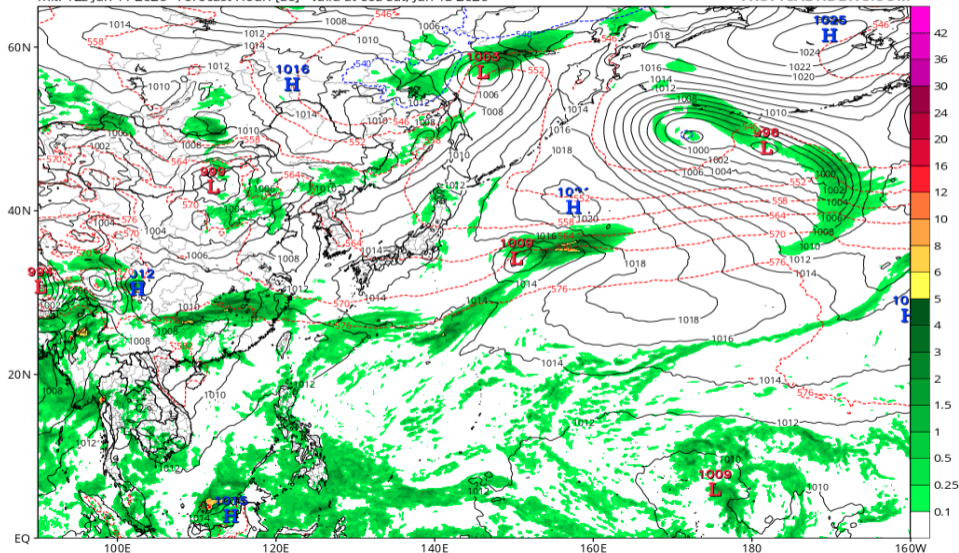


地上気圧配置 (GFS 06/13 00Z 予報)

GFS 6-hour Averaged Precip Rate (mm/hr), MSLP (hPa) & 1000-500mb Thickness (dam)

Init: 12z Jun 11 2026 Forecast Hour: [36] valid at 00z Sat, Jun 13 2026

TROPICALTIDBITS.COM

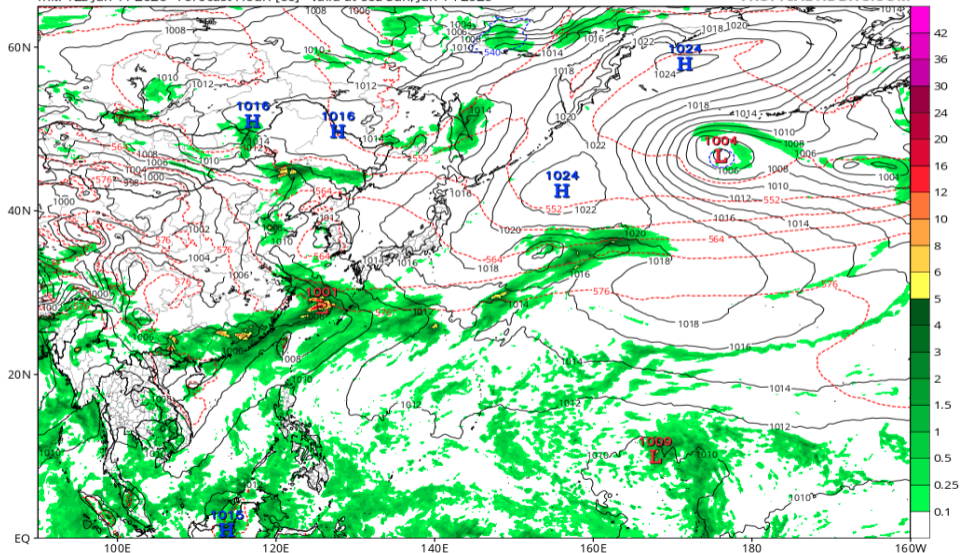


地上気圧配置 (GFS 06/14 00Z 予報)

GFS 6-hour Averaged Precip Rate (mm/hr), MSLP (hPa) & 1000-500mb Thickness (dam)

Init: 12z Jun 11 2026 Forecast Hour: [60] valid at 00z Sun, Jun 14 2026

TROPICALTIDBITS.COM

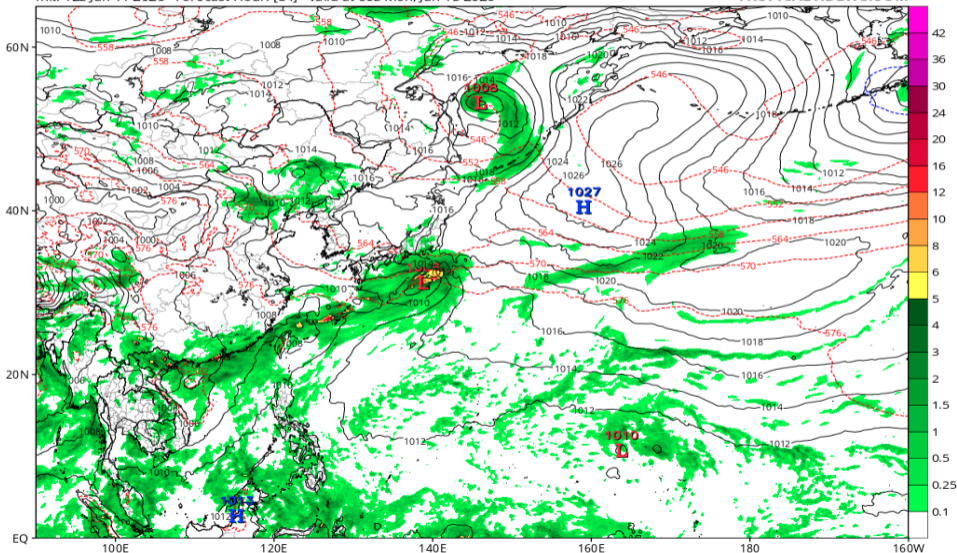


地上気圧配置 (GFS 06/15 00Z 予報)

GFS 6-hour Averaged Precip Rate (mm/hr), MSLP (hPa) & 1000-500mb Thickness (dam)

Init: 12z Jun 11 2026 Forecast Hour: [84] valid at 00z Mon, Jun 15 2026

TROPICALTIDBITS.COM

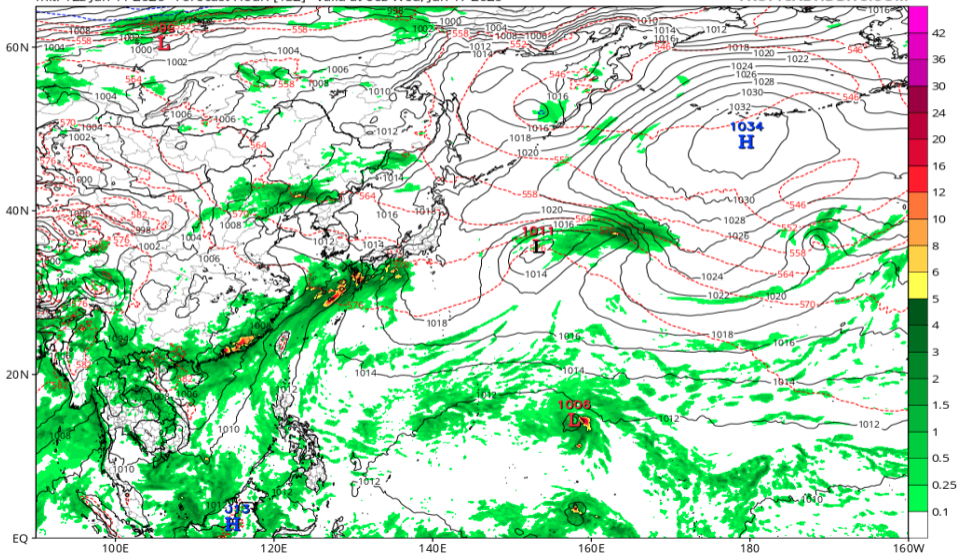


地上気圧配置 (GFS 06/17 00Z 予報)

GFS 6-hour Averaged Precip Rate (mm/hr), MSLP (hPa) & 1000-500mb Thickness (dam)

Init: 12z Jun 11 2026 Forecast Hour: [132] valid at 00z Wed, Jun 17 2026

TROPICALTIDBITS.COM

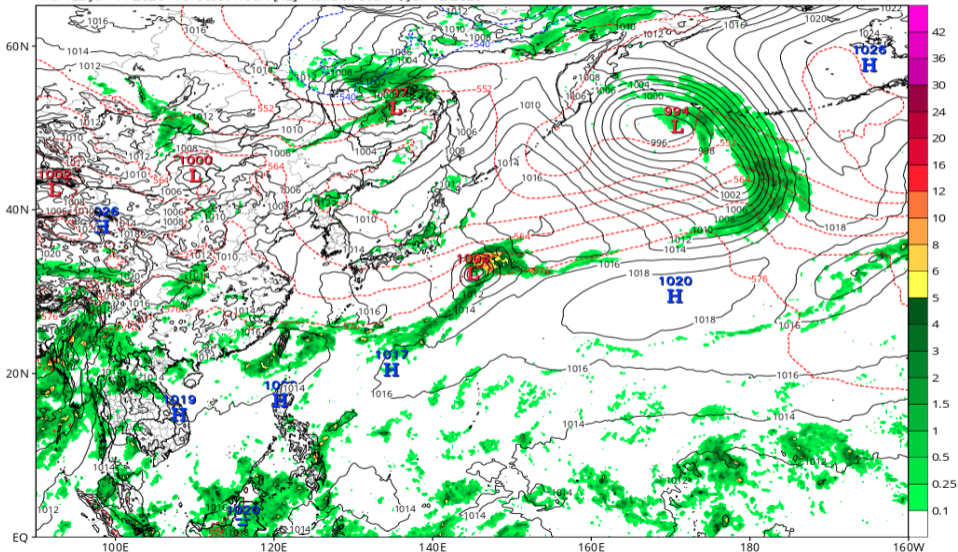


地上気圧配置 (ECMWF 06/12 00Z 予報)

ECMWF Instantaneous Precip Rate (mm/hr), MSLP (hPa) & 1000-500mb Thickness (dam)

Init: 12z Jun 11 2026 Forecast Hour: [12] valid at 00z Fri, Jun 12 2026

TROPICALTIDBITS.COM

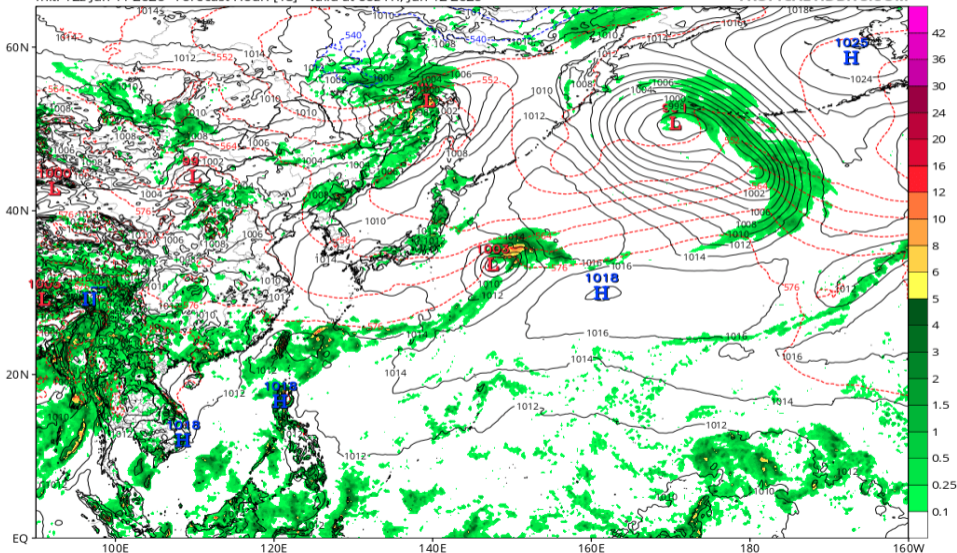


地上気圧配置 (ECMWF 06/12 06Z 予報)

ECMWF Instantaneous Precip Rate (mm/hr), MSLP (hPa) & 1000-500mb Thickness (dam)

Init: 12z Jun 11 2026 Forecast Hour: [18] valid at 06z Fri, Jun 12 2026

TROPICALTIDBITS.COM

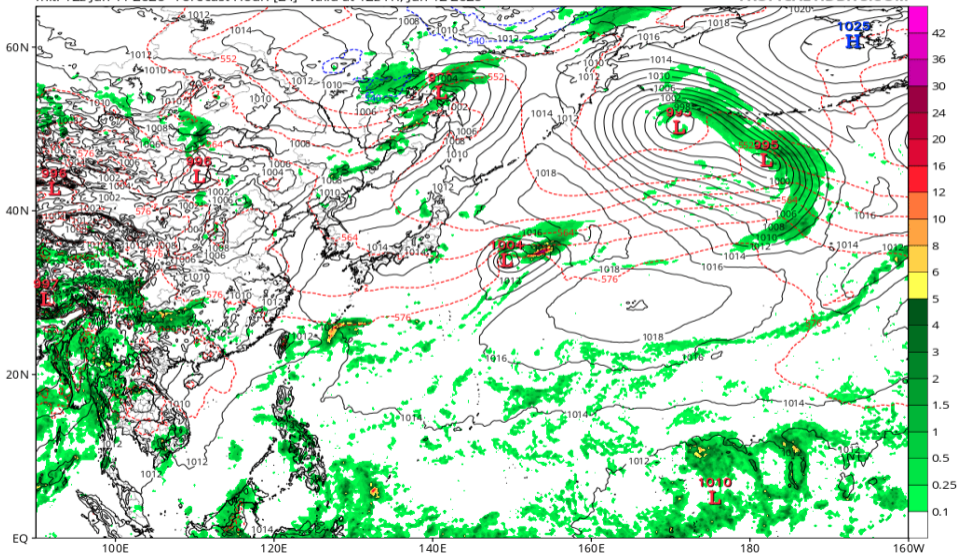


地上気圧配置 (ECMWF 06/12 12Z 予報)

ECMWF Instantaneous Precip Rate (mm/hr), MSLP (hPa) & 1000-500mb Thickness (dam)

Init: 12z Jun 11 2026 Forecast Hour: [24] valid at 12z Fri, Jun 12 2026

TROPICALTIDBITS.COM

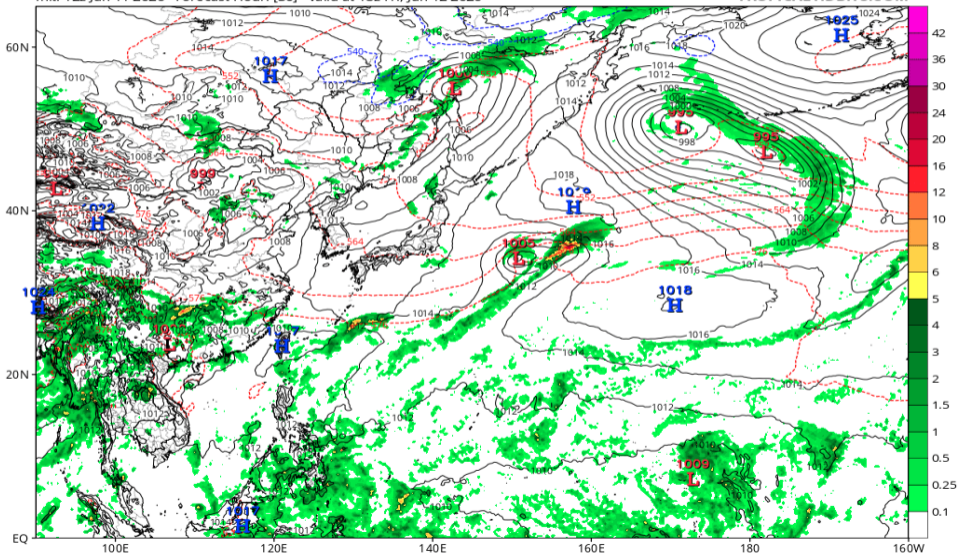


地上気圧配置 (ECMWF 06/12 18Z 予報)

ECMWF Instantaneous Precip Rate (mm/hr), MSLP (hPa) & 1000-500mb Thickness (dam)

Init: 12z Jun 11 2026 Forecast Hour: [30] valid at 18z Fri, Jun 12 2026

TROPICALTIDBITS.COM

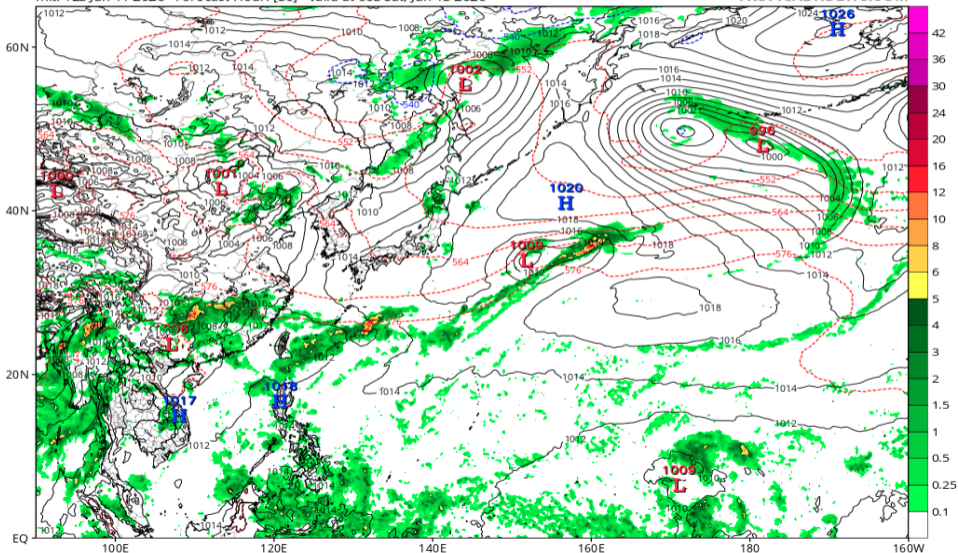


地上気圧配置 (ECMWF 06/13 00Z 予報)

ECMWF Instantaneous Precip Rate (mm/hr), MSLP (hPa) & 1000-500mb Thickness (dam)

Init: 12z Jun 11 2026 Forecast Hour: [36] valid at 00z Sat, Jun 13 2026

TROPICALTIDBITS.COM

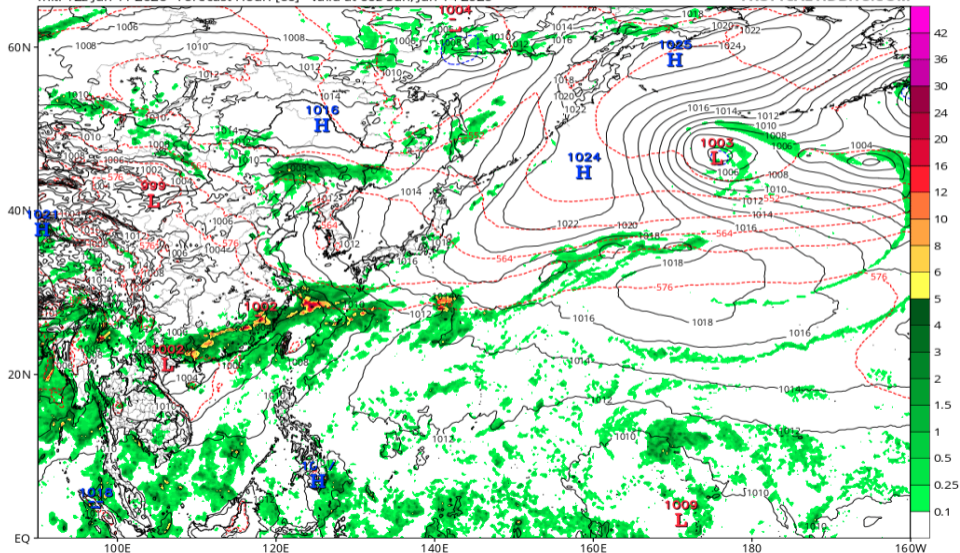


地上気圧配置 (ECMWF 06/14 00Z 予報)

ECMWF Instantaneous Precip Rate (mm/hr), MSLP (hPa) & 1000-500mb Thickness (dam)

Init: 12z Jun 11 2026 Forecast Hour: [60] valid at 00z Sun, Jun 14 2026

TROPICALTIDBITS.COM

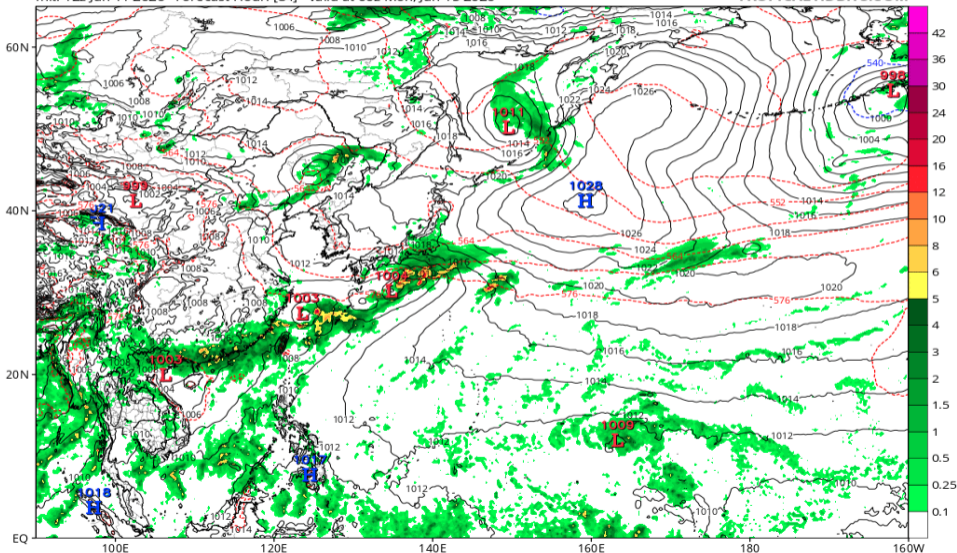


地上気圧配置 (ECMWF 06/15 00Z 予報)

ECMWF Instantaneous Precip Rate (mm/hr), MSLP (hPa) & 1000-500mb Thickness (dam)

Init: 12z Jun 11 2026 Forecast Hour: [84] valid at 00z Mon, Jun 15 2026

TROPICALTIDBITS.COM

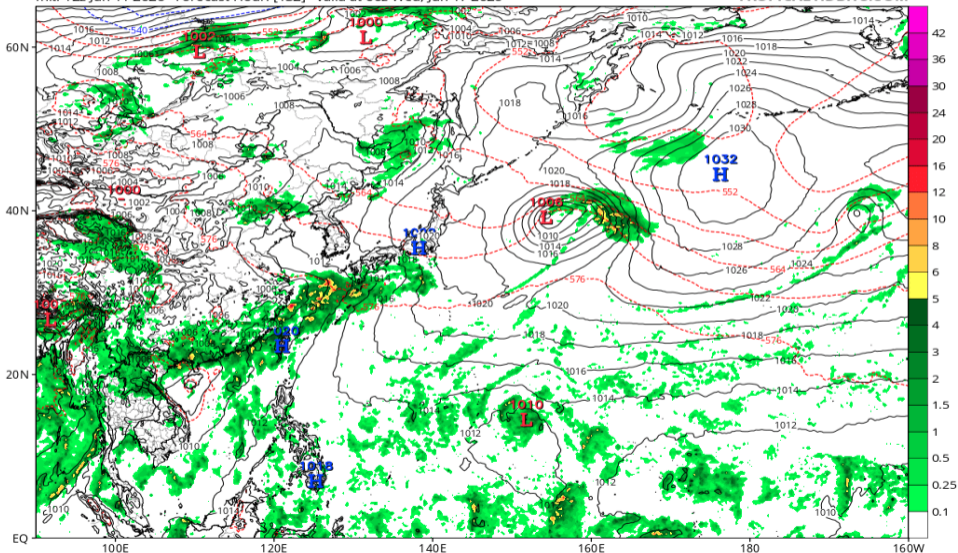


地上気圧配置 (ECMWF 06/17 00Z 予報)

ECMWF Instantaneous Precip Rate (mm/hr), MSLP (hPa) & 1000-500mb Thickness (dam)

Init: 12z Jun 11 2026 Forecast Hour: [132] valid at 00z Wed, Jun 17 2026

TROPICALTIDBITS.COM

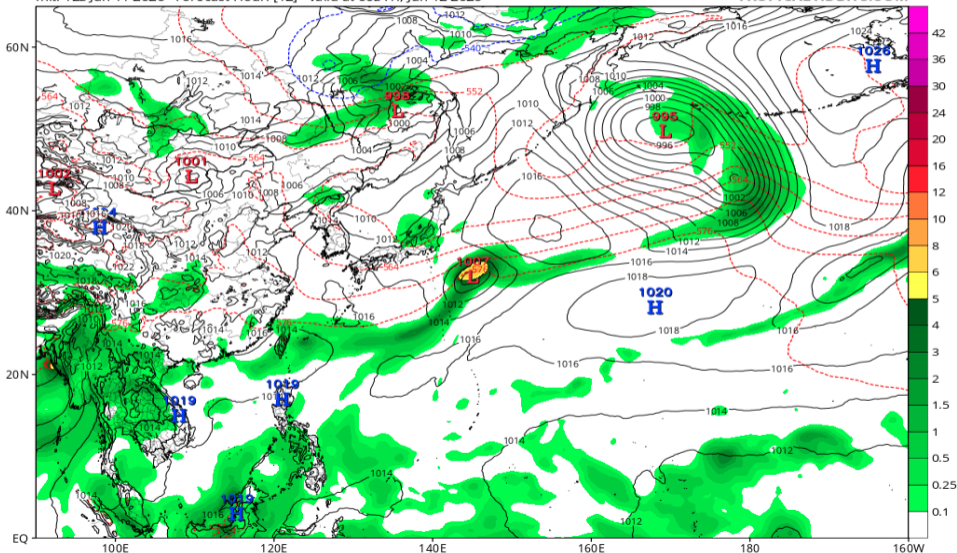


地上気圧配置 (AIFS 06/12 00Z 予報)

EC-AIFS 6-hour Averaged Precip Rate (mm/hr), MSLP (hPa) & 1000-500mb Thickness (dam)

Init: 12z Jun 11 2026 Forecast Hour: [12] valid at 00z Fri, Jun 12 2026

TROPICALTIDBITS.COM

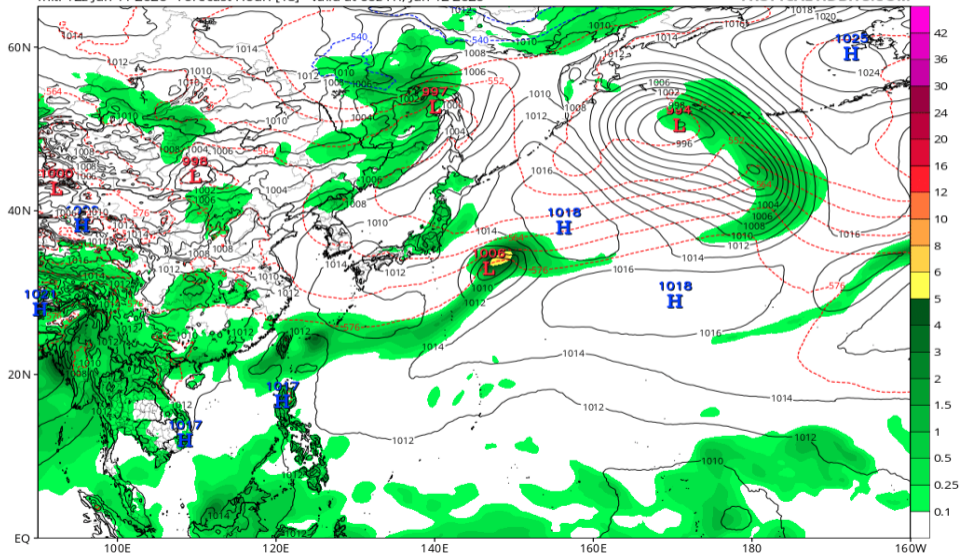


地上気圧配置 (AIFS 06/12 06Z 予報)

EC-AIFS 6-hour Averaged Precip Rate (mm/hr), MSLP (hPa) & 1000-500mb Thickness (dam)

Init: 12z Jun 11 2026 Forecast Hour: [18] valid at 06z Fri, Jun 12 2026

TROPICALTIDBITS.COM

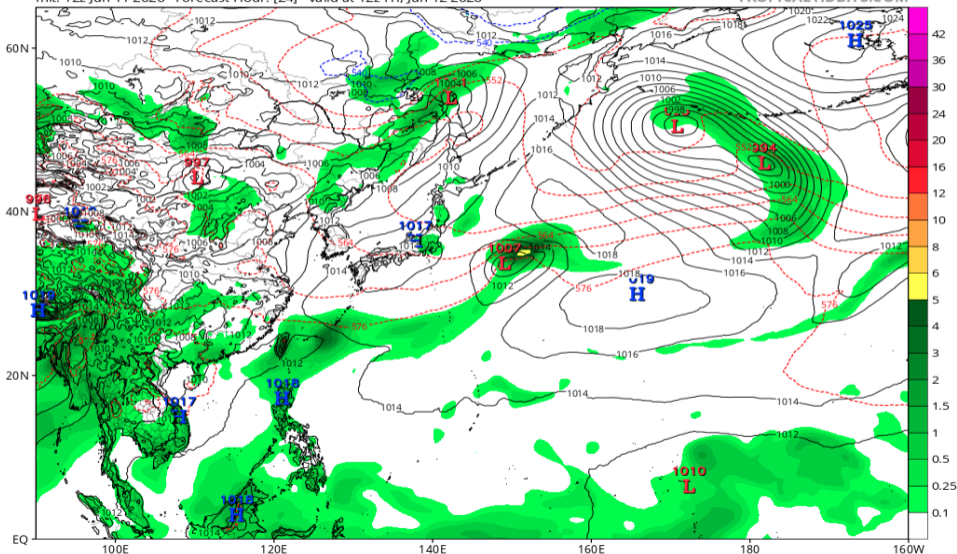


地上気圧配置 (AIFS 06/12 12Z 予報)

EC-AIFS 6-hour Averaged Precip Rate (mm/hr), MSLP (hPa) & 1000-500mb Thickness (dam)

Init: 12z Jun 11 2026 Forecast Hour: [24] valid at 12z Fri, Jun 12 2026

TROPICALTIDBITS.COM

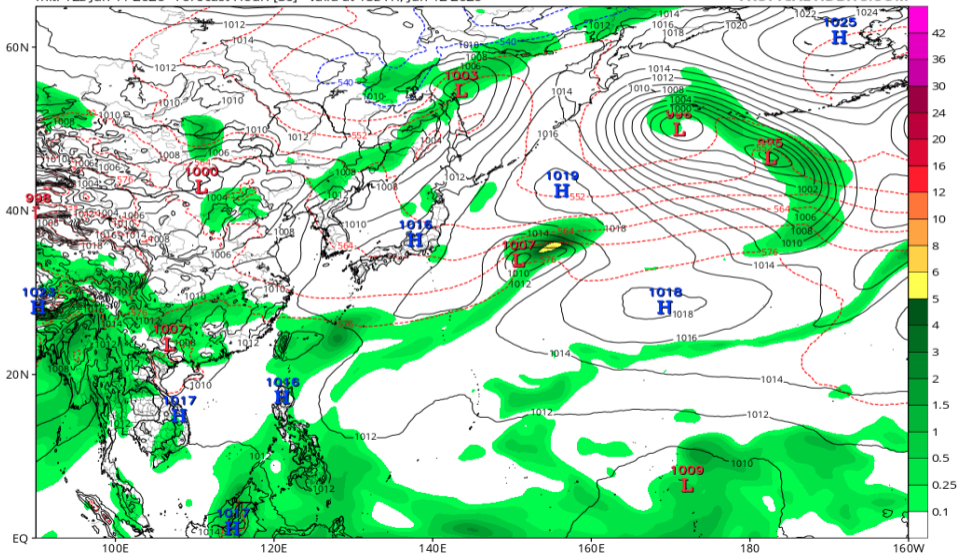


地上気圧配置 (AIFS 06/12 18Z 予報)

EC-AIFS 6-hour Averaged Precip Rate (mm/hr), MSLP (hPa) & 1000-500mb Thickness (dam)

Init: 12z Jun 11 2026 Forecast Hour: [30] valid at 18z Fri, Jun 12 2026

TROPICALTIDBITS.COM

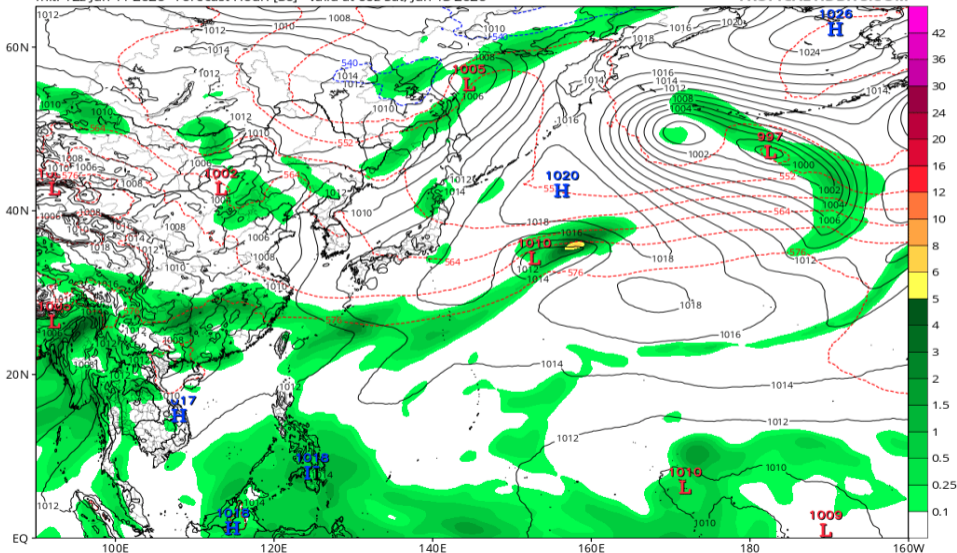


地上気圧配置 (AIFS 06/13 00Z 予報)

EC-AIFS 6-hour Averaged Precip Rate (mm/hr), MSLP (hPa) & 1000-500mb Thickness (dam)

Init: 12z Jun 11 2026 Forecast Hour: [36] valid at 00z Sat, Jun 13 2026

TROPICALTIDBITS.COM

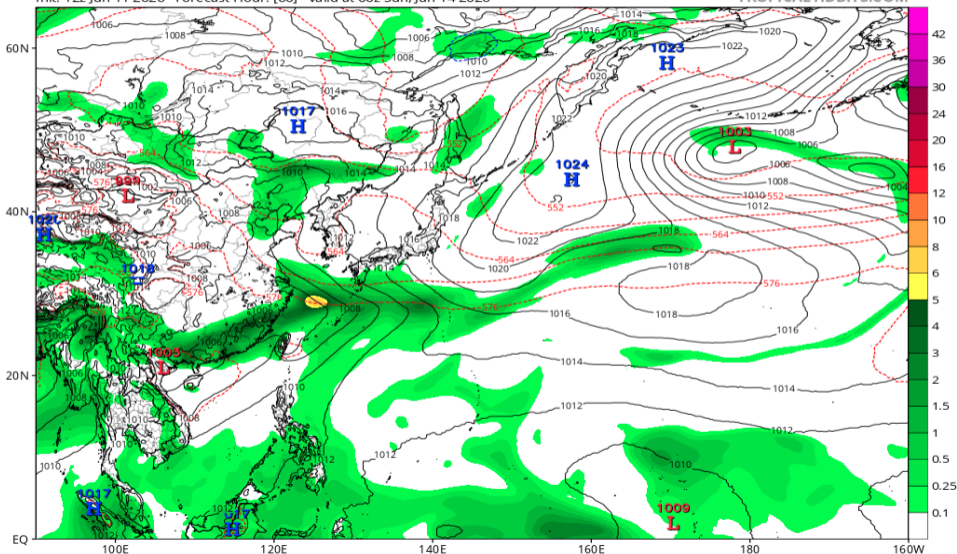


地上気圧配置 (AIFS 06/14 00Z 予報)

EC-AIFS 6-hour Averaged Precip Rate (mm/hr), MSLP (hPa) & 1000-500mb Thickness (dam)

Init: 12z Jun 11 2026 Forecast Hour: [60] valid at 00z Sun, Jun 14 2026

TROPICALTIDBITS.COM

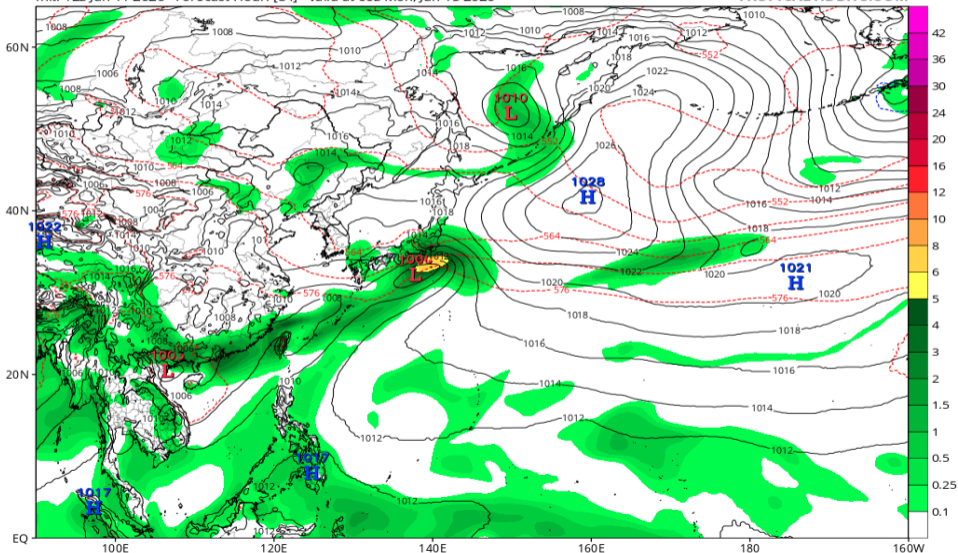


地上気圧配置 (AIFS 06/15 00Z 予報)

EC-AIFS 6-hour Averaged Precip Rate (mm/hr), MSLP (hPa) & 1000-500mb Thickness (dam)

Init: 12z Jun 11 2026 Forecast Hour: [84] valid at 00z Mon, Jun 15 2026

TROPICALTIDBITS.COM

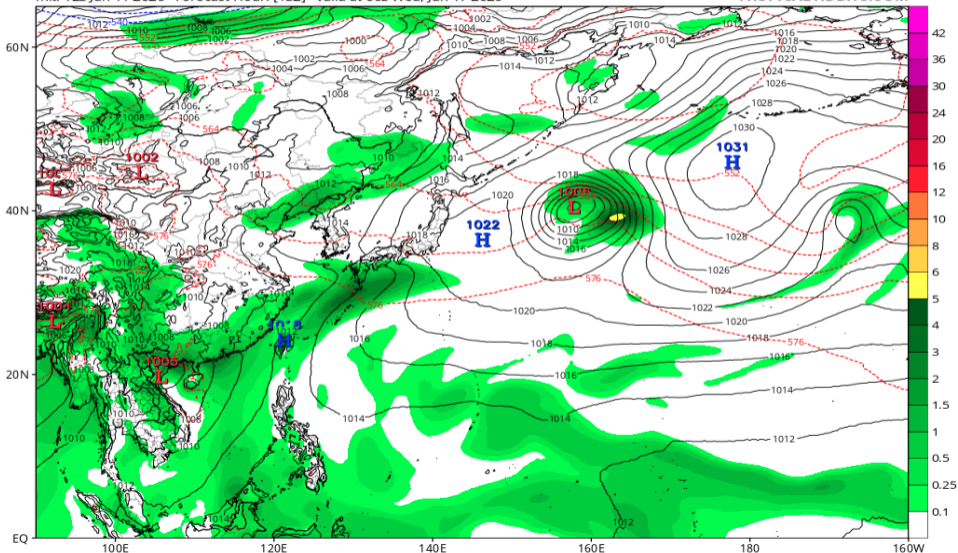


地上気圧配置 (AIFS 06/17 00Z 予報)

EC-AIFS 6-hour Averaged Precip Rate (mm/hr), MSLP (hPa) & 1000-500mb Thickness (dam)

Init: 12z Jun 11 2026 Forecast Hour: [132] valid at 00z Wed, Jun 17 2026

TROPICALTIDBITS.COM

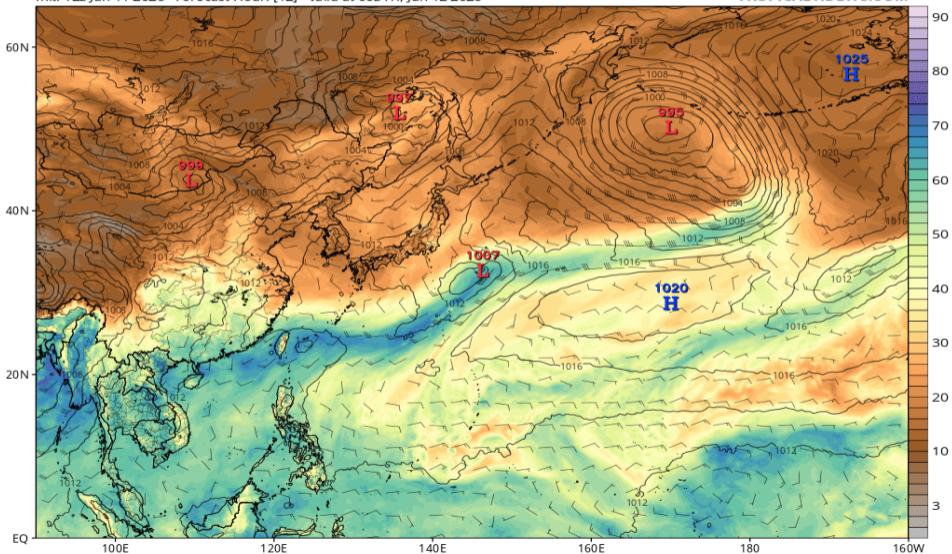


可降水量 (GFS 06/12 00Z 予報)

GFS MSLP (mb), Total Precipitable Water (mm), and 850mb Wind (kt)

Init: 12z Jun 11 2026 Forecast Hour: [12] valid at 00z Fri, Jun 12 2026

TROPICALTIDBITS.COM

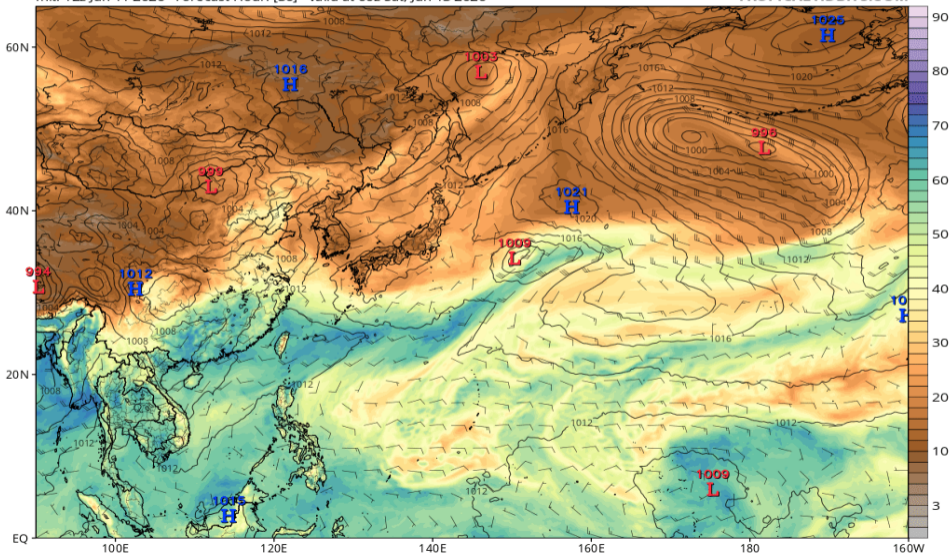


可降水量 (GFS 06/13 00Z 予報)

GFS MSLP (mb), Total Precipitable Water (mm), and 850mb Wind (kt)

Init: 12z Jun 11 2026 Forecast Hour: [36] valid at 00z Sat, Jun 13 2026

TROPICALTIDBITS.COM

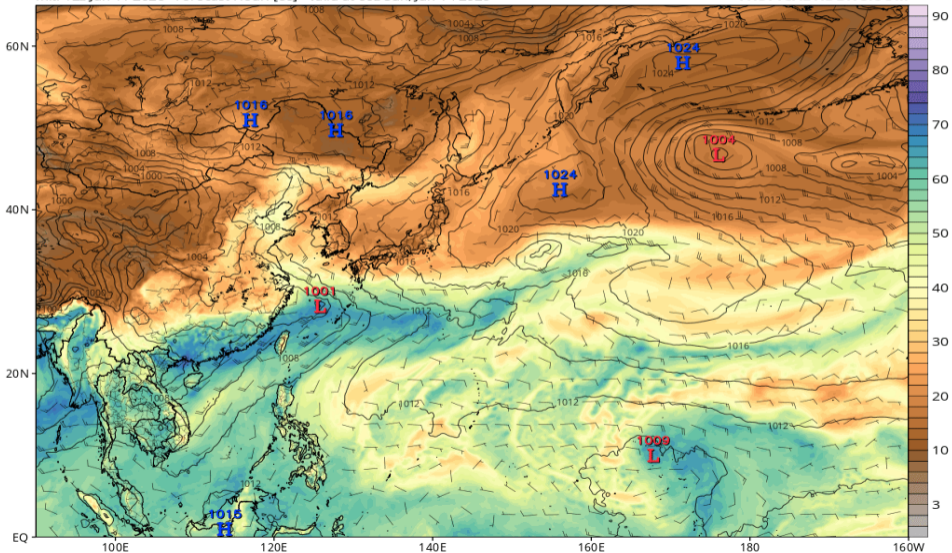


可降水量 (GFS 06/14 00Z 予報)

GFS MSLP (mb), Total Precipitable Water (mm), and 850mb Wind (kt)

Init: 12z Jun 11 2026 Forecast Hour: [60] valid at 00z Sun, Jun 14 2026

TROPICALTIDBITS.COM

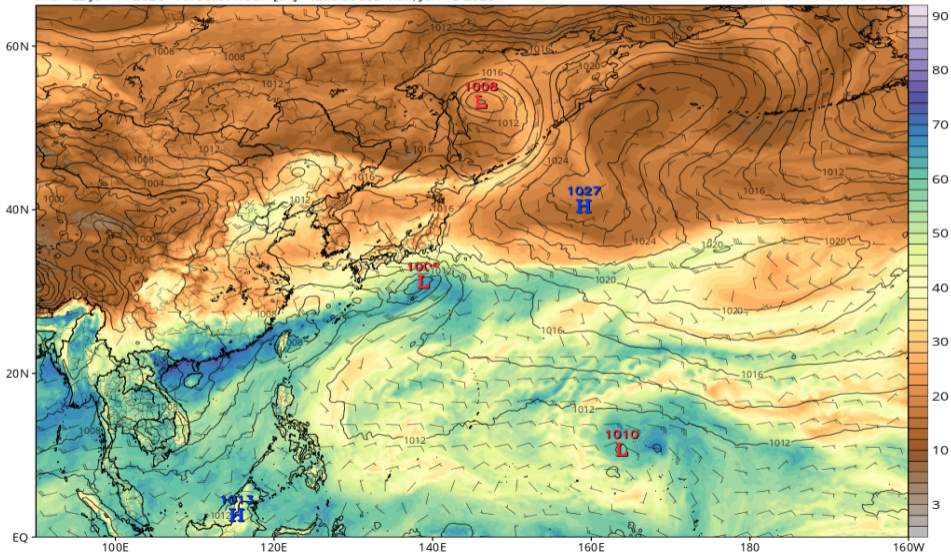


可降水量 (GFS 06/15 00Z 予報)

GFS MSLP (mb), Total Precipitable Water (mm), and 850mb Wind (kt)

Init: 12z Jun 11 2026 Forecast Hour: [84] valid at 00z Mon, Jun 15 2026

TROPICALTIDBITS.COM

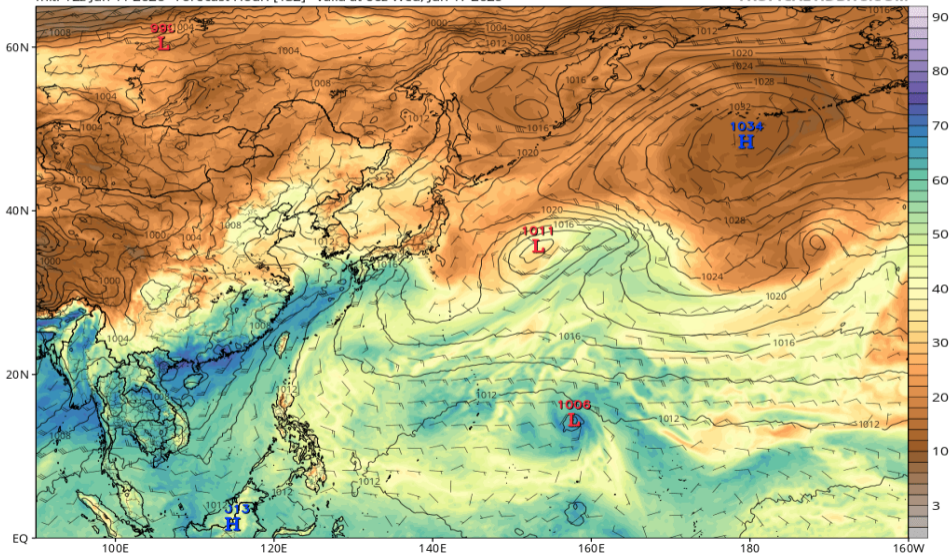


可降水量 (GFS 06/17 00Z 予報)

GFS MSLP (mb), Total Precipitable Water (mm), and 850mb Wind (kt)

Init: 12z Jun 11 2026 Forecast Hour: [132] valid at 00z Wed, Jun 17 2026

TROPICALTIDBITS.COM

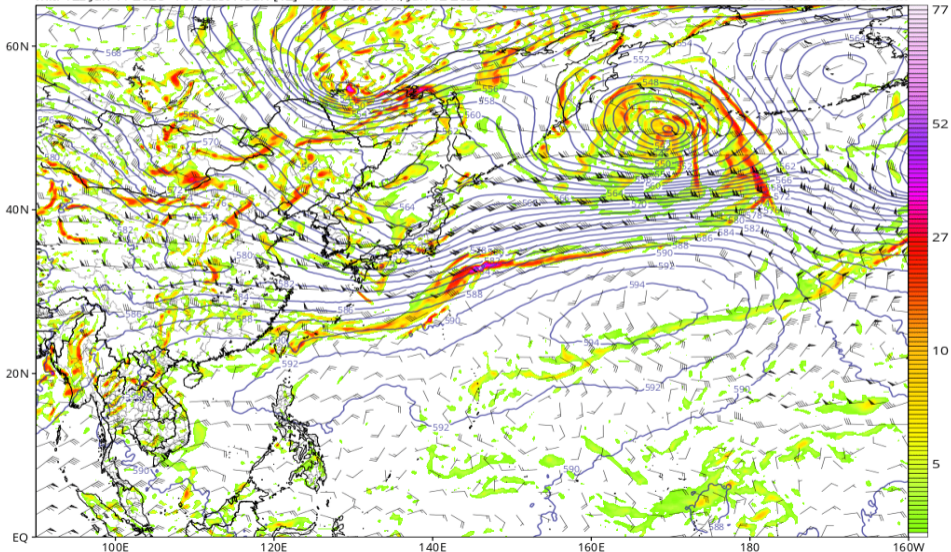


渦度 850, Z500, UV200 (GFS 06/12 00Z 予報)

GFS 850 hPa Cyclonic Vorticity (10^5 s^{-1}), 500 hPa Height (dam), and 200 hPa Wind (kt)

Init: 12z Jun 11 2026 Forecast Hour: [12] valid at 00z Fri, Jun 12 2026

TROPICALTIDBITS.COM

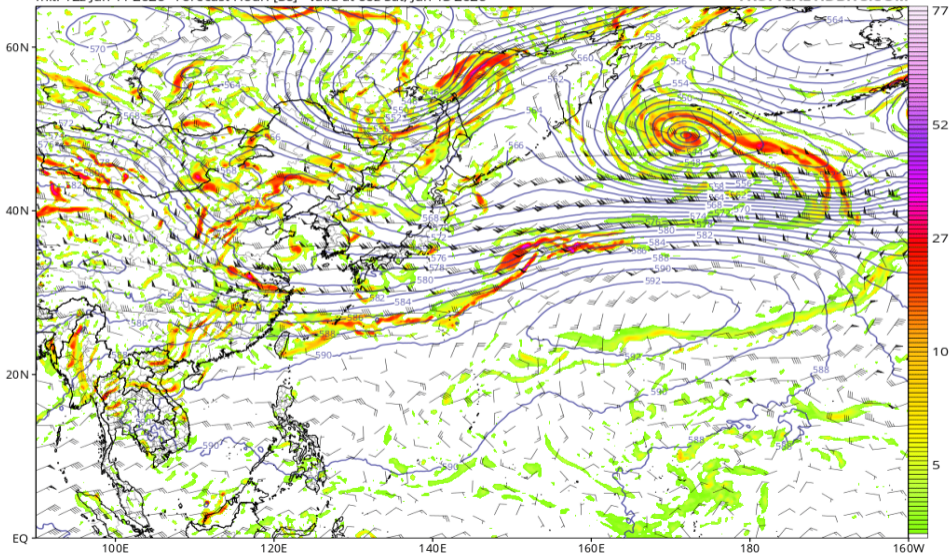


渦度 850, Z500, UV200 (GFS 06/13 00Z 予報)

GFS 850 hPa Cyclonic Vorticity (10^5 s^{-1}), 500 hPa Height (dam), and 200 hPa Wind (kt)

Init: 12z Jun 11 2026 Forecast Hour: [36] valid at 00z Sat, Jun 13 2026

TROPICALTIDBITS.COM

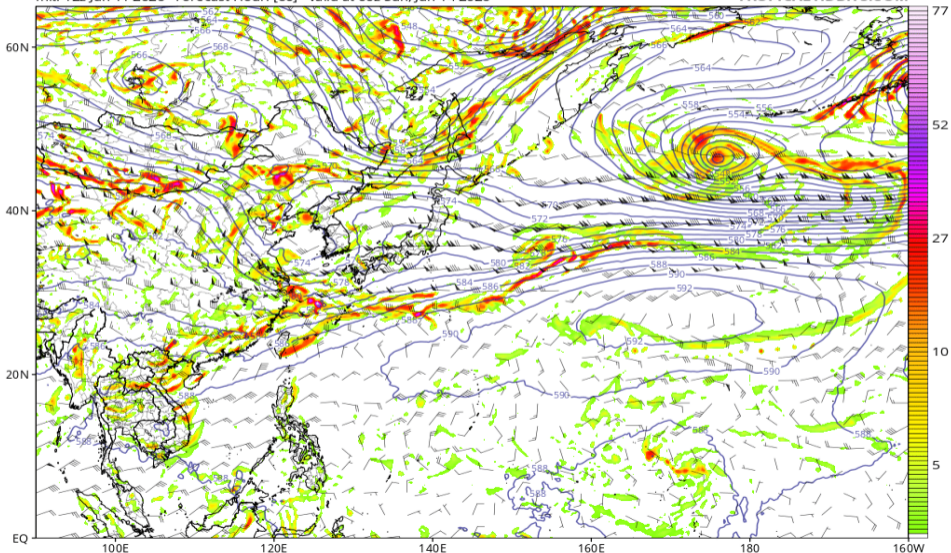


渦度 850, Z500, UV200 (GFS 06/14 00Z 予報)

GFS 850 hPa Cyclonic Vorticity (10^5 s^{-1}), 500 hPa Height (dam), and 200 hPa Wind (kt)

Init: 12z Jun 11 2026 Forecast Hour: [60] valid at 00z Sun, Jun 14 2026

TROPICALTIDBITS.COM

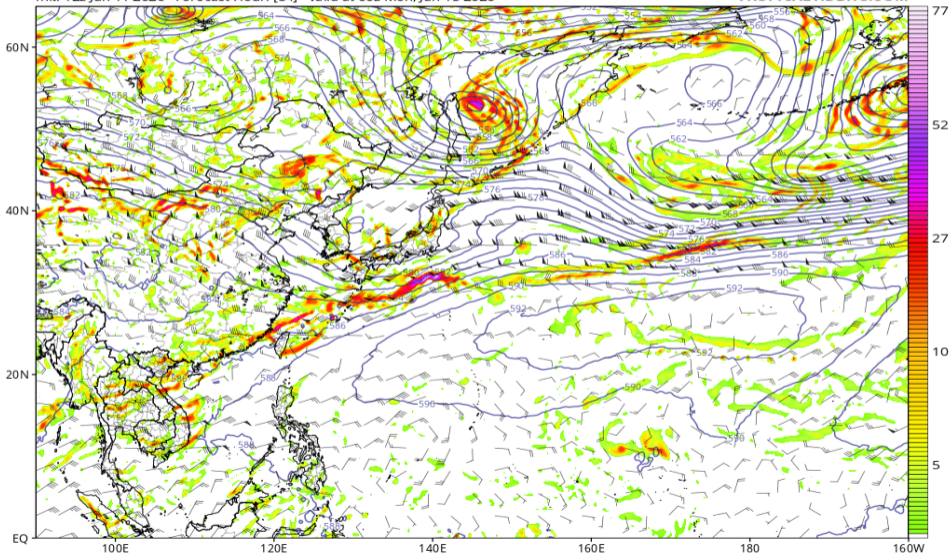


渦度 850, Z500, UV200 (GFS 06/15 00Z 予報)

GFS 850 hPa Cyclonic Vorticity (10^5 s^{-1}), 500 hPa Height (dam), and 200 hPa Wind (kt)

Init: 12z Jun 11 2026 Forecast Hour: [84] valid at 00z Mon, Jun 15 2026

TROPICALTIDBITS.COM

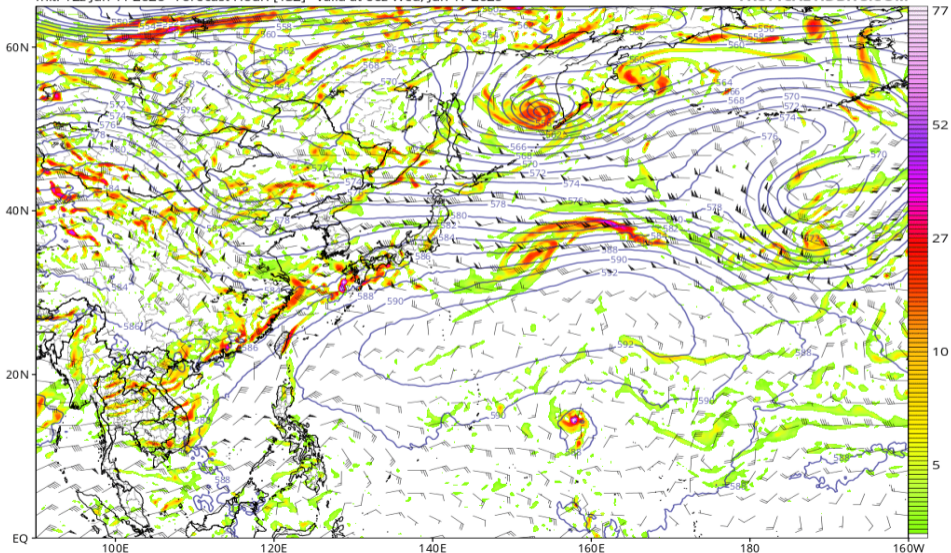


渦度 850, Z500, UV200 (GFS 06/17 00Z 予報)

GFS 850 hPa Cyclonic Vorticity (10^5 s^{-1}), 500 hPa Height (dam), and 200 hPa Wind (kt)

Init: 12z Jun 11 2026 Forecast Hour: [132] valid at 00z Wed, Jun 17 2026

TROPICALTIDBITS.COM

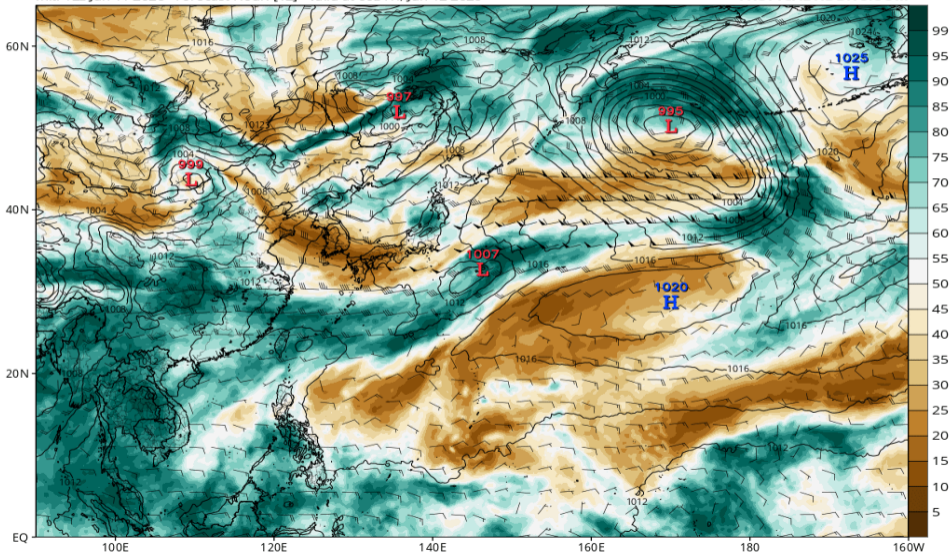


RH700-300 (GFS 06/12 00Z 予報)

GFS MSLP (mb), 700-300 hPa Relative Humidity (%), and 700-300 hPa Wind (kt)

Init: 12z Jun 11 2026 Forecast Hour: [12] valid at 00z Fri, Jun 12 2026

TROPICALTIDBITS.COM

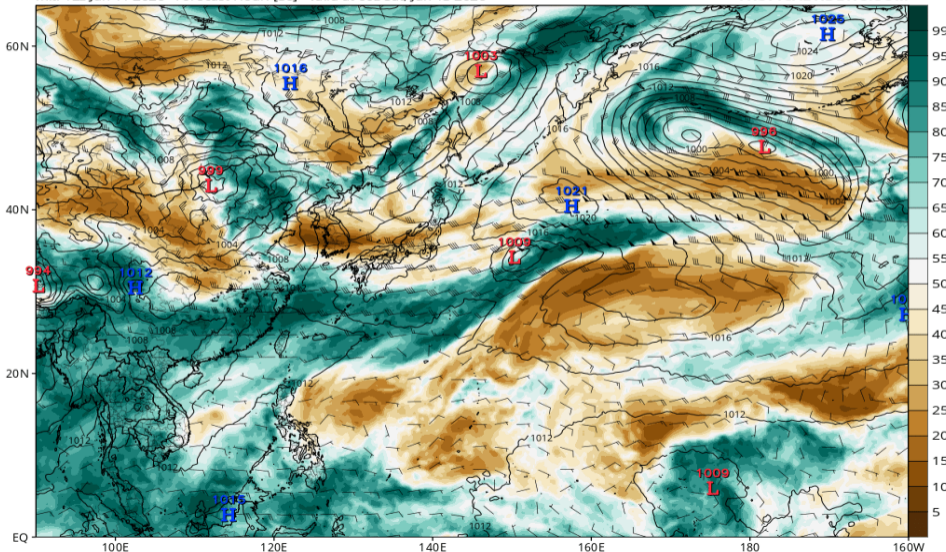


RH700-300 (GFS 06/13 00Z 予報)

GFS MSLP (mb), 700-300 hPa Relative Humidity (%), and 700-300 hPa Wind (kt)

Init: 12z Jun 11 2026 Forecast Hour: [36] valid at 00z Sat, Jun 13 2026

TROPICALTIDBITS.COM

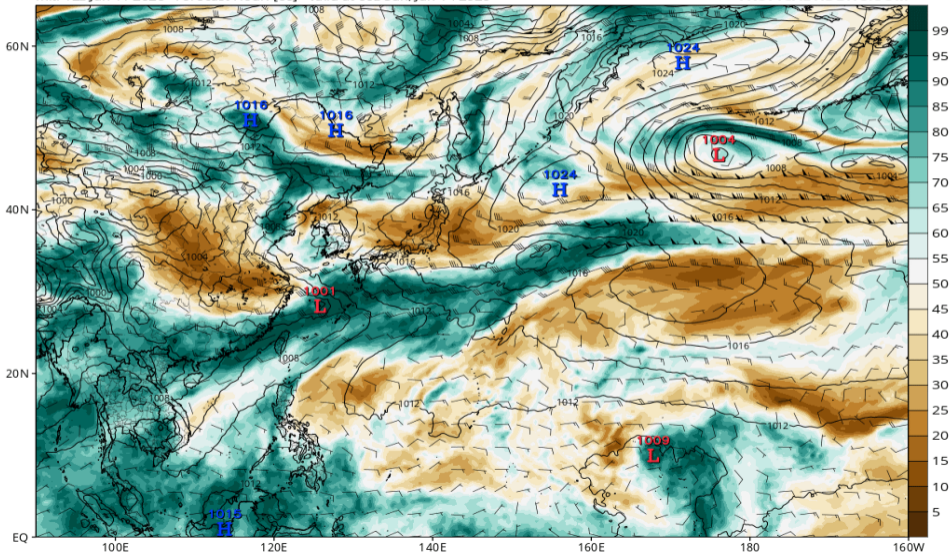


RH700-300 (GFS 06/14 00Z 予報)

GFS MSLP (mb), 700-300 hPa Relative Humidity (%), and 700-300 hPa Wind (kt)

Init: 12z Jun 11 2026 Forecast Hour: [60] valid at 00z Sun, Jun 14 2026

TROPICALTIDBITS.COM

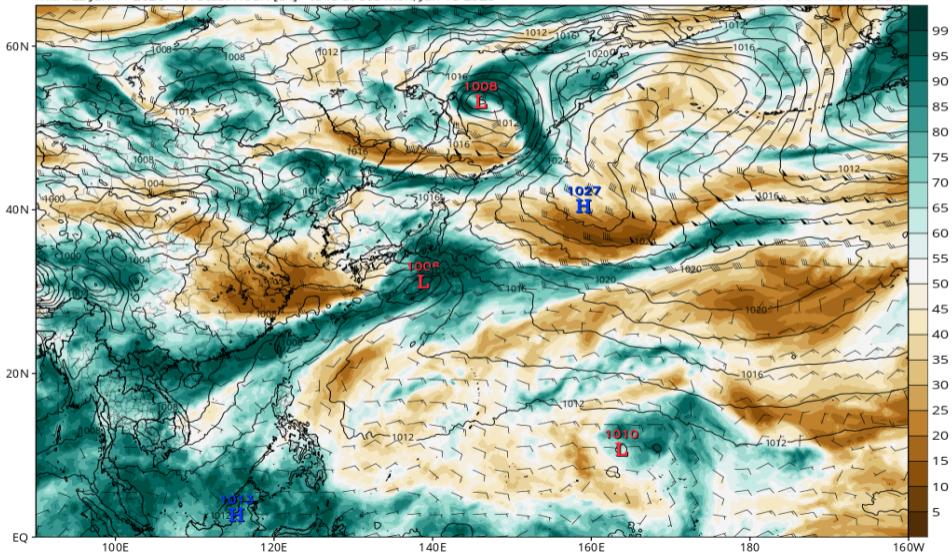


RH700-300 (GFS 06/15 00Z 予報)

GFS MSLP (mb), 700-300 hPa Relative Humidity (%), and 700-300 hPa Wind (kt)

Init: 12z Jun 11 2026 Forecast Hour: [84] valid at 00z Mon, Jun 15 2026

TROPICALTIDBITS.COM

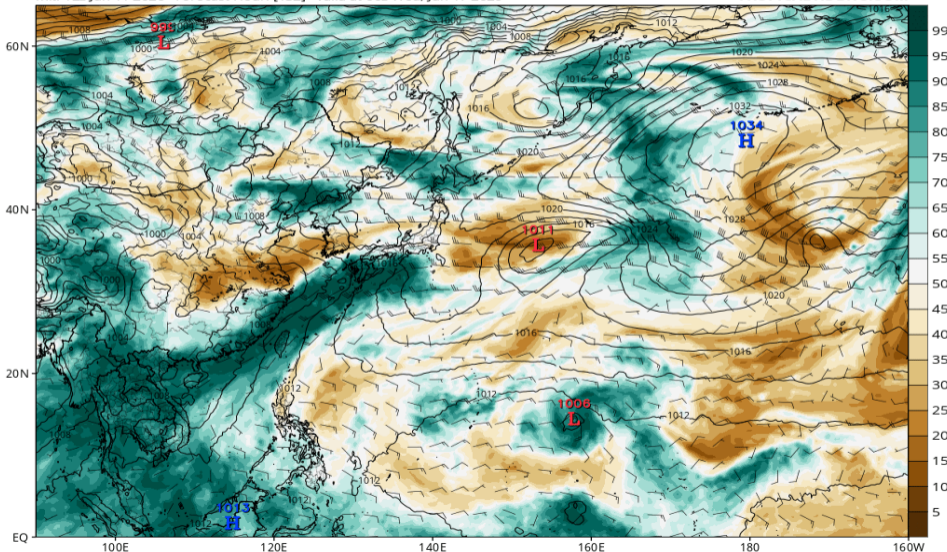


RH700-300 (GFS 06/17 00Z 予報)

GFS MSLP (mb), 700-300 hPa Relative Humidity (%), and 700-300 hPa Wind (kt)

Init: 12z Jun 11 2026 Forecast Hour: [132] valid at 00z Wed, Jun 17 2026

TROPICALTIDBITS.COM

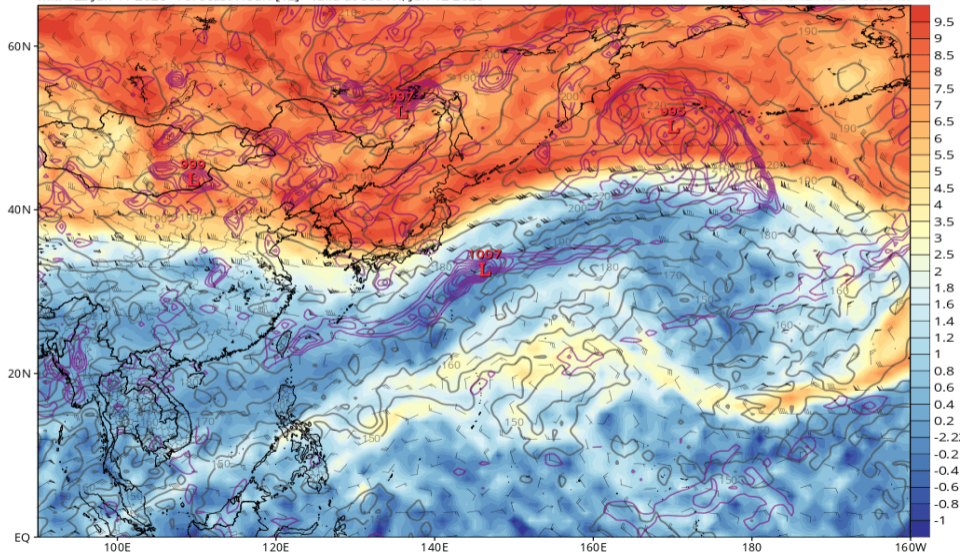


渦位 355K (GFS 06/12 00Z 予報)

GFS 355K Cyclonic PV (PVU), Wind (kt), Pressure (hPa, gray), & 850 hPa Cyclonic Vorticity (purple) [1.0°x1.0° grid]

Init: 12z Jun 11 2026 Forecast Hour: [12] valid at 00z Fri, Jun 12 2026

TROPICALTIDBITS.COM

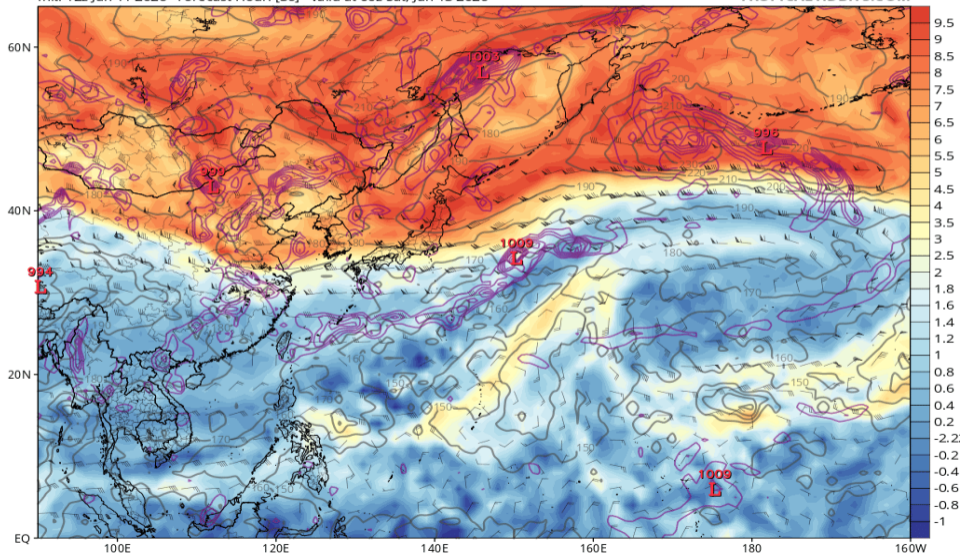


渦位 355K (GFS 06/13 00Z 予報)

GFS 355K Cyclonic PV (PVU), Wind (kt), Pressure (hPa, gray), & 850 hPa Cyclonic Vorticity (purple) [1.0°x1.0° grid]

Init: 12z Jun 11 2026 Forecast Hour: [36] valid at 00z Sat, Jun 13 2026

TROPICALTIDBITS.COM

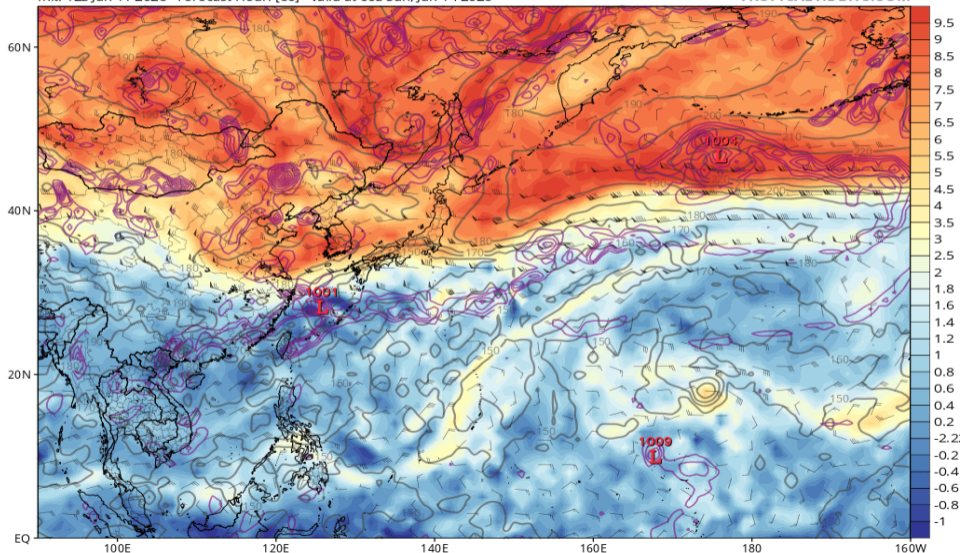


渦位 355K (GFS 06/14 00Z 予報)

GFS 355K Cyclonic PV (PVU), Wind (kt), Pressure (hPa, gray), & 850 hPa Cyclonic Vorticity (purple) [1.0°x1.0° grid]

Init: 12z Jun 11 2026 Forecast Hour: [60] valid at 00z Sun, Jun 14 2026

TROPICALTIDBITS.COM

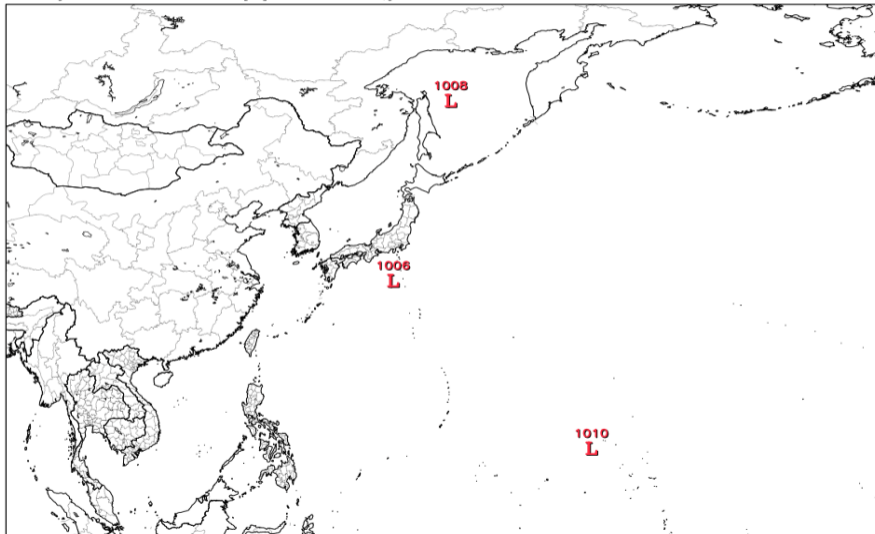


渦位 355K (GFS 06/15 00Z 予報)

GFS 355K Cyclonic PV (PVU), Wind (kt), Pressure (hPa, gray), & 850 hPa Cyclonic Vorticity (purple) [1.0°x1.0° grid]

Init: 12z Jun 11 2026 Forecast Hour: [84] valid at 00z Mon, Jun 15 2026

TROPICALTIDBITS.COM

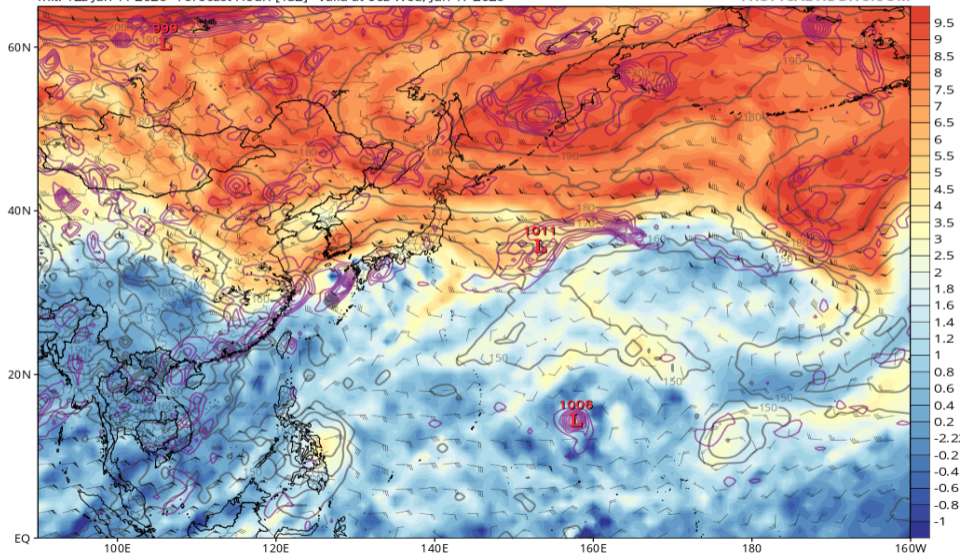


渦位 355K (GFS 06/17 00Z 予報)

GFS 355K Cyclonic PV (PVU), Wind (kt), Pressure (hPa, gray), & 850 hPa Cyclonic Vorticity (purple) [1.0°x1.0° grid]

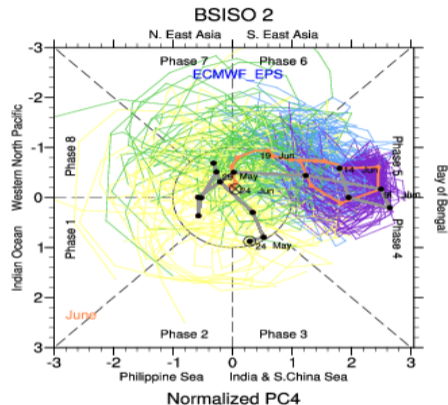
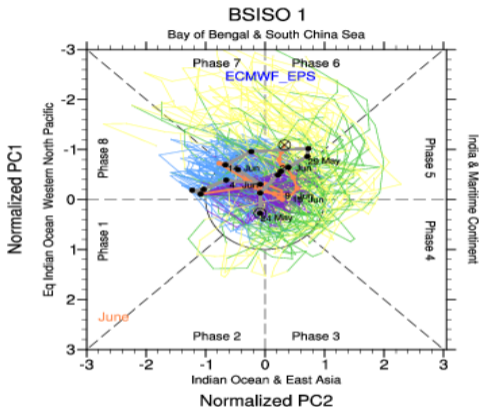
Init: 12z Jun 11 2026 Forecast Hour: [132] valid at 00z Wed, Jun 17 2026

TROPICALTIDBITS.COM



BSISO 予測 (ECMWFens 06/08 初期)

BSISO Forecast for 8-June-2026 to 27-June-2026



Re-analysis

Ensemble Mean

0-4d

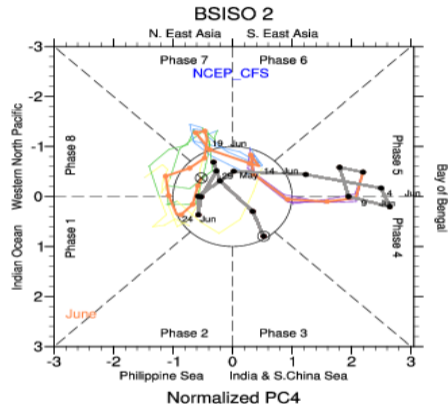
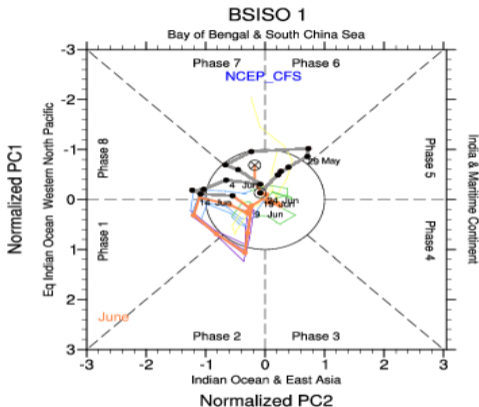
5-9d

10-14d

15-19d

BSISO 予測 (NCEPCFSens 06/08 初期)

BSISO Forecast for 9-June-2026 to 28-June-2026



Re-analysis

Ensemble Mean

0-4d

5-9d

10-14d

15-19d