

## Figures

Some results of DCPAM are compared with MGS<sup>1</sup>-TES<sup>2</sup> and MRO<sup>3</sup>-MCS<sup>4</sup> data.

---

<sup>1</sup>Mars Global Surveyor  
<sup>2</sup>Thermal Emission Spectrometer  
<sup>3</sup>Mars Reconnaissance Orbiter  
<sup>4</sup>Mars Climate Sounder

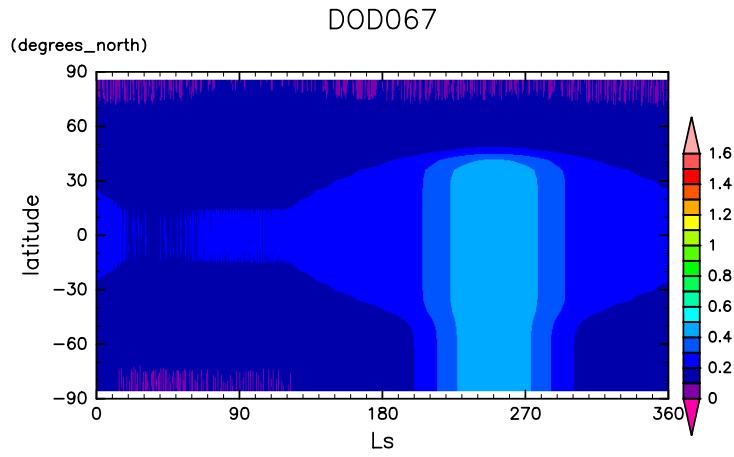


Figure 1: Daily mean dust optical depth prescribed in DCPAM

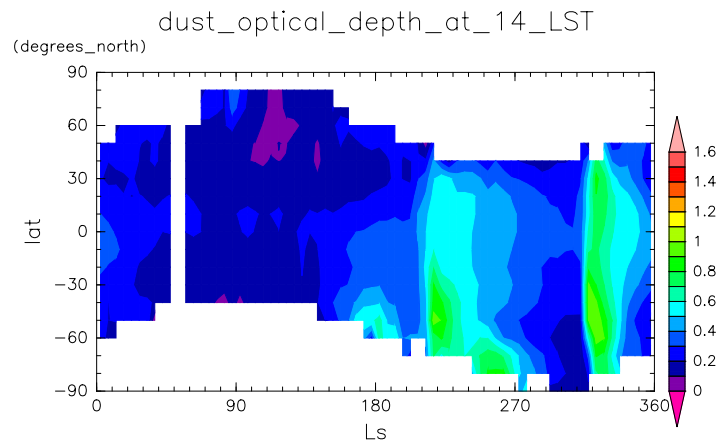


Figure 2: Double of dust optical depth observed by MGS-TES in MY26

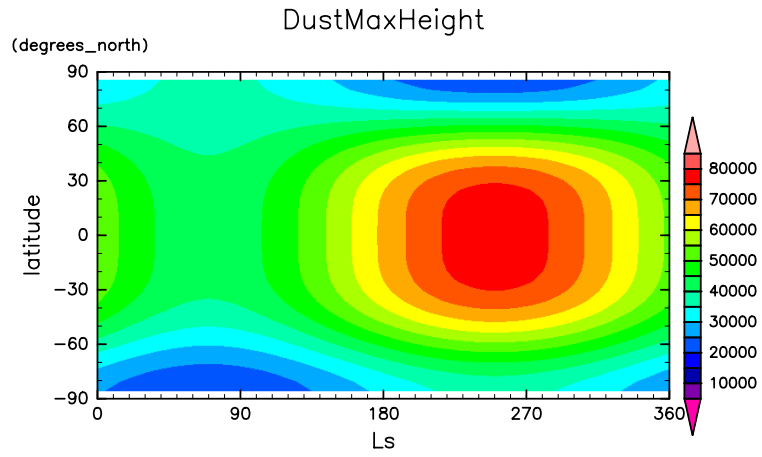


Figure 3: Daily mean maximum height of dust distribution prescribed in DC-PAM

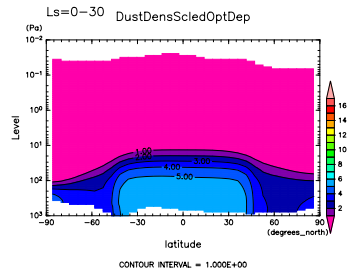


Figure 4: DustDensScledOptDep at  $L_s=0^\circ-30^\circ$  by DCPAM

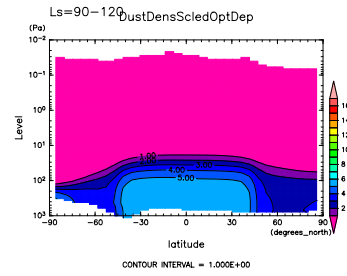


Figure 7: DustDensScledOptDep at  $L_s=90^\circ-120^\circ$  by DCPAM

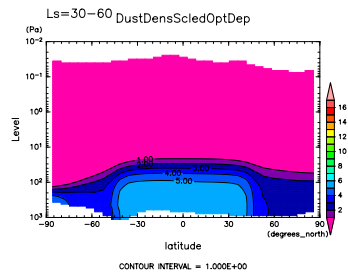


Figure 5: DustDensScledOptDep at  $L_s=30^\circ-60^\circ$  by DCPAM

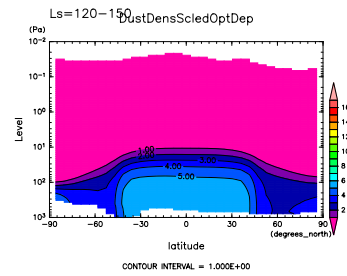


Figure 8: DustDensScledOptDep at  $L_s=120^\circ-150^\circ$  by DCPAM

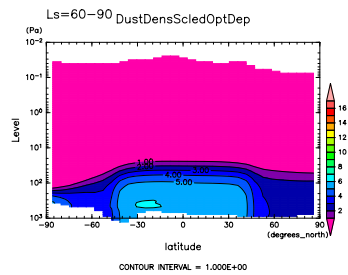


Figure 6: DustDensScledOptDep at  $L_s=60^\circ-90^\circ$  by DCPAM

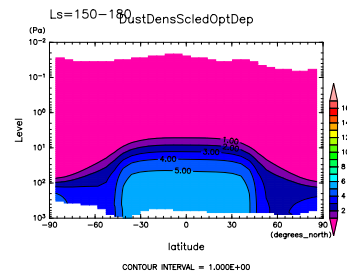


Figure 9: DustDensScledOptDep at  $L_s=150^\circ-180^\circ$  by DCPAM

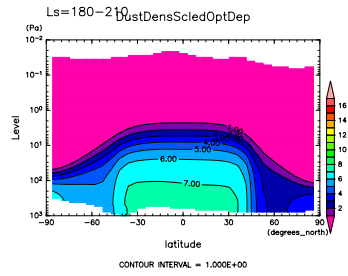


Figure 10: DustDensScledOptDep at  $L_s=180^\circ-210^\circ$  by DCPAM

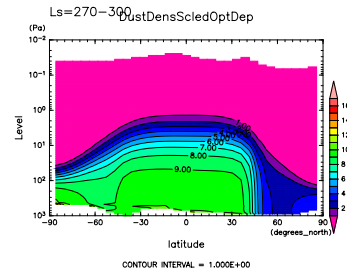


Figure 13: DustDensScledOptDep at  $L_s=270^\circ-300^\circ$  by DCPAM

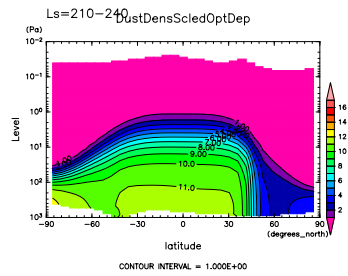


Figure 11: DustDensScledOptDep at  $L_s=210^\circ-240^\circ$  by DCPAM

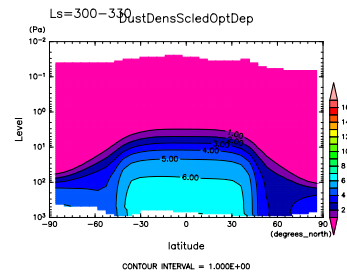


Figure 14: DustDensScledOptDep at  $L_s=300^\circ-330^\circ$  by DCPAM

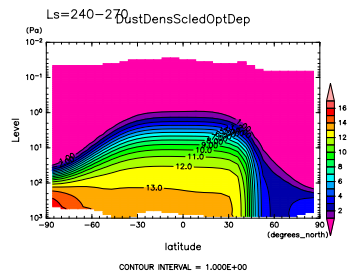


Figure 12: DustDensScledOptDep at  $L_s=240^\circ-270^\circ$  by DCPAM

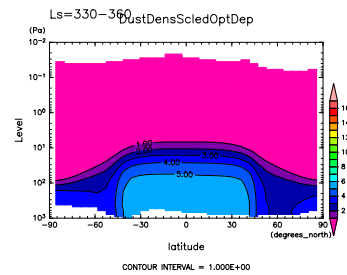


Figure 15: DustDensScledOptDep at  $L_s=330^\circ-360^\circ$  by DCPAM

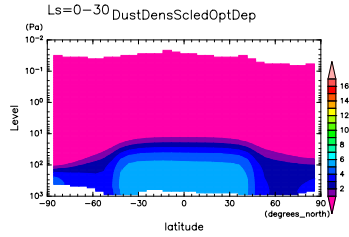


Figure 16: DustDensScledOptDep at 03 LST and  $Ls=0^{\circ}-30^{\circ}$  by DCPAM

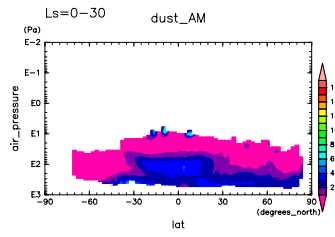


Figure 19: DustDensScledOptDep at 03 LST and  $Ls=0^{\circ}-30^{\circ}$  by MRO

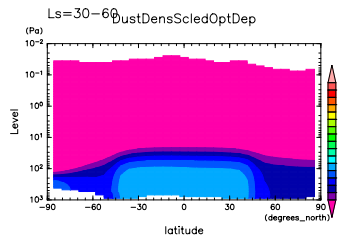


Figure 17: DustDensScledOptDep at 03 LST and  $Ls=30^{\circ}-60^{\circ}$  by DCPAM

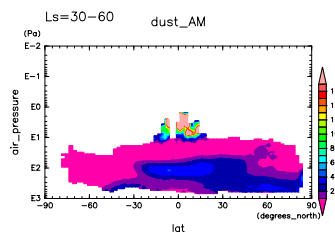


Figure 20: DustDensScledOptDep at 03 LST and  $Ls=30^{\circ}-60^{\circ}$  by MRO

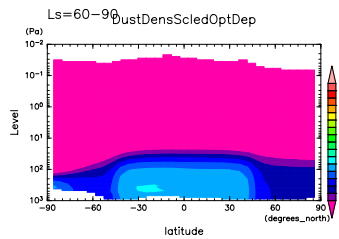


Figure 18: DustDensScledOptDep at 03 LST and  $Ls=60^{\circ}-90^{\circ}$  by DCPAM

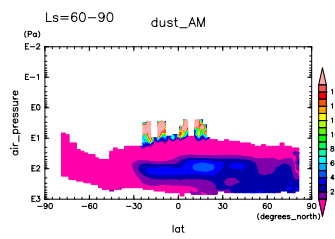


Figure 21: DustDensScledOptDep at 03 LST and  $Ls=60^{\circ}-90^{\circ}$  by MRO

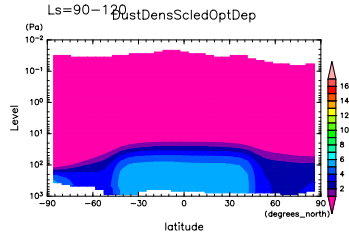


Figure 22: DustDensScledOptDep at 03 LST and  $Ls=90^{\circ}$ - $120^{\circ}$  by DCPAM

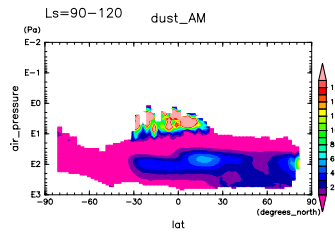


Figure 25: DustDensScledOptDep at 03 LST and  $Ls=90^{\circ}$ - $120^{\circ}$  by MRO

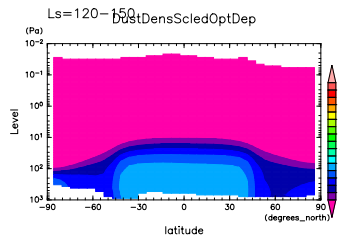


Figure 23: DustDensScledOptDep at 03 LST and  $Ls=120^{\circ}$ - $150^{\circ}$  by DCPAM

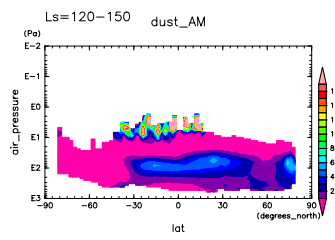


Figure 26: DustDensScledOptDep at 03 LST and  $Ls=120^{\circ}$ - $150^{\circ}$  by MRO

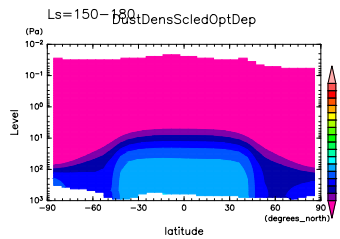


Figure 24: DustDensScledOptDep at 03 LST and  $Ls=150^{\circ}$ - $180^{\circ}$  by DCPAM

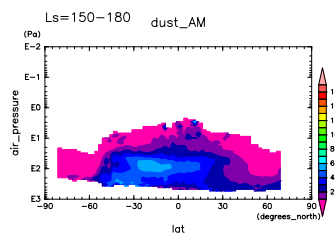


Figure 27: DustDensScledOptDep at 03 LST and  $Ls=150^{\circ}$ - $180^{\circ}$  by MRO

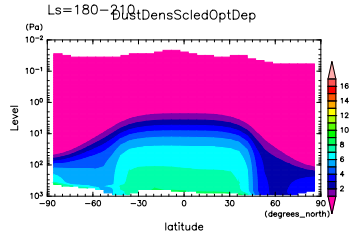


Figure 28: DustDensScledOptDep at 03 LST and  $L_s=180^\circ-210^\circ$  by DCPAM

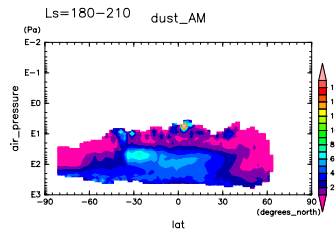


Figure 31: DustDensScledOptDep at 03 LST and  $L_s=180^\circ-210^\circ$  by MRO

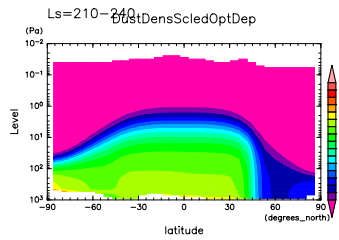


Figure 29: DustDensScledOptDep at 03 LST and  $L_s=210^\circ-240^\circ$  by DCPAM

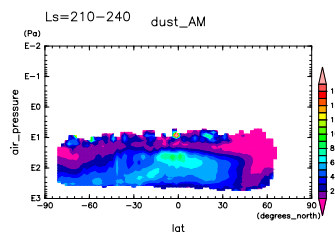


Figure 32: DustDensScledOptDep at 03 LST and  $L_s=210^\circ-240^\circ$  by MRO

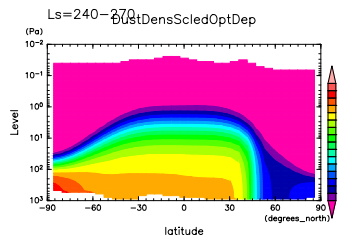


Figure 30: DustDensScledOptDep at 03 LST and  $L_s=240^\circ-270^\circ$  by DCPAM

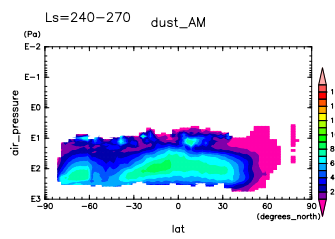


Figure 33: DustDensScledOptDep at 03 LST and  $L_s=240^\circ-270^\circ$  by MRO



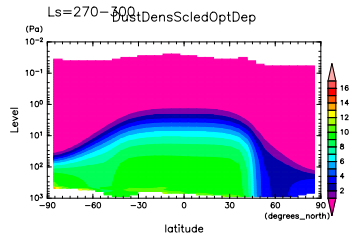


Figure 34: DustDensScledOptDep at 03 LST and Ls=270°-300° by DCPAM

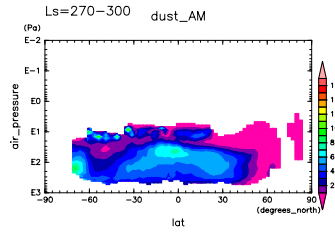


Figure 37: DustDensScledOptDep at 03 LST and Ls=270°-300° by MRO

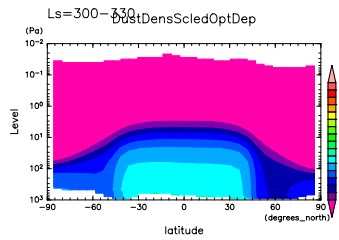


Figure 35: DustDensScledOptDep at 03 LST and Ls=300°-330° by DCPAM

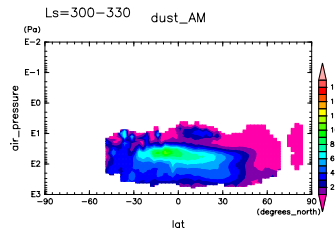


Figure 38: DustDensScledOptDep at 03 LST and Ls=300°-330° by MRO

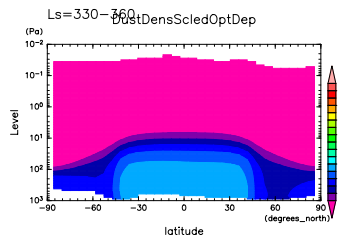


Figure 36: DustDensScledOptDep at 03 LST and Ls=330°-360° by DCPAM

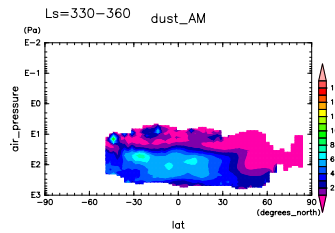


Figure 39: DustDensScledOptDep at 03 LST and Ls=330°-360° by MRO

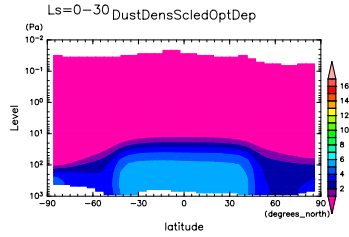


Figure 40: DustDensScledOptDep at 15 LST and  $Ls=0^{\circ}-30^{\circ}$  by DCPAM

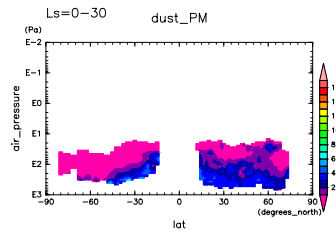


Figure 43: DustDensScledOptDep at 15 LST and  $Ls=0^{\circ}-30^{\circ}$  by MRO

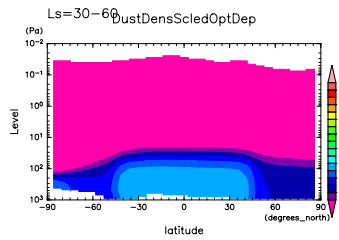


Figure 41: DustDensScledOptDep at 15 LST and  $Ls=30^{\circ}-60^{\circ}$  by DCPAM

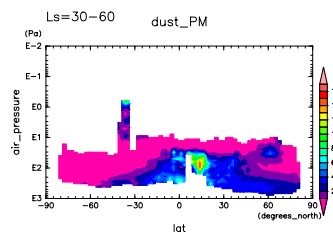


Figure 44: DustDensScledOptDep at 15 LST and  $Ls=30^{\circ}-60^{\circ}$  by MRO

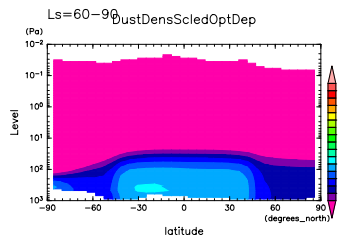


Figure 42: DustDensScledOptDep at 15 LST and  $Ls=60^{\circ}-90^{\circ}$  by DCPAM

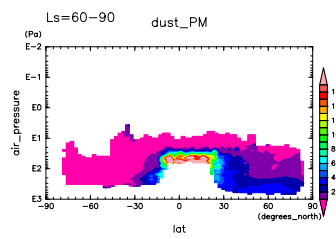


Figure 45: DustDensScledOptDep at 15 LST and  $Ls=60^{\circ}-90^{\circ}$  by MRO

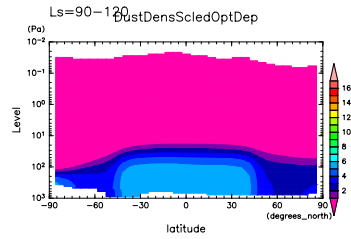


Figure 46: DustDensScledOptDep at 15 LST and  $Ls=90^\circ-120^\circ$  by DCPAM

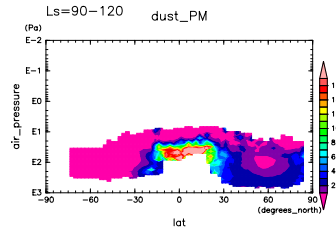


Figure 49: DustDensScledOptDep at 15 LST and  $Ls=90^\circ-120^\circ$  by MRO

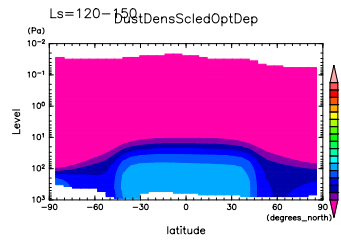


Figure 47: DustDensScledOptDep at 15 LST and  $Ls=120^\circ-150^\circ$  by DCPAM

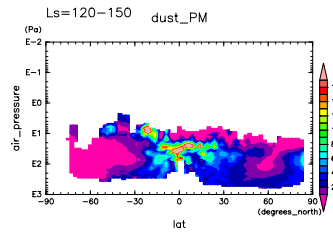


Figure 50: DustDensScledOptDep at 15 LST and  $Ls=120^\circ-150^\circ$  by MRO

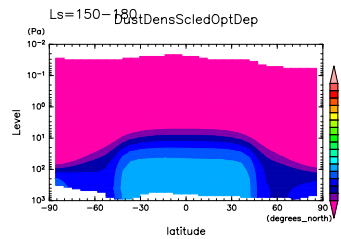


Figure 48: DustDensScledOptDep at 15 LST and  $Ls=150^\circ-180^\circ$  by DCPAM

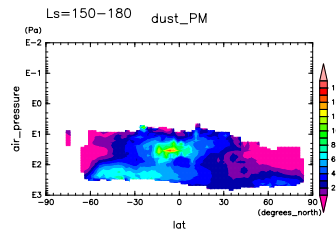


Figure 51: DustDensScledOptDep at 15 LST and  $Ls=150^\circ-180^\circ$  by MRO

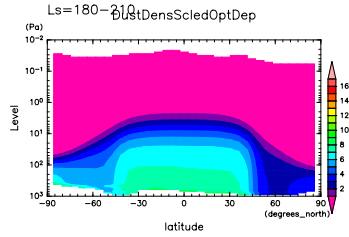


Figure 52: DustDensScledOptDep at 15 LST and  $L_s=180^\circ-210^\circ$  by DCPAM

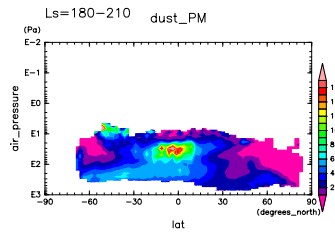


Figure 55: DustDensScledOptDep at 15 LST and  $L_s=180^\circ-210^\circ$  by MRO

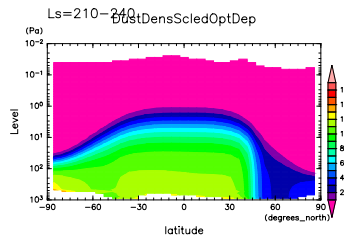


Figure 53: DustDensScledOptDep at 15 LST and  $L_s=210^\circ-240^\circ$  by DCPAM

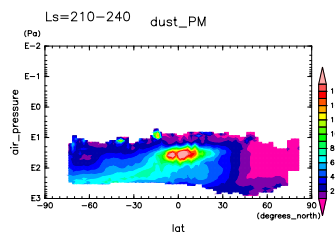


Figure 56: DustDensScledOptDep at 15 LST and  $L_s=210^\circ-240^\circ$  by MRO

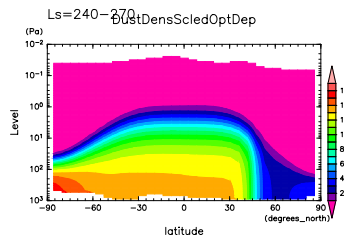


Figure 54: DustDensScledOptDep at 15 LST and  $L_s=240^\circ-270^\circ$  by DCPAM

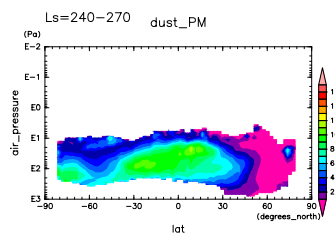


Figure 57: DustDensScledOptDep at 15 LST and  $L_s=240^\circ-270^\circ$  by MRO

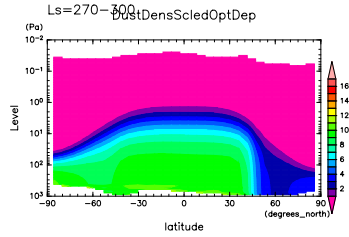


Figure 58: DustDensScledOptDep at 15 LST and  $L_s=270^\circ-300^\circ$  by DCPAM

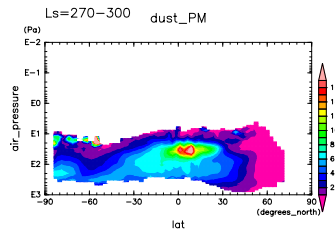


Figure 61: DustDensScledOptDep at 15 LST and  $L_s=270^\circ-300^\circ$  by MRO

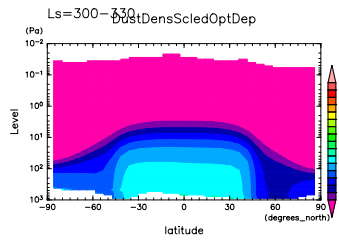


Figure 59: DustDensScledOptDep at 15 LST and  $L_s=300^\circ-330^\circ$  by DCPAM

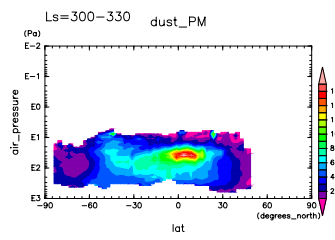


Figure 62: DustDensScledOptDep at 15 LST and  $L_s=300^\circ-330^\circ$  by MRO

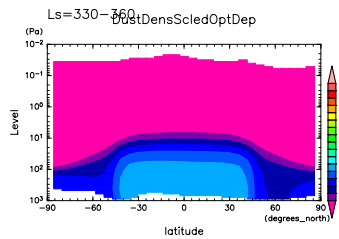


Figure 60: DustDensScledOptDep at 15 LST and  $L_s=330^\circ-360^\circ$  by DCPAM

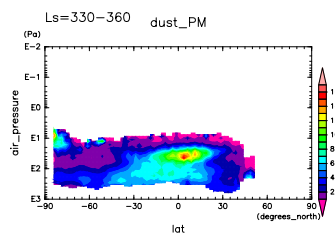


Figure 63: DustDensScledOptDep at 15 LST and  $L_s=330^\circ-360^\circ$  by MRO

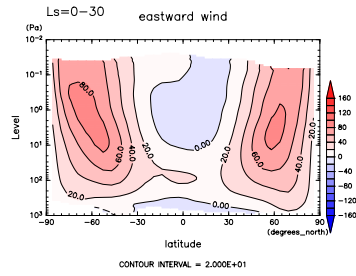


Figure 64: U at  $L_S=0^\circ-30^\circ$  by DC-PAM

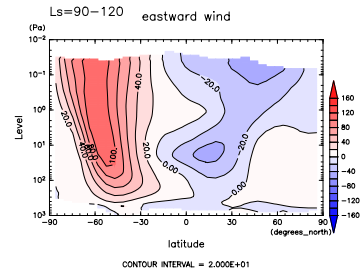


Figure 67: U at  $L_S=90^\circ-120^\circ$  by DC-PAM

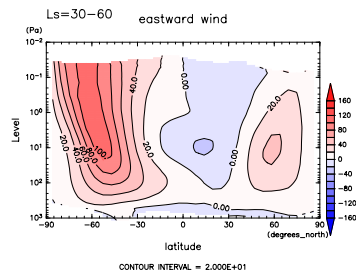


Figure 65: U at  $L_S=30^\circ-60^\circ$  by DC-PAM

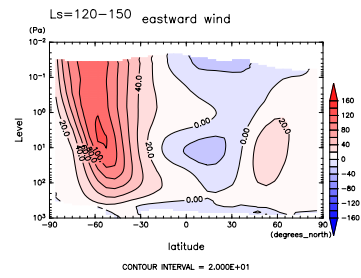


Figure 68: U at  $L_S=120^\circ-150^\circ$  by DC-PAM

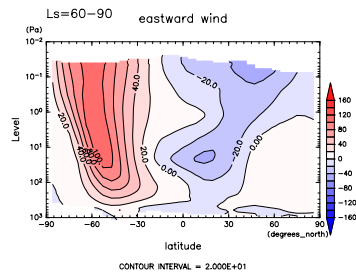


Figure 66: U at  $L_S=60^\circ-90^\circ$  by DC-PAM

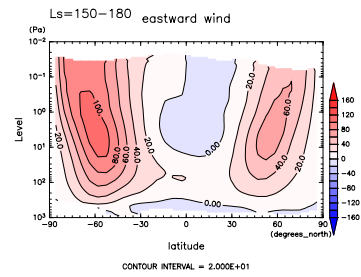


Figure 69: U at  $L_S=150^\circ-180^\circ$  by DC-PAM

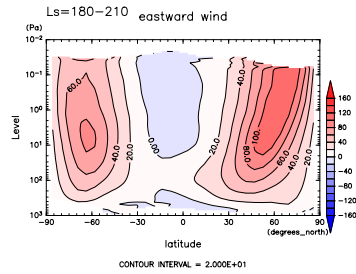


Figure 70: U at  $L_S=180^\circ-210^\circ$  by DC-PAM

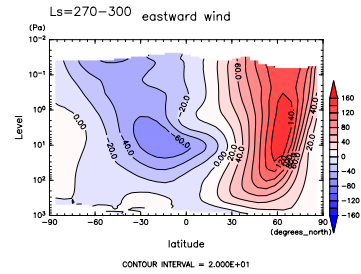


Figure 73: U at  $L_S=270^\circ-300^\circ$  by DC-PAM

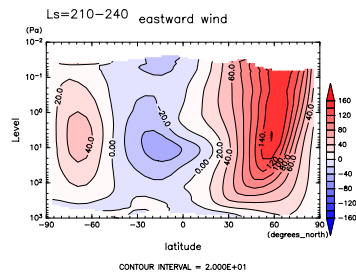


Figure 71: U at  $L_S=210^\circ-240^\circ$  by DC-PAM

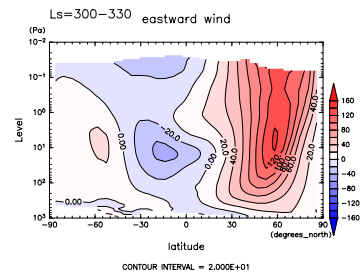


Figure 74: U at  $L_S=300^\circ-330^\circ$  by DC-PAM

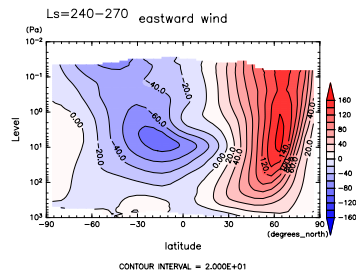


Figure 72: U at  $L_S=240^\circ-270^\circ$  by DC-PAM

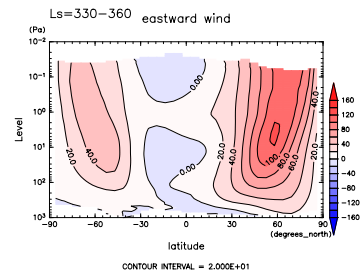


Figure 75: U at  $L_S=330^\circ-360^\circ$  by DC-PAM

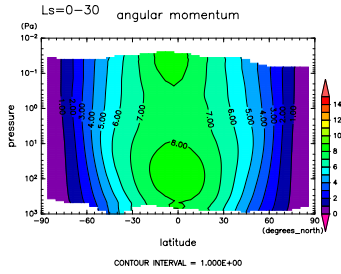


Figure 76: ANG MOM at  $L_s=0^\circ-30^\circ$  by DCPAM

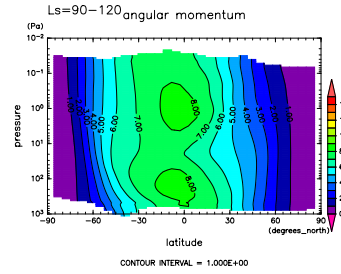


Figure 79: ANG MOM at  $L_s=90^\circ-120^\circ$  by DCPAM

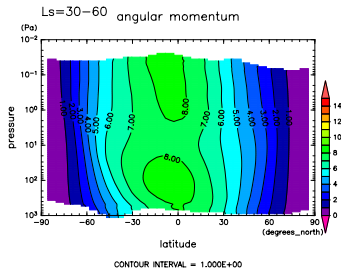


Figure 77: ANG MOM at  $L_s=30^\circ-60^\circ$  by DCPAM

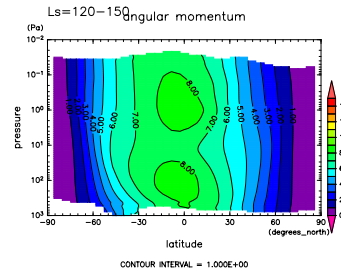


Figure 80: ANG MOM at  $L_s=120^\circ-150^\circ$  by DCPAM

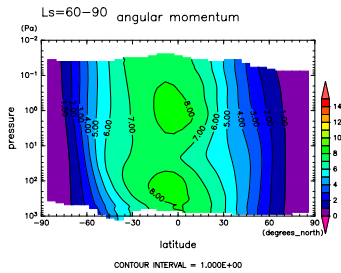


Figure 78: ANG MOM at  $L_s=60^\circ-90^\circ$  by DCPAM

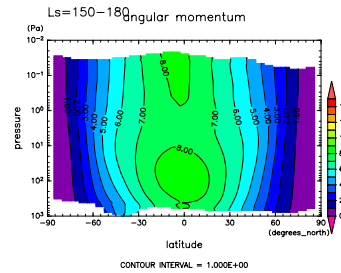


Figure 81: ANG MOM at  $L_s=150^\circ-180^\circ$  by DCPAM



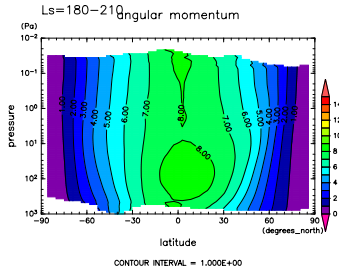


Figure 82: ANG MOM at  $L_s=180^\circ-210^\circ$  by DCPAM

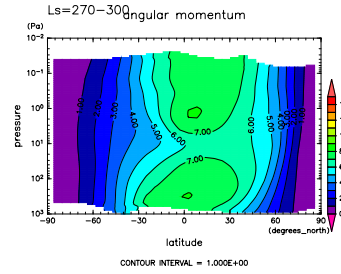


Figure 85: ANG MOM at  $L_s=270^\circ-300^\circ$  by DCPAM

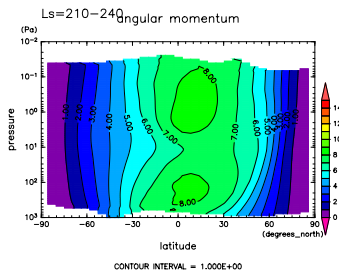


Figure 83: ANG MOM at  $L_s=210^\circ-240^\circ$  by DCPAM

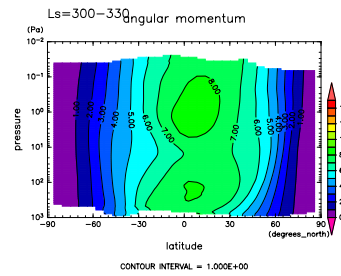


Figure 86: ANG MOM at  $L_s=300^\circ-330^\circ$  by DCPAM

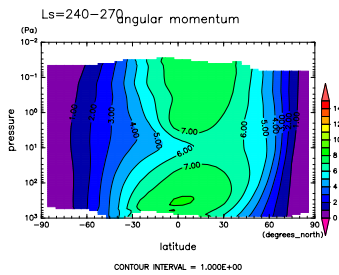


Figure 84: ANG MOM at  $L_s=240^\circ-270^\circ$  by DCPAM

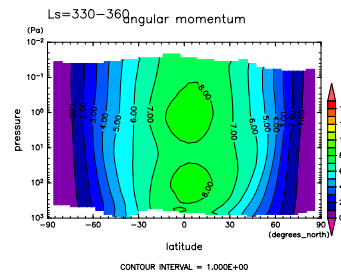


Figure 87: ANG MOM at  $L_s=330^\circ-360^\circ$  by DCPAM

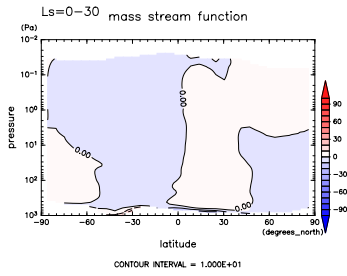


Figure 88: MSF at  $L_s=0^\circ-30^\circ$  by DCPAM

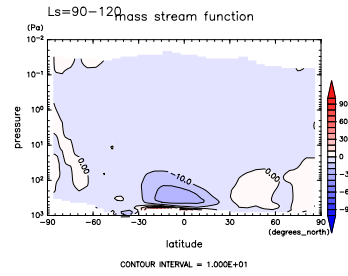


Figure 91: MSF at  $L_s=90^\circ-120^\circ$  by DCPAM

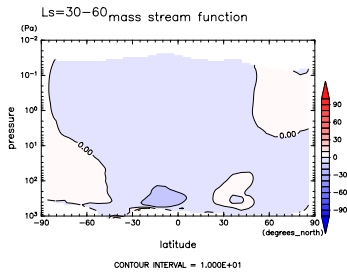


Figure 89: MSF at  $L_s=30^\circ-60^\circ$  by DCPAM

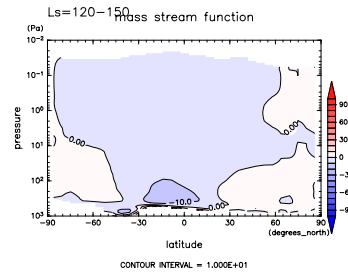


Figure 92: MSF at  $L_s=120^\circ-150^\circ$  by DCPAM

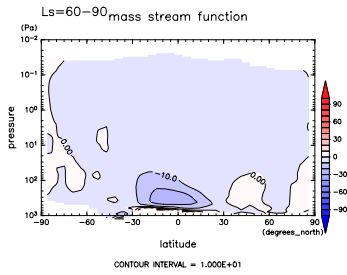


Figure 90: MSF at  $L_s=60^\circ-90^\circ$  by DCPAM

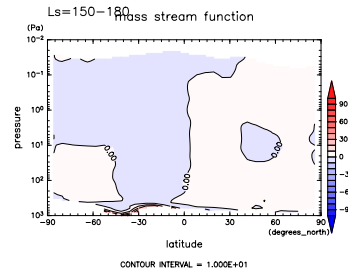


Figure 93: MSF at  $L_s=150^\circ-180^\circ$  by DCPAM

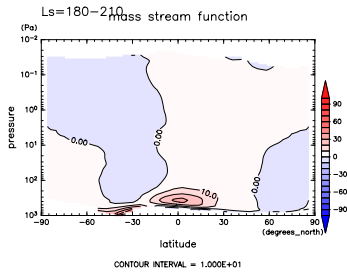


Figure 94: MSF at  $L_s=180^\circ-210^\circ$  by DCPAM

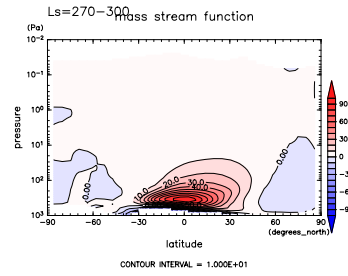


Figure 97: MSF at  $L_s=270^\circ-300^\circ$  by DCPAM

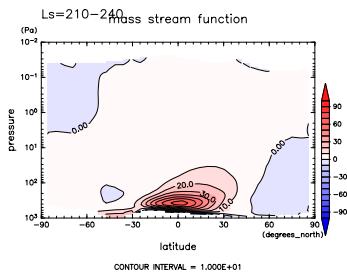


Figure 95: MSF at  $L_s=210^\circ-240^\circ$  by DCPAM

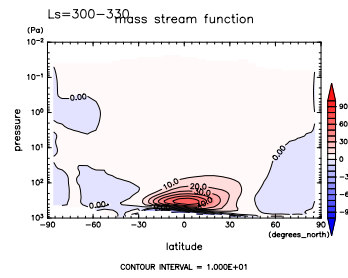


Figure 98: MSF at  $L_s=300^\circ-330^\circ$  by DCPAM

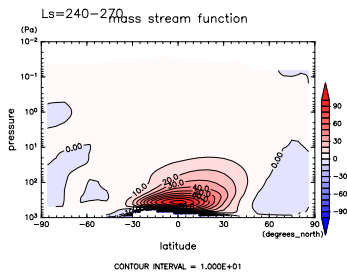


Figure 96: MSF at  $L_s=240^\circ-270^\circ$  by DCPAM

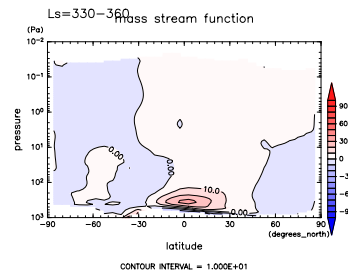


Figure 99: MSF at  $L_s=330^\circ-360^\circ$  by DCPAM

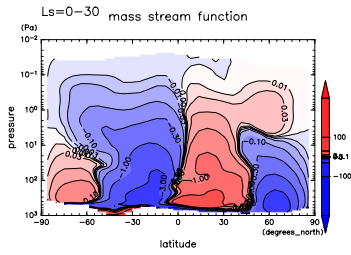


Figure 100: MSF at  $L_s=0^\circ-30^\circ$  by DCPAM

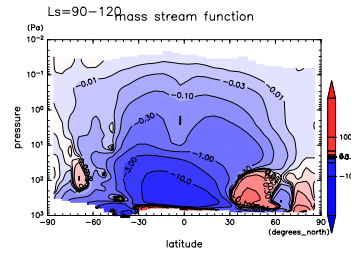


Figure 103: MSF at  $L_s=90^\circ-120^\circ$  by DCPAM

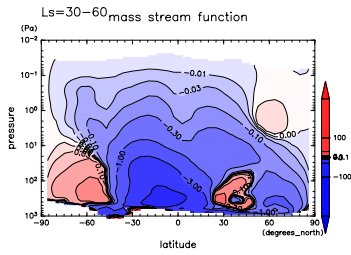


Figure 101: MSF at  $L_s=30^\circ-60^\circ$  by DCPAM

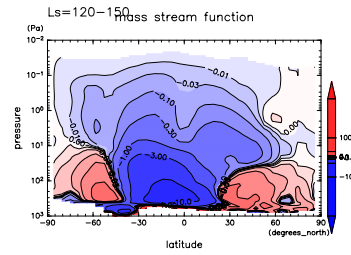


Figure 104: MSF at  $L_s=120^\circ-150^\circ$  by DCPAM

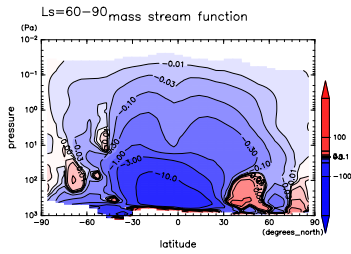


Figure 102: MSF at  $L_s=60^\circ-90^\circ$  by DCPAM

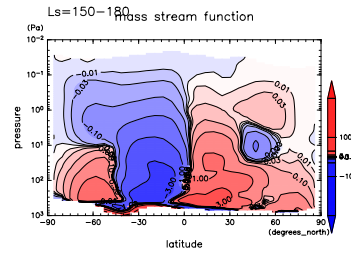


Figure 105: MSF at  $L_s=150^\circ-180^\circ$  by DCPAM

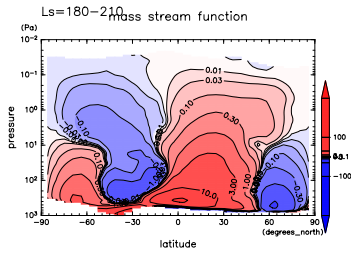


Figure 106: MSF at  $L_s=180^\circ-210^\circ$  by DCPAM

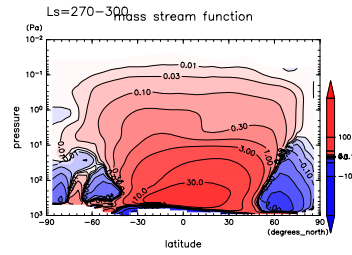


Figure 109: MSF at  $L_s=270^\circ-300^\circ$  by DCPAM

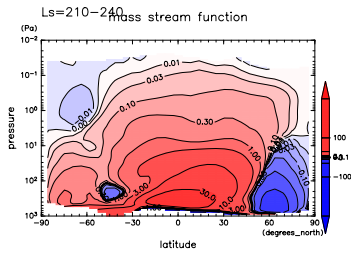


Figure 107: MSF at  $L_s=210^\circ-240^\circ$  by DCPAM

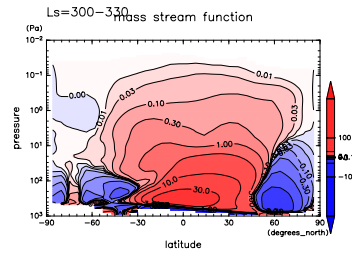


Figure 110: MSF at  $L_s=300^\circ-330^\circ$  by DCPAM

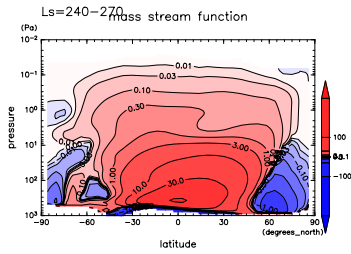


Figure 108: MSF at  $L_s=240^\circ-270^\circ$  by DCPAM

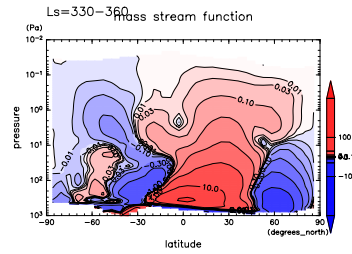


Figure 111: MSF at  $L_s=330^\circ-360^\circ$  by DCPAM

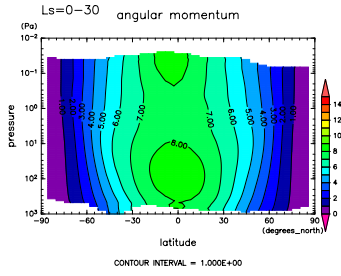


Figure 112: ANG MOM at  $L_S=0^\circ-30^\circ$  by DCPAM

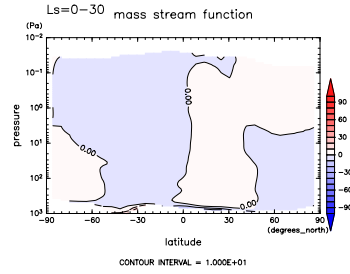


Figure 115: MSF at  $L_S=0^\circ-30^\circ$  by DCPAM

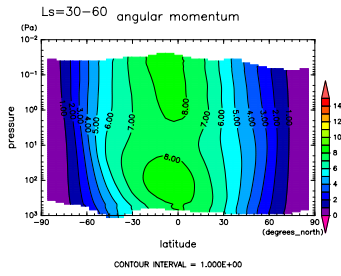


Figure 113: ANG MOM at  $L_S=30^\circ-60^\circ$  by DCPAM

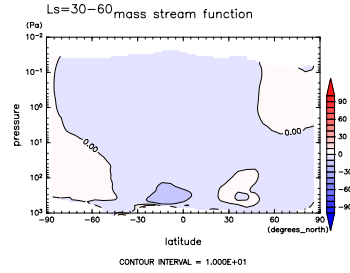


Figure 116: MSF at  $L_S=30^\circ-60^\circ$  by DCPAM

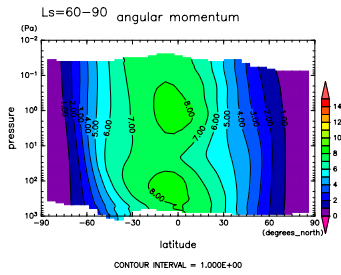


Figure 114: ANG MOM at  $L_S=60^\circ-90^\circ$  by DCPAM

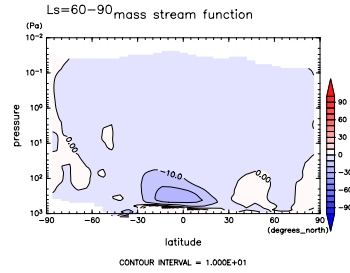


Figure 117: MSF at  $L_S=60^\circ-90^\circ$  by DCPAM

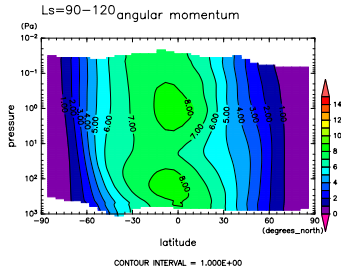


Figure 118: ANG MOM at  $L_s=90^\circ-120^\circ$  by DCPAM

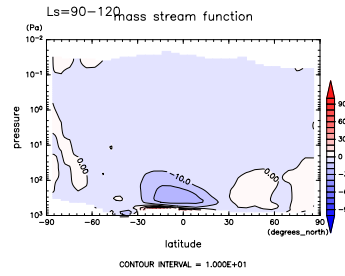


Figure 121: MSF at  $L_s=90^\circ-120^\circ$  by DCPAM

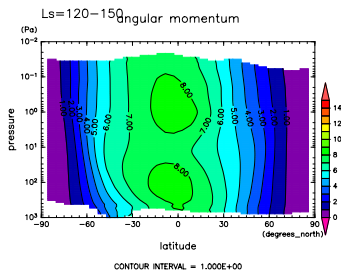


Figure 119: ANG MOM at  $L_s=120^\circ-150^\circ$  by DCPAM

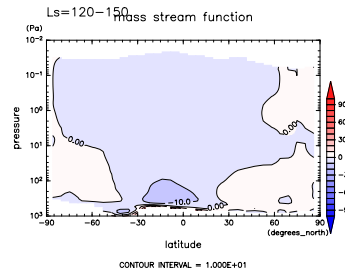


Figure 122: MSF at  $L_s=120^\circ-150^\circ$  by DCPAM

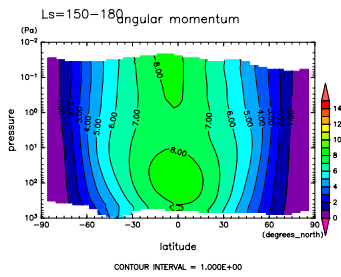


Figure 120: ANG MOM at  $L_s=150^\circ-180^\circ$  by DCPAM

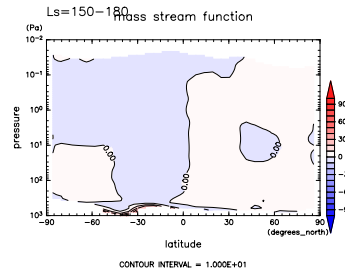


Figure 123: MSF at  $L_s=150^\circ-180^\circ$  by DCPAM

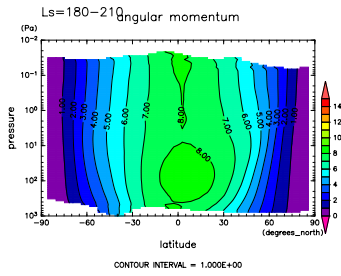


Figure 124: ANGMOM at  $L_s=180^\circ-210^\circ$  by DCPAM

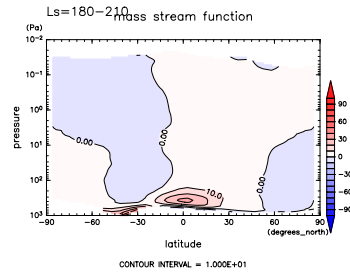


Figure 127: MSF at  $L_s=180^\circ-210^\circ$  by DCPAM

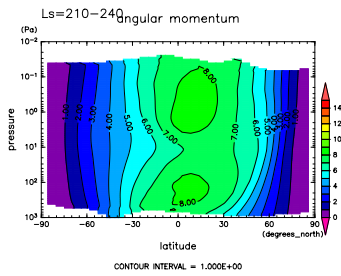


Figure 125: ANGMOM at  $L_s=210^\circ-240^\circ$  by DCPAM

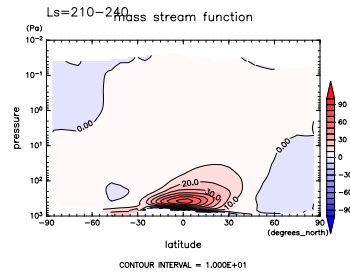


Figure 128: MSF at  $L_s=210^\circ-240^\circ$  by DCPAM

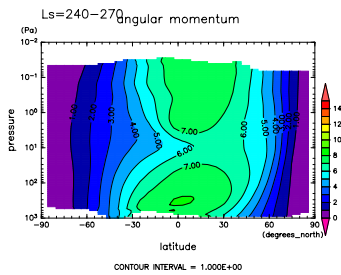


Figure 126: ANGMOM at  $L_s=240^\circ-270^\circ$  by DCPAM

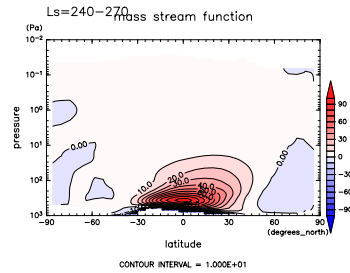


Figure 129: MSF at  $L_s=240^\circ-270^\circ$  by DCPAM



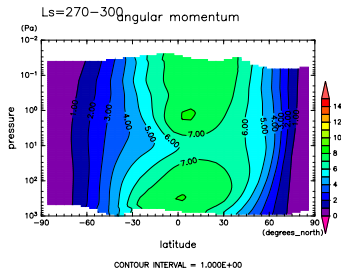


Figure 130: ANGMOM at  $L_s=270^\circ-300^\circ$  by DCPAM

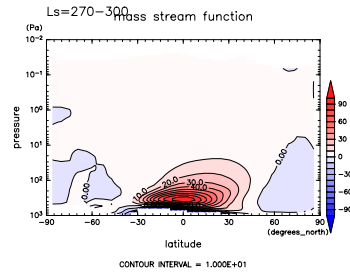


Figure 133: MSF at  $L_s=270^\circ-300^\circ$  by DCPAM

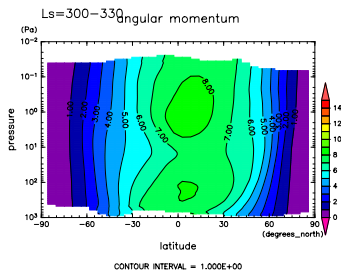


Figure 131: ANGMOM at  $L_s=300^\circ-330^\circ$  by DCPAM

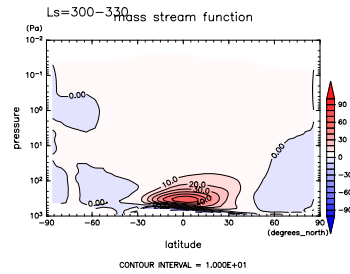


Figure 134: MSF at  $L_s=300^\circ-330^\circ$  by DCPAM

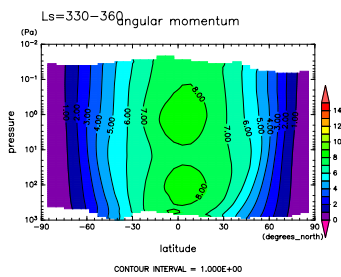


Figure 132: ANGMOM at  $L_s=330^\circ-360^\circ$  by DCPAM

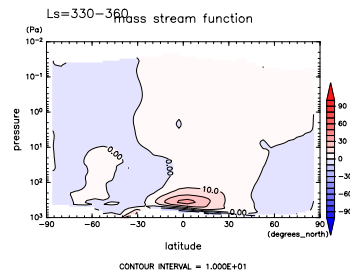


Figure 135: MSF at  $L_s=330^\circ-360^\circ$  by DCPAM

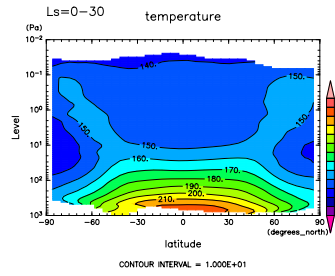


Figure 136: Temp at  $L_S=0^\circ-30^\circ$  by DCPAM

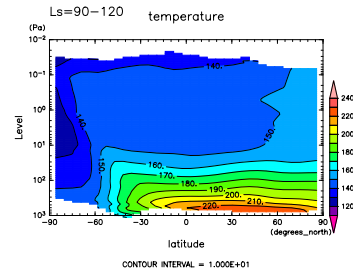


Figure 139: Temp at  $L_S=90^\circ-120^\circ$  by DCPAM

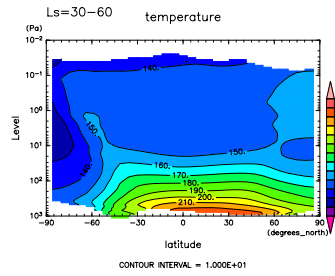


Figure 137: Temp at  $L_S=30^\circ-60^\circ$  by DCPAM

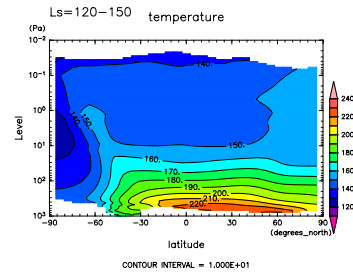


Figure 140: Temp at  $L_S=120^\circ-150^\circ$  by DCPAM

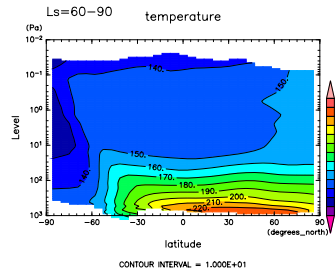


Figure 138: Temp at  $L_S=60^\circ-90^\circ$  by DCPAM

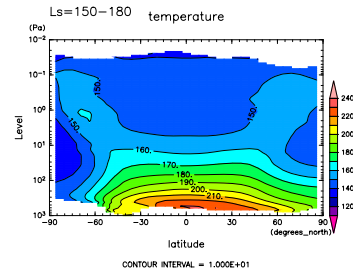


Figure 141: Temp at  $L_S=150^\circ-180^\circ$  by DCPAM

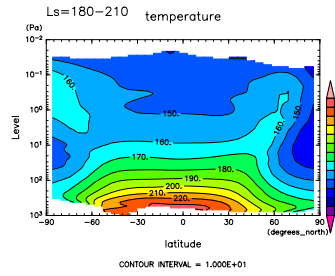


Figure 142: Temp at  $L_S=180^\circ-210^\circ$  by DCPAM

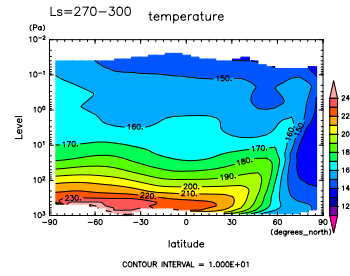


Figure 145: Temp at  $L_S=270^\circ-300^\circ$  by DCPAM

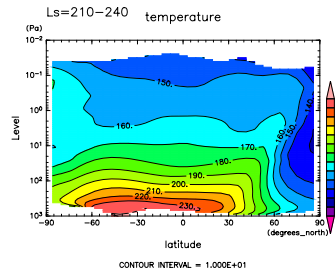


Figure 143: Temp at  $L_S=210^\circ-240^\circ$  by DCPAM

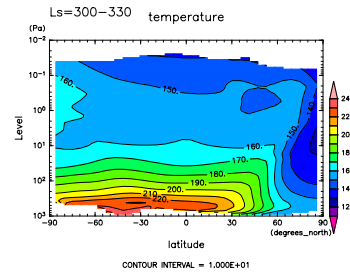


Figure 146: Temp at  $L_S=300^\circ-330^\circ$  by DCPAM

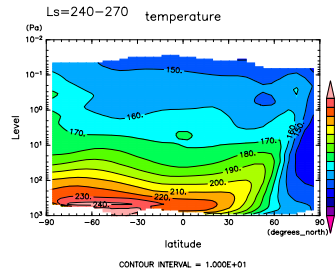


Figure 144: Temp at  $L_S=240^\circ-270^\circ$  by DCPAM

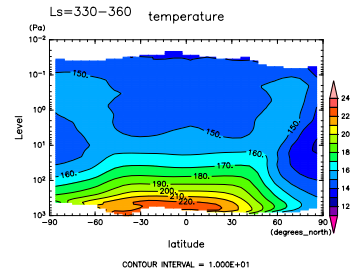


Figure 147: Temp at  $L_S=330^\circ-360^\circ$  by DCPAM

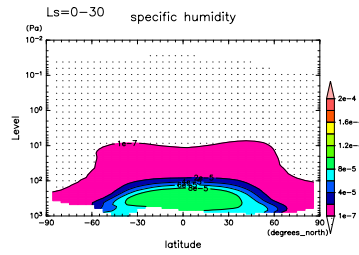


Figure 148: QH2OVap at  $L_s=0^\circ-30^\circ$  by DCPAM

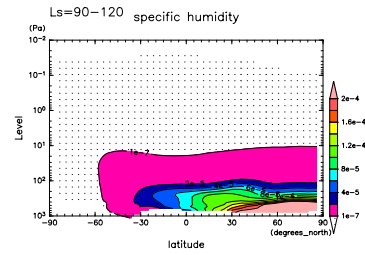


Figure 151: QH2OVap at  $L_s=90^\circ-120^\circ$  by DCPAM

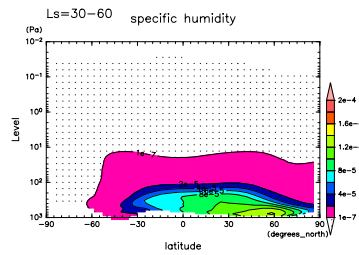


Figure 149: QH2OVap at  $L_s=30^\circ-60^\circ$  by DCPAM

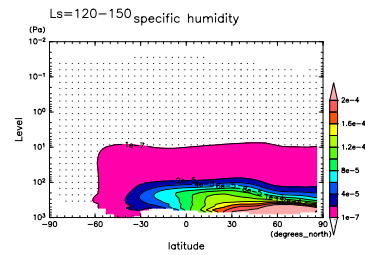


Figure 152: QH2OVap at  $L_s=120^\circ-150^\circ$  by DCPAM

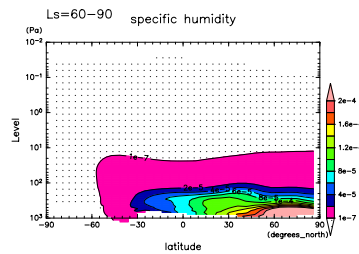


Figure 150: QH2OVap at  $L_s=60^\circ-90^\circ$  by DCPAM

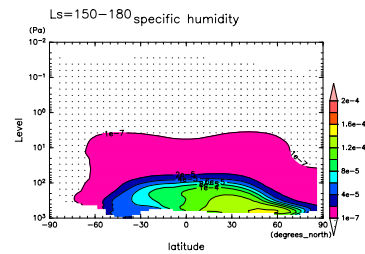


Figure 153: QH2OVap at  $L_s=150^\circ-180^\circ$  by DCPAM

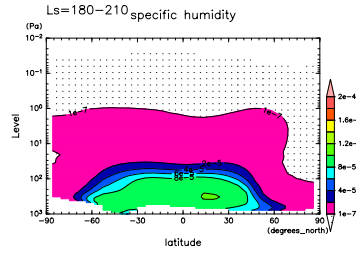


Figure 154: QH2OVap at  $L_s=180^\circ-210^\circ$  by DCPAM

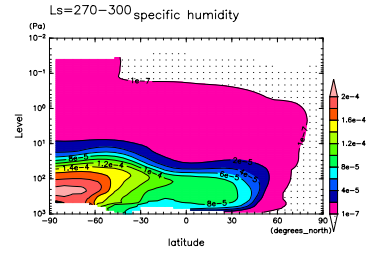


Figure 157: QH2OVap at  $L_s=270^\circ-300^\circ$  by DCPAM

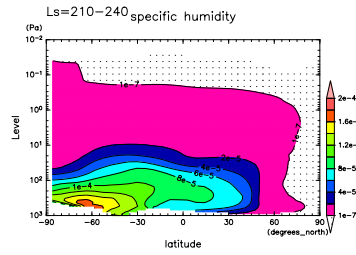


Figure 155: QH2OVap at  $L_s=210^\circ-240^\circ$  by DCPAM

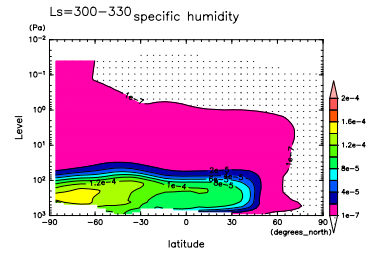


Figure 158: QH2OVap at  $L_s=300^\circ-330^\circ$  by DCPAM

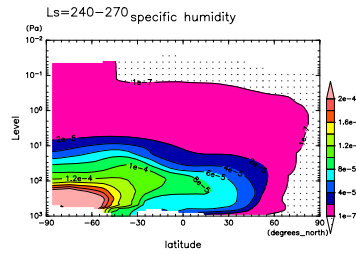


Figure 156: QH2OVap at  $L_s=240^\circ-270^\circ$  by DCPAM

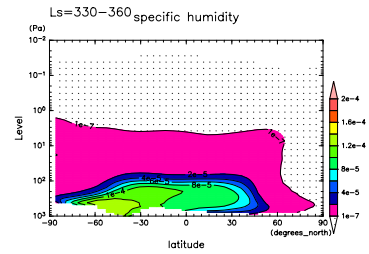


Figure 159: QH2OVap at  $L_s=330^\circ-360^\circ$  by DCPAM

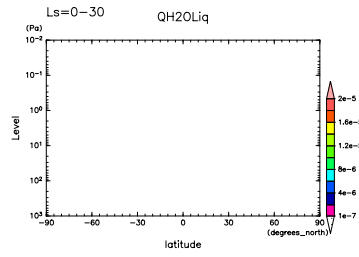


Figure 160: QH2OLiq at  $L_S=0^\circ-30^\circ$  by DCPAM

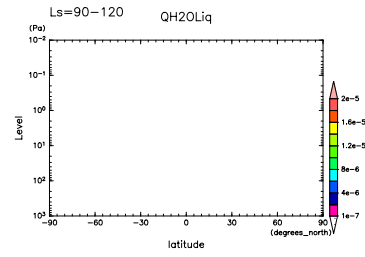


Figure 163: QH2OLiq at  $L_S=90^\circ-120^\circ$  by DCPAM

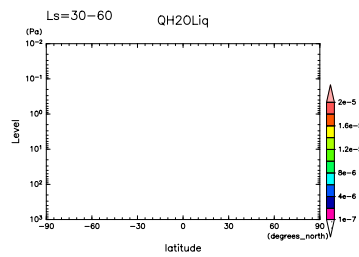


Figure 161: QH2OLiq at  $L_S=30^\circ-60^\circ$  by DCPAM

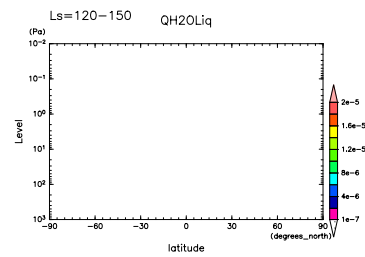


Figure 164: QH2OLiq at  $L_S=120^\circ-150^\circ$  by DCPAM

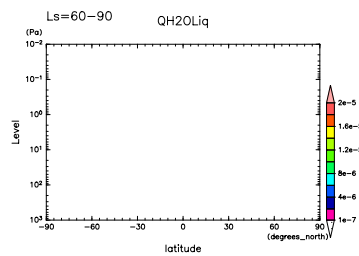


Figure 162: QH2OLiq at  $L_S=60^\circ-90^\circ$  by DCPAM

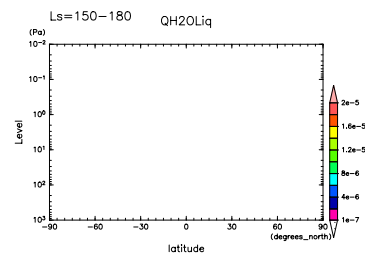


Figure 165: QH2OLiq at  $L_S=150^\circ-180^\circ$  by DCPAM

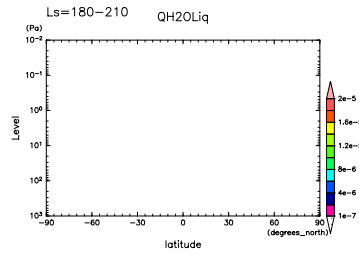


Figure 166: QH2OLiQ at  $L_s=180^\circ-210^\circ$  by DCPAM

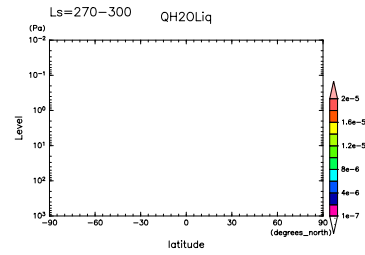


Figure 169: QH2OLiQ at  $L_s=270^\circ-300^\circ$  by DCPAM

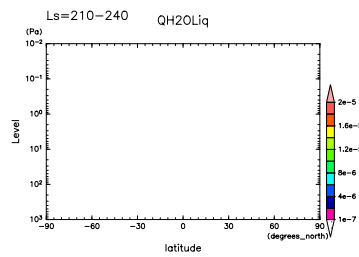


Figure 167: QH2OLiQ at  $L_s=210^\circ-240^\circ$  by DCPAM

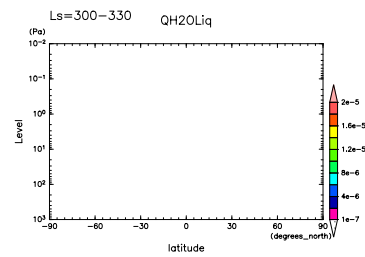


Figure 170: QH2OLiQ at  $L_s=300^\circ-330^\circ$  by DCPAM

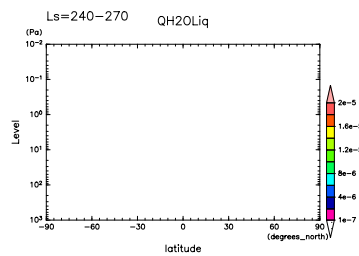


Figure 168: QH2OLiQ at  $L_s=240^\circ-270^\circ$  by DCPAM

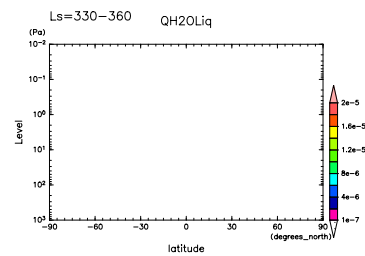


Figure 171: QH2OLiQ at  $L_s=330^\circ-360^\circ$  by DCPAM

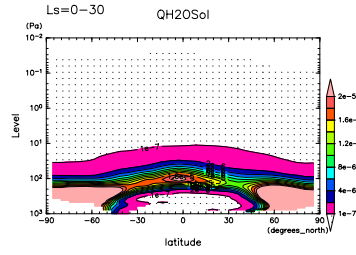


Figure 172: QH2OSol at  $L_S=0^\circ-30^\circ$  by DCPAM

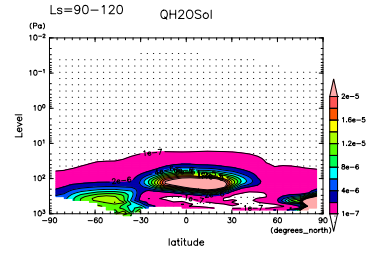


Figure 175: QH2OSol at  $L_S=90^\circ-120^\circ$  by DCPAM

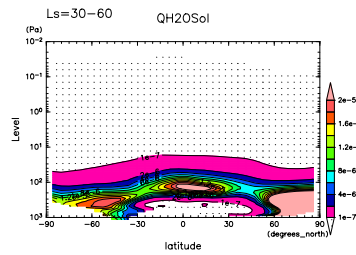


Figure 173: QH2OSol at  $L_S=30^\circ-60^\circ$  by DCPAM

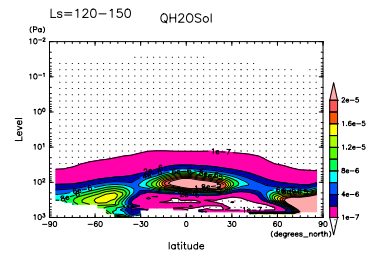


Figure 176: QH2OSol at  $L_S=120^\circ-150^\circ$  by DCPAM

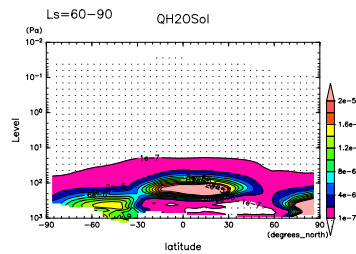


Figure 174: QH2OSol at  $L_S=60^\circ-90^\circ$  by DCPAM

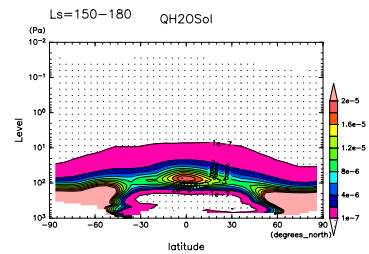


Figure 177: QH2OSol at  $L_S=150^\circ-180^\circ$  by DCPAM



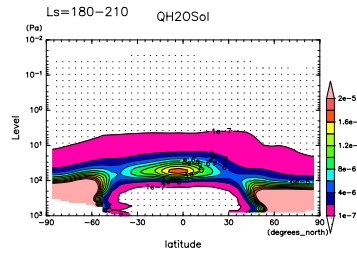


Figure 178: QH2OSol at  $L_s=180^\circ-210^\circ$  by DCPAM

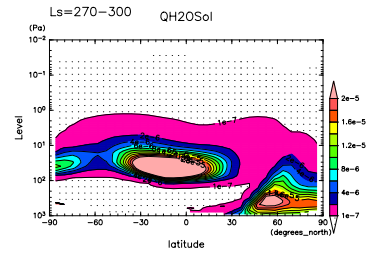


Figure 181: QH2OSol at  $L_s=270^\circ-300^\circ$  by DCPAM

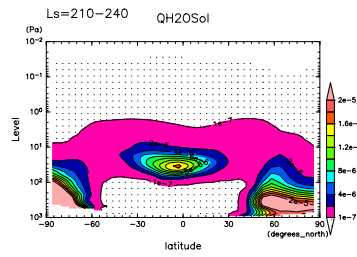


Figure 179: QH2OSol at  $L_s=210^\circ-240^\circ$  by DCPAM

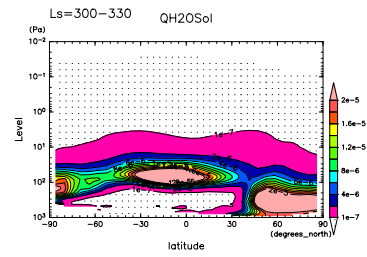


Figure 182: QH2OSol at  $L_s=300^\circ-330^\circ$  by DCPAM

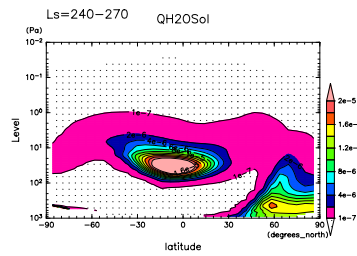


Figure 180: QH2OSol at  $L_s=240^\circ-270^\circ$  by DCPAM

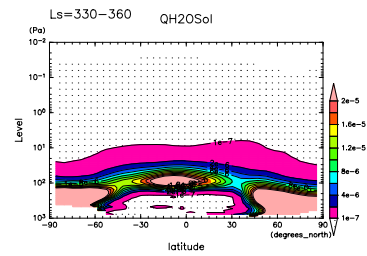


Figure 183: QH2OSol at  $L_s=330^\circ-360^\circ$  by DCPAM

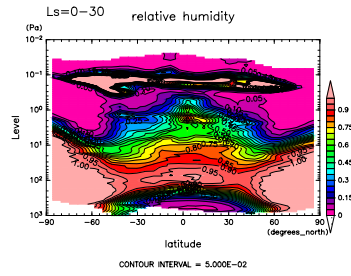


Figure 184: RH at  $L_s=0^\circ-30^\circ$  by DCPAM

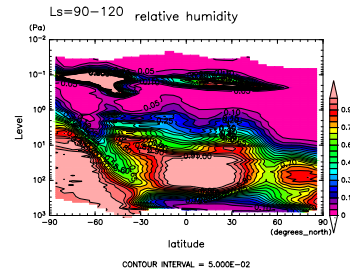


Figure 187: RH at  $L_s=90^\circ-120^\circ$  by DCPAM

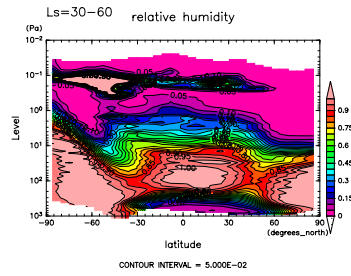


Figure 185: RH at  $L_s=30^\circ-60^\circ$  by DCPAM

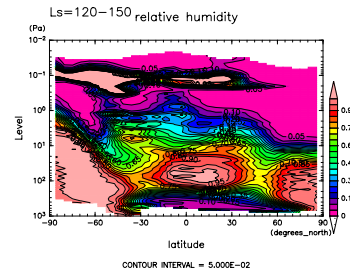


Figure 188: RH at  $L_s=120^\circ-150^\circ$  by DCPAM

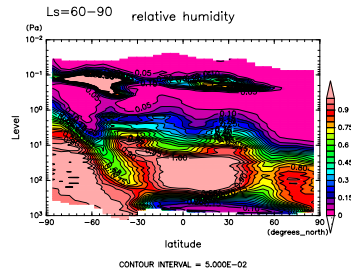


Figure 186: RH at  $L_s=60^\circ-90^\circ$  by DCPAM

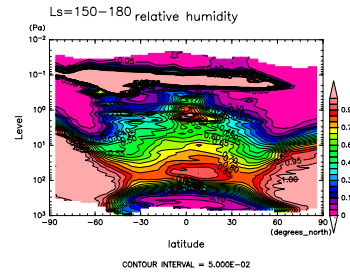


Figure 189: RH at  $L_s=150^\circ-180^\circ$  by DCPAM

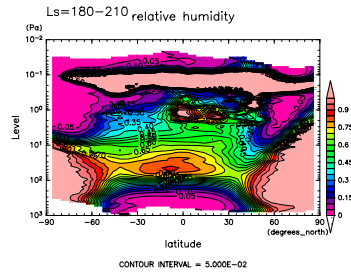


Figure 190: RH at  $L_s=180^\circ-210^\circ$  by DCPAM

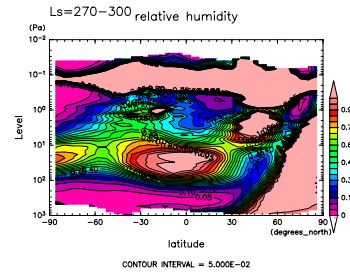


Figure 193: RH at  $L_s=270^\circ-300^\circ$  by DCPAM

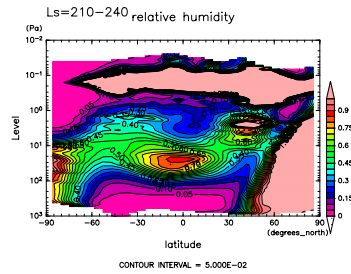


Figure 191: RH at  $L_s=210^\circ-240^\circ$  by DCPAM

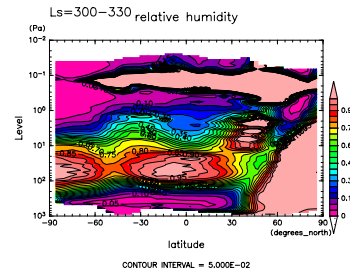


Figure 194: RH at  $L_s=300^\circ-330^\circ$  by DCPAM

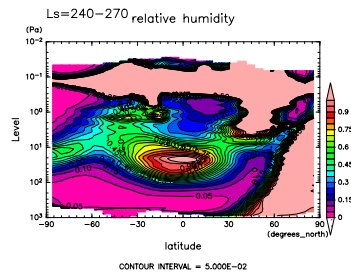


Figure 192: RH at  $L_s=240^\circ-270^\circ$  by DCPAM

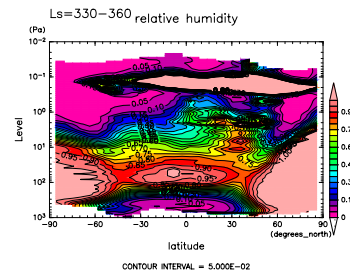


Figure 195: RH at  $L_s=330^\circ-360^\circ$  by DCPAM

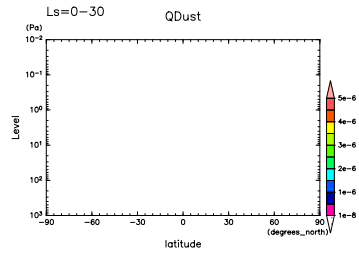


Figure 196: QDust at  $L_S=0^\circ-30^\circ$  by DCPAM

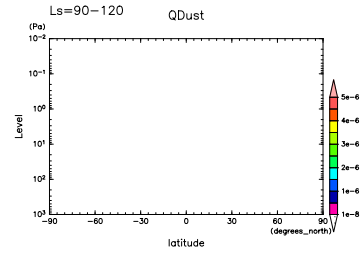


Figure 199: QDust at  $L_S=90^\circ-120^\circ$  by DCPAM

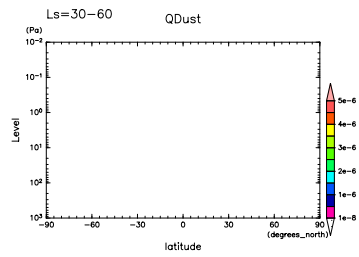


Figure 197: QDust at  $L_S=30^\circ-60^\circ$  by DCPAM

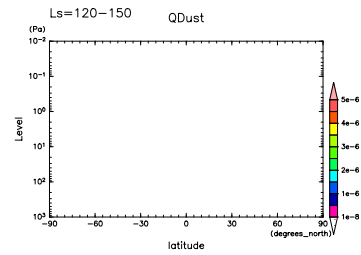


Figure 200: QDust at  $L_S=120^\circ-150^\circ$  by DCPAM

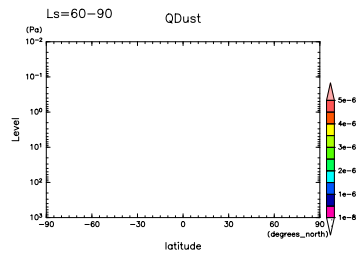


Figure 198: QDust at  $L_S=60^\circ-90^\circ$  by DCPAM

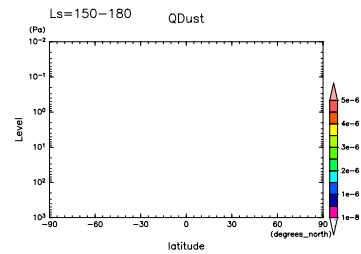


Figure 201: QDust at  $L_S=150^\circ-180^\circ$  by DCPAM

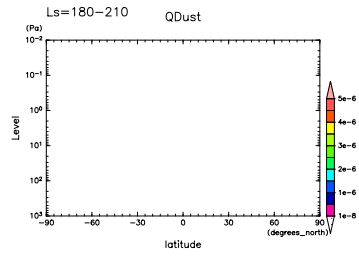


Figure 202: QDust at  $L_s=180^\circ-210^\circ$  by DCPAM

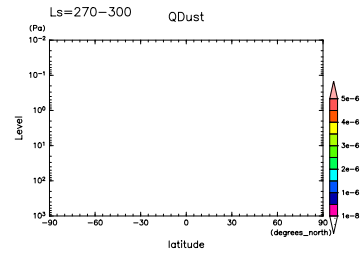


Figure 205: QDust at  $L_s=270^\circ-300^\circ$  by DCPAM

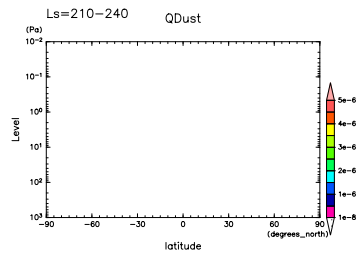


Figure 203: QDust at  $L_s=210^\circ-240^\circ$  by DCPAM

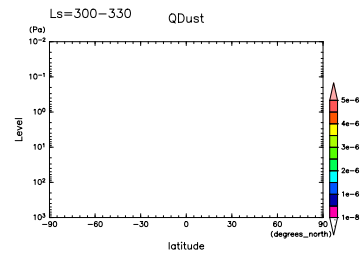


Figure 206: QDust at  $L_s=300^\circ-330^\circ$  by DCPAM

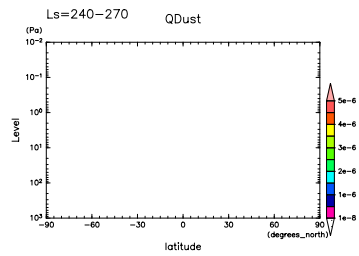


Figure 204: QDust at  $L_s=240^\circ-270^\circ$  by DCPAM

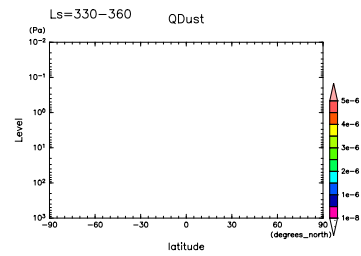


Figure 207: QDust at  $L_s=330^\circ-360^\circ$  by DCPAM

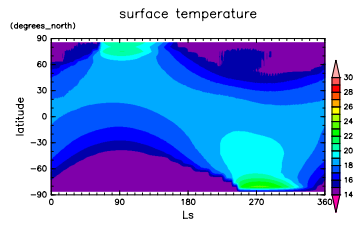


Figure 208:  $T_s$  at 02 LST by DCPAM

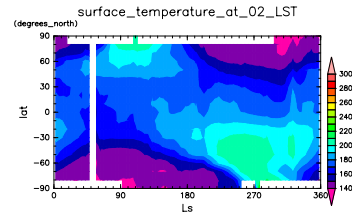


Figure 210:  $T_s$  at 02 LST by MGS

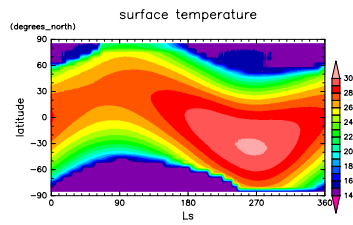


Figure 209:  $T_s$  at 14 LST by DCPAM

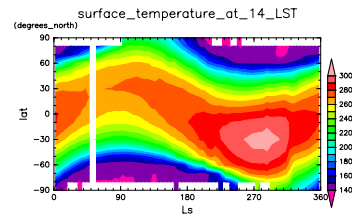


Figure 211:  $T_s$  at 14 LST by MGS

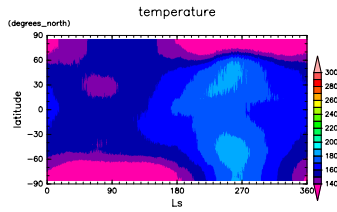


Figure 212: T at 18 Pa and at 02 LST by DCPAM

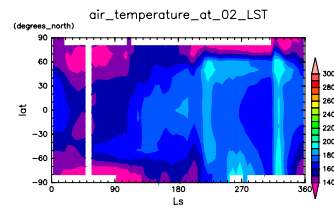


Figure 216: T at 18 Pa and at 02 LST by MGS

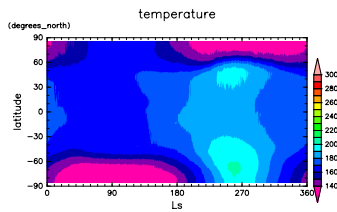


Figure 213: T at 50 Pa and at 02 LST by DCPAM

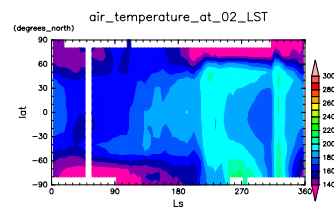


Figure 217: T at 50 Pa and at 02 LST by MGS

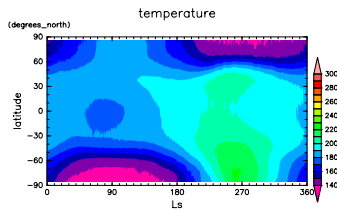


Figure 214: T at 136 Pa and at 02 LST by DCPAM

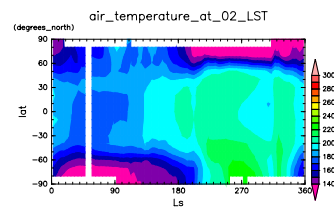


Figure 218: T at 136 Pa and at 02 LST by MGS

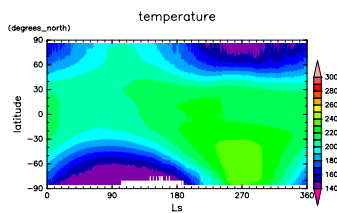


Figure 215: T at 370 Pa and at 02 LST by DCPAM

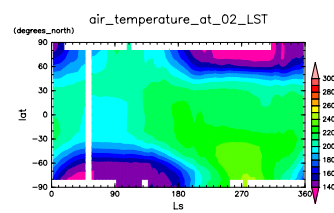


Figure 219: T at 370 Pa and at 02 LST by MGS

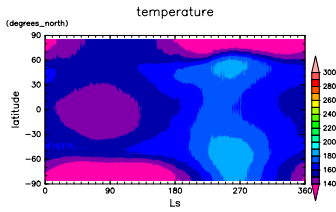


Figure 220: T at 18 Pa and at 14 LST by DCPAM

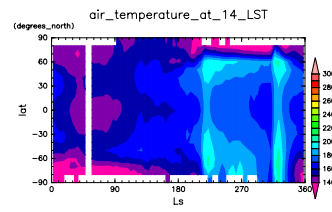


Figure 224: T at 18 Pa and at 14 LST by MGS

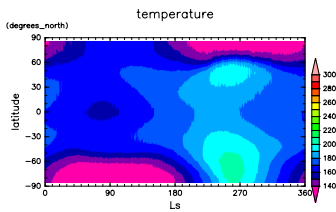


Figure 221: T at 50 Pa and at 14 LST by DCPAM

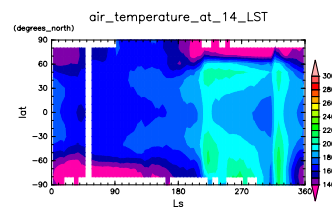


Figure 225: T at 50 Pa and at 14 LST by MGS

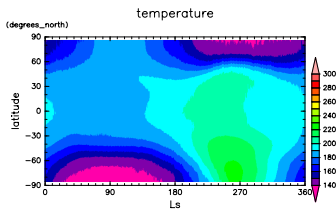


Figure 222: T at 136 Pa and at 14 LST by DCPAM

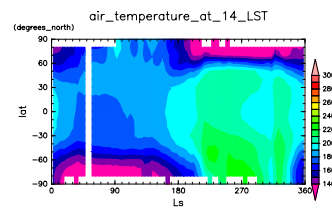


Figure 226: T at 136 Pa and at 14 LST by MGS

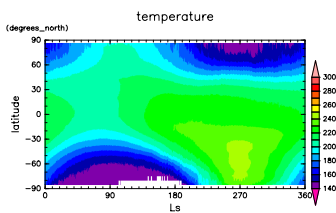


Figure 223: T at 370 Pa and at 14 LST by DCPAM

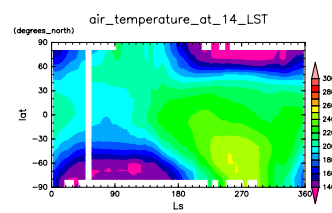


Figure 227: T at 370 Pa and at 14 LST by MGS



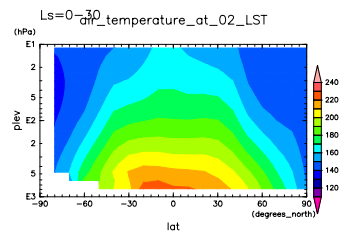
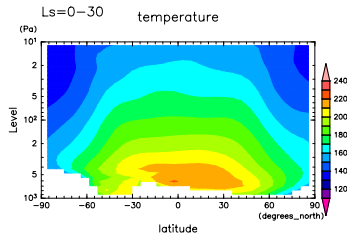


Figure 228: Temp at 02 LST and Ls=0°-30° by DCPAM

Figure 231: Temp at 02 LST and Ls=0°-30° by MGS

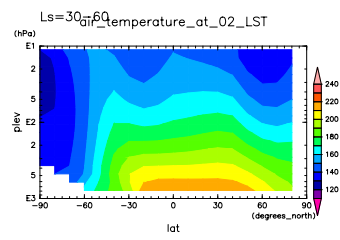
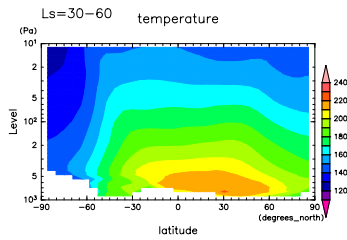


Figure 229: Temp at 02 LST and Ls=30°-60° by DCPAM

Figure 232: Temp at 02 LST and Ls=30°-60° by MGS

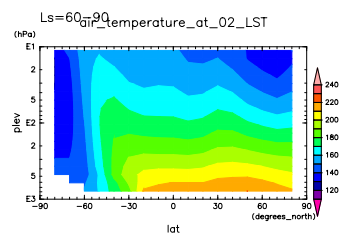
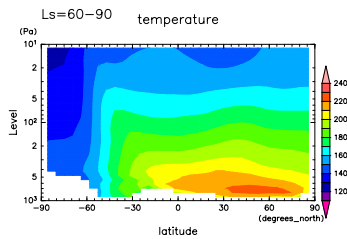


Figure 230: Temp at 02 LST and Ls=60°-90° by DCPAM

Figure 233: Temp at 02 LST and Ls=60°-90° by MGS

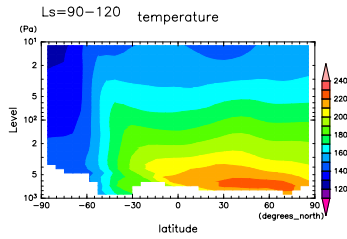


Figure 234: Temp at 02 LST and Ls=90°-120° by DCPAM

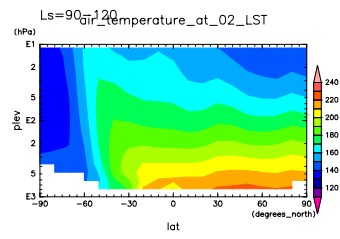


Figure 237: Temp at 02 LST and Ls=90°-120° by MGS

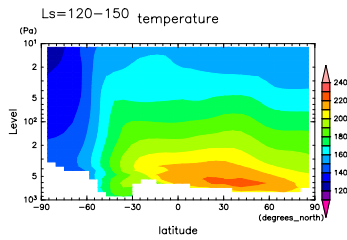


Figure 235: Temp at 02 LST and Ls=120°-150° by DCPAM

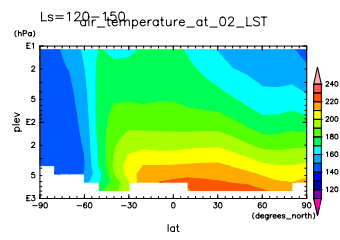


Figure 238: Temp at 02 LST and Ls=120°-150° by MGS

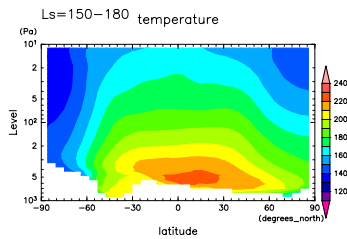


Figure 236: Temp at 02 LST and Ls=150°-180° by DCPAM

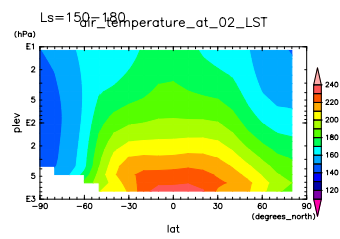


Figure 239: Temp at 02 LST and Ls=150°-180° by MGS

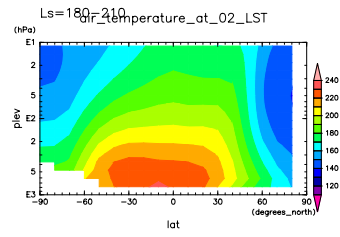
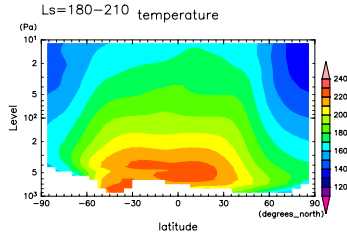


Figure 240: Temp at 02 LST and Ls=180°-210° by DCPAM

Figure 243: Temp at 02 LST and Ls=180°-210° by MGS

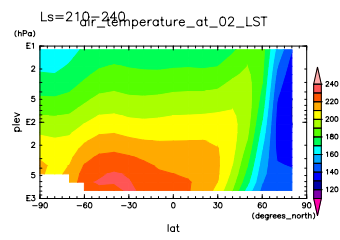
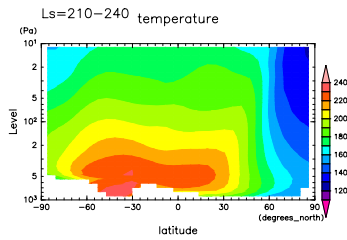


Figure 241: Temp at 02 LST and Ls=210°-240° by DCPAM

Figure 244: Temp at 02 LST and Ls=210°-240° by MGS

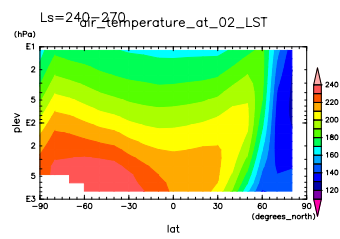
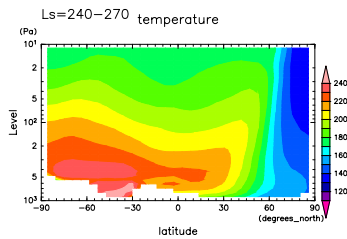


Figure 242: Temp at 02 LST and Ls=240°-270° by DCPAM

Figure 245: Temp at 02 LST and Ls=240°-270° by MGS

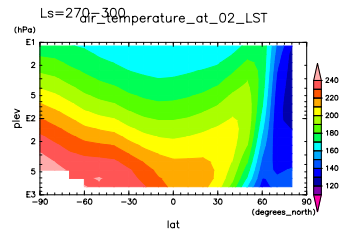
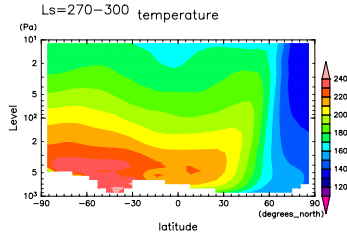


Figure 246: Temp at 02 LST and Ls=270°-300° by DCPAM

Figure 249: Temp at 02 LST and Ls=270°-300° by MGS

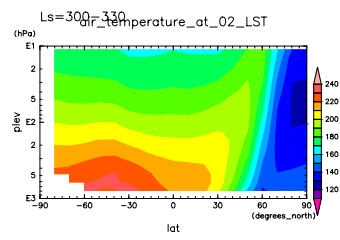
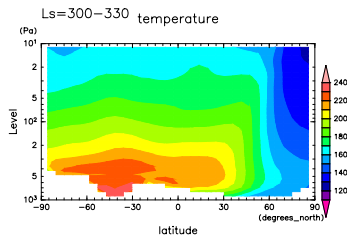


Figure 247: Temp at 02 LST and Ls=300°-330° by DCPAM

Figure 250: Temp at 02 LST and Ls=300°-330° by MGS

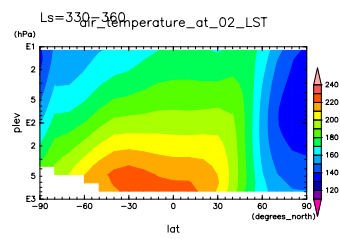
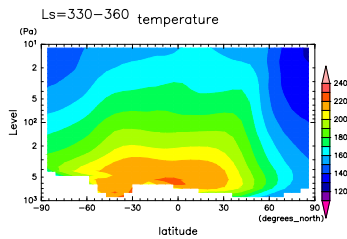


Figure 248: Temp at 02 LST and Ls=330°-360° by DCPAM

Figure 251: Temp at 02 LST and Ls=330°-360° by MGS

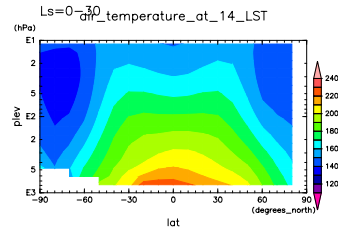
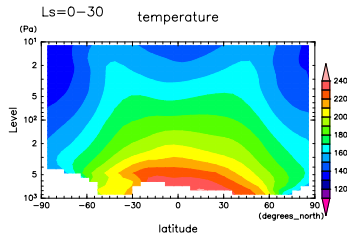


Figure 252: Temp at 14 LST and Ls=0°-30° by DCPAM

Figure 255: Temp at 14 LST and Ls=0°-30° by MGS

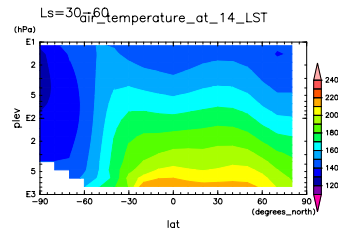
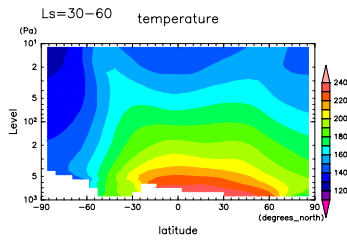


Figure 253: Temp at 14 LST and Ls=30°-60° by DCPAM

Figure 256: Temp at 14 LST and Ls=30°-60° by MGS

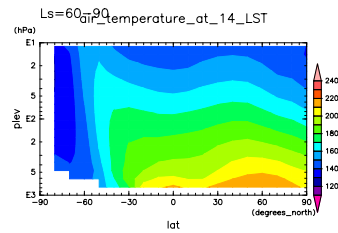
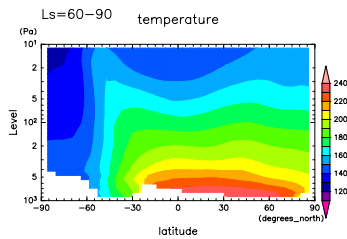


Figure 254: Temp at 14 LST and Ls=60°-90° by DCPAM

Figure 257: Temp at 14 LST and Ls=60°-90° by MGS

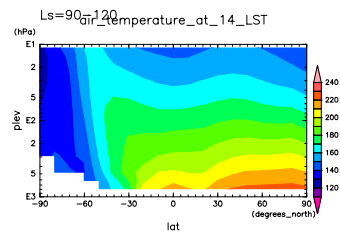
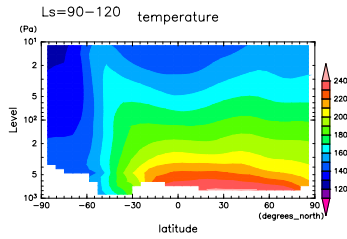


Figure 258: Temp at 14 LST and Ls=90°-120° by DCPAM

Figure 261: Temp at 14 LST and Ls=90°-120° by MGS

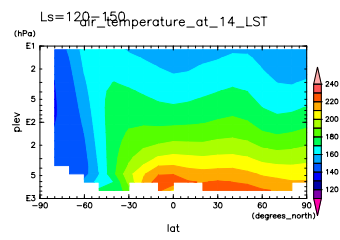
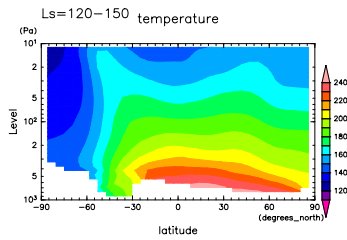


Figure 259: Temp at 14 LST and Ls=120°-150° by DCPAM

Figure 262: Temp at 14 LST and Ls=120°-150° by MGS

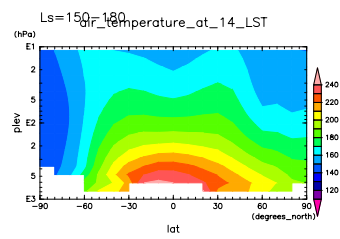
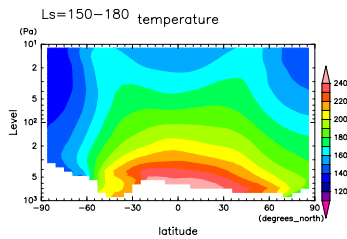


Figure 260: Temp at 14 LST and Ls=150°-180° by DCPAM

Figure 263: Temp at 14 LST and Ls=150°-180° by MGS

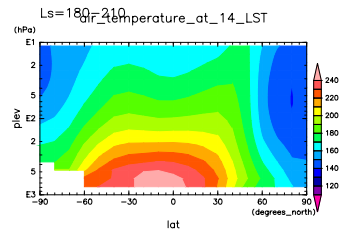
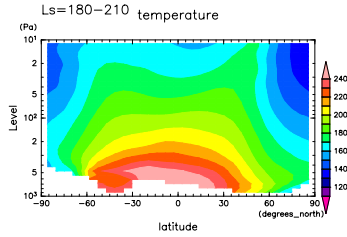


Figure 264: Temp at 14 LST and Ls=180°-210° by DCPAM

Figure 267: Temp at 14 LST and Ls=180°-210° by MGS

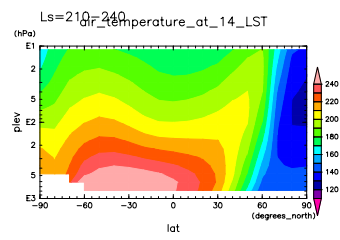
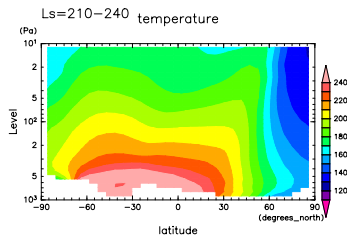


Figure 265: Temp at 14 LST and Ls=210°-240° by DCPAM

Figure 268: Temp at 14 LST and Ls=210°-240° by MGS

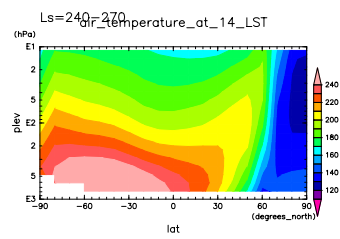
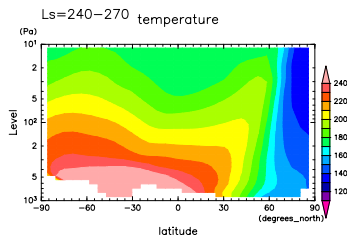


Figure 266: Temp at 14 LST and Ls=240°-270° by DCPAM

Figure 269: Temp at 14 LST and Ls=240°-270° by MGS

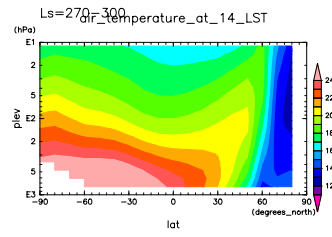
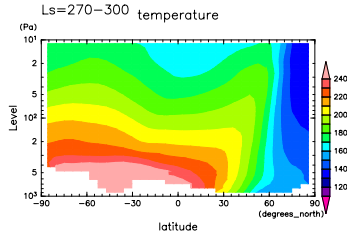


Figure 270: Temp at 14 LST and Ls=270°-300° by DCPAM

Figure 273: Temp at 14 LST and Ls=270°-300° by MGS

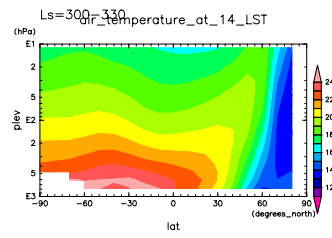
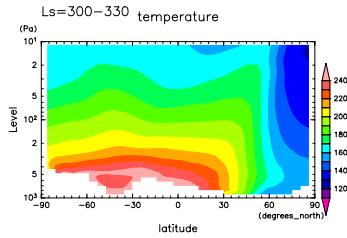


Figure 271: Temp at 14 LST and Ls=300°-330° by DCPAM

Figure 274: Temp at 14 LST and Ls=300°-330° by MGS

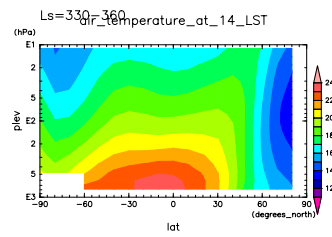
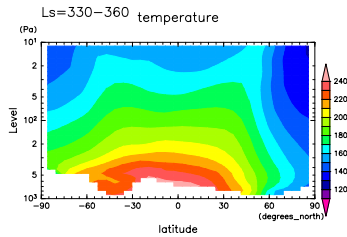


Figure 272: Temp at 14 LST and Ls=330°-360° by DCPAM

Figure 275: Temp at 14 LST and Ls=330°-360° by MGS



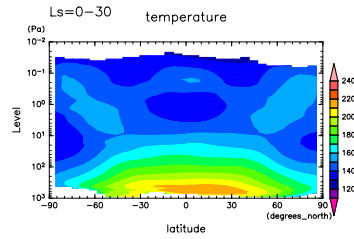


Figure 276: Temp at 03 LST and Ls=0°-30° by DCPAM

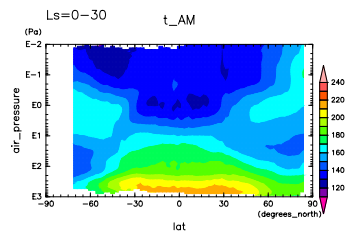


Figure 279: Temp at 03 LST and Ls=0°-30° by MRO

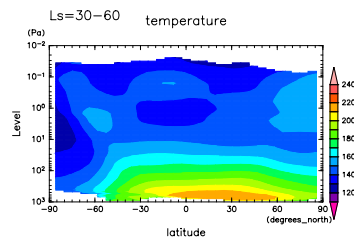


Figure 277: Temp at 03 LST and Ls=30°-60° by DCPAM

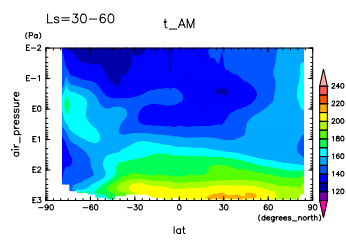


Figure 280: Temp at 03 LST and Ls=30°-60° by MRO

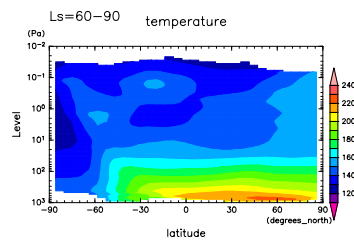


Figure 278: Temp at 03 LST and Ls=60°-90° by DCPAM

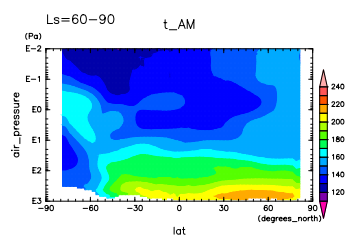


Figure 281: Temp at 03 LST and Ls=60°-90° by MRO

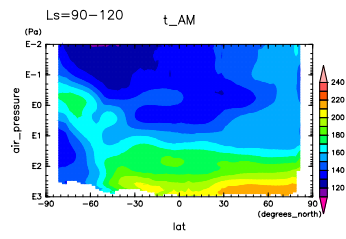
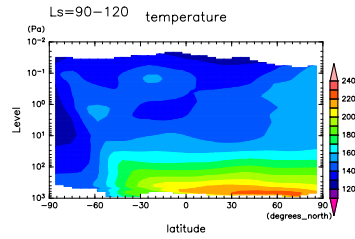


Figure 282: Temp at 03 LST and Ls=90°-120° by DCPAM

Figure 285: Temp at 03 LST and Ls=90°-120° by MRO

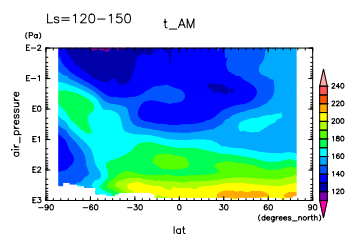
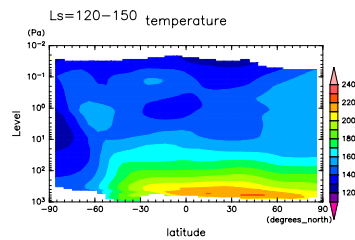


Figure 283: Temp at 03 LST and Ls=120°-150° by DCPAM

Figure 286: Temp at 03 LST and Ls=120°-150° by MRO

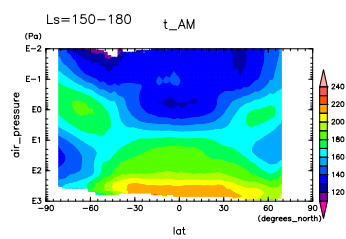
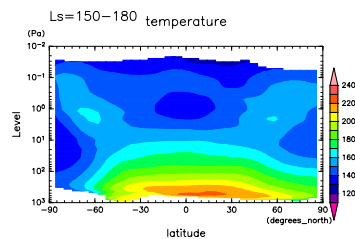


Figure 284: Temp at 03 LST and Ls=150°-180° by DCPAM

Figure 287: Temp at 03 LST and Ls=150°-180° by MRO

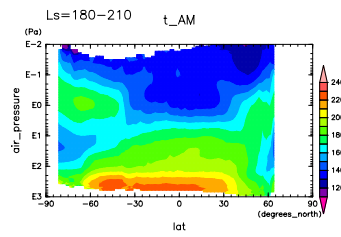
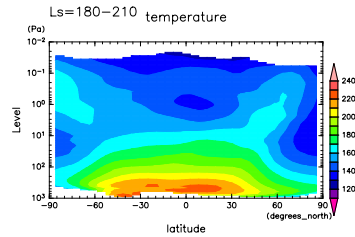


Figure 288: Temp at 03 LST and Ls=180°-210° by DCPAM

Figure 291: Temp at 03 LST and Ls=180°-210° by MRO

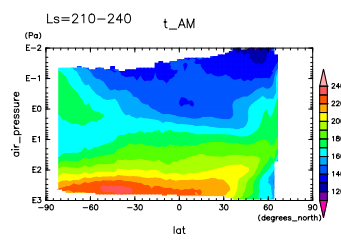
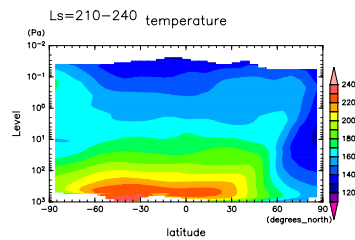


Figure 289: Temp at 03 LST and Ls=210°-240° by DCPAM

Figure 292: Temp at 03 LST and Ls=210°-240° by MRO

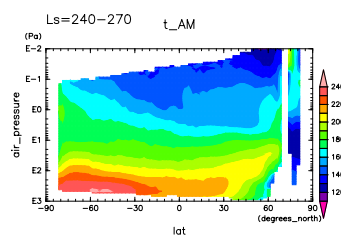
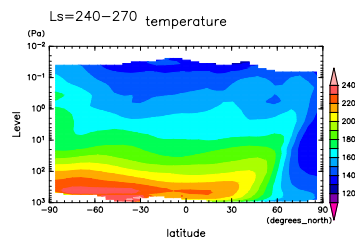


Figure 290: Temp at 03 LST and Ls=240°-270° by DCPAM

Figure 293: Temp at 03 LST and Ls=240°-270° by MRO

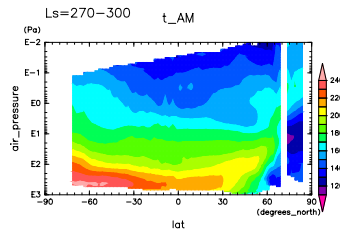
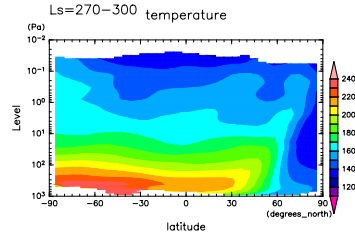


Figure 294: Temp at 03 LST and Ls=270°-300° by DCPAM

Figure 297: Temp at 03 LST and Ls=270°-300° by MRO

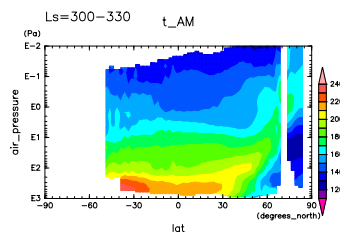
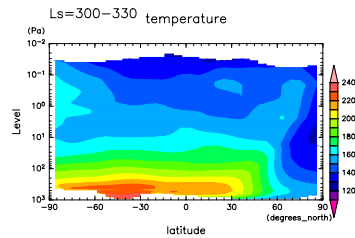


Figure 295: Temp at 03 LST and Ls=300°-330° by DCPAM

Figure 298: Temp at 03 LST and Ls=300°-330° by MRO

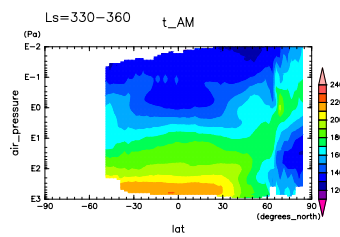
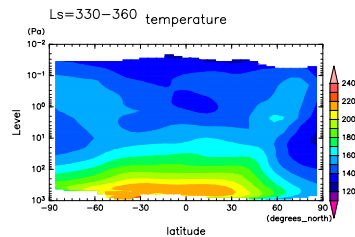


Figure 296: Temp at 03 LST and Ls=330°-360° by DCPAM

Figure 299: Temp at 03 LST and Ls=330°-360° by MRO

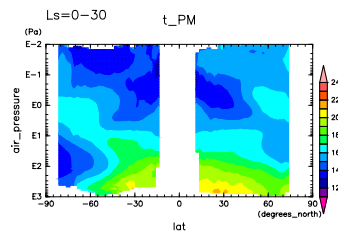
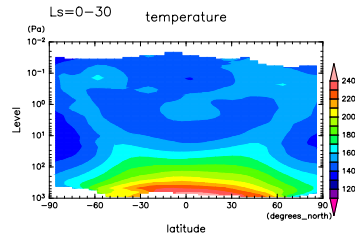


Figure 300: Temp at 15 LST and Ls=0°-30° by DCPAM

Figure 303: Temp at 15 LST and Ls=0°-30° by MRO

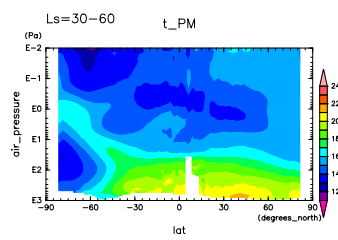
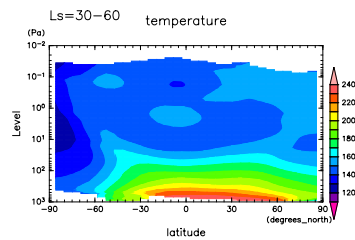


Figure 301: Temp at 15 LST and Ls=30°-60° by DCPAM

Figure 304: Temp at 15 LST and Ls=30°-60° by MRO

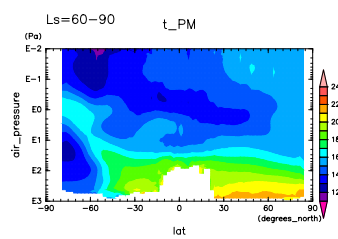
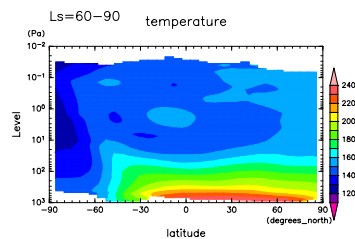


Figure 302: Temp at 15 LST and Ls=60°-90° by DCPAM

Figure 305: Temp at 15 LST and Ls=60°-90° by MRO

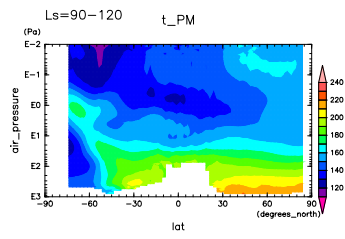
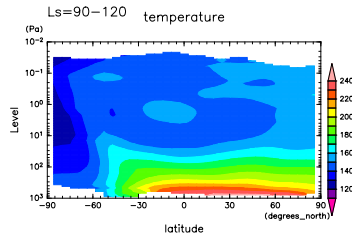


Figure 306: Temp at 15 LST and Ls=90°-120° by DCPAM

Figure 309: Temp at 15 LST and Ls=90°-120° by MRO

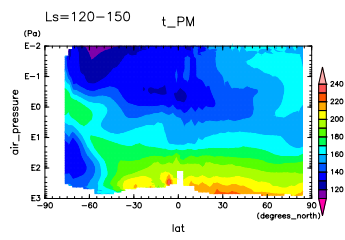
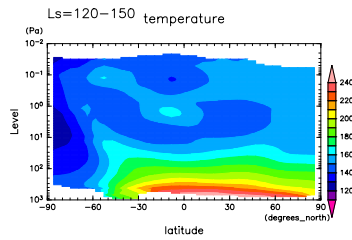


Figure 307: Temp at 15 LST and Ls=120°-150° by DCPAM

Figure 310: Temp at 15 LST and Ls=120°-150° by MRO

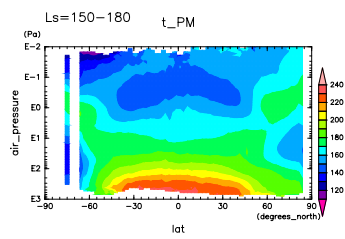
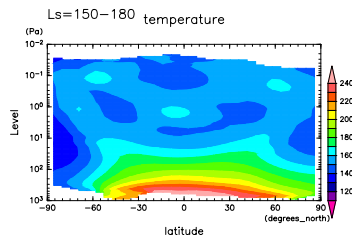


Figure 308: Temp at 15 LST and Ls=150°-180° by DCPAM

Figure 311: Temp at 15 LST and Ls=150°-180° by MRO

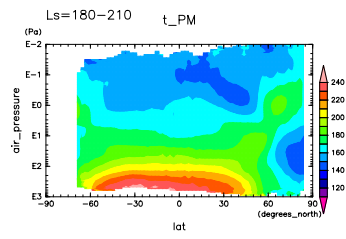
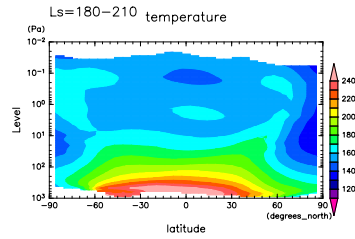


Figure 312: Temp at 15 LST and Ls=180°-210° by DCPAM

Figure 315: Temp at 15 LST and Ls=180°-210° by MRO

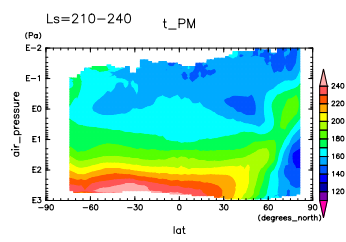
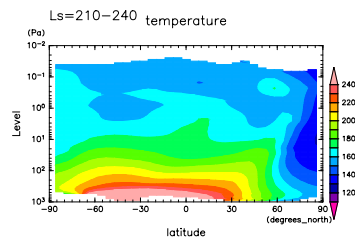


Figure 313: Temp at 15 LST and Ls=210°-240° by DCPAM

Figure 316: Temp at 15 LST and Ls=210°-240° by MRO

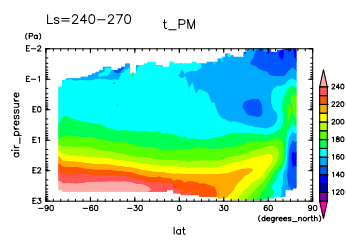
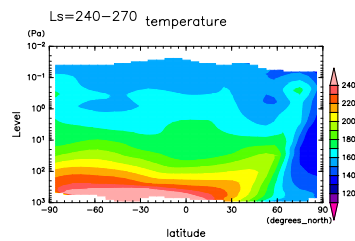


Figure 314: Temp at 15 LST and Ls=240°-270° by DCPAM

Figure 317: Temp at 15 LST and Ls=240°-270° by MRO

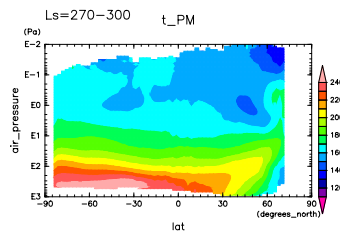
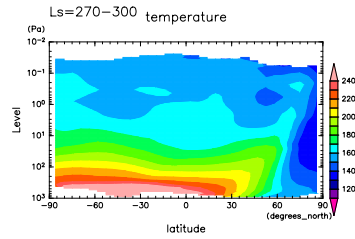


Figure 318: Temp at 15 LST and Ls=270°-300° by DCPAM

Figure 321: Temp at 15 LST and Ls=270°-300° by MRO

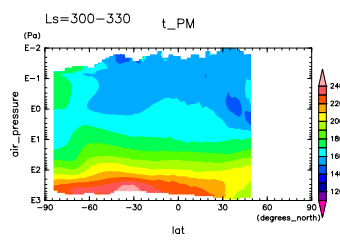
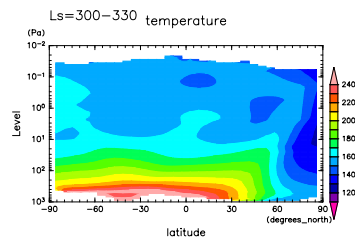


Figure 319: Temp at 15 LST and Ls=300°-330° by DCPAM

Figure 322: Temp at 15 LST and Ls=300°-330° by MRO

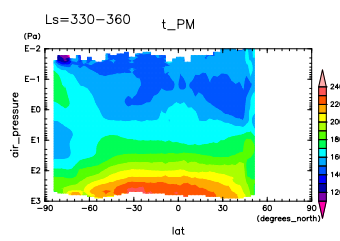
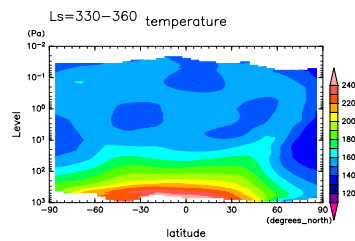


Figure 320: Temp at 15 LST and Ls=330°-360° by DCPAM

Figure 323: Temp at 15 LST and Ls=330°-360° by MRO



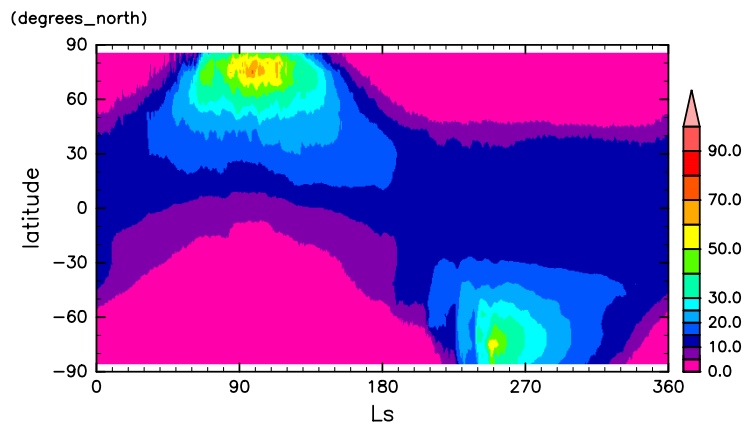


Figure 324: Column integrated water vapor by DCPAM

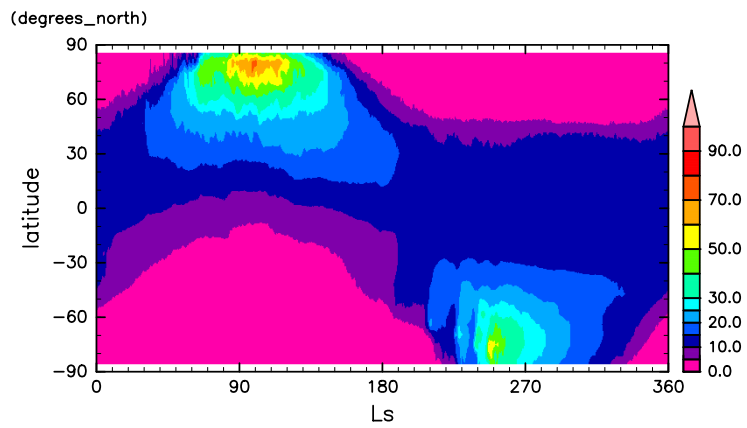


Figure 325: Column integrated water vapor by DCPAM

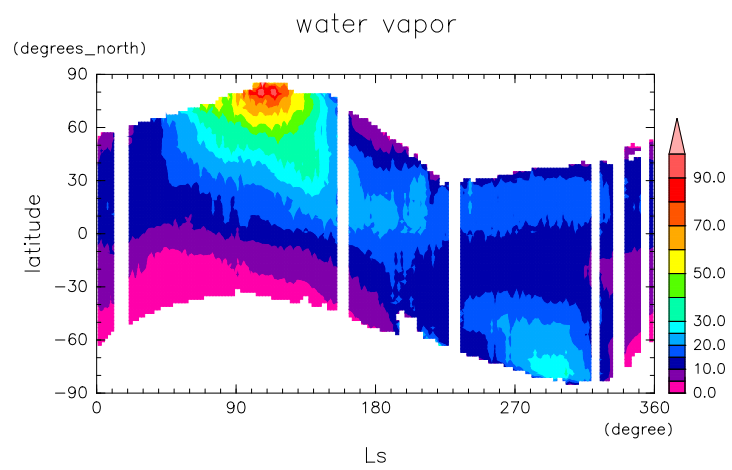


Figure 326: Column integrated water vapor observed by MGS-TES in MY25

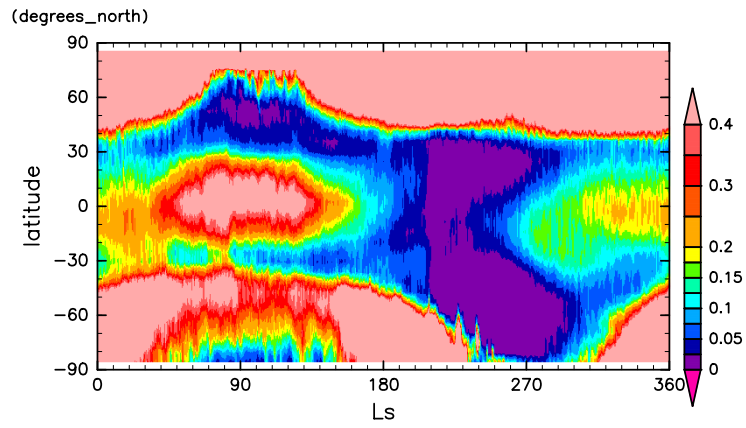


Figure 327: Optical depth of water ice by DCPAM

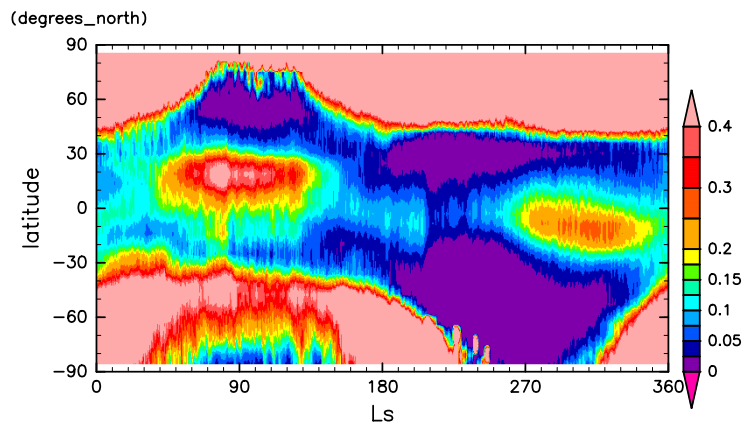


Figure 328: Optical depth of water ice by DCPAM

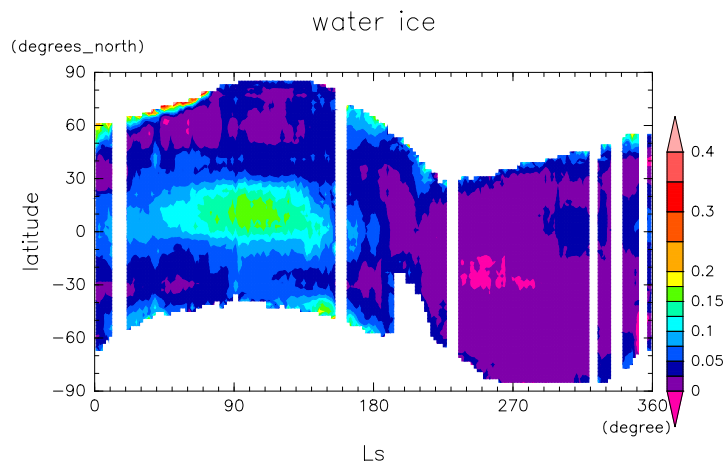


Figure 329: Optical depth of water ice observed by MGS-TES in MY25

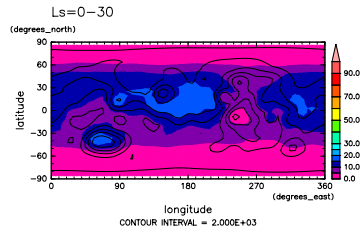


Figure 330: Prec. water at 02 LST and  $L_s=0^\circ-30^\circ$  by DCPAM

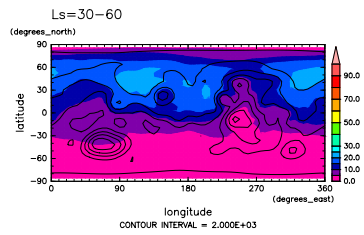


Figure 331: Prec. water at 02 LST and  $L_s=30^\circ-60^\circ$  by DCPAM

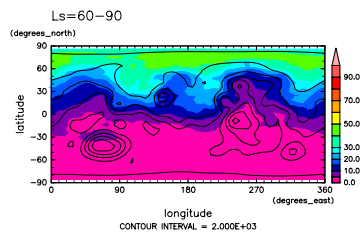


Figure 332: Prec. water at 02 LST and  $L_s=60^\circ-90^\circ$  by DCPAM

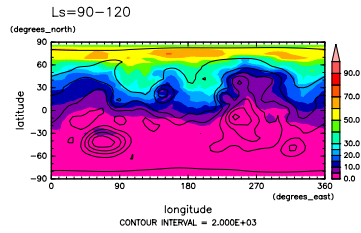


Figure 333: Prec. water at 02 LST and Ls=90°-120° by DCPAM

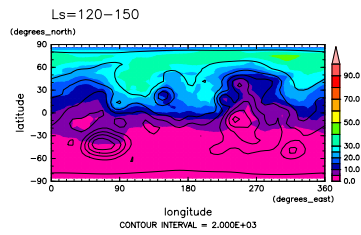


Figure 334: Prec. water at 02 LST and Ls=120°-150° by DCPAM

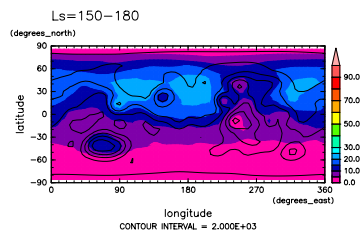


Figure 335: Prec. water at 02 LST and Ls=150°-180° by DCPAM

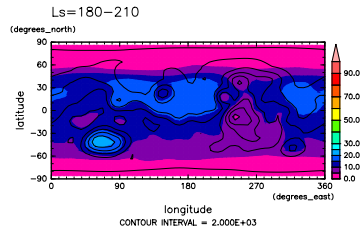


Figure 336: Prec. water at 02 LST and Ls=180°-210° by DCPAM

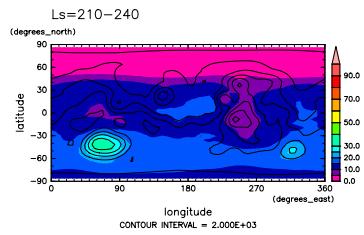


Figure 337: Prec. water at 02 LST and Ls=210°-240° by DCPAM

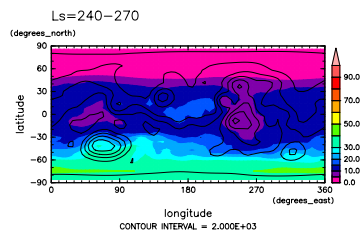


Figure 338: Prec. water at 02 LST and Ls=240°-270° by DCPAM

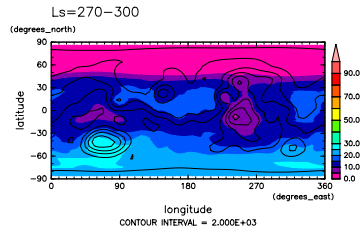


Figure 339: Prec. water at 02 LST and Ls=270°-300° by DCPAM

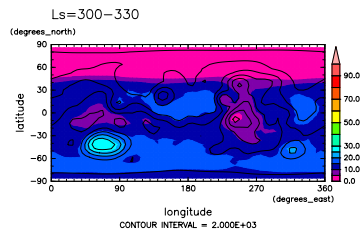


Figure 340: Prec. water at 02 LST and Ls=300°-330° by DCPAM

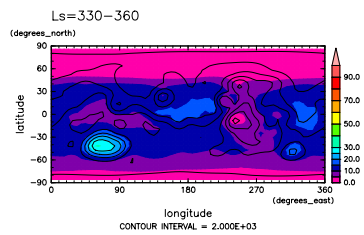


Figure 341: Prec. water at 02 LST and Ls=330°-360° by DCPAM



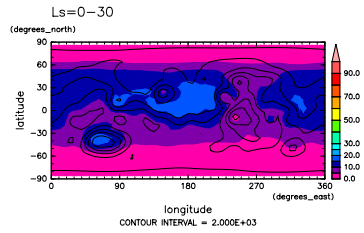


Figure 342: Prec. water at 14 LST and  $L_s=0^\circ-30^\circ$  by DCPAM

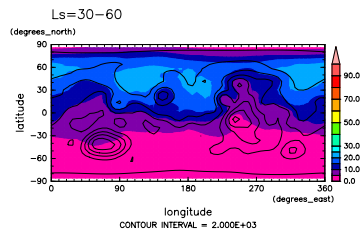


Figure 343: Prec. water at 14 LST and  $L_s=30^\circ-60^\circ$  by DCPAM

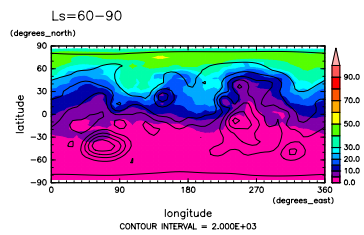


Figure 344: Prec. water at 14 LST and  $L_s=60^\circ-90^\circ$  by DCPAM

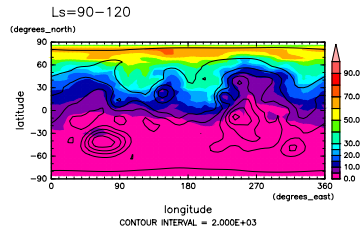


Figure 345: Prec. water at 14 LST and Ls=90°-120° by DCPAM

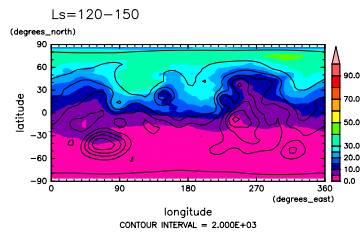


Figure 346: Prec. water at 14 LST and Ls=120°-150° by DCPAM

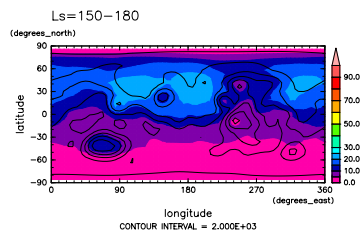


Figure 347: Prec. water at 14 LST and Ls=150°-180° by DCPAM

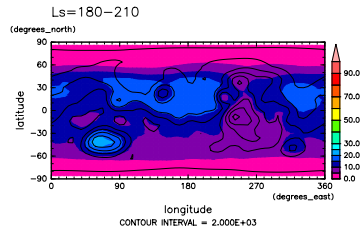


Figure 348: Prec. water at 14 LST and Ls=180°-210° by DCPAM

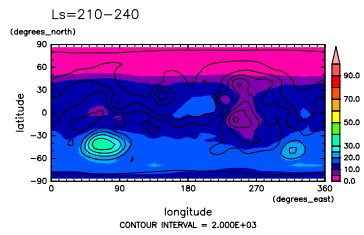


Figure 349: Prec. water at 14 LST and Ls=210°-240° by DCPAM

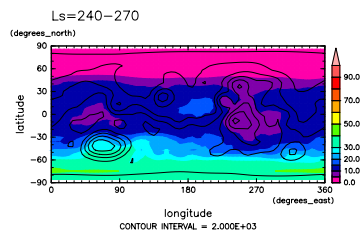


Figure 350: Prec. water at 14 LST and Ls=240°-270° by DCPAM

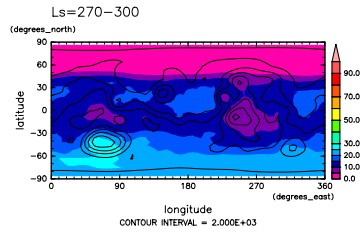


Figure 351: Prec. water at 14 LST and Ls=270°-300° by DCPAM

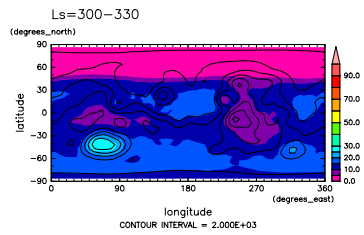


Figure 352: Prec. water at 14 LST and Ls=300°-330° by DCPAM

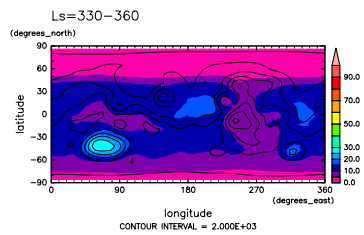


Figure 353: Prec. water at 14 LST and Ls=330°-360° by DCPAM

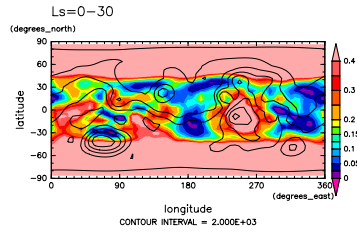


Figure 354: H<sub>2</sub>O ice cloud optical depth at 02 LST and Ls=0°-30° by DCPAM

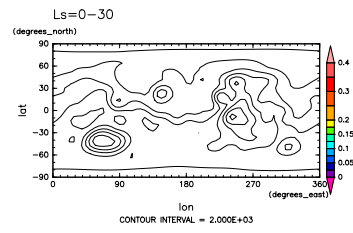


Figure 357: H<sub>2</sub>O ice cloud optical depth at 02 LST and Ls=0°-30° by MGS

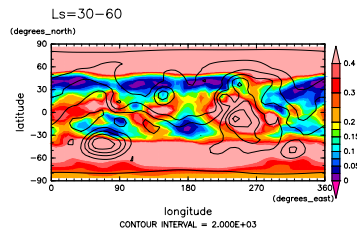


Figure 355: H<sub>2</sub>O ice cloud optical depth at 02 LST and Ls=30°-60° by DCPAM

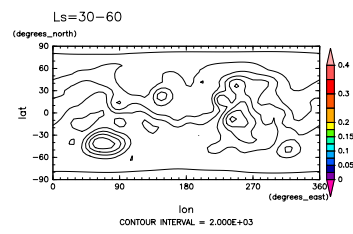


Figure 358: H<sub>2</sub>O ice cloud optical depth at 02 LST and Ls=30°-60° by MGS

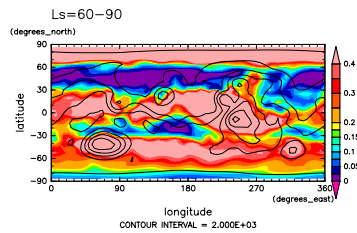


Figure 356: H<sub>2</sub>O ice cloud optical depth at 02 LST and Ls=60°-90° by DCPAM

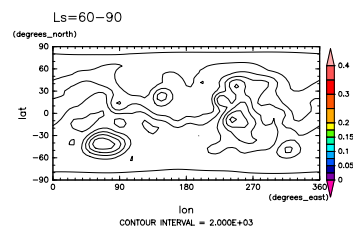


Figure 359: H<sub>2</sub>O ice cloud optical depth at 02 LST and Ls=60°-90° by MGS

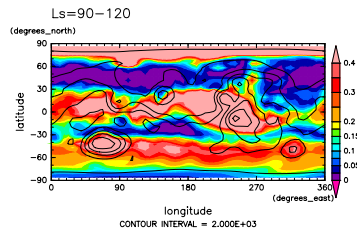


Figure 360: H<sub>2</sub>O ice cloud optical depth at 02 LST and Ls=90°-120° by DCPAM

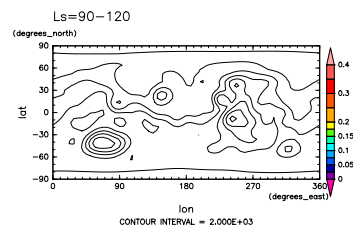


Figure 363: H<sub>2</sub>O ice cloud optical depth at 02 LST and Ls=90°-120° by MGS

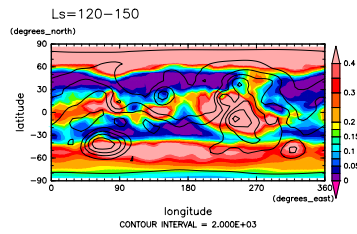


Figure 361: H<sub>2</sub>O ice cloud optical depth at 02 LST and Ls=120°-150° by DCPAM

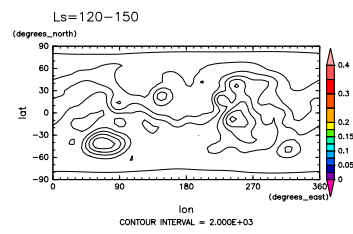


Figure 364: H<sub>2</sub>O ice cloud optical depth at 02 LST and Ls=120°-150° by MGS

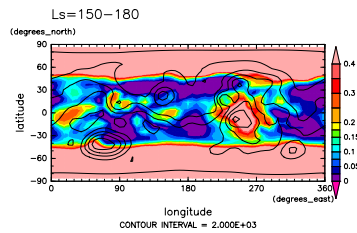


Figure 362: H<sub>2</sub>O ice cloud optical depth at 02 LST and Ls=150°-180° by DCPAM

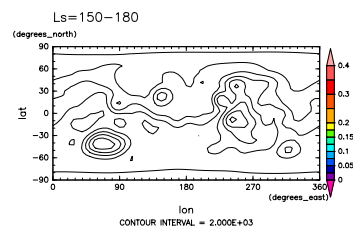


Figure 365: H<sub>2</sub>O ice cloud optical depth at 02 LST and Ls=150°-180° by MGS

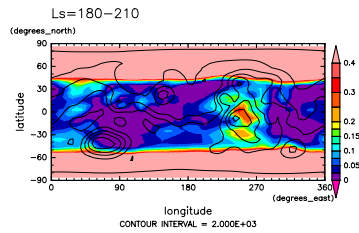


Figure 366: H<sub>2</sub>O ice cloud optical depth at 02 LST and Ls=180°-210° by DCPAM

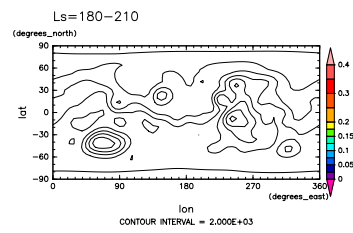


Figure 369: H<sub>2</sub>O ice cloud optical depth at 02 LST and Ls=180°-210° by MGS

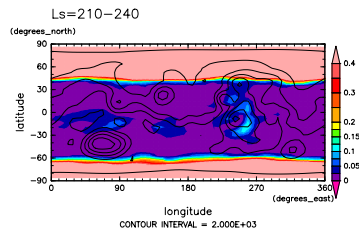


Figure 367: H<sub>2</sub>O ice cloud optical depth at 02 LST and Ls=210°-240° by DCPAM

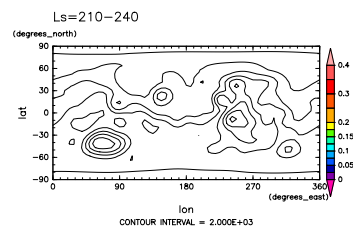


Figure 370: H<sub>2</sub>O ice cloud optical depth at 02 LST and Ls=210°-240° by MGS

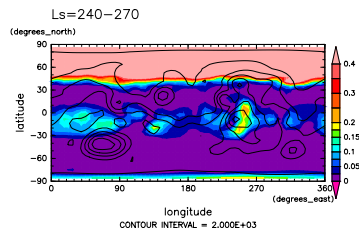


Figure 368: H<sub>2</sub>O ice cloud optical depth at 02 LST and Ls=240°-270° by DCPAM

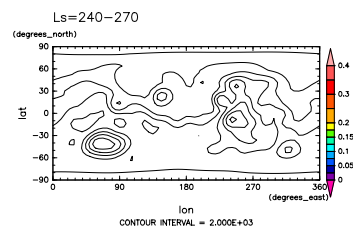


Figure 371: H<sub>2</sub>O ice cloud optical depth at 02 LST and Ls=240°-270° by MGS

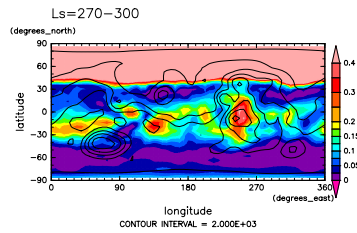


Figure 372: H<sub>2</sub>O ice cloud optical depth at 02 LST and Ls=270°-300° by DCPAM

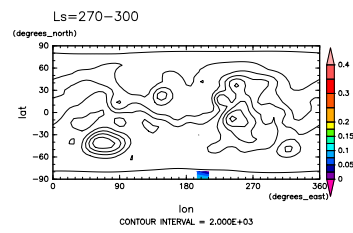


Figure 375: H<sub>2</sub>O ice cloud optical depth at 02 LST and Ls=270°-300° by MGS

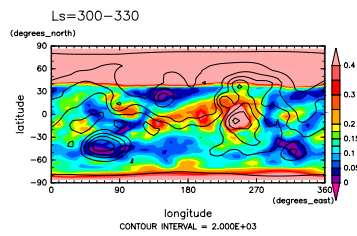


Figure 373: H<sub>2</sub>O ice cloud optical depth at 02 LST and Ls=300°-330° by DCPAM

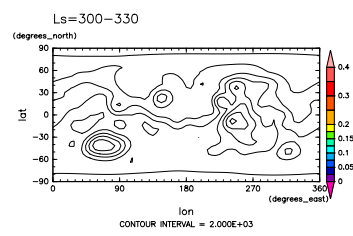


Figure 376: H<sub>2</sub>O ice cloud optical depth at 02 LST and Ls=300°-330° by MGS

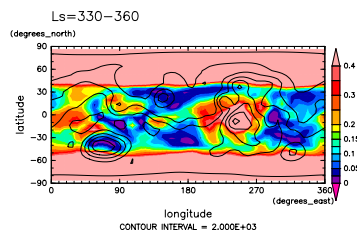


Figure 374: H<sub>2</sub>O ice cloud optical depth at 02 LST and Ls=330°-360° by DCPAM

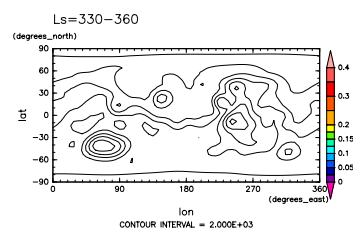


Figure 377: H<sub>2</sub>O ice cloud optical depth at 02 LST and Ls=330°-360° by MGS



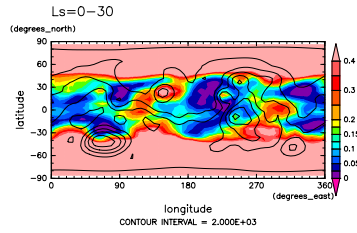


Figure 378: H<sub>2</sub>O ice cloud optical depth at 14 LST and Ls=0°-30° by DCPAM

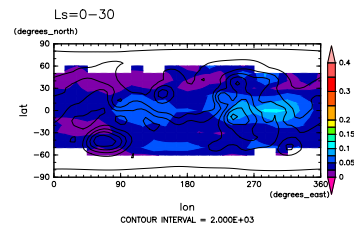


Figure 381: H<sub>2</sub>O ice cloud optical depth at 14 LST and Ls=0°-30° by MGS

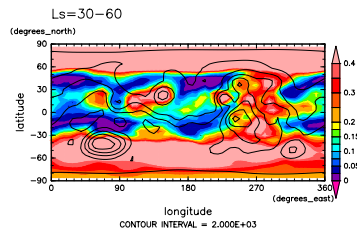


Figure 379: H<sub>2</sub>O ice cloud optical depth at 14 LST and Ls=30°-60° by DCPAM

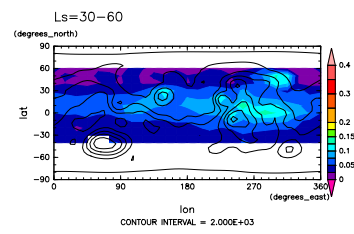


Figure 382: H<sub>2</sub>O ice cloud optical depth at 14 LST and Ls=30°-60° by MGS

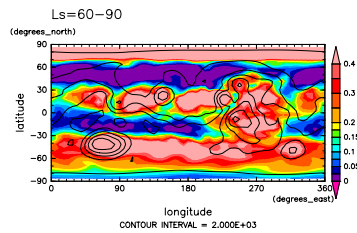


Figure 380: H<sub>2</sub>O ice cloud optical depth at 14 LST and Ls=60°-90° by DCPAM

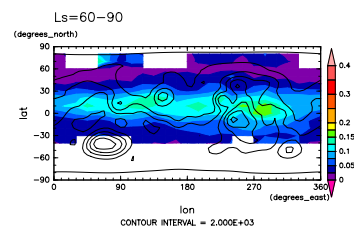


Figure 383: H<sub>2</sub>O ice cloud optical depth at 14 LST and Ls=60°-90° by MGS

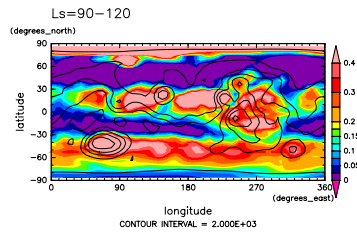


Figure 384: H<sub>2</sub>O ice cloud optical depth at 14 LST and Ls=90°-120° by DCPAM

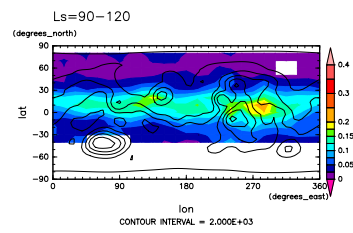


Figure 387: H<sub>2</sub>O ice cloud optical depth at 14 LST and Ls=90°-120° by MGS

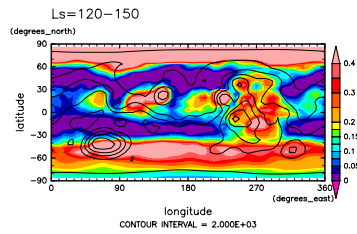


Figure 385: H<sub>2</sub>O ice cloud optical depth at 14 LST and Ls=120°-150° by DCPAM

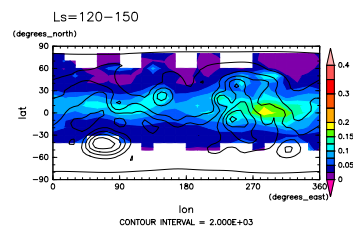


Figure 388: H<sub>2</sub>O ice cloud optical depth at 14 LST and Ls=120°-150° by MGS

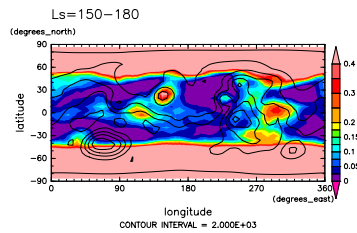


Figure 386: H<sub>2</sub>O ice cloud optical depth at 14 LST and Ls=150°-180° by DCPAM

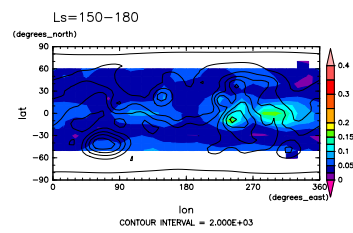


Figure 389: H<sub>2</sub>O ice cloud optical depth at 14 LST and Ls=150°-180° by MGS

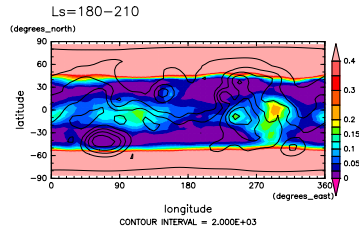


Figure 390: H<sub>2</sub>O ice cloud optical depth at 14 LST and Ls=180°-210° by DCPAM

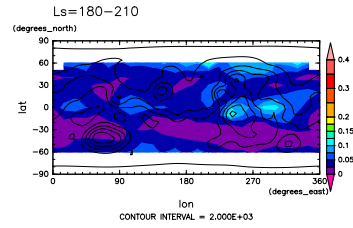


Figure 393: H<sub>2</sub>O ice cloud optical depth at 14 LST and Ls=180°-210° by MGS

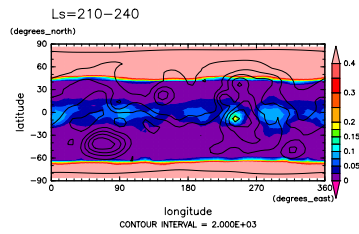


Figure 391: H<sub>2</sub>O ice cloud optical depth at 14 LST and Ls=210°-240° by DCPAM

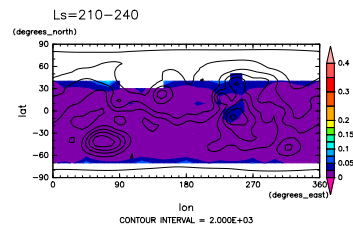


Figure 394: H<sub>2</sub>O ice cloud optical depth at 14 LST and Ls=210°-240° by MGS

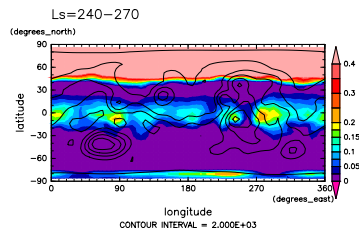


Figure 392: H<sub>2</sub>O ice cloud optical depth at 14 LST and Ls=240°-270° by DCPAM

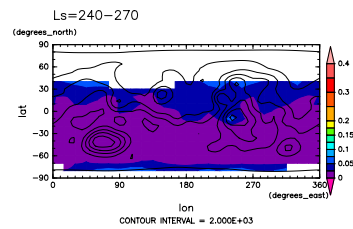


Figure 395: H<sub>2</sub>O ice cloud optical depth at 14 LST and Ls=240°-270° by MGS

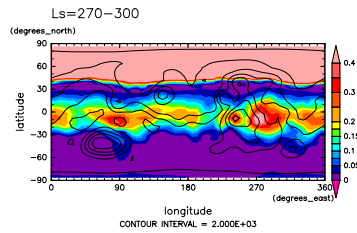


Figure 396: H<sub>2</sub>O ice cloud optical depth at 14 LST and Ls=270°-300° by DCPAM

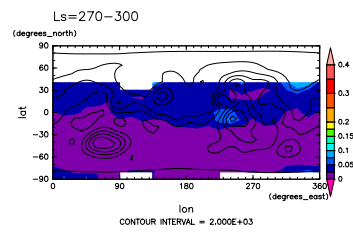


Figure 399: H<sub>2</sub>O ice cloud optical depth at 14 LST and Ls=270°-300° by MGS

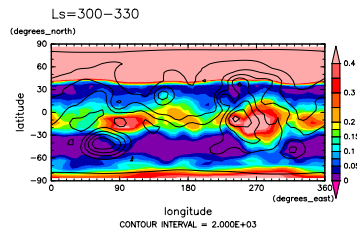


Figure 397: H<sub>2</sub>O ice cloud optical depth at 14 LST and Ls=300°-330° by DCPAM

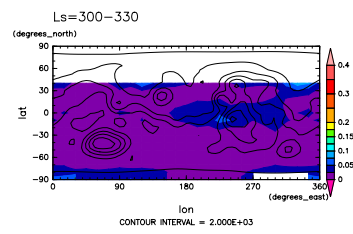


Figure 400: H<sub>2</sub>O ice cloud optical depth at 14 LST and Ls=300°-330° by MGS

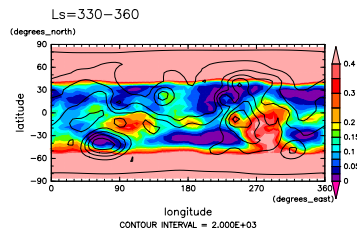


Figure 398: H<sub>2</sub>O ice cloud optical depth at 14 LST and Ls=330°-360° by DCPAM

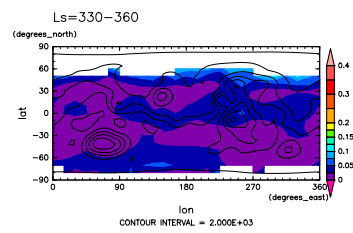


Figure 401: H<sub>2</sub>O ice cloud optical depth at 14 LST and Ls=330°-360° by MGS

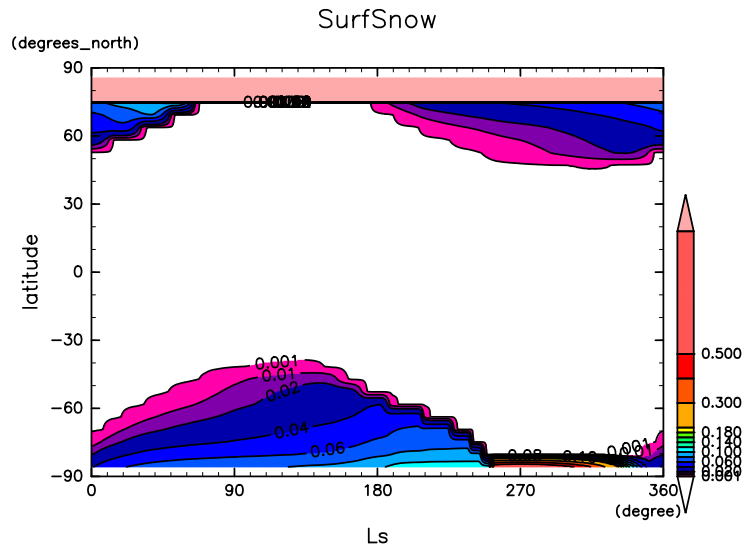


Figure 402: Snow on the ground by DCPAM

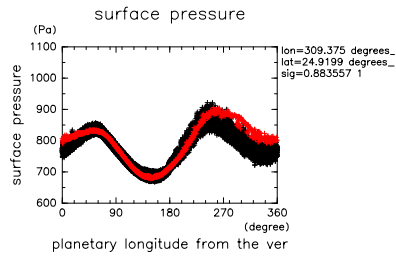


Figure 403: Surface pressure at Viking lander 1 site by DCPAM (black) and observation (diurnal mean, red)

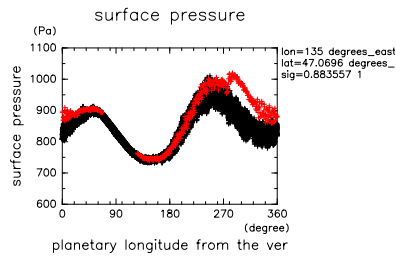


Figure 404: Surface pressure at Viking lander 2 site by DCPAM (black) and observation (diurnal mean, red)

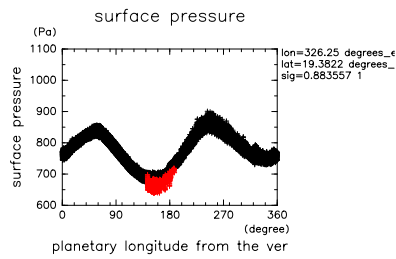


Figure 405: Surface pressure at Mars Pathfinder site by DCPAM (black) and observation (red)